

Community Wildfire Protection Plan

Upper Cherokee Park
Larimer County, Colorado

Introduction

This *Community Wildfire Protection Plan* (CWPP) was developed by landowners from Diamond Creek and Poudre River Ranch Landowners Association (PRRLA) with guidance and support from United States Forest Service, Colorado State Forest Service, Livermore Fire Protection District, Larimer County Emergency Services, and surrounding private landowners. The grouping of landowners in this plan will be referred to collectively as Upper Cherokee Park. This CWPP supplements several Larimer County documents referenced in Appendix A. Information in this plan will be provided at a level of specificity determined by the community and appropriate agencies.

I. Community / Agencies / Interested Parties Involved

Representatives involved in the development of the Upper Cherokee Park CWPP are included in the following table. Their name, organization, and roles and responsibilities are indicated below:

CWPP Development Team

Name	Organization	Roles / Responsibilities
Dave Miller, Bill Rexford, Lance Emrick, Denny Parker	Diamond Creek Road Association CWPP Working Group	Primary development of CWPP and decision making – community risk and value assessment,
Jesse Brungardt, John Reber, Bob Fetch, Shawn and Amy Scott, Paul Mason, Bob and Kathleen Meyer	Poudre River Ranches Landowners Association CWPP Working Group	development of community protection priorities, and establishment of fuels treatment project areas and methods
Gay Reynolds, Jim Herrington	Livermore Fire Protection District	Primary development of CWPP and decision making – community risk and value assessment, development of community protection action steps and establishment of fuels treatment project areas and methods
Greg Zausen Boyd Lebeda Diana Selby Mike Hughes	Colorado State Forest Service	Facilitation of planning process and approval of CWPP process and minimum standards. Provides input and expertise on forestry, fire and fuels, and FireWise concepts.
Tony Simons	Larimer County Wildfire Safety Program	Provides input and expertise on hazard assessment, defensible space, and FireWise concepts.
Dick Edwards	United States Forest Service	Provides input and expertise on federal lands forestry, fire and fuels, and FireWise concepts.
Diamond Peak Ranch, Rick Eversole, CSU Maxwell Ranch, Trail Creek, Hidden Pines	Surrounding Landowners	Provides input. This could include community risk and value assessment, development of community protection priorities, and establishment of fuels treatment project areas and methods.

II. Identification of Values at Risk

Using technology and local expertise, Upper Cherokee Park landowners have developed base maps of their respective communities and adjacent landscapes of interest. These maps will act as a visual aid from which community members can assess and make recommendations. The base maps include the following:

Areas containing critical human infrastructure—such as access roads/evacuation routes, private structures, etc.— that are at risk from wildfire (Layer One Base Map)

Areas to be modified according to CWPP Action Plan (Layer Two Base Map)

A preliminary designation of the community's Wildland Urban Interface zone. (County WUI Map)

Upper Cherokee Park Values At-Risk

The members have listed the following community values that are at-risk from wildfire, and prioritized these values as high, medium, or low. Identifying values at-risk provided this group with a basis for determining action items, as action items specifically address values at-risk. Prioritizing these values assists the community in prioritizing mitigation projects for implementation.

Table 1. Community values at risk of wildfire, prioritized on a scale of Low-Medium-High.

<u>VALUE</u>	<u>PRIORITY</u>
Life / Safety	High
Forest Health / Trees	High
Peacefulness / Tranquility	High
Access / Roads	High
Investments / Homes / Property	High
Home Heating Fuel / Propane Tanks	High
Aesthetics / Views	Med
Recreational Opportunities e.g. ATVs, hiking	Med
Water Resources e.g. wells, creeks, pond	Med
Hunting Opportunities	Med
Wildlife / Wildlife Habitat	Med

III. Community Risk Assessment

The purpose of the community risk assessment is to help to prioritize areas for treatment and identify the highest priority uses for available financial and human resources. This section is divided into five areas of concern:

Fuel Hazards – An evaluation of vegetation conditions within the community and on adjacent lands. References to be included:

- Larimer County Wildfire Safety Program – Subdivision Wildfire Hazard Review
- Larimer County Fuel Hazard Map
- Colo. State Forest Service Fuel Hazard Map

Risk of Wildfire Occurrence – An evaluation of the probability of fire ignition within the community and surrounding lands.

Reference: Fire Hazard Map from CSFS

Risk to homes and essential infrastructure – An evaluation of the vulnerability of structures within the community to ignition from firebrands, radiation, and convection. Also includes an evaluation of risks to essential infrastructure such as evacuation routes.

Will include:

- Structure Assessment (construction materials, structure access, defensible space, etc.) in accordance with FIREWISE program and recommendations from Livermore FPD / Larimer County
- Infrastructure Assessment (Community roads, fences and gates)

Risk to Other Community Values – An evaluation of risk to other community values such as wildlife habitat, recreation and scenic areas.

Local Preparedness and Firefighting Capability - Initial response to all fire, medical and associated emergencies is the responsibility of Livermore Fire Protection District. Wildland fire responsibilities of Larimer County, Colorado State Forest Service, United States Forest Service, Bureau of Land Management and the National Park Service are described in the current *Larimer County Annual Operating Plan*. All mutual aid agreements, training, equipment, and response are the responsibility of the local fire department and the agencies listed above.

IV. Hazard Reduction Priorities

Community needs regarding fuel reduction treatments within the WUI zone.

- Removal of dead/hazardous trees along access/evacuation routes
- Removal/thinning of hazardous fuels in surrounding communities and on adjacent USFS lands

Fuel reduction needs

- Remove dead/hazardous trees along community roads
- FireWise treatment in areas surrounding individual structures/driveways/high value areas
- Base Map to identify treatment types and waste disposal methods by area within Diamond Creek.

Fire response needs

- Improve access for firefighting crews including:
 - road improvements (surface, width, turnouts, dead tree removal)
 - familiarity with area (site visits, structure assessments, gate access)
- Identify properties on Fire District maps and with signage
- Provide water supply for firefighting crews (e.g. dry hydrant at pond)
- Develop staging/safety area for firefighting crews
- Develop community evacuation plan, including communication methods

V. Action Plan

Upper Cherokee Park landowners have developed and attached an action plan which identifies roles and responsibilities, funding needs and timetables listed in Hazard Reduction Priorities. The core team will meet annually to evaluate progress and mutually agree on treatment priorities.

The community members referred to their list of values at-risk to create the following action items. The action items are presented in a general list according to priority level, which allows the community to implement projects in whatever order is the most efficient and effective.

Table 2: Action items to protect values at risk of wildfire, and then prioritized on a scale of low-medium-high.

<u>ACTION ITEM</u>	<u>PRIORITY</u>
<i>ADMINISTRATIVE ACTIONS:</i>	
1) Review covenants to address compatibility with the CWPP [Who: Assoc. Board; When: 2011 Annual Mtg]	Medium
2) Institutionalize an annual review of the CWPP including: wildfire and mountain pine beetle mitigation and infrastructure improvements [Who: Assoc. Board; When: 2011 Annual Mtg and continuing]	High
<i>WUI ACTIONS:</i>	
3) Hazard reduction along external access roads: contact DP Ranch and USFS to ensure continued access on Diamond Peak Road and Forest Road 182, and removal of hazard trees on right-of-way [Who: Assoc Board; USFS has improved Road 182 and removed hazard trees]	Medium
4) Encourage fuels reduction in USFS lands surrounding Diamond Creek and PRRLA specifically in Sections 11N/73W #2, 4, 10 and 12N/73W #26, 34 [Who: Working group; Sections 4 and 10 have been partially logged]	Medium
<i>FUEL REDUCTION ACTIONS:</i>	
5) Provide information to landowners regarding benefits and methods of fuels reduction (e.g. FireWise, pine beetle info); identify sources for written information, on-line publications and presentations [Who: CWPP Group; When: 2011]	High
6) Encourage individual property assessments pertaining to wildfire issues; provide landowner appropriate contacts (e.g. CSFS site visits) [Who: CWPP Group; When: by end of 2011]	Medium
7) Investigate mountain pine beetle mitigation and fuels reduction as a community: identify organizations for assistance (e.g. BeetleBusters, gov't agencies) and/or pursue financial assistance through grants [Who: CWPP Group When: by end of 2011]	High
8) Investigate development of a community log and slash disposal site(s): Work with local Fire District to identify sites for community slash piles and develop approved methods for burning [When: winter 2010/11]	High
9) Identify sources of information for recovery / improving wildlife habitat after fuels treatment is conducted; contact State Wildlife Division [Who: CWPP Group, interested Association hunters]	Low

V. Action Plan (continued)

<u>ACTION ITEM</u>	<u>PRIORITY</u>
<i>FIRE RESPONSE / SAFETY ACTIONS:</i>	
10) Conduct site visits with emergency responders; identify access and other issues to be addressed in next action plan [Who: CWPP Group/Livermore FPD and other responders; When: Diamond Creek Done 2010, and continuing, PRRLA 2011]	Medium
11) Improve interior roads: widening, thinning trees, constructing turnouts per Fire District recommendations, improving gates. Mechanized logging by contracted logger along roads; owner workparties improving gates [In progress; review by landowners at 2011 Mtg]	High
12) Identify and develop staging/safety areas for fire crews within Diamond Creek and PRRLA properties per Fire District recommendations with owner workparties [When: Summer 2011]	Low
13) Identify property addresses clearly: get assigned addresses from County as needed; install signage along roads [Who: CWPP Group and individual owners; When: TBD]	Medium
14) Install signs at gates and/or boundaries identifying "Diamond Creek" and providing maps and emergency contact information [Who: CWPP Group and individual owners; When: TBD]	Low
15) Install Fire District locks at gates or give Fire District lock combos [Who: LFPD; When: DC Fall 2010, PRRLA 2011]	Medium
16) Research sources of water that could be used in an emergency, such as a dry hydrant or cistern, or improved access to the creeks. Indicate water supply locations on Base Map. [Who: CWPP Group; When: 2011]	Medium
17) Develop a community evacuation plan, including marking alternative evacuation routes and determining methods for emergency communication [Who, When: TBD]	Low

In cooperation with the Larimer County Fire Education Group, the Larimer Fire Council, and the Livermore Fire Protection District the Diamond Creek Road Association and PRRLA support and promote Firewise activities as outlined in the Larimer County Fire Plan. Diamond Creek and PRRLA support and educate their citizens in ways to reduce structure ignitibility through meeting Larimer County Building Code Requirements and utilizing Colorado State Forest Service FireWise Construction Fact Sheets.

The following community representatives / agencies have reviewed and support this *Community Wildfire Protection Plan*.

Diamond Creek Road Association

Poudre River Ranch Landowners Assoc.

Livermore Fire Protection District

Fort Collins District, CSFS

United States Forest Service

CWPP Development Timeline

June 2010: Diamond Creek Road Association members meet with Colorado State Forest Service personnel (Greg Zausen, Lisa Mason) to discuss development of Community Wildfire Protection Plan.

June 18, 2010: Diamond Creek annual Road Association meeting (general membership meeting); discussion of developing a Community Wildfire Protection Plan to help direct fuel/hazard mitigation projects, and to qualify the Association for possible financial assistance with these projects. Membership voted to pursue a plan, and a Working Group was identified (Dave Miller, Denny Parker, Bill Rexford, Lance Emrick).

July/August 2010: Contact with Livermore Fire Protection District (Chief Deb Payne). Worked to establish jurisdictional boundaries around Diamond Creek. Arranged for site visit by Livermore personnel. Installed Livermore Fire lock on Diamond Creek access gate.

September 2010: Site visit with Livermore Fire Sept. 2 (Jim Herrington). Fire response recommendations for Diamond Creek received and reviewed by working group; recommendations worked into the CWPP Action Plan (see attachments).

September/October 2010: Fuel/hazard mitigation work along Diamond Creek Road Association right-of-way by contracted logger (Peak-2-Peak Forestry Services)

December 2010: Plan draft submitted

January 19, 2011: Meeting with Colorado State Forest Service, USFS (Dick Edwards), Larimer County (Tony Simons), representative from Poudre River Ranch Landowners Association (Jesse Brungardt) and working group members. Plan reviewed, remaining work to complete Plan identified and assigned.

February 2011: CWPP draft revised to include Poudre River Ranch and other surrounding private ownerships.

March 2011: WUI zone defined by USFS and CSFS for the CWPP area.

May 17, 2011: Site visit with Boyd Lebeda and Jesse Brungardt to Poudre River Ranch. Fire response recommendations reviewed and incorporated into CWPP (see attachments).

May 17, 2011: Site visit with Diana Selby and Lance Emrick to Diamond Creek to discuss priorities for fuels mitigation along the road and grant requirements.

May 2011: Final Draft sent out to all interested landowners/parties for a final review

June 22, 2011: All comments incorporated and final CWPP document sent out by Greg Zausen

References

Larimer County Fire Plan a Community Wildfire Protection Plan (Larimer County 2004)
http://larimer.org/wildfire/fire_plan.pdf

Larimer County Wildfire Mitigation Plan (CSFS 1998)

Recommendations for Improving Wildfire Safety in Larimer County (CSFS 1997)

Larimer County Subdivision Wildfire Hazard Review (Larimer County/CSFS 2002)

Larimer County Annual Operating Plan (updated annually)

FEMA—Northern Colorado Natural Hazard Mitigation Plan (2004)

Appendix

Upper Cherokee Park CWPP Map and WUI zone

Diamond Creek Base Maps: a) Property Ownership; b) Treatment Projects

Poudre River Ranches Base Map

Diamond Peak Ranch Base Map

CSU Maxwell Ranch Base Map

Eversole Property Base Map

CWPP Development Timeline

Attachments

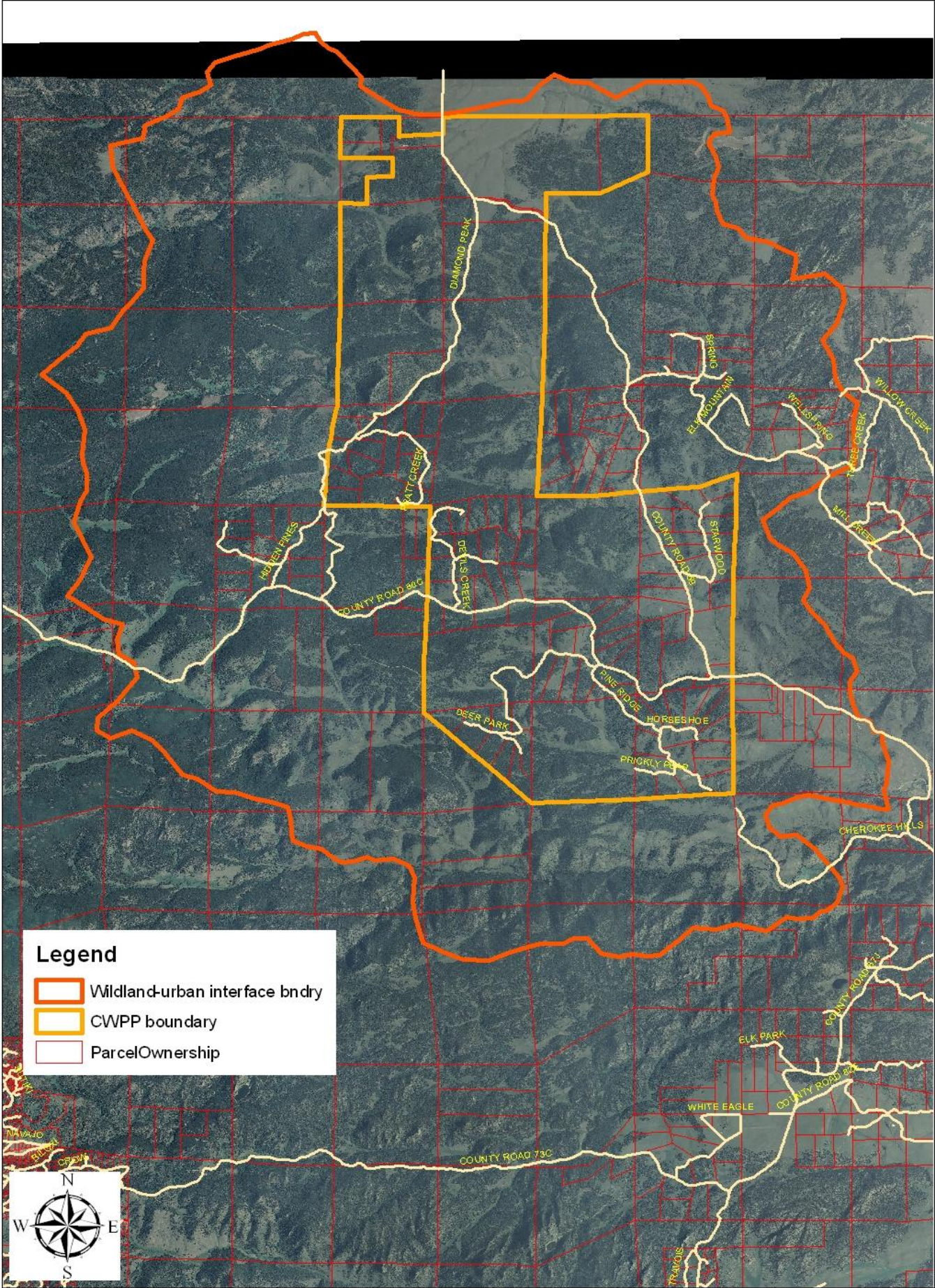
Diamond Creek CWPP
Observations and Recommendations by
Livermore Fire Protection District
September 2, 2010
Assessed by Jim Herrington

1. Install road signs at intersections. This pertains particularly when accessing Diamond Creek from the north. (The first fork in the road seems to have the same amount of use but goes to a cabin not on the road to DC)
2. Install Livermore FPD combination locks on the gates to the entrance to DC on the north and south gates. (LFPD to provide locks?)
3. Install lock boxes at the north and south gates with maps of DC and contact information, for use by firefighters on entrance. LFPD must have the combination supplied to open these boxes.
4. Identify and improve the two staging areas/safety zones. (Located at the pond near the intersection of the Diamond Peak Dr. and Pratt Creek Drive, and at the meadow at 1459 Pratt Creek. These areas should be marked and maintained such that vehicles may park safely off the road, have no hidden obstructions such as rocks or wire, have a light fuel cover (i.e., no brush, slash piles, timber.), remain unfenced or unobstructed.
5. Properties should be addressed. If there are instances where a driveway forks on the way into a structure, the direction to a structure should be marked.
6. Water sources should be marked at the point where vehicles can access them and indicated on the fire maps.
7. Evacuation routes should be established and marked so that residents can leave the area in the safest direction while maintaining less congestion for incoming fire apparatus.
8. An adequate turn around at the end of Pratt Creek Rd should be provided for apparatus.
9. Possible escape routes, as alternatives to the existing roads; should be identified and marked on fire maps (see #3).
10. Establish a "Dry Hydrant" draft site at the pond.
11. Consider establishing a dry hydrant cistern of about 4000 gallons in the vicinity of 1459 Pratt Creek Rd.
12. Improving communications from the DC should be studied. Residents should examine how they will request help from emergency responders. Cell phone "hot spots" and service providers could be identified, publicized to residents and marked on maps. Alternative methods should also be examined, including cellular antennas, community satellite phone(s) or radio communications.
13. DC should request an annual familiarization tour from LFPD so that LFPD representatives become familiar with the area and its protection features.
14. Property owners should be familiar with the proper way to mitigate their properties from fire.

Upper Cherokee Park CWPP
Observations and Recommendations by
Boyd Lebeda
Colorado State Forest Service
May 17, 2011






1. Establish a protocol for fire responders to access gates into Poudre River Ranches.
2. Identify and improve two staging areas/safety zones. I suggest that these be located at the DOW parking area just east of the Homestead, and in the area of the intersection of Devils Creek Road and CR 80C. These areas should be marked (or commonly known) and maintained such that vehicles may park safely off the road, have no hidden obstructions such as rocks or wire, have a light fuel cover (i.e., no brush, slash piles, timber, remain unfenced or unobstructed).
3. The road system is good. Road signs are present. Adequate turn arounds exist on most roads. Property addresses were less consistent. Properties should be addressed. If there are instances where a driveway forks on the way into a structure, the direction to a structure should be marked.
4. Water sources should be marked at the point where vehicles can access them and indicated on the fire maps.
5. Establish a protocol for addressing hazard trees and fallen trees in the road corridors.
6. Evacuation routes should be established and marked so that residents can leave the area in the safest direction while maintaining less congestion for incoming fire apparatus.
7. Possible escape routes, as alternatives to the existing roads; should be identified and marked on fire maps.
8. Consider identifying places that could be a helicopter landing zone. Collect GPS coordinates and provide those to fire responders.
9. Improving communications Poudre River Ranches should be studied. Residents should examine how they will request help from emergency responders. Cell phone "hot spots" and service providers could be identified, publicized to residents and marked on maps. Alternative methods should also be examined, including cellular antennas, community satellite phone(s) or radio communications.
10. Poudre River Ranches should request an annual familiarization tour from LFPD and Larimer County Emergency Services so that responders can become familiar with the area and its protection features.
11. Property owners should continue and expand defensible space and other fuel reduction projects.

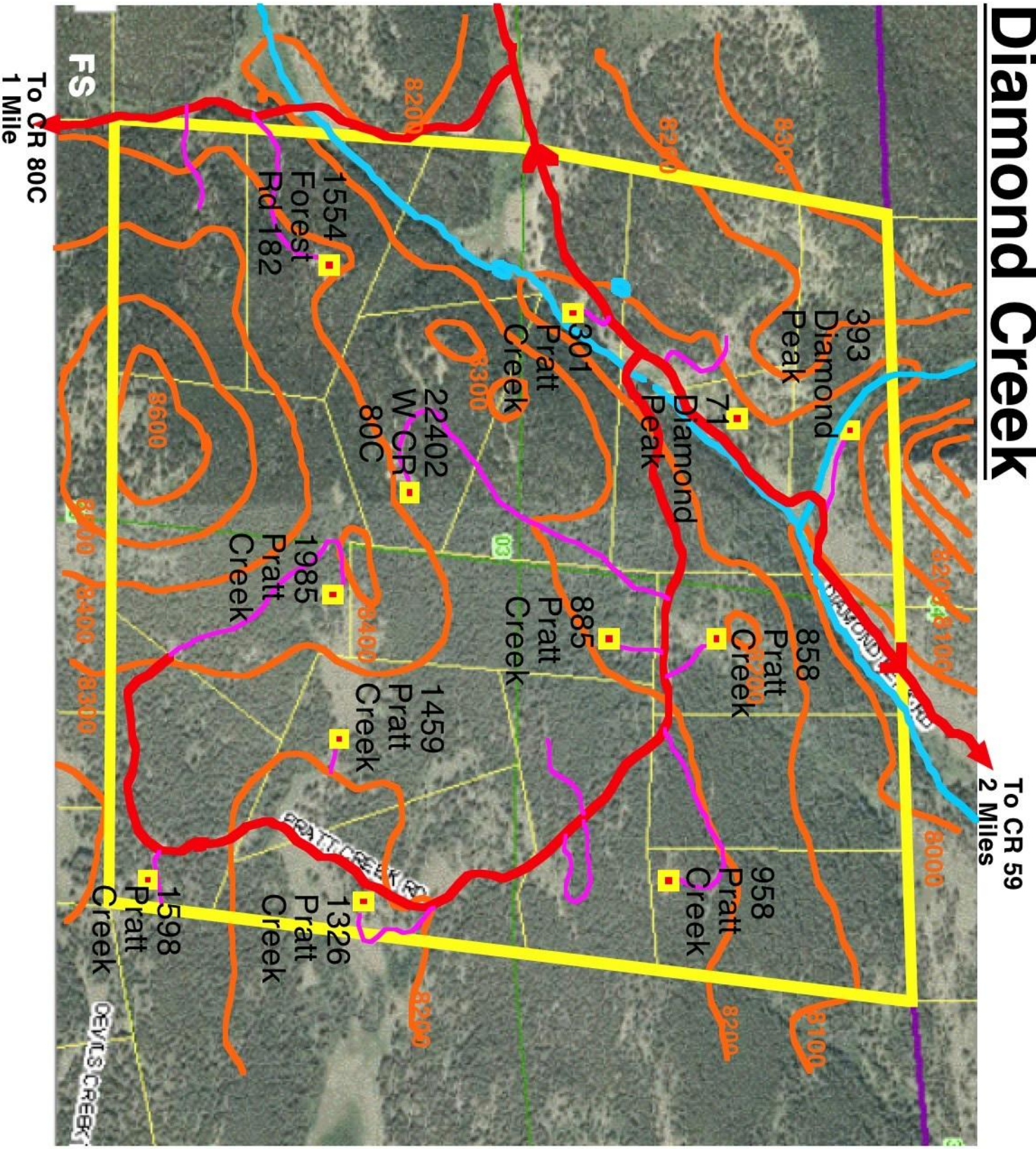
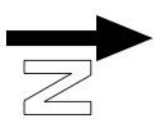
Upper Cherokee Park CWPP



Diamond Creek

Legend

- Roads 
- Driveways 
- 100' Contours 
- Creek / Pond 
- Structures 

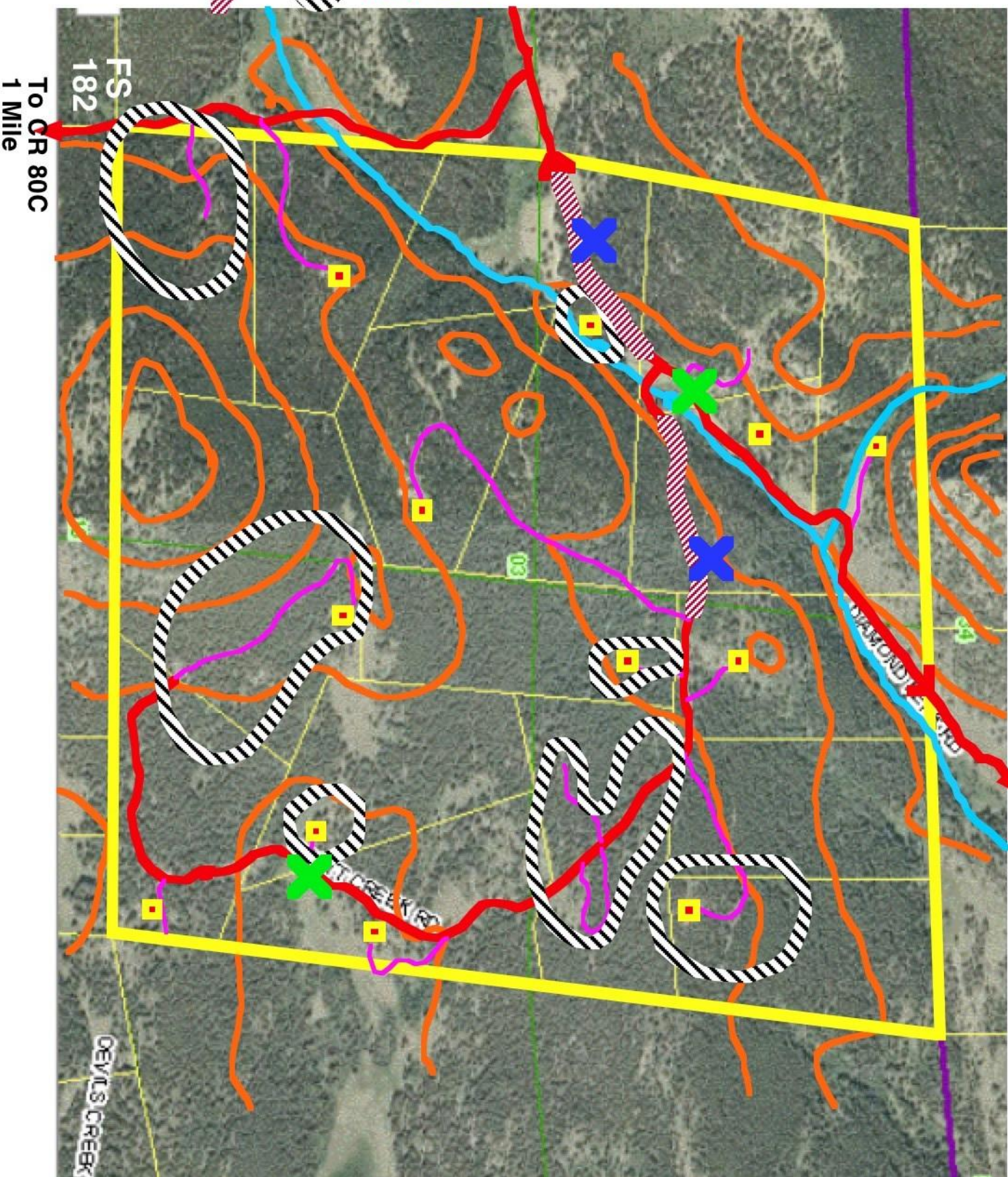
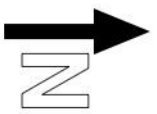


Diamond Creek - Current Projects

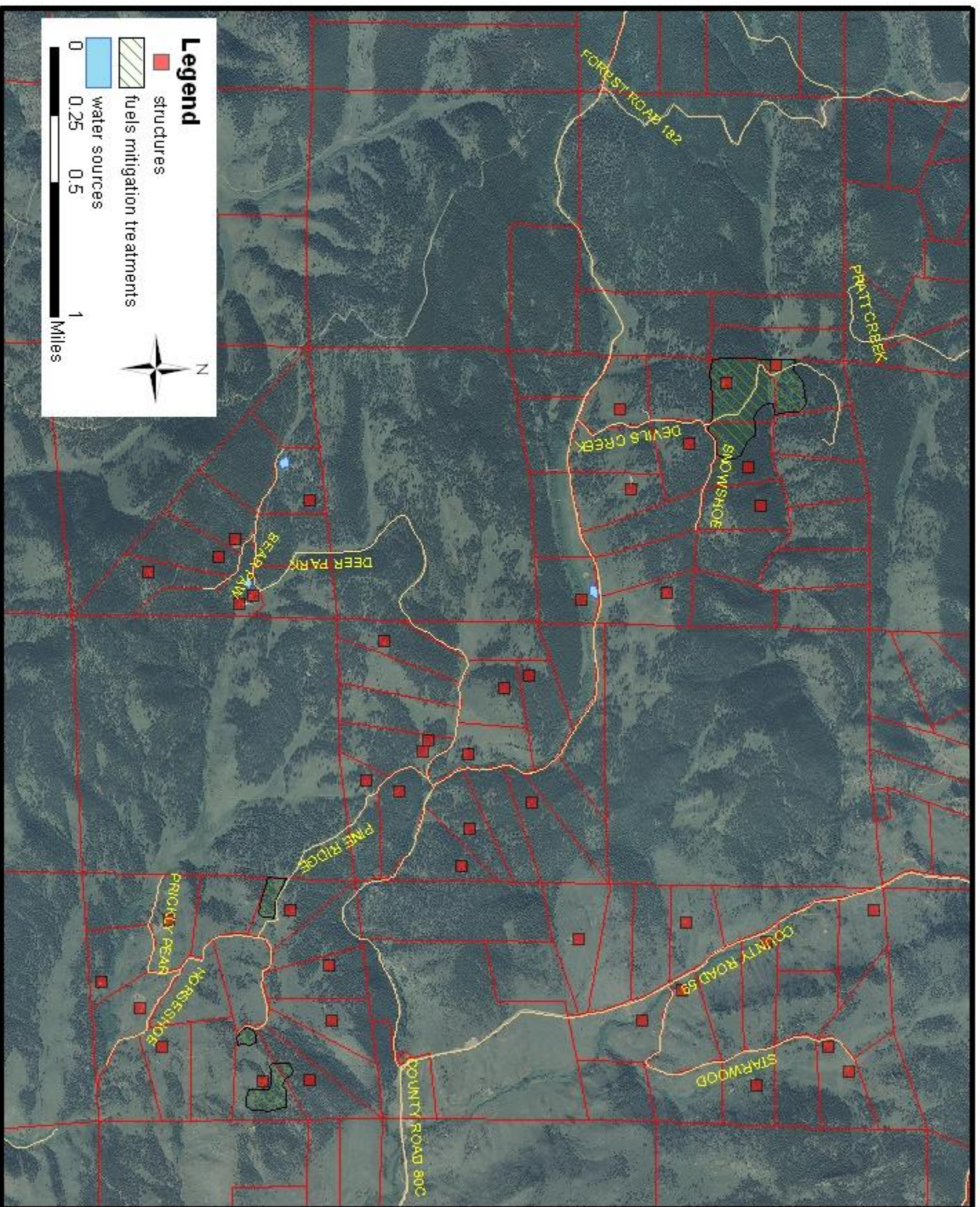
To CR 59
2 Miles

Legend

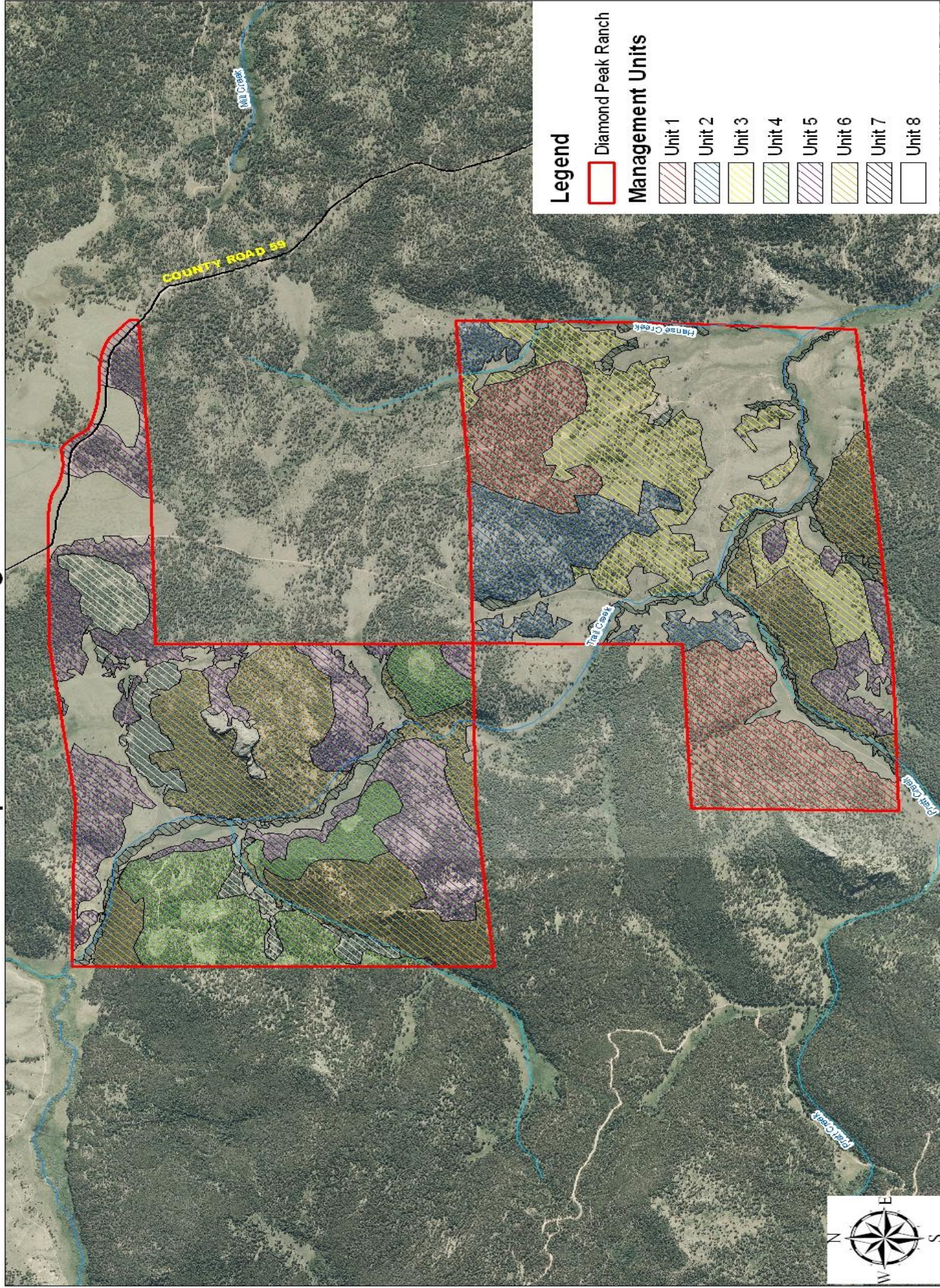
- Roads
- Driveways
- 100' Contours
- Creek / Pond
- Structures
- Community Slash
- Fire Staging/Water
- Private Fuel Treatment
- Community Fuel Treatment



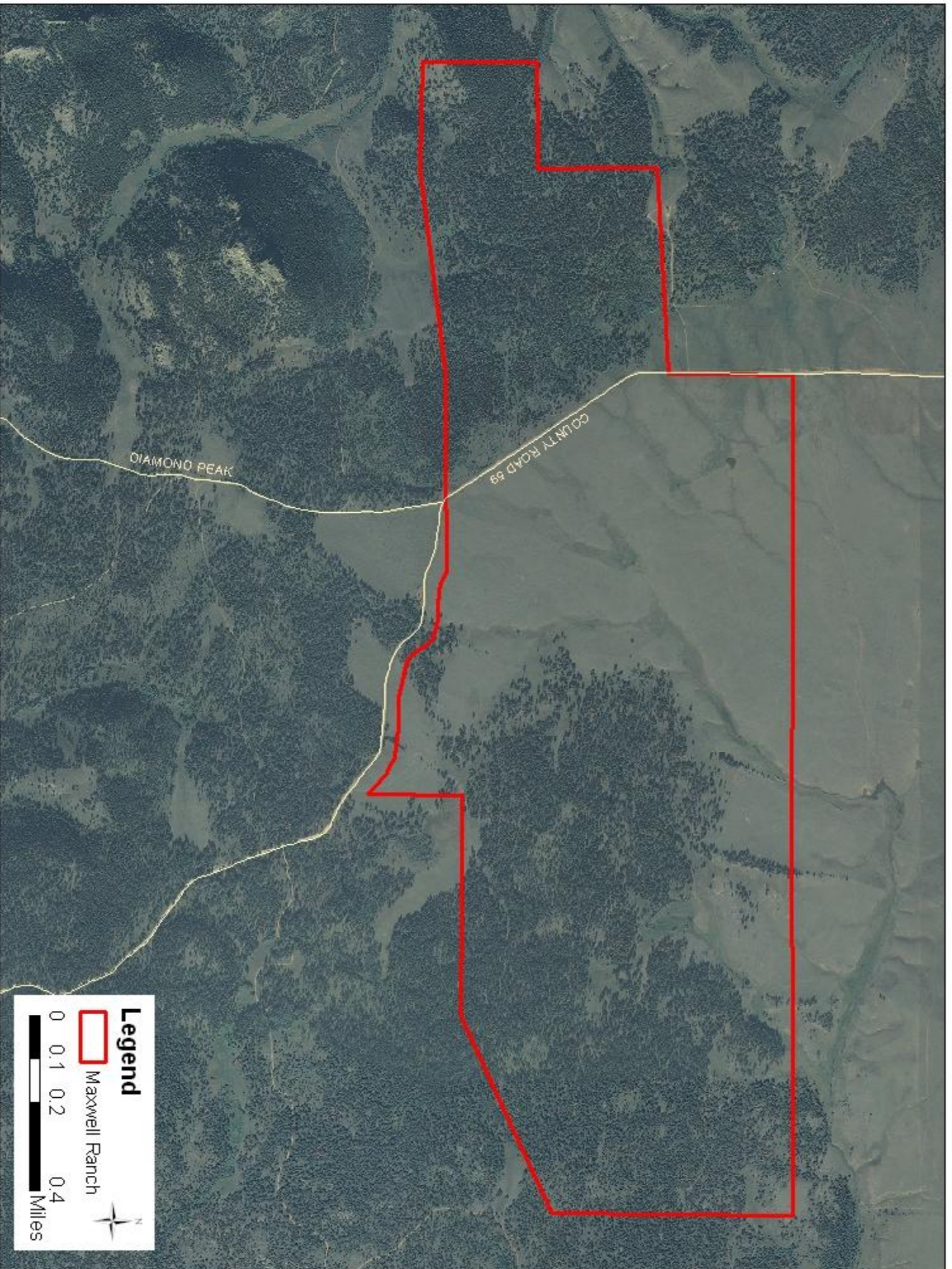
Poudre River Ranches Map



Map 6. Management Units



CSU Maxwell Ranch



Eversole Property

