

Stagecoach Area

Community Wildfire Protection Plan



Original: August 2007

**Prepared By:
Tara Mehall
Colorado State Forest Service**

**The following mutually agree with the contents of this Stagecoach Area
Community Wildfire Protection Plan (CWPP):**

/s/ Oscar P. Martinez

Oscar P. Martinez
District Ranger, Yampa Ranger District and Routt –
Medicine Bow National Forest

02/19/2008

Date

/s/ John Twitchell

John Twitchell
District Forester, Colorado State Forest Service

02/12/2008

Date

/s/ John Husband

John Husband
Field Manager, Little Snake Field Office, Bureau of Land
Management

02/26/2008

Date

/s/ Chuck Wisecup

Chuck Wisecup
Fire Chief, Oak Creek Fire Protection District

02/12/2008

Date

This plan has been reviewed by the Routt County Board of County Commissioners and found to meet the criteria for Community Wildfire Protection Plans (CWPPs) set forth by the Colorado State Forest Service.

/s/ Diane Mitsch-Bush

Diane Mitsch-Bush
Chair, Routt County Board of County Commissioners

02/12/2008

Date

/s/ Charles E. Vale

Charles "Chuck" E. Vale
Director, Routt County Office of Emergency
Management

02/12/2008

Date

TABLE OF CONTENTS

| | |
|----------------------------------------------------------------------------------|----|
| INTRODUCTION | 1 |
| OBJECTIVES OF THE STAGECOACH AREA CWPP | 2 |
| DEVELOPMENT OF THE PLAN | 3 |
| Step 1 – Decision Makers Invited | 3 |
| Step 2 – Federal Agencies Involved | 3 |
| Step 3A – State and Local Agencies Involved | 4 |
| Step 3B – Interested Parties Engaged | 5 |
| Step 3c – Core Management Group | 6 |
| Step 4 – Community Base Map Established | 7 |
| Step 5 – Community Risk Assessment | 13 |
| Fuel Hazards and Risk of Wildfire Occurrence | 13 |
| Homes and Businesses at Risk | 13 |
| Historical Values at Risk | 15 |
| Other Community Values at Risk | 16 |
| Local Preparedness and Firefighting Capability | 16 |
| Step 6 – Community Fire Hazard Reduction Priorities and Recommendations | 18 |
| Fuel Treatment Projects | 18 |
| Projects to Reduce Structural Ignitability | 19 |
| Emergency Preparedness | 20 |
| Step 7 – Action Plan and Assessment Strategy | 25 |
| Step 8 – Finalizing the Community Wildfire Protection Plan | 26 |

APPENDICES

Map – Stagecoach CWPP – Federal and State projects completed and being planned – 2008

Map – Mountain Pine Beetle – Northern Colorado Infestation in Lodgepole Pine 2002 – 2007

Map – Mountain Pine Beetle – Routt County Infestation in Lodgepole Pine 2007

Map – Routt County Fire Hazard Map

Resource Materials Used

Stagecoach Area CWPP Organizational Meeting – February 8, 2007 – Participation List

Stagecoach Area CWPP Community Base Map Established – March 13, 2007 – Participation List

Stagecoach Area CWPP Risk Assessment – April 10, 2007 – Participation List

Stagecoach Area CWPP Priorities and Recommendations – May 8, 2007 – Participation List

Stagecoach Area CWPP Draft Review – July 10, 2007 – Participation List

Stagecoach Area CWPP Draft Review – August 14, 2007 – Participation List

Stagecoach Area CWPP Annual Review – April 28, 2008 – Participation List

INTRODUCTION

Members of the Stagecoach Area community, in consultation with local, state and federal agencies and other interested parties have collaboratively developed the Stagecoach Area Community Wildfire Protection Plan (CWPP). This CWPP was created according to the guidelines of *Preparing a Community Wildfire Protection Plan, a Handbook for Wildland-Urban Interface Communities*, March 2004, Communities Committee, National Association of Counties, National Association of State Foresters, Society of American Foresters, Western Governors' Association. The handbook was designed to lead the community through a process that includes eight steps to completion of a Community Wildfire Protection Plan. Wildland Urban Interface (WUI) is defined as the line, area, or zone where structures and other human development meet or intermingle with undeveloped wildland or vegetative fuels. Several public meetings were held to guide the community through the eight steps. Technical assistance was provided by U.S. Forest Service Geographic Information Systems (GIS) Department. The *Routt County, Colorado Fire Management Plan* was completed in 2003. The Stagecoach CWPP supplements and enhances the information presented in these county documents. All resource materials used are listed in the Appendix.

The Healthy Forest Restoration Act (HFRA) passed by congress on November 21, 2003 directs the federal agencies to collaborate with communities in developing hazardous fuel reduction projects, and in the prioritization of treatment areas as defined by a community's CWPP. It identifies strategies for reducing wildfire fuels while improving forest health, supporting local industry and economy, and improving fire fighting response capabilities.

The August 17, 2001 Federal Register (Volume 66, No. 160) lists "Communities in the vicinity of Federal lands at risk from wildfire". Stagecoach, Colorado is included in this list on page 43393. The Routt County, Colorado Fire Management Plan also identifies critical wildland urban interface (WUI) areas within the Morrison Creek watershed. This Community Wildfire Protection Plan ties to both in helping to identify a plan of action to reduce the risk to the community from wildland fire. The Federal Register can be found at the following website:
http://frwebgate.access.gpo.gov/cgi-bin/getdoc.cgi?dbname=2001_register&docid=01-20592-filed

Lettered items in this plan appearing where lettered lists occur, (objectives, strategies, risks, etc.); imply no particular order of priority unless otherwise stated.

OBJECTIVES OF THE STAGECOACH AREA CWPP

- Engage in comprehensive forest planning and prioritization.
- Provide mechanism for federal agencies to give meaningful consideration to community priorities.
- Facilitate open community discussion regarding management options.
- Provide maximum flexibility for communities to determine the substance and detail of their plans.
- Merge the goals and objectives of the landowners with the needs and expectations of the community regarding fire risk reduction.
- Coordinate fire protection strategies across property boundaries.
- Coordinate the grant funding and federal program budgets to achieve the most effective results with limited funding.
- Responder safety and community awareness on fire danger.

DEVELOPMENT OF THE PLAN

The Community Wildfire Protection Plans Guidelines for Implementation August, 2005 was provided by Colorado State Forest Service (CSFS), specifically outlines eight steps community members should take to complete a viable Community Wildfire Protection Plan. The Stagecoach community elected to utilize this eight step approach to guide their Community Wildfire Protection Plan process. By following this facilitated approach, the community and agency partners engaged in focused discussion related to all critical Community Wildfire Protection Plan topics and succeeded in developing a plan that genuinely reflects the concerns and recommendations of the Oak Creek Fire Protection District. The entire collaboration began in the winter of 2007 when the Oak Creek Fire Chief and Board engaged the Colorado State Forest Service and U.S. Forest Service involvement to address all the Homeowners Association annual meetings in Stagecoach. The intent of these meetings was to involve and encourage the Homeowners Associations in the Community Wildfire Protection Plan process. The eight steps to completion are outlined in the following sections.

STEP 1 – DECISION MAKERS INVITED

The decision makers invited for this CWPP are listed below. These officials were notified on January 12, 2007 and invited to participate in the development of this plan.

- Local Government: Routt County, Colorado Board of County Commissioners through the Routt County Emergency Manager – Chuck Vale
- Oak Creek Fire Rescue Chief – Chuck Wisecup
- Colorado State Forest Service District Forester – John Twitchell
- Facilitator – Chris Zuschlag

STEP 2 – FEDERAL AGENCIES INVOLVED

The representatives of the federal agencies managing land in the vicinity of the Morrison Creek watershed Wildland Urban Interface are listed below. Most of these people attended a widely advertised initial community meeting inclusive of all interested landowners, businesses, and agency people in Routt County, Colorado. This meeting was held the evening of Tuesday, February 6, 2007 at Stagecoach Station I. The purpose of the meeting was to provide an overview of the CWPP process and to encourage residents of Routt County, Colorado to work with key agency representatives to initiate completion of their individual Community Wildfire Protection Plans. Federal agency representatives initially invited and subsequently involved include the following people:

| AGENCY | REPRESENTATIVE |
|---------------------------|-----------------------------------------------------|
| U.S. Forest Service | Mark Cahur – Central Zone Fire Management Officer |
| U.S. Forest Service | Oscar Martinez – Yampa District Ranger |
| U.S. Forest Service | Sam Duerksen – Zone Operations |
| U.S. Forest Service | Diann Ritschard – Public Affairs Officer |
| Bureau of Land Management | Lynn Barclay – Fire Mitigation Education Specialist |

STEP 3A – STATE AND LOCAL AGENCIES INVOLVED

The representatives of the state/local agencies that have jurisdictional responsibilities in the vicinity of the Morrison Creek watershed Wildland Urban Interface area are listed below. Most of these people attended the meeting described above held the evening of Tuesday, February 6, 2007 at Stagecoach Station I.

| AGENCY | REPRESENTATIVE |
|-------------------------------------------------------|-------------------------------------------|
| Colorado State Forest Service | John Twitchell – District Forester |
| Colorado State Forest Service | Tara Mehall – Forester |
| Colorado Division of Wildlife | Libbie Miller – District Wildfire Manager |
| Stagecoach State Park | Craig Preston – Park Manager |
| Routt County, Colorado Commissioner | Nancy J. Stahoviak – District 1 |
| Routt County, Colorado Commissioner | Doug B. Monger – District 2 |
| Routt County, Colorado Commissioner | Diane Mitsch Bush – District 3 |
| Routt County, Colorado Office of Emergency Management | Chuck Vale – Director |
| Oak Creek Fire Protection District | Chuck Wisecup – Fire Chief |
| Oak Creek Fire Protection District | Tony Morgan – Deputy Chief |
| Routt County, Colorado Sheriff's Office | Gary Wall – Sheriff |
| Oak Creek Fire Board | Chris Zuschlag |
| Stagecoach Property Owner's Association | Ken DePaul – Vice President |
| Stagecoach Property Owner's Association | Ken Burgess – General Manager |
| Stagecoach Property Owner's Association | Tom Erps |
| Stagecoach Property Owner's Association | Earl Halsnes |
| Morrison Creek Metropolitan Water & Sanitation | Steve Colby - Director |

STEP 3B– INTERESTED PARTIES ENGAGED

The residents from the Stagecoach community participated on the development of the Community Wildfire Protection Plan are listed below. Landowners participated in the process by attending one or more meetings, received meeting announcements, agendas, and notes, and/or communicated via telephone or e-mail.

| OAK CREEK FPD CORE TEAM MEMBERS | REPRESENTATIVE |
|--------------------------------------------|--------------------------------|
| Tony Stitch | Homeowner / Horseback |
| Steve Hayslip | Homeowner / Willow Island |
| Debbie Hunt | Homeowner |
| Danielle Domson | Homeowner |
| Dan Miller | Homeowner |
| Bill Chase | Homeowner |
| Leland Miller | Homeowner |
| C.D. Johnson | Homeowner |
| Sarah Woodmausee | Homeowner |
| Bob Woodmausee | Homeowner |
| Mike Roach | Homeowner |
| Denny Stamp | Homeowner |
| Mike Felix | Homeowner / Horseback |
| Don Alperti | Homeowner |
| Pam Williams | Homeowner |
| Tom Garite | Homeowner |
| Cathy Garite | Homeowner |
| Jim Kelly | Homeowner |
| Jean Alperti | Homeowner |
| Mary Alice Page-Allen | County Planner |
| Joe Pattillo | Homeowner / Eagleswatch |
| Ivars Mikelsons | Homeowner |
| Wendy Smith Mikelsons | Homeowner |
| Lou DeQuine | Homeowner / Flying Horse Ranch |
| Lydia DeQuine | Homeowner / Flying Horse Ranch |

STEP 3B– INTERESTED PARTIES ENGAGED (CONTINUED)

| OAK CREEK FPD CORE TEAM MEMBERS | REPRESENTATIVE |
|--------------------------------------------|-----------------------|
| Ken Collins | Homeowner |
| Don Read | Homeowner |
| Audrey Kruse | Homeowner |
| Ken Kruse | Homeowner |
| Jim Myers | Homeowner |

STEP 3C – CORE MANAGEMENT GROUP

| AGENCY | REPRESENTATIVE |
|-------------------------------------------------------|-----------------------------------------------------|
| Oak Creek Fire Protection District | Chuck Wisecup – Fire Chief |
| Facilitator | Chris Zuschlag |
| Stagecoach Property Owner’s Association | Ken Burgess – General Manager |
| U.S. Forest Service | Kent Foster – Recreation Officer |
| U.S. Forest Service | Oscar Martinez – Yampa District Ranger |
| U.S. Forest Service | Sam Duerksen – Zone Operations |
| Colorado State Forest Service | Tara Mehall – Forester |
| Bureau of Land Management | Lynn Barclay – Fire Mitigation Education Specialist |
| Colorado Division of Wildlife | Libbie Miller – District Wildfire Manager |
| Stagecoach State Park | Craig Preston – Park Manager |
| Morrison Creek Metropolitan Water Sanitation District | Steve Colby – Director |
| Routt County, Colorado Office of Emergency Management | Chuck Vale - Director |

STEP 4 – COMMUNITY BASE MAP ESTABLISHED

After considering the location of the inhabited areas, the critical human infrastructure and the risk of wildfire, the Stagecoach community identified a base map representing a Wildland Urban Interface (WUI) zone approximately 86 square miles around their community assets which include federal, state, and private lands. Generally, the Morrison Creek watershed forms a large circle including an area approximately 103 square miles bisected by CR 16. The Morrison Creek watershed was divided into three sub areas which included Lower Morrison Creek (to include CR 14 to mile marker 5 on CR 16), Middle Morrison Creek (to include CR 16 mile marker 5 to 8) and Upper Morrison Creek (to include CR 16 mile marker 8 to 19). Natural and man-made barriers used to define the Wildland Urban Interface boundary include: The Northern edge of Section 23, Township 4 North, Range 84 West, Southern edge of section 34, Township 2 North, Range 83 West, Western edge of Section 2, Township 3 North, Range 85 West and ending at the Eastern edge of Section 14, Township 2 North, Range 83 West.

Stagecoach Reservoir is a prominent topographic feature surrounded by Sarvice Creek Wilderness to the west, Green Ridge to the south, Thorpe Mountain to the east and Blacktail Mountain to the north. The base map of the Morrison Creek watershed Wildland Urban Interface and adjacent landscapes of interest as well as a detailed map is included on the following pages. The boundaries of the Morrison Creek watershed Wildland Urban Interface map include the following values at risk. Please see appendix for the following maps:

- Mountain Pine Beetle – Northern Colorado Infestation in Lodgepole Pine – 2001-2006
- Mountain Pine Beetle – Routt County Infestation in Lodgepole Pine – 2006
- County Fire Hazard Map

Inhabited areas at potential risk to wildland fire:

Lower, Middle and Upper Morrison Creek

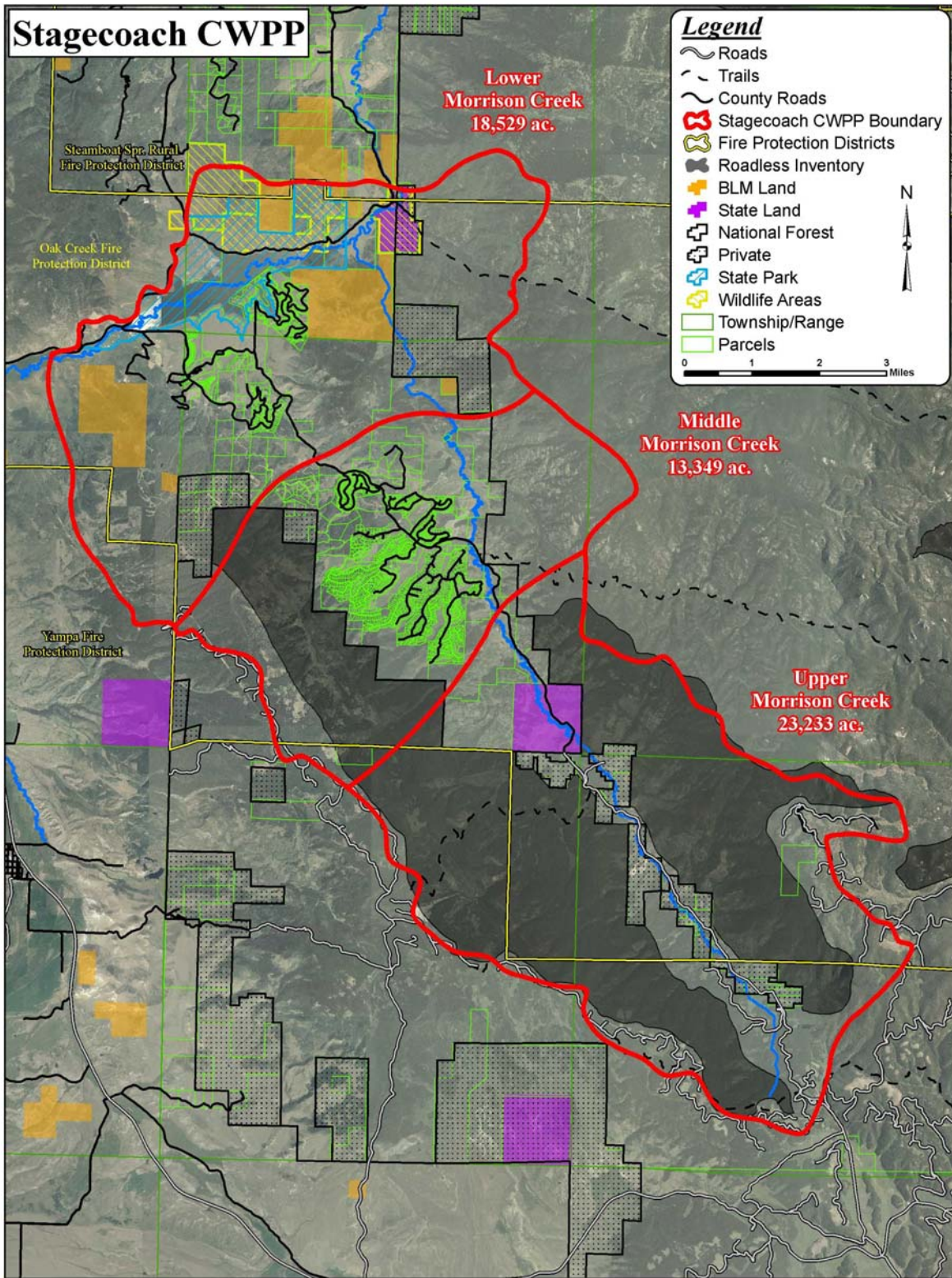
All subdivisions that border Federal & State lands are at risk.

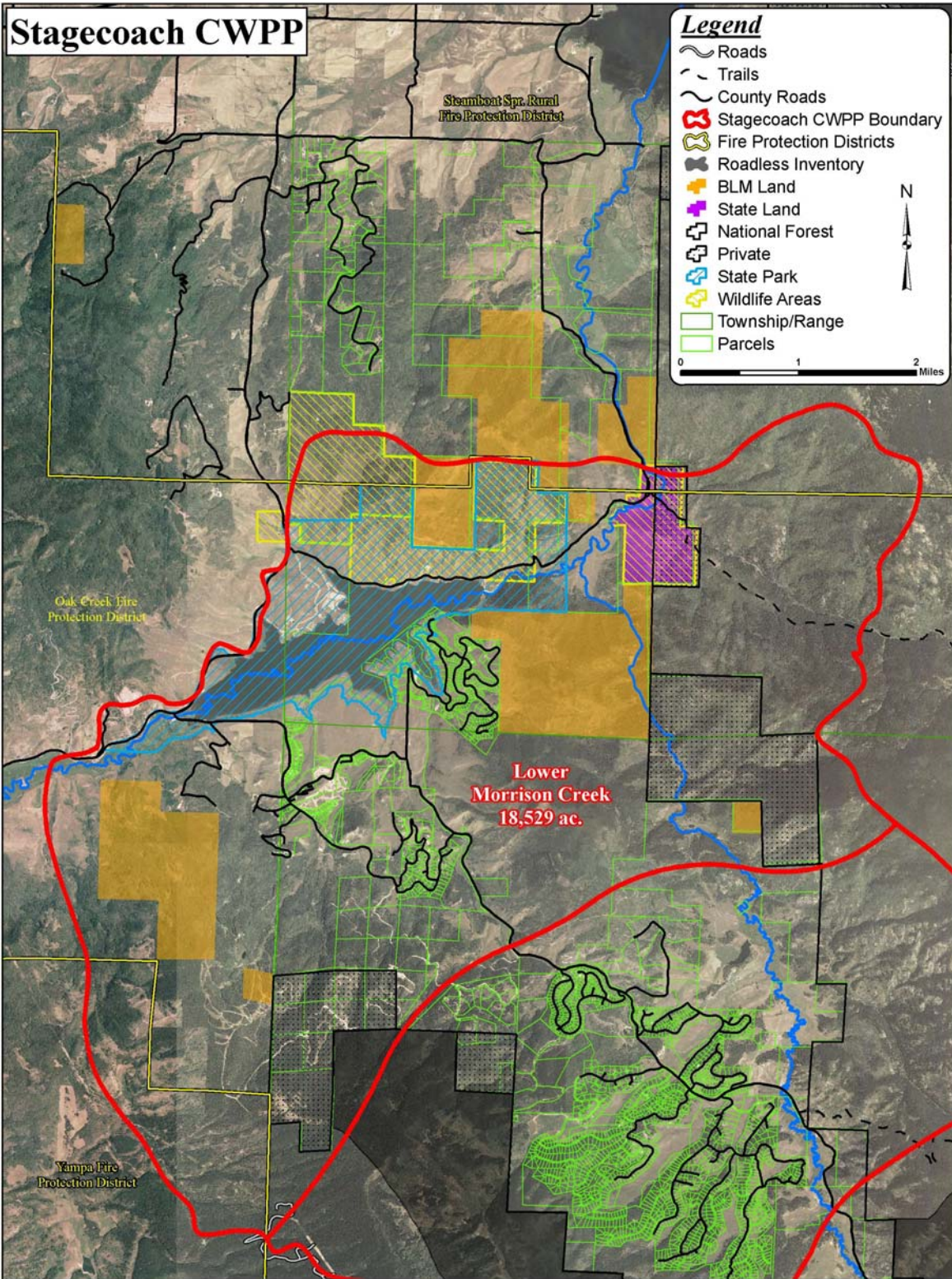
- Stagecoach State Park
- Stagecoach Ski Area
- Meadowgreen
- South Shore
- Morningside
- Horseback
- Blackhorse I
- Blackhorse II
- Sky Hitch I
- Sky Hitch II
- Sky Hitch III
- Sky Hitch IV
- South Station I
- South Station II
- Eagleswatch
- Billy Kidd Ranches
- Blue Valley Ranches

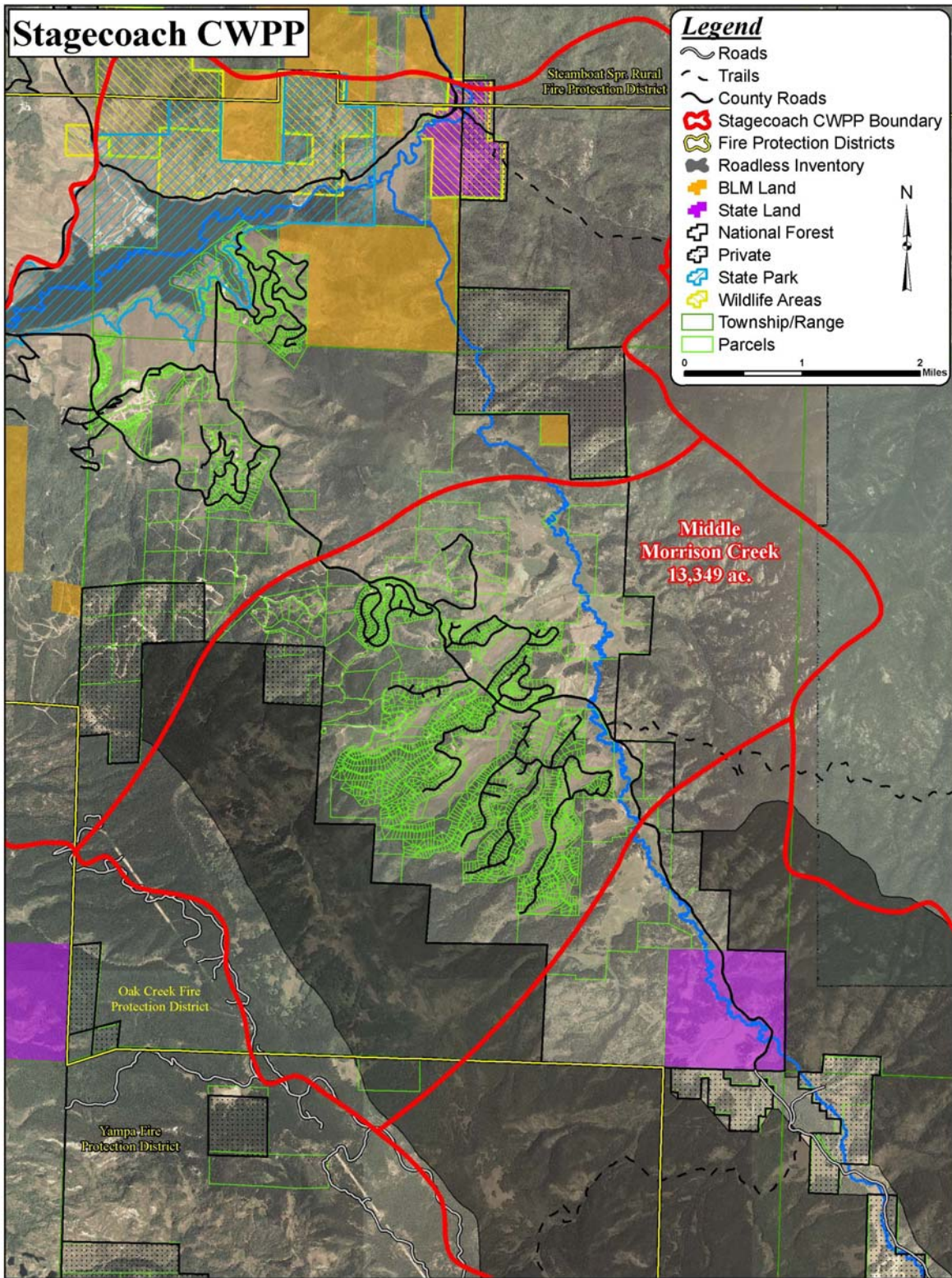
- Coyote Run
- Green Ridge Ranches
- Lynx Basin
- Red Hawk
- Ski View Estates
- Snokomo Estates
- Woodland Retreat
- Youngs Creek
- High Cross
- Overland
- High Meadows Guest Ranch
- Hideaway Ranch
- Public Lands Adjacent to Private
- Campground Facilities
- Marian at Stagecoach State Park
- Mt. Elim Bible Camp
- Morrison Divide Ranch
- Greenridge Ranch
- Lakeview Meadows
- Neighborhoods at Young's Peak
- The Meadows at Stagecoach
- Working Ranches
- Dispersed Private Properties With / Without Cabins, Homes and Other Structures

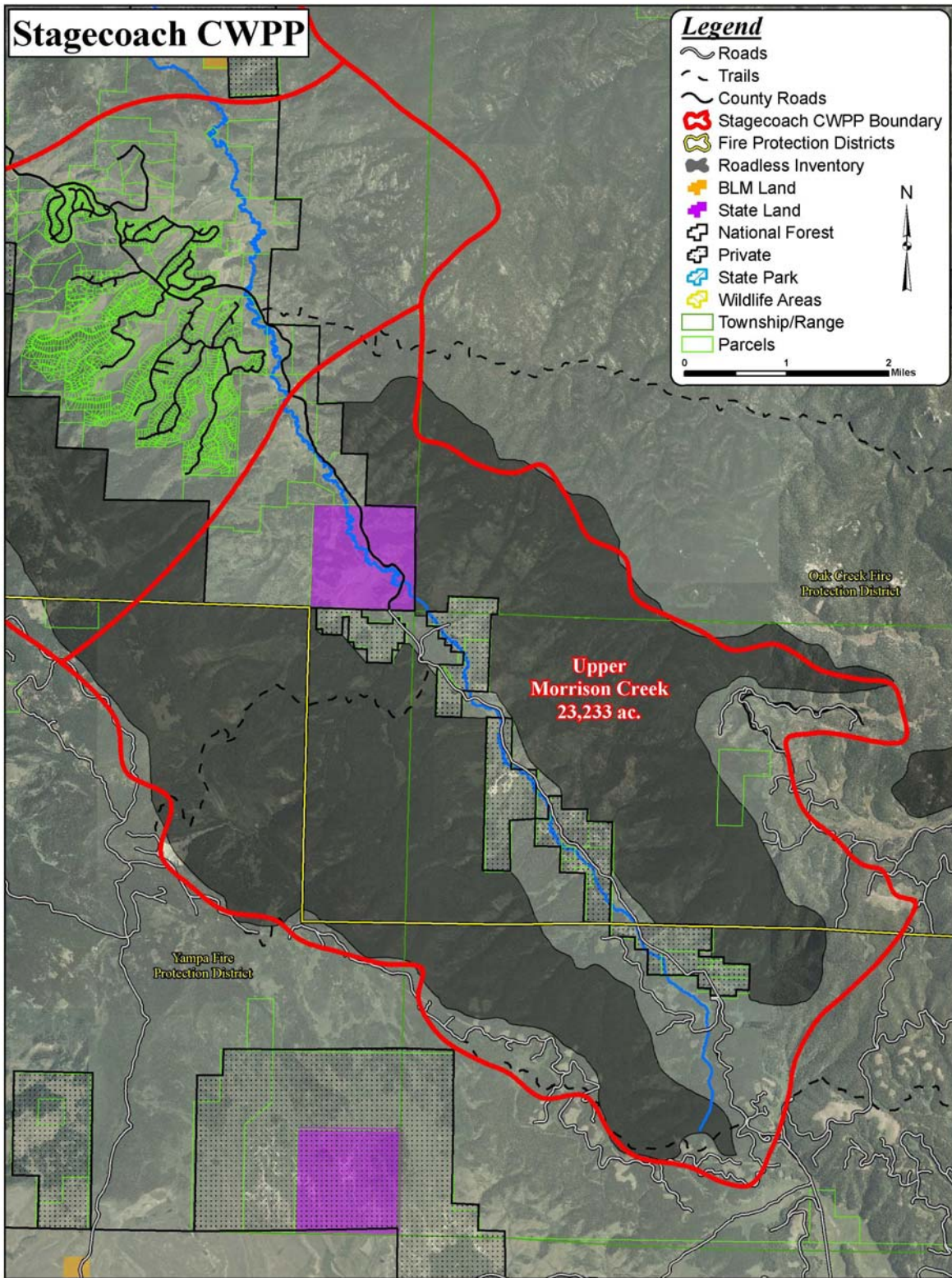
Areas containing critical human infrastructure and values include but are not limited to: escape routes, watersheds and municipal water supplies, viewsheds and power or communication structures. These include:

- Lower Morrison Creek (to include CR 14 to Mile Marker 5 on CR 16)
- Middle Morrison Creek (to include CR 16 Mile Marker 5 to 8)
- Upper Morrison Creek (to include CR 16 Mile Marker 8 to 19)
- U.S. Forest Service Roads
- Morrison Creek Metropolitan Water & Sanitation District Water Treatment Plant
- Western Area Power Association Line
- Stagecoach Reservoir Dam & Hydro-Power Plant
- Yampa Valley Electric Substation at RCR 14 and 16 / Yampa Valley Distribution Line on CR 16
- Resort Band and Zirkel Wireless Internet









STEP 5 – COMMUNITY RISK ASSESSMENT

Inserted in this section is the Stagecoach Area Community Wildfire Protection Plan Risk Assessment completed during a community meeting Tuesday, April 10, 2007 attended by 21 residents (listed in Appendix).

Community protection is the responsibility of everyone involved. Community Wildfire Protection Plans will facilitate agency decision-making and prioritization of projects. Fire can come from within or without the Morrison Creek watershed Wildland Urban Interface. To follow are some of the hazards and values at risk identified by the community.

Fuel Hazards and Risk of Wildfire Occurrence

- Mountain pine beetle and spruce bark beetle activity across the landscape and within the Wildland Urban Interface boundary is resulting in a dead and dying conifer forest. This significant mortality is increasing hazardous fuel loading on private and public lands. These increases are both short and long term, unless treated. If left untreated, this increase of hazardous fuels will increase the risk of wildfire within the Wildland Urban Interface.
- In addition, area forest health is further negatively impacted by mistletoe infestation as well as the extended drought conditions.
- Prevailing winds are from the west and southwest, making the forests south and west of the Morrison Creek watershed Wildland Urban Interface are currently classified as high risk fire areas.
- In a lodgepole forest, it is reasonable to expect that a fire will ultimately happen. It is difficult and usually impossible to control a crown fire. A wildland fire must be able to transition from crown fire to a ground fire before control can occur.
- Risks of wildfire can also include humans starting fires involving recreation, accidental, burning, etc.

Homes and Businesses at Risk

Homes and Businesses

- Homes in the Wildland Urban Interface include Morningside Subdivision, Horseback Subdivision, Blackhorse I & II Subdivisions, Skyhitch I - IV Subdivisions, South Station I & II Subdivisions, High Cross Subdivision, Overland Subdivision, South Shore Subdivision, Meadowgreen Subdivision, Eagleswatch, Billy Kidd Ranches, Blue Valley Ranches, Coyote Run, Green Ridge Ranches, Lynx Basin, Red Hawk, Ski View Estates, Snokomo Estates, Woodland Retreat, Young's Creek, Morrison Divide Ranch, Greenridge Ranch, Lakeview Meadows, Neighborhoods at Young's Peak and The Meadows at Stagecoach.

- Businesses in the Wildland Urban Interface include Stagecoach State Park, Marina at Stagecoach State Park, High Meadows Guest Ranch, Hideaway Ranch, Mt. Elim Bible Camp, Stagecoach Ski Area, Dam and Hydro-Power Plant, Division of Wildlife interests, Stagecoach Fire Station I, Morrison Water and Sanitation facilities, Working & Historic Ranches, Trades/Heavy Equipment and Location neutral home-based businesses.

Roads, Driveways and Structures

- Roads signs are present in most outlying areas of the Morrison Creek watershed Wildland Urban Interface, including county, state and U.S. Forest Service roads.
- For Middle and Upper Morrison Creek sub areas most roads and driveways are dirt. Lower Morrison Creek sub area has few paved roads and some are gravel and/or dirt.
- Majority of roads in subdivisions will only support one (1) lane of traffic for pick-up's and emergency vehicles. CR 16 will support two (2) lanes of traffic.
- Few loop roads exist in the Middle Morrison Creek sub area, most loop roads exist in the Lower Morrison Creek sub area and none exist in the Upper Morrison Creek sub area for Morrison Creek watershed Wildland Urban Interface. Most of the roads through out Stagecoach are dead end roads. Most roads do not have adequate turnaround space for emergency equipment.
- The presence of snow and mud limit seasonal access to few roads and driveways in the Wildland Urban Interface.
- Most driveways meet width and height clearance and road grades are adequate for emergency equipment.
- Few individual homeowners have posted their name & address at the end of their driveways. This is important.
- Many homes and other structures within the Wildland Urban Interface have fire safe roofing as opposed to wood shake.
- Most homes are constructed of wood products and have attached wooden decks or porches.
- Some homes have defensible space around them, but many don't meet the Colorado State Forest Service fire wise requirements.
- Some, but definitely not all, houses and other structures are visible from the main roads. Visibility from the road allows firefighters in emergency situations to make decisions regarding defensibility, fire structures as well as consider safety factors for firefighters.

Bridges, Cattle Guards, Culverts, and Gates

- All bridges, gates, cattle guards, and culverts that are on Routt County Roads will support emergency equipment.
- Some gates are locked, but most are accessible.

Utilities

- All land line telephone service lines are below ground for Lower & Middle Morrison Creek sub area. Upper Morrison Creek sub area most telephone service lines are above ground.
- Limited cell phone coverage can be found in the Morrison Creek watershed.
- Electrical distribution lines are found above ground and most service lines are below ground.
- Few propane tanks are above ground and nearly all are placed a safe distance from structures. Most underground propane tanks are marked.
- There are no natural gas lines in the Morrison Creek watershed Wildland Urban Interface.

Water

- Most homes in Upper and Middle Morrison Creek sub areas have wells as a primary water source.
- Most subdivisions in Lower Morrison Creek sub area are using central water systems.
- Few houses have a cistern.
- There are some livestock and wildlife ponds present in the Wildland Urban Interface. Middle Morrison Creek sub area: Johnson Pond @ mile marker 6.5 on CR 16, Lou DeQuine's Pond at mile marker 7 on CR 16 and Parker's Pond at mile marker 5.5 on CR 16.
- Morrison Creek Metropolitan Water and Sanitation District Water Treatment Plant, Storage tanks, pump station and Stagecoach State Park are key values of the Wildland Urban Interface.

Historical Values at Risk

- Cole Ranch
- Diamond Window Cabin
- Mt. Elim Bible Camp

Other Community Values at Risk

- Viewsheds
- Scenery
- Wildlife
- Homes
- Human Life
- National Forests / State Lands
- Stagecoach State Park
- Trails / Trailheads
- Watersheds / Fisheries / Recreation
- Communication Towers
- Campgrounds
- Agricultural Improvements / Heritage
- Yampa Valley Electric Substation
- Oak Creek Fire Protection District Stagecoach Station I

Local Preparedness and Firefighting Capability

Points Considered

- Generally speaking, the Morrison Creek watershed Wildland Urban Interface has good fire fighting and emergency services capability. Oak Creek has a full time chief and a full time deputy chief as well as three equipped stations and high interagency coordination.
- Designating pre-planned traffic flow evacuation routes would facilitate smoother traffic flow in an emergency. There are currently no evacuation plans known.
- Regarding communication systems, residents that have local telephone numbers listed, therefore a reverse 911 communication system could be used to communicate a fire emergency. With cell phone use on the rise, this could be a concern for reverse 911 communication systems.
- It was noted that, in the early stages of a potential emergency fire situation, local people might organize a calling tree to keep neighbors informed of fire progress.
- Concerns were expressed by agency representatives regarding use of a neighbor to neighbor phone trees. Fire safety officials would organize and implement communication with Wildland Urban Interface residents. It was emphasized that if an evacuation order is ever made, residents must NOT stop to call neighbors.
- Alternative places to initially gather and communicate were discussed.
- The Morrison Creek watershed Wildland Urban Interface does have some animals to consider. Individual livestock and pet owners may wish to develop evacuation plans for their animals as a supplement to their own personal evacuation plans.

- Residents with special needs must be considered including people with specific mobility issues or medical conditions that may require assistance.
- Morrison Creek water supply – identify sources and put agreements with owners in place, install and build new water sources.
- It was noted that post-trauma crisis counseling may be needed in the aftermath of a fire.
- Fire Insurance Protection Ratings as rated by Insurance Services Office, Inc. (ISO) for the Oak Creek Fire Protection District include:
 - a) **Rating #5** – Homes located within five road miles of the Oak Creek Fire Protection District Stagecoach Station I and 1000 ft of a pressurized hydrant.
 - b) **Rating #9** – Homes located within five road miles of the Oak Creek Fire Protection District Stagecoach Station I but not within 1000 feet of a pressurized hydrant.
 - c) **Rating #10** – Homes located more than five road miles from the Oak Creek Fire Protection District Stagecoach Station I.

Morrison Divide Ranch Homeowners have developed a “Fire Plan” that will be part of the Community Wildfire Protection Plan.

Special Citizen Requests

- All associated fire and emergency plans should be advertised as easily accessible for residents to review by placement of copies in the library, the Routt County Courthouse, fire stations, websites, state and federal forestry facilities, or other strategic community sites.
- Morrison Creek watershed Wildland Urban Interface residents expressed concerns and the need for better fire danger and fire ban signage and placement of signage in the Wildland Urban Interface. Larger, more obvious and emphatic fire ban poster signage was requested.

STEP 6 – COMMUNITY FIRE HAZARD REDUCTION PRIORITIES AND RECOMMENDATIONS

Inserted in this section are the Stagecoach Area Community Wildfire Protection Plan Priorities and Recommendations endorsed by the community during a meeting Tuesday, May 8, 2007 attended by 16 residents (listed in Appendix).

Fuel Treatment Projects

Highest Priorities

- For roads create a safer ingress and egress in the event of a wildfire: County Road 16, Pima, Seneca, Ute Trail, Colt Trail and 1st and 2nd Filly Trail.
- Power line clearance (Maricopa mile marker 6 to 7 on County Road 16).
- Fuel Treatment reduction in Eagleswatch Subdivision.
- Defensible space (Well houses and Booster stations).
- Fuel treatment project for U.S. Forest Service to look at near the southwest portion of Middle Morrison Creek sub area.
- Fuel reduction on State Parks and particularly Division of Wildlife to be consistent with Division of Wildlife management objectives.
- Hideaway Ranch.
- Mt. Elim vicinity (Bible Camp).
- Utilize existing roads for fuel breaks, thin adjacent.
- Colorado State Forest Service is doing a timber sale on their state section off of County Road 16. (Summer of 2007).
- Treat fuels near homes, promote defensible space projects. Larger forest management projects, whether commercial timber sales or fuels treatment operations, can potentially provide significant protection to communities from wildfire.
- Large scale timber management projects can make the biggest impact toward protecting a community.

Other Priorities

- For roads create a safer ingress and egress in the event of a wildfire: Schussmark Trail, Greenridge Road, Halter, Hockeye, County Road 212 and Mt. Meadow Lane.

Projects to Reduce Structural Ignitability

Regarding specific priorities and recommendations beyond those already described above that are in progress or upcoming, Stagecoach community members noted the following projects be completed in the Stagecoach Area to reduce structural ignitability.

Highest Priorities

- Private landowners in the Morrison Creek watershed Wildland Urban Interface are encouraged to complete defensible space projects and reduce other fire hazards on their personal property. This includes improving ingress and egress routes for emergency fire services as outlined in the Routt County Fire Management Plan. FireWise projects completed by individuals can lend protection to individual homes and neighborhoods as well as lessen the chances of a wildfire starting from within the Wildland Urban Interface. Few Wildland Urban Interface residents have completed FireWire projects on their property. Recognizing that people cannot be forced to complete FireWise projects on their property, all Morrison Creek watershed Wildland Urban Interface landowners are encouraged to create defensible space and reduce other fire hazards on their personal property.
- Facilitate Oak Creek Fire Protection District evaluating defensibility of each property in the Morrison Creek watershed Wildland Urban Interface. Find funds to support this critical activity.
- Standardize and prominently display address nomenclature for all homes and structures in the Morrison Creek Watershed Wildland Urban Interface.
- Two significant chipper projects are moving forward. The first is general fuel reduction by removing slash and deadfall in the Middle Morrison Creek area - specifically slash in the Cole Hill area and beetle kill as private landowners permit. The second thrust is the removal of volunteer lodge pole growth which is crowding subdivision roads in the Middle Morrison Creek area. The mulch will be made available to the public at a local nursery.
- Utilize county and Forest Service roads where feasible as anchors for fuel breaks and fire lines.
- Explore and promote market opportunities for woody materials removed in conjunction with fuel treatments.
- Establish proper right-of-way clearance for all power lines in the area.
- Continue to educate the community regarding FireWise concepts.
- Explore becoming a FireWise community.

Other Priorities

- Encourage Routt County to participate and cooperate through planning.

Emergency Preparedness

Highest Priorities

- Encourage residents to put together individual evacuation plans including addressing any existing pet and livestock issues.
- Ensure with the appropriate agencies, that emergency notification procedures and evacuation plans are in place and clearly understood by residents.
- Assist the fire department by following FireWise homeowner guidelines and create defensible space around homes and structures.
- Identify a pre-established evacuation destination.
- Identify community members to serve as key communicators in the event of a fire requiring evacuation to help monitor a check off list of residents as they are leave.
- Identify residents in Wildland Urban Interface that may have mobility issues. Inform Oak Creek Fire Protection District regarding residents who have mobility issues so that they can include that information in the books they carry in the trucks.
- Create and disseminate a map highlighting alternate evacuation routes.
- Stagecoach Area community members should discuss development of emergency preparedness/evacuation plans.
- Identify how to deal with livestock evacuation if owners are absent and a fire occurs.
- In the event of a fire and an evacuation, residents should use the route that is the shortest distance between their property and an exit road. They should then stay to the right, get out to a county road or highway, keep moving and do not stop as stopping to talk may cause congestion and impede evacuation.
- Stagecoach Area residents request all roads are properly maintained with signage.
- Annual review of Community Wildfire Protection Plan.

Other Priorities

- Support the Oak Creek Fire Fighters of the Oak Creek Fire Protection District and encourage residents to become volunteers.
- State Parks and U.S. Forest Service will be responsible for communication with campground, forest and park visitors.
- The tables below outline Morrison Creek watershed Wildland Urban Interface projects, responsible parties and level of priority for implementation.

FUEL TREATMENT PROJECTS

| PROJECT OR ACTIVITY | RESPONSIBLE PARTY | PRIORITY LEVEL | DATE COMPLETED |
|---------------------------------------------------------------------------------------------------------------------------------------|--------------------------------------------------------------------|----------------|----------------------------------------------------------------------|
| For roads create a safer ingress and egress: County Road 16, Pima, Seneca, Ute Trail, 1st and 2nd Filly Trail and Colt Trail | Stagecoach Property Owners Association | High | Colt Trail(1/4 mile road widening) & CR 16 @ MM 6.6 – Summer of '07' |
| Other Roads: Schussmark Trail, Greenridge Road, Halter, Horseback, Hockeye, County Road 212, Mt. Meadow Lane | Stagecoach Property Owners Association | Other | Horseback (1/2 mile of road widening) – Summer of '07' |
| Power line clearance (Maricopa mile marker 6 to 7 on County Road 16) | Stagecoach Property Owners Association | High | |
| Fuel Treatment Reduction in Eagleswatch Subdivision | Stagecoach Property Owners Association and Eagleswatch Subdivision | High | |
| Defensible Space (Well houses and Booster Stations) | Morrison Creek Metropolitan Water Sanitation District | High | |
| Southwest portion of Middle Morrison Creek sub area | U.S. Forest Service | High | Planned |
| Mt. Elim vicinity (Bible Camp) | Mt. Elim Bible Camp | High | Planned |
| Hideaway Ranch | Hideaway Ranch | High | |
| Fuel Reduction on State Parks and particularly Division of Wildlife to be consistent with Division of Wildlife management objectives. | Division of Wildlife, State Parks | High | |
| Review for treatment on all state lands within the Wildland Urban Interface | Colorado State Forest Service | High | |
| Timber sale on state land off of County Road 16 | Colorado State Forest Service | High | Completed December 2007 |
| Treat fuels near homes, FireWise | Private landowners | High | |

PROJECTS TO REDUCE STRUCTURAL IGNITABILITY

| PROJECT OR ACTIVITY | RESPONSIBLE PARTY | PRIORITY LEVEL | DATE COMPLETED |
|-----------------------------------------------------------------------------------------------------------------------------------------------------------------------------------------------------------------------------------------------------------|-----------------------------------------------------------------------------------------------------------|----------------|----------------------------|
| Educate community and individual subdivisions about Fire Wise concepts | Colorado State Forest Service, Oak Creek Fire Protection District, Stagecoach Property Owners Association | High | |
| Chipper projects – Colby residence, Ken Collins residence, Tony Stich residence, Ken Burgess 3 lots, Kerry Taylor residence, ½ mile Horseback road widening, ¼ mile Colt Trail widening and removed trees on edge of CR 16 @ MM 6.6 (~total of 300 yards) | Stagecoach Property Owners Association, Colorado State Forest Service | High | Summer of '07' |
| Additional chipper projects – Richard Parker ~250 trees, Bill McKinley & Eagles Watch | | | Planned for summer of '08' |
| Create defensible space and reduce fire hazards on private property | Colorado State Forest Service and Private landowners | High | |
| Evaluate defensibility of private property | Colorado State Forest Service, Oak Creek Fire Protection District and Private landowners | High | |
| Display address nomenclature for all homes and structures in the Oak Creek Fire Protection District | Private landowners, Oak Creek Fire Protection District | High | |

PROJECTS TO INCREASE EMERGENCY PREPAREDNESS

| PROJECT OR ACTIVITY | RESPONSIBLE PARTY | PRIORITY LEVEL | DATE COMPLETED |
|-------------------------------------------------------------------------------------------|-------------------------------------------------------------------------------------------------------------------------------------------------------------------------------------------------------------------------------------------------------|----------------|----------------------|
| Post evacuation route signs | Stagecoach Property Owners Association | High | |
| Develop Stagecoach Area individual and community evacuation plans | Landowners, Colorado State Forest Service, Oak Creek Fire Protection District, Stagecoach Property Owners Association | High | |
| Identify water sources (with agreements in place) | Oak Creek Fire Protection District and U.S. Forest Service | High | |
| New cell towers for increased cell phone coverage | Cell Phone Companies | High | |
| For roads ensure creation of safer ingress and egress in the event of a wildfire | Stagecoach Property Owners Association, Oak Creek Fire Protection District, Colorado State Forest Service and U.S. Forest Service | High | |
| Identify residents with mobility issues and inform Oak Creek Fire Protection District | Stagecoach Area residents | High | |
| Annual review of Community Wildfire Protection Plan | Stagecoach Area residents, Oak Creek Fire Protection District, Colorado State Forest Service, U.S. Forest Service, State Parks, Division of Wildlife, Bureau of Land Management, Core Management Group and Morrison Creek Water & Sanitation District | High | Completed 4-28-08 |
| Recruit Stagecoach Area residents to become members of Oak Creek Fire Protection District | Stagecoach Area residents and Oak Creek Fire Protection District | Other | Planned |
| Identify community members to serve as communication liaisons in the event of evacuation | Stagecoach Area residents | Other | |
| Communication with campgrounds, | U.S. Forest Service and | Other | |

| | | | |
|--------------------------------|----------------------------------------------------------------------------------------------|-------|--|
| forest and park visitors | State Parks | | |
| Properly maintain road signage | U.S. Forest Service, Bureau of Land Management and Colorado State Forest Service | Other | |

STEP 7 – ACTION PLAN AND ASSESSMENT STRATEGY

- The Stagecoach Area community recommends all above stated priorities be considered for projects to accomplish in this Wildland Urban Interface. All projects listed are considered valuable and important to the residents of this Wildland Urban Interface. Private residents, Routt County, Oak Creek Fire Protection District, Colorado State Forest Service, Colorado Division of Parks and Outdoor Recreation, the Bureau of Land Management, Division of Wildlife and the U.S. Forest Service will be responsible for initiating projects based on land ownership and/or jurisdiction.
- The community recognizes that all private individuals, Routt County, and partnering agencies experience budget constraints. However, the projects listed in this Community Wildfire Protection Plan are considered critical and important in the effort to protect life and property in the Oak Creek Fire Protection District and therefore deserve immediate attention.
- The Oak Creek Fire Protection District and Stagecoach Area community recommends that projects listed above as *Highest Priorities* be initiated by 2007-2008.
- Projects listed above as *Other Priorities* are projects that may be accomplished immediately or may require further community and/or agency collaboration and action prior to implementation.

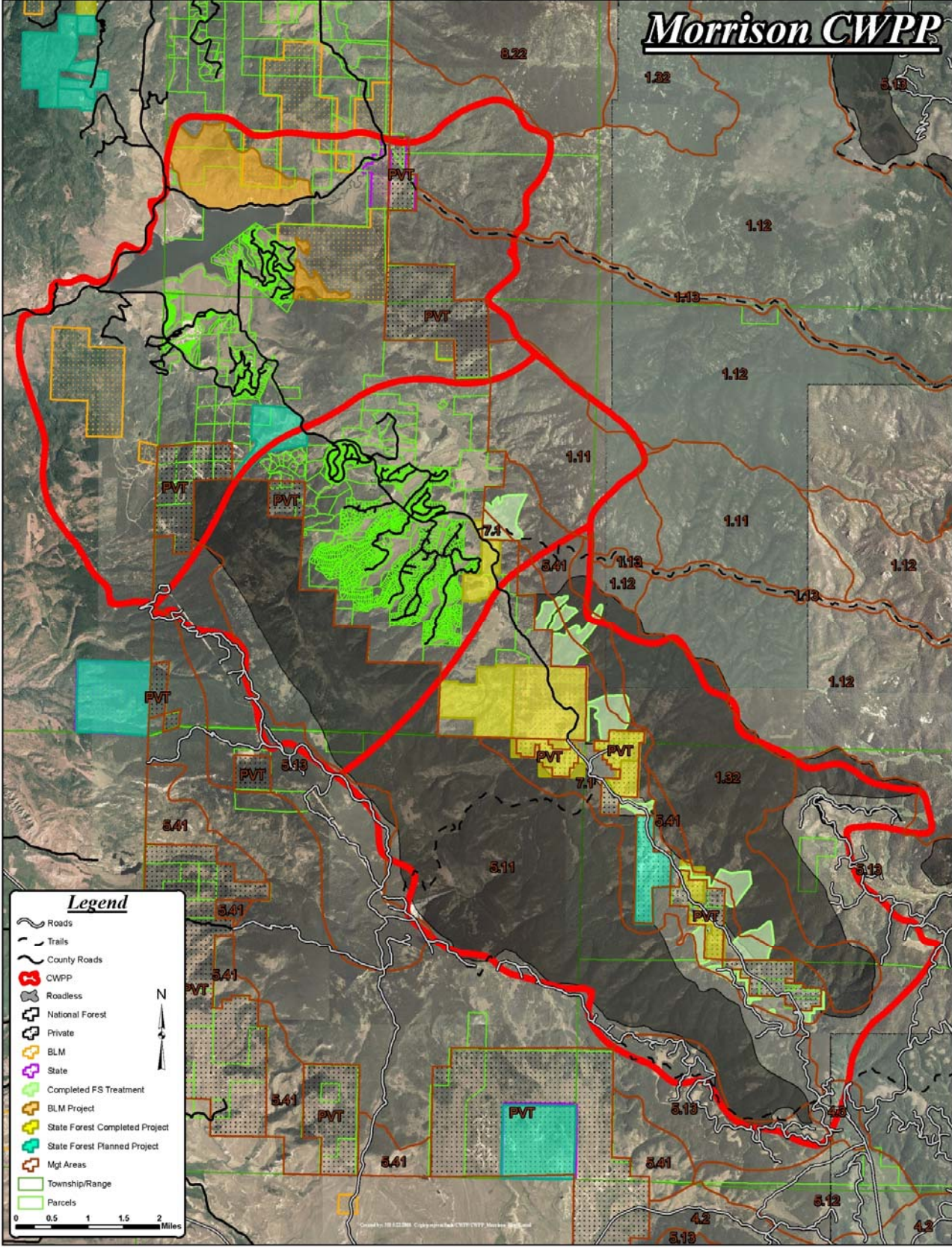
STEP 8 – FINALIZING THE COMMUNITY WILDFIRE PROTECTION PLAN

The Stagecoach Area Community Wildfire Protection Plan:

- Was collaboratively developed. Interested parties and federal land management agencies managing land in the vicinity of Stagecoach have been invited to participate and provide input to the process by mail, e-mail, telephone, and face to face during Community Wildfire Protection Plan meetings.
- Identified and prioritized areas for hazardous fuel reduction treatments and recommends the types and methods of treatment that will protect the Oak Creek Fire Protection District.
- Recommends measures to reduce the ignitability of structures throughout the area addressed by the plan.
- The Stagecoach Area community will review and assess progress on recommended projects and update their Community Wildfire Protection Plan during their annual meeting. All partnering agencies are strongly encouraged to participate by providing updates, including a list of accomplishments, during this annual meeting. Changes deemed significant by the community warrant changes to the Community Wildfire Protection Plan.

Appendix

Morrison CWPP

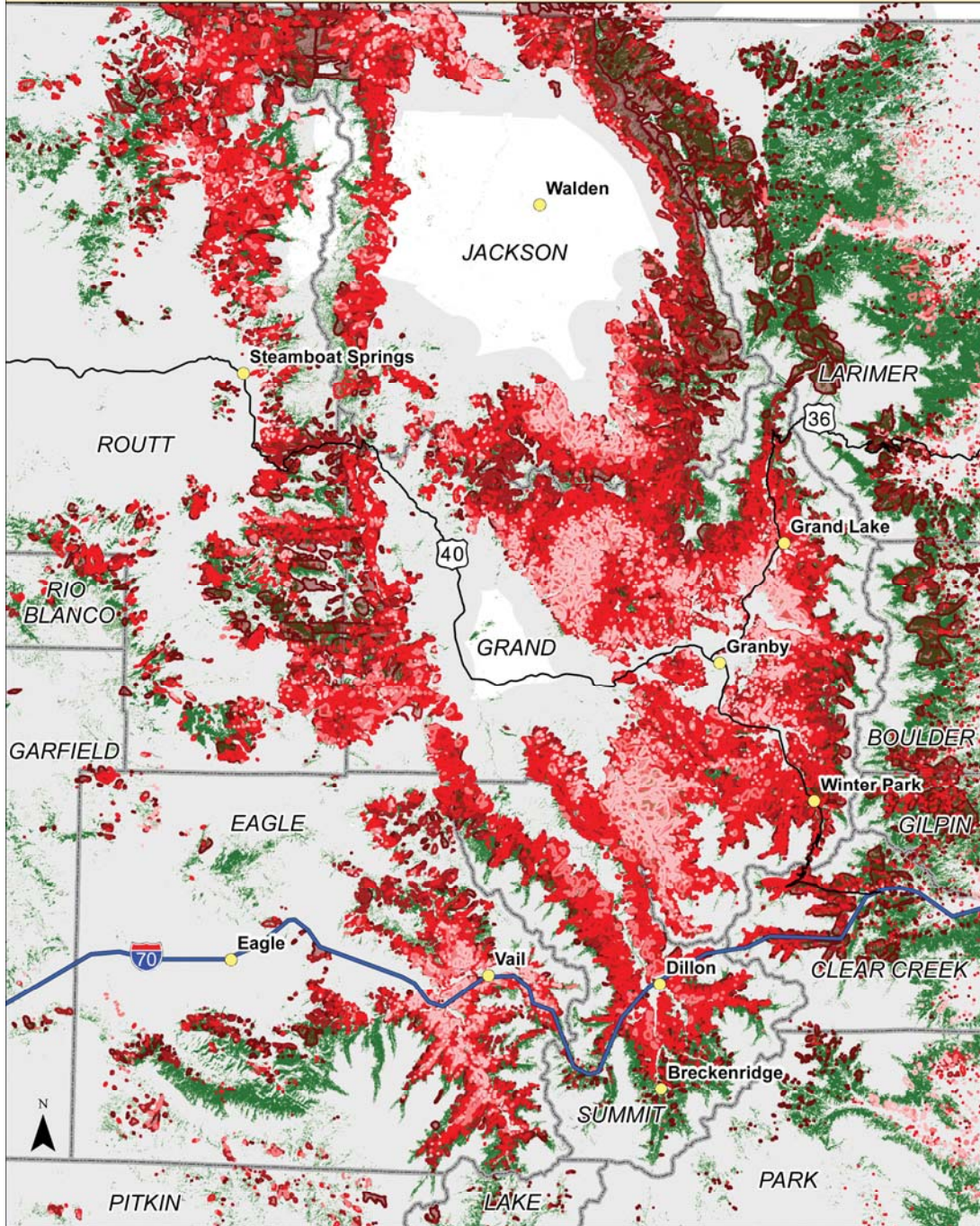


Legend

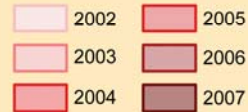
- Roads
- Trails
- County Roads
- CWPP
- Roadless
- National Forest
- Private
- BLM
- State
- Completed FS Treatment
- BLM Project
- State Forest Completed Project
- State Forest Planned Project
- Mgt Areas
- Township/Range
- Parcels

0 0.5 1 1.5 2 Miles

Mountain Pine Beetle - Northern Colorado Infestation in Lodgepole Pine 2002 - 2007



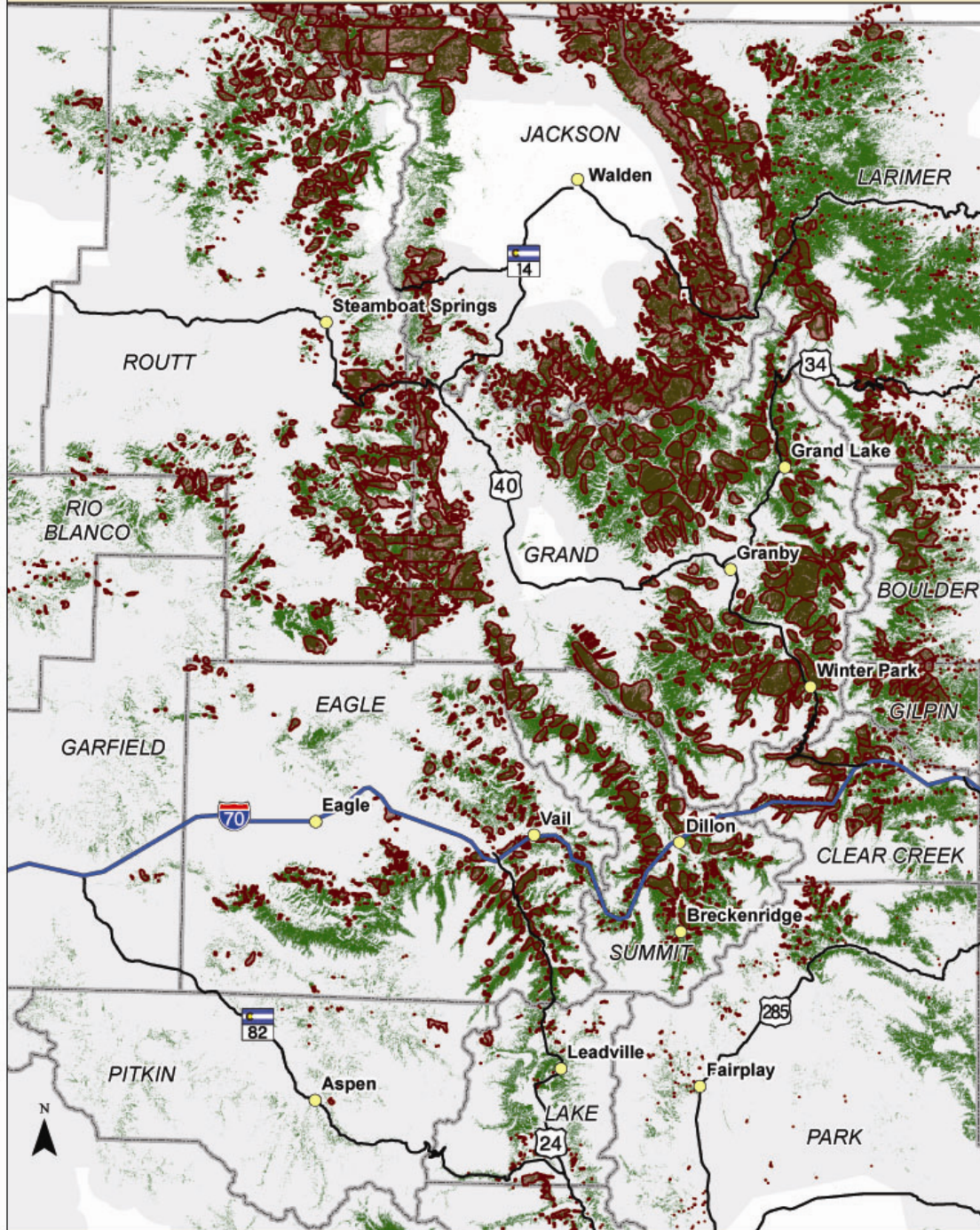
Mountain Pine Beetle:



0 5 10 20 Miles

Date Created: 5/12/2008
 Map By: CSFS GIS Program
 Data Sources:
 USDA Forest Service, Forest Health Management
 Colorado Vegetation Classification Project,
 Colorado Division of Wildlife

Mountain Pine Beetle - Northern Colorado Infestation in Lodgepole Pine 2007



Mountain Pine Beetle:

2007

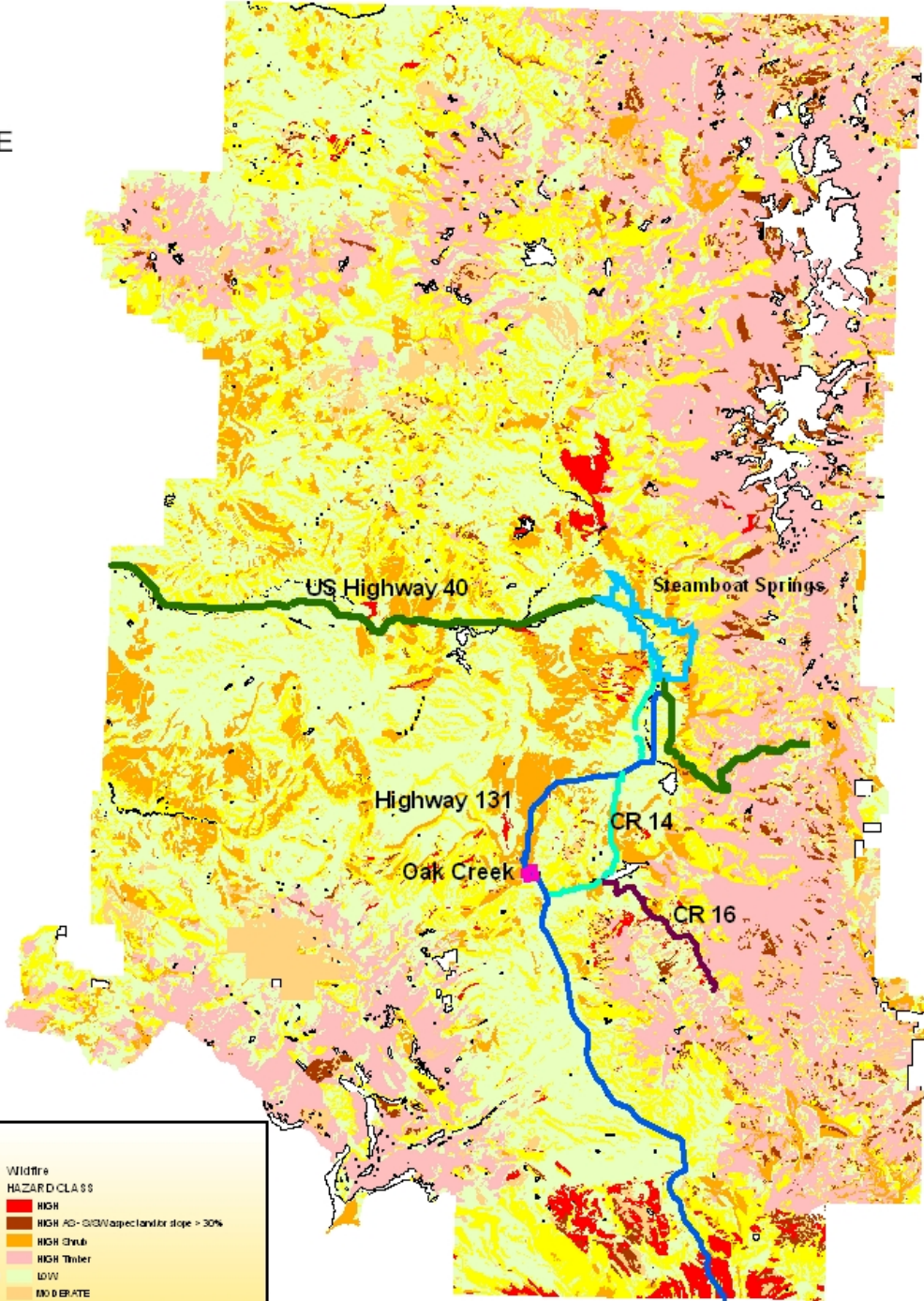
- Lodgepole Forests
- Aerial Survey Areas
- County Boundary

- Interstates
- Major Roads
- Cities

0 5 10 20 Miles

Date Created: 5/12/2008
 Map By: CSFS GIS Program
 Data Sources:
 USDA Forest Service, Forest Health Management
 Colorado Vegetation Classification Project,
 Colorado Division of Wildlife

Routt County Fire Hazard Map



Legend

| | |
|----------------------------|---------------------------------------------|
| cities | Wildfire |
| CITY | HAZARD CLASS |
| Steamboat Springs | HIGH |
| Oak Creek | HIGH AD-GSD (aspect and/or slope > 30%) |
| roads | HIGH Shrub |
| ROAD_NAME | HIGH Timber |
| Colorado State Highway 131 | LOW |
| County Road 14 | MODERATE |
| County Road 16 | MODERATE AD-GSD (aspect and/or slope > 30%) |
| US Highway 40 | NO HAZARD |

Resource Materials Used

- *Healthy Forest Restoration Act of 2003*
- *Preparing a Community Wildfire Protection Plan, A Handbook for Wildland-Urban Interface Communities*, March 2004; Communities Committee, National Association of Counties, National Association of State Foresters, Society of American Foresters, Western Governors' Association
- *Community Wildfire Protection Plans-Guidelines for Implementation*, Colorado State Forest Service, August 2005
- *Leaders Guide Supplement*, International Association of Fire Chiefs
- *Routt County, Colorado Fire Management Plan, 2003*
- *Stagecoach Community Plan, Routt County, Colorado, September 1999*
- *Stagecoach Fuel Reduction Project Environmental Assessment, Medicine Bow-Routt National Forest, January 14, 2002*

**Stagecoach Area Community Wildfire Protection Plan
Organizational Meeting
February 6, 2007, Oak Creek Fire Protection District (OCFPD)
Stagecoach Station I Participant List**

Listed in order of sign up sheet:

1. Chris Zuschlag
2. Kent Foster
3. Chuck Wisecup
4. Ken Burgess
5. Steve Colby
6. Craig Preston
7. Lynn Barclay
8. Oscar Martinez
9. Libbie Miller
10. Tony Stich
11. Tony Morgan
12. Tom Erps
13. Earl Halsnes
14. Steve Hayslip
15. Debbie Hunt
16. Danielle Domson
17. Dan Miller
18. Bill Chase
19. Leland Miller
20. CD Johnson
21. Sarah Woodmausee
22. Mike Roach

**Stagecoach Area Community Wildfire Protection Plan
Community Base Map Established
March 13, 2007, Oak Creek Fire Protection District (OCFPD)
Stagecoach Station I Participant List**

Listed in order of sign up sheet:

1. Kent Foster
2. John Twitchell
3. Oscar Martinez
4. Sam Duerksen
5. Lynn Barclay
6. Chuck Wisecup
7. Chuck Vale
8. Tony Morgan
9. Chris Zuschlag
10. Libbie Mille
11. Ken Depaul
12. Steve Hayslip
13. Danielle Domson
14. Jean Alperti
15. Mary Alice Page-Allen
16. Ivars Mikelsons
17. Wendy Smith Mikelsons
18. Ken Burgess
19. Steve Colby
20. Denny Stamp
21. Mike Petix
22. Don Alperti
23. Pam Williams
24. Tom Garite
25. Cathy Garite
26. Bob Woodmausee
27. Sarah Woodmausee
28. Mike Roach
29. Jim Kelly

**Stagecoach Area Community Wildfire Protection Plan Risk Assessment
April 10, 2007, Oak Creek Fire Protection District (OCFPD)
Stagecoach Station I Participant List**

Listed in order of sign up sheet:

1. Tara Mehall
2. Kent Foster
3. Chuck Wisecup
4. Tony Morgan
5. Thomas Erps
6. Sam Duerksen
7. Lynn Barclay
8. Libbie Miller
9. Don Reed
10. Mike Petix
11. Steve Colby
12. Gail Martinez
13. Audrey Kruse
14. Ken Kruse
15. Joseph Pattillo
16. Mike Roach
17. Jim Myers
18. Ivars Mikelsons
19. Craig Preston
20. Bob Woodmausee
21. Diann Ritschard

**Stagecoach Area Community Wildfire Protection Plan
Priorities and Recommendations
May 8, 2007, Oak Creek Fire Protection District (OCFPD)
Stagecoach Station I Participant List**

Listed in order of sign up sheet:

1. Chuck Wisecup
2. Chris Zuschlag
3. Ken Burgess
4. Sam Duerksen
5. Ken DePaul
6. Craig Preston
7. Tara Mehall
8. Lynn Barclay
9. Tony Stich
10. Lou DeQuine
11. Lydia DeQuine
12. Steve Colby
13. Murray Selleuk
14. Ken Collins
15. Mike Petix
16. Don Reed

**Stagecoach Area Community Wildfire Protection Plan Draft Review
July 10, 2007, Oak Creek Fire Protection District (OCFPD)
Stagecoach Station I Participant List**

Listed in order of sign up sheet:

1. Chris Zuschlag
2. Ken Burgess
3. Tara Mehall
4. Chuck Wisecup
5. Steve Hayslip
6. Oscar Martinez
7. Tony Stich
8. Mike Roach

**Stagecoach Area Community Wildfire Protection Plan Final Review
August 14, 2007, Oak Creek Fire Protection District (OCFPD)
Stagecoach Station I Participant List**

Listed in order of sign up sheet:

1. Ken Burgess
2. Lynn Barclay
3. Oscar Martinez
4. Libbie Miller
5. Craig Preston
6. Chris Zuschlag
7. Steve Colby
8. Ralph Nultrmeier
9. Ken Collins
10. Mike Petix
11. Jim Kelly
12. Chuck Wisecup
13. Mike Roach

**Stagecoach Area Community Wildfire Protection Plan
Annual Review
April 28, 2008, Oak Creek Fire Protection District (OCFPD)
Stagecoach Station I Participant List**

Listed in order of sign up sheet:

1. Chris Zuschlag
2. Lynn Barclay
3. Lance Broyles
4. Sam Duerksen
5. Craig Preston
6. Tara Mehall
7. Jenny Switzky
8. Chuck Wisecup