

## Community Wildfire Protection Plan

Red Feather Lakes  
Larimer County, Colorado

February 1, 2006  
UPDATED April 26, 2007

### Introduction

This *Community Wildfire Protection Plan* (CWPP) was developed by Red Feather Lakes with guidance and support from Colorado State Forest Service, United States Forest Service, Larimer County Emergency Services, Front Range Fuel Reduction Partnership, and the Larimer County Emergency Services. This CWPP supplements several Larimer County documents referenced in Appendix A. Information in this plan will be provided at a level of specificity determined by the community and appropriate agencies.

The process of developing a CWPP can help a community clarify and refine its priorities for the protection of life, property, and critical infrastructure in the wildland-urban interface. It can also lead community members through valuable discussions regarding management options and implications for the surrounding watershed.

### Community / Agencies / Interested Parties Involved

Representatives involved in the development of the Red Feather Lakes CWPP are included in the following table. Their name, organization, and roles and responsibilities are indicated below:

#### **CWPP Development Team**

<b>Name</b>	<b>Organization</b>	<b>Roles / Responsibilities</b>
<u>Marilyn Ramming</u> <u>Larry Caswell</u> <u>Ross Reid</u> <u>Jim Michalka</u> <u>Susan Bradley</u>	Community Representatives	Primary development of CWPP and decision making – community risk and value assessment, development of community protection priorities, and establishment of fuels treatment project areas and methods
<u>Clarissa Meeks</u> <u>Dan Carlson</u> <u>Kerry Gibson</u>	Red Feather Lakes Volunteer Fire Department	Primary development of CWPP and decision making – community risk and value assessment, development of community protection priorities, and establishment of fuels treatment project areas and methods
<u>Denise White</u> <u>Boyd Lebeda</u>	Colorado State Forest Service	Facilitation of planning process and approval of CWPP process and minimum standards. Provides input and expertise on forestry, fire and fuels, and FireWise concepts.
<u>Tony Simons</u>	Larimer Co. Emergency Services	Provides input and expertise on hazard assessment, defensible space, and FireWise concepts.
<u>Dick Edwards</u>	USFS	Provides input and expertise on federal lands forestry, fire and fuels, and FireWise concepts.
<u>Cyd Squarcia</u> <u>Dave Mosier</u> <u>Debra Hawkins</u> <u>Tom Fry</u> <u>Jack Reynolds</u> <u>Tony Mahan</u> <u>Katherine Timm</u> <u>Kim Schleppey</u>	Red Feather Water Storage & Irrigation Larimer County Emergency Services Red Feather Historical Society The Wilderness Society RFL Regional Council Fire Ready FRFTP FRFTP	Provides input and expertise. This could include community risk and value assessment, development of community protection priorities, and establishment of fuels treatment project areas and methods.

### Identification of Values at Risk

Using technology and local expertise, Red Feather Lakes has developed a base map and narrative of the community and adjacent landscapes of interest. This map will act as a visual aid from which community members can assess and make recommendations. The base map includes, at a minimum, the following:

- Inhabited areas and values at potential risk to wildland fire

- Areas containing critical human infrastructure—such as evacuation routes, municipal water supply structures, and major power or communication lines—that are at risk from wildfire
- A preliminary designation of the community’s Wildland Urban Interface (WUI) zone.

### Community Risk Assessment

The purpose of the community risk assessment is to help to prioritize areas for treatment and identify the highest priority uses for available financial and human resources. This section is divided into five areas of concern:

- Fuel Hazards – An evaluation of vegetation conditions within the community and on adjacent lands. Products included are:
  - Larimer County Wildfire Safety Program – Subdivision Wildfire Hazard Review
  - Larimer County Fuel Hazard Map
- Risk of Wildfire Occurrence – An evaluation of the probability of fire ignition within the community and surrounding lands.
  - Risk to homes, businesses, and essential infrastructure – An evaluation of the vulnerability of structures within the community to ignition from firebrands, radiation, and convection is currently being developed using Red Zone 3 software. This will also include an evaluation of risks to essential infrastructure such as evacuation routes, and power and communication lines.
- Risk to Other Community Values – An evaluation of risk to other community values such as wildlife habitat, recreation and scenic areas, water supplies, and landscapes of historical, economic or cultural value.
- Local Preparedness and Firefighting Capability
  - Initial response to all fire, medical and associated emergencies is the responsibility of Red Feather Lakes Volunteer Fire Department. Wildland fire responsibilities of Larimer County, Colorado State Forest Service, United States Forest Service, Bureau of Land Management and the National Park Service are described in the current *Larimer County Annual Operating Plan*. Mutual aid agreements are currently in place with Glacier View Volunteer Fire Dept., Crystal Lakes Volunteer Fire Dept., Poudre Canyon Volunteer Fire Dept. and Livermore Volunteer Fire Dept. The Red Feather Lakes Volunteer Fire Dept takes full responsibility for training, equipment, and response to fires within the boundaries of their Fire Protection District.

### Hazard Reduction Priorities

1. Establish & maintain a shaded fuel break between the Arapaho - Roosevelt National Forest and the residential areas of Red Feather Lakes. Historically, fires in the Red Feather Lakes area are most commonly classified as wind driven events. The prevailing winds during what is considered the “fire season” are from the southwesterly direction. This would indicate that our initial mitigation efforts should be directed to reducing the threat from ignitions occurring south and west of the Red Feather Lakes WUI.

- Stage 1. Extend fuel break approximately 1/3<sup>rd</sup> mile wide & 2 miles long starting from CR74E along the west edge of CR73C north to the Fire District boundary.
- Stage 2. Establish shaded fuel break on the north ½ of Section 19 running East through the north ½ of Sections 20 & 21.
- Complimentary treatments on any nearby National Forest lands.

2. Fuel reduction along both sides of all potential Evacuation routes: CR 74E, CR 162, CR 179, CR 180 and other routes as they are identified in the Evacuation Plan.

- Fuel reduction in Section 32 south of CR 169 (Deadman Rd) to protect evacuation check point area & the South & West Evacuation routes.
- Fuel reduction at each check point area as identified in the Evacuation Plan.

3. Creation of defensible space surrounding all private residences in the Red Feather Lakes Fire Protection District. Special emphasis will be placed on mitigation efforts in the Snake Lake & south Letitia Lake areas in anticipation of the USFS burn in the Dowdy Lake area. Emphasis will also include residences in the Indian Prayer Subdivision.

4. Fuel reduction in Section 21 North & East of Nokomis Lake to protect Northern evacuation route & South Nokomis Lake Subdivision.

Action Plan

Red Feather Lakes has developed an action plan which identifies roles and responsibilities, funding needs and timetables listed in Hazard Reduction Priorities. The core team will meet as needed to evaluate progress and mutually agree on treatment priorities. A few of the recent activities of the action plan include:

- Red Zone 3 data collection and response pre-planning.
- Evacuation Plan Community Meetings.
- Approved Steven’s Grant for treatment of areas adjacent to Arapaho Roosevelt National Forest in the Dowdy Lake area.
- Numerous Community Slash disposal days.
- Defensible Spaces being established.

In cooperation with the Larimer County Fire Education Group, the Larimer Fire Council, and the Red Feather Lakes Volunteer Fire Department. Red Feather Lakes supports and promotes Firewise activities as outlined in the Larimer County Fire Plan. Red Feather Lakes supports and educates its citizens in ways to reduce structure ignitibility through meeting Larimer County Building Code Requirements and utilizing Colorado State Forest Service FireWise Construction Fact Sheets.

The following community representatives / agencies have reviewed and support this *Community Wildfire Protection Plan*.

\_\_\_\_\_  
Red Feather Lakes Community Representative

\_\_\_\_\_  
Red Feather Lakes Volunteer Fire Department

\_\_\_\_\_  
Fort Collins District  
Colorado State Forest Service

\_\_\_\_\_  
Canyon Lakes Ranger District  
United States Forest Service

**Appendix A**

Larimer County Fire Plan a Community Wildfire Protection Plan (Larimer County 2004)

Larimer County Wildfire Mitigation Plan (CSFS 1998)

Recommendations for Improving Wildfire Safety in Larimer County (CSFS 1997)

Larimer County Subdivision Wildfire Hazard Review (Larimer County/CSFS 2002)

Larimer County Annual Operating Plan (updated annually)

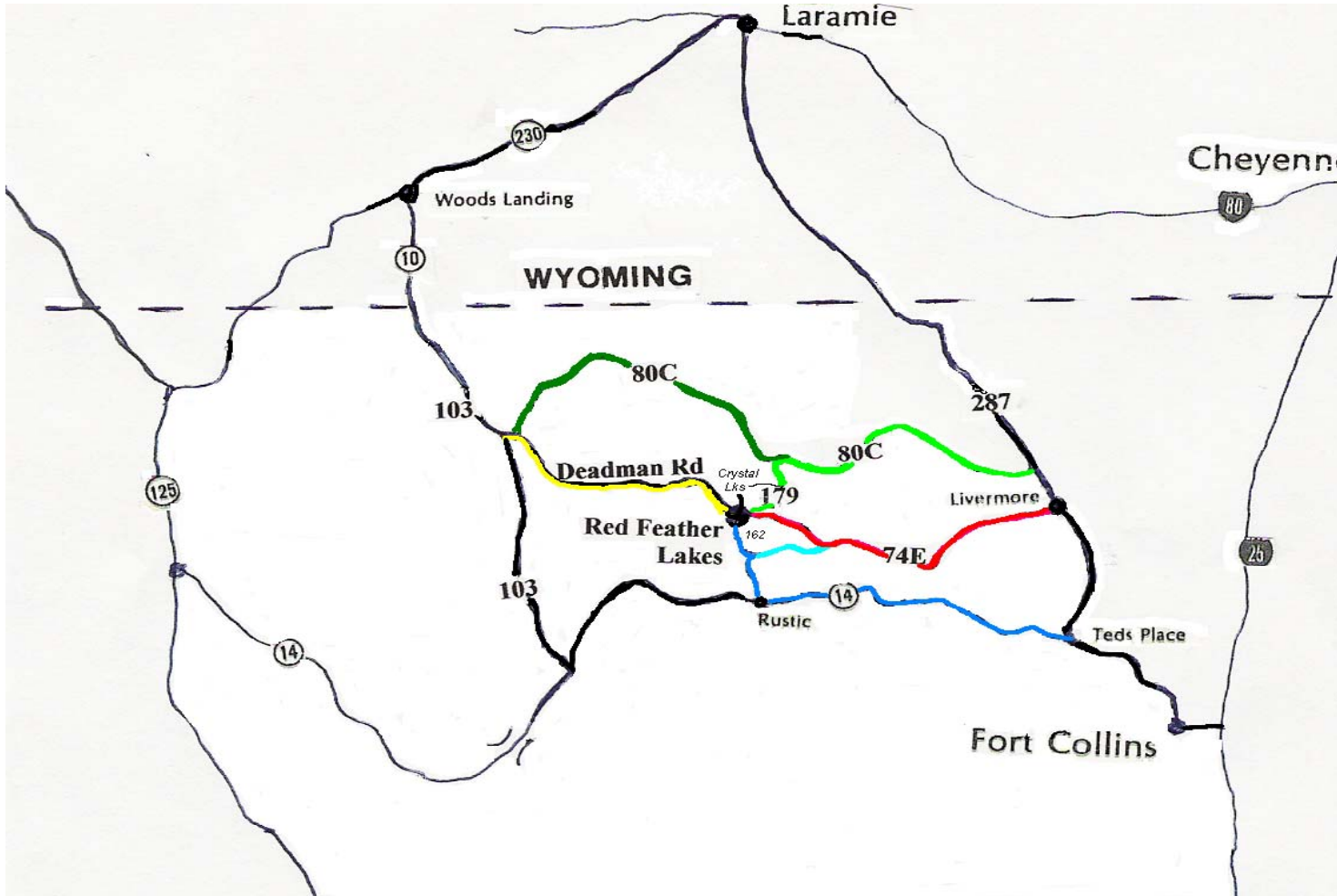
FEMA—Northern Colorado Natural Hazard Mitigation Plan (2004)

## Appendix B

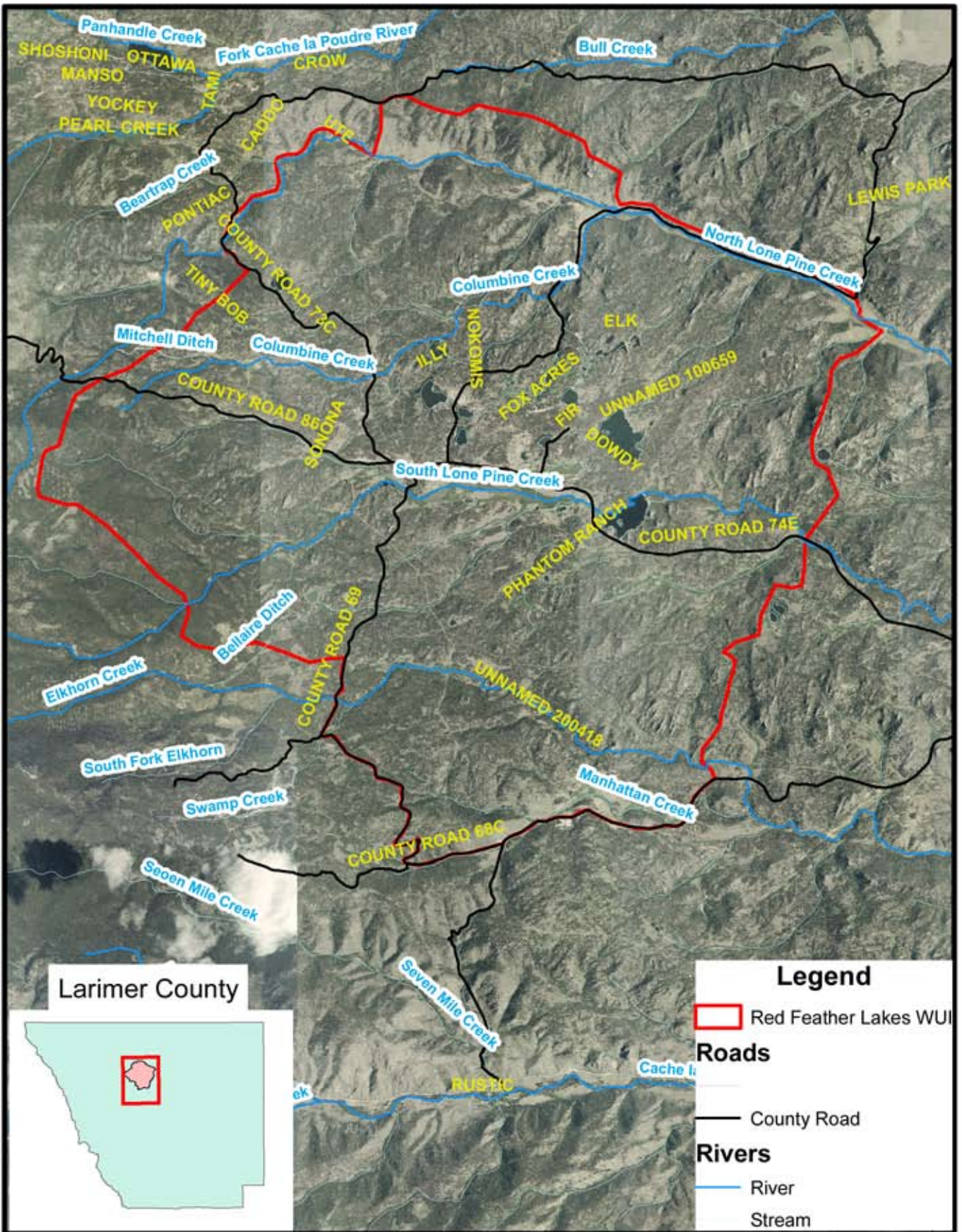
### **Red Feather Lakes Community Wildfire Protection Plan Fuel Reduction Priorities**

1. Establish & maintain a fire break of at least 1500 ft of mitigated forest on the West side of Creedmore Lakes Rd starting at the intersection of 74E extending North to the Fire District boundary.
2. Fuel reduction in Section 32 south of CR 169 (Deadman Rd) to protect evacuation check point area & the South & West Evacuation routes.
3. Creation of defensible space surrounding all private residences in the Red Feather Lakes Fire Protection District.
4. Fuel reduction in Section 21 North & East of Nokomis Lake to protect Northern evacuation route & South Nokomis Lake Subdivision.
5. Complimentary treatments on any nearby National Forest lands.

Appendix C  
**Red Feather Lakes  
Main Evacuation Routes**



# Red Feather Lakes CWPP



0 1 2 4 6 8 Miles