

North Routt Fire Protection District

Community Wildfire Protection Plan

Clark, CO

Original: May 2007

**Prepared By:
Tara Mehall
Colorado State Forest Service**

The following members mutually agree with the contents of this North Routt Fire Protection District Community Wildfire Protection Plan (CWPP):

/s/ Jamie Kingsbury

Jamie Kingsbury
District Ranger, Hahn's Peak/Bears Ears Ranger District
Medicine Bow – Routt National forest

July 20, 2007

Date

/s/ John Twitchell

John Twitchell
District Forester, Colorado State Forest Service

July 17, 2007

Date

/s/ John Husband

John Husband
Field Manager, Little Snake Field Office, Bureau of Land
Management

July 20, 2007

Date

/s/ Bob Reilley

Bob Reilley
Chief, North Routt Fire Protection District

July 19, 2007

Date

This plan has been reviewed by the Routt County Board of County Commissioners and found to meet the criteria for Community Wildfire Protection Plans (CWPPs) set forth by the Colorado State Forest Service.

/s/ Nancy J. Stahoviak

Nancy J. Stahoviak
Chairperson, Routt County Board of County
Commissioners

July 24, 2007

Date

/s/ Chuck Vale

Chuck Vale
Director, Routt County Office of Emergency
Management

July 24, 2007

Date

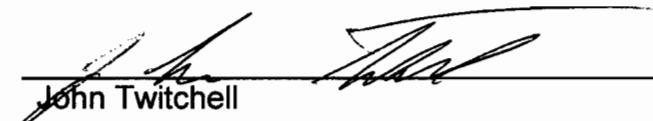
The following members mutually agree with the contents of this North Routt Fire Protection District Community Wildfire Protection Plan (CWPP):



Jamie Kingsbury
District Ranger, Hahn's Peak/Bears Ears Ranger District
Medicine Bow – Routt National forest

7/20/07

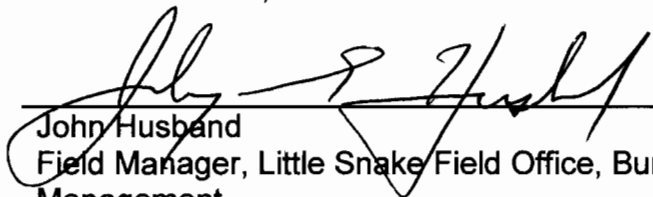
Date



John Twitchell
District Forester, Colorado State Forest Service

7/17/07

Date



John Husband
Field Manager, Little Snake Field Office, Bureau of Land
Management

7/20/07

Date



Bob Reilley
Chief, North Routt Fire Protection District

7/19/07

Date

This plan has been reviewed by the Routt County Board of County Commissioners and found to meet the criteria for Community Wildfire Protection Plans (CWPPs) set forth by the Colorado State Forest Service.

Nancy J. Stahoviak
Nancy J. Stahoviak
Chairperson, Routt County Board of County
Commissioners

July 24, 2007
Date

Chuck Vale
Chuck Vale
Director, Routt County Office of Emergency
Management

7/24/07
Date

TABLE OF CONTENTS

INTRODUCTION	1
OBJECTIVES OF THE NORTH ROUTT FIRE PROTECTION DISTRICT CWPP	2
DEVELOPMENT OF THE PLAN	3
Step 1 – Decision Makers Invited	3
Step 2 – Federal Agencies Involved	3
Step 3A – State and Local Agencies Involved	4
Step 3B – Interested Parties Engaged	5
Step 4 – Community Base Map Established	6
Step 5 – Community Risk Assessment	9
Fuel Hazards and Risk of Wildfire Occurrence	9
Homes and Businesses at Risk	9
Historical Values at Risk	12
Other Community Values at Risk	12
Local Preparedness and Firefighting Capability	13
Step 6 – Community Fire Hazard Reduction Priorities and Recommendations	15
Fuel Treatment Projects	15
Projects to Reduce Structural Ignitability	17
Emergency Preparedness	18
Step 7 – Action Plan and Assessment Strategy	23
Step 8 – Finalizing the Community Wildfire Protection Plan	24
APPENDICES	
Map – Mountain Pine Beetle – Northern Colorado Infestation in Lodgepole Pine 2001 – 2006	26

Map – Mountain Pine Beetle – Routt County Infestation in Lodgepole Pine 2006	27
Map – Routt County Fire Hazard Map	28
Map – Blowdown on Hahns Peak / Bears Ears Ranger District – Medicine Bow – Routt National Forest	29
Resource Materials Used	30
North Routt Area CWPP Organizational Meeting – September 19, 2006 – Participation List	31
North Routt Area CWPP Community Base Map Established – November 16, 2006 – Participation List	32
North Routt Area CWPP Risk Assessment – January 11, 2007 – Participation List	33
North Routt Area CWPP Priorities and Recommendations – February 5, 2007 – Participation List	34
North Routt Area CWPP Draft Review – April 2, 2007 – Participation List	35

INTRODUCTION

Members of the North Routt community, in consultation with local, state and federal agencies and other interested parties, have collaboratively developed the North Routt Fire Protection District (NRFPD) Community Wildfire Protection Plan (CWPP). This CWPP was created according to the guidelines of *Preparing a Community Wildfire Protection Plan, A Handbook for Wildland-Urban Interface Communities*, March 2004, Communities Committee, National Association of Counties, National Association of State Foresters, Society of American Foresters, Western Governors' Association. The handbook was designed to lead the community through a process that includes eight (8) steps to completion of a CWPP. Wildland Urban Interface (WUI) is defined as the line, area, or zone where structures and other human development meet or intermingle with undeveloped wildland or vegetative fuels. Several public meetings were held to guide the community through the eight steps. Debbie Alpe, Jackson County Extension Agent, Colorado State University Cooperative Extension facilitated the CWPP meetings. Technical assistance was provided by US Forest Service Geographic Information Systems (GIS) Department. The *Routt County, Colorado Fire Management Plan* was completed in 2003. The North Routt Fire Protection District CWPP supplements and enhances the information presented in these county documents. All resource materials used are listed in the Appendix.

The Healthy Forest Restoration Act (HFRA) passed by congress on November 21, 2003 directs the federal agencies to collaborate with communities in developing hazardous fuel reduction projects, and in the prioritization of treatment areas as defined by a community's CWPP. It identifies strategies for reducing wildfire fuels while improving forest health, supporting local industry and economy, and improving fire fighting response capabilities.

The August 17, 2001 Federal Register (Volume 66, No. 160) lists "Communities in the vicinity of Federal lands at risk from wildfire." http://frwebgate.access.gpo.gov/cgi-bin/getdoc.cgi?dbname=2001_register&docid=01-20592-filed North Routt, Colorado is included in this list on page 43392.

The Routt County, Colorado Fire Management Plan also identifies critical wildland urban interface (WUI) areas within the North Routt Fire Protection District. This CWPP ties to both in helping to identify a plan of action to reduce the risk to the community from wildland fire.

Lettered items in this plan appearing where lettered lists occur (objectives, strategies, risks, etc.) imply no particular order of priority unless otherwise stated.

OBJECTIVES FOR THE NORTH ROUTT FIRE PROTECTION DISTRICT CWPP

- Engage in comprehensive forest planning and prioritization.
- Provide a mechanism for federal agencies to give meaningful consideration to community priorities.
- Facilitate open community discussion regarding management options.
- Provide maximum flexibility for communities to determine the substance and detail of their plans.
- Merge the goals and objectives of the landowners with the needs and expectations of the community regarding fire risk reduction.
- Coordinate fire protection strategies across property boundaries.
- Coordinate the grant funding and federal program budgets to achieve the most effective results with limited funding.

DEVELOPMENT OF THE PLAN

The Community Wildfire Protection Plans Guidelines for Implementation August, 2005 was provided by Colorado State Forest Service (CSFS), specifically outlines eight steps community members should take to complete a viable CWPP. The North Routt community elected to utilize this eight step approach to guide their CWPP process. By following this facilitated approach, the community and agency partners engaged in focused discussion related to all critical CWPP topics and succeeded in developing a plan that genuinely reflects the concerns and recommendations of the North Routt Fire Protection District. The entire collaboration began in the summer of 2006 when the North Routt Fire Chief and Board engaged the Colorado State Forest Service and US Forest Service involvement to address all the Homeowners Association annual meetings in North Routt. The intent of these meetings was to involve and encourage the Homeowners Associations in the Community Wildfire Protection Plan process. The (8) eight steps to completion are outlined in the following sections.

STEP 1 – DECISION MAKERS INVITED

The decision makers invited for this CWPP are listed below. These officials were notified on September 7, 2006 and invited to participate in the development of this plan.

- Local Government: Routt County, Colorado Board of County Commissioners through the Routt County Emergency Manager – Chuck Vale
- North Routt Fire and Rescue Chief: Bob Reilley
- Colorado State Forest Service District Forester – John Twitchell

STEP 2 – FEDERAL AGENCIES INVOLVED

The representatives of the federal agencies managing land in the vicinity of the North Routt Fire Protection District Wildland Urban Interface are listed below. Most of these people attended a widely advertised initial community meeting inclusive of all interested landowners, businesses, and agency people in Routt County, Colorado. All those listed were invited to attend on September 7, 2006. This meeting was held the evening of Tuesday, September 19, 2006 at the North Routt Fire Protection District Station II. The purpose of the meeting was to provide an overview of the CWPP process and to encourage residents of Routt County, Colorado to work with key agency representatives to initiate completion of their individual community CWPPs. Federal agency representatives initially invited and subsequently involved include the following people:

AGENCY	REPRESENTATIVE
U.S. Forest Service	Kent Foster – Central Zone Fire Management Officer
Bureau of Land Management	Lynn Barclay – Fire Mitigation Education Specialist

STEP 3A – STATE AND LOCAL AGENCIES INVOLVED

The representatives of the state/local agencies that have jurisdictional responsibilities in the vicinity of the North Routt Wildland Urban Interface area are listed below. All those listed were invited to attend on September 7, 2006. Most of these people attended the meeting described above held the evening of Tuesday, September 19, 2006 at the North Routt Fire Protection District Station II.

AGENCY	REPRESENTATIVE
Colorado State Forest Service	John Twitchell – District Forester
Colorado State Forest Service	Tara Mehall – Forester
Steamboat Lake State Park	Julie Arlington – Park Manager
CSU Cooperative Extension	Debbie Alpe – Extension Agent
Routt County, Colorado Commissioner	Nancy J. Stahoviak – District 1
Routt County, Colorado Commissioner	Doug B. Monger – District 2
Routt County, Colorado Commissioner	Dan Ellison – District 3
Routt County, Colorado Office of Emergency Management	Chuck Vale – Director
North Routt Fire Protection District	Bob Reilley – Fire Chief
Routt County, Colorado Sheriff's Office	John Warner – Sheriff

STEP 3B– INTERESTED PARTIES ENGAGED

The residents from the North Routt Fire Protection District participated on the development of the CWPP are listed below. All those listed were invited to attend on September 7, 2006. Landowners participated in the process by attending one or more meetings, received meeting announcements, agendas, and notes, and/or communicated via telephone or e-mail.

NORTH ROUTT FPD CORE TEAM MEMBERS	REPRESENTATIVE
Bill Speaker	Red Creek Homeowners Association
Karen Kosakowski	Ranches at Steamboat Lake
Doug Carlson	Homeowner / Rancher
Jason & Kelly Krueger	Homeowner / Colorado Environmental Tree Service
Jim Ross	Homeowner
David Moss	North Routt FPD / Seedhouse
John Twitchell	Homeowner / Colorado State Forest Service
Jeff Finoff	Hahn's Peak Homeowner
Jim Hicks	Hahn's Peak Homeowner
Marge Eardley	Hahn's Peak Historical / Homeowner
Selina Heintz	The Home Ranch
Eric Heintz	Landowner
Charlie Cammer	Badger Meadows / Vista Verde Ranch
Bob Reilley	North Routt FPD / Captain's Cove
Paul Keller	North Routt FPD / Smith Creek
Kay & John Black	Homeowner
Larry Gully	Homeowner
Susan Marshall	Willow Creek Homeowners Association / Homeowner
Matt Blecha	Steamboat Lake State Park
Courtney Flint	University of Illinois
Michael Daab	University of Illinois
Mark Cahur	U.S. Forest Service
Jamie Kingsbury	U.S. Forest Service
Dave Hessel	Willow Creek Homeowners Association / Homeowner

STEP 4 – COMMUNITY BASE MAP ESTABLISHED

After considering the location of the inhabited areas, the critical human infrastructure and the risk of wildfire, the North Routt Fire Protection District community identified a base map representing a Wildland Urban Interface (WUI) zone approximately 305 square miles of federal, state and private lands around their community assets. The North Routt Fire Protection District encompasses an area of approximately 441 square miles bisected by CR 129 between mile marker 7 and 30. The North Routt Fire Protection District was divided into four sub areas which included Clark North (to include CR 129, 62), Clark South (to include CR 129, 56, 54, 52), Seedhouse Corridor (to include CR 64) and North of the North Routt Fire Protection District (areas north of Columbine). Natural and man-made barriers used to define the Wildland Urban Interface boundary include: The Western boundary a North/South line starting from the Northwest corner of Section 6, Township 10 North, Range 86 West, Northeast corner of section 12, Township 10 North, Range 83 West, Southeast corner of Section 10, Township 7 North, Range 83 West and ending at the Southwest corner of Section 31, Township 8 North, Range 86 West.

Hahn's Peak is a prominent topographic feature to the North, and the base of the Medicine-Bow Mountains to the East. The base map of the North Routt Fire Protection District Wildland Urban Interface and adjacent landscapes of interest as well as a detailed map is included on the following pages. The boundaries of the North Routt Fire Protection District Wildland Urban Interface map include the following values at risk. Please see appendix for the following maps:

- Routt Divide Blowdown 1997
- Mountain Pine Beetle-Northern Colorado Infestation in Lodgepole Pine 2001-2006
- Mountain Pine Beetle-Routt County Infestation in Lodgepole Pine 2006
- County Fire Hazard Map

Inhabited areas at potential risk to wildland fire:

Clark – North, Clark – South, & Seedhouse

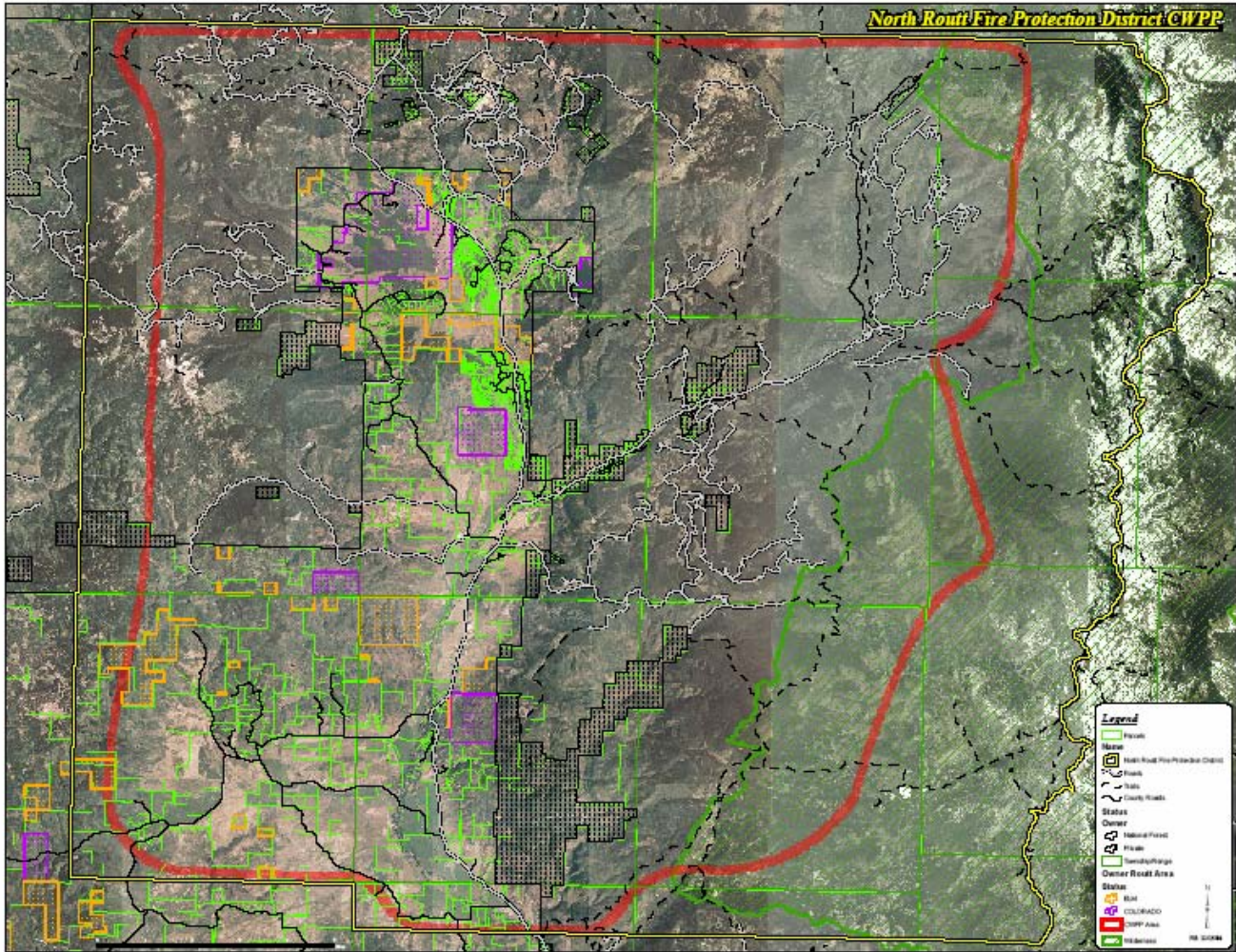
All subdivisions that border Federal & State lands are at risk.

- Steamboat Lake State Park
- Pearl Lake State Park
- Pearl Lake Subdivision
- Badger Meadows
- Aspen Heights
- Hahn's Peak
- Hahn's Peak Village
- Columbine

- The Ranches at Steamboat Lake
- Dutch Creek
- Captains Cove
- Red Creek
- Murphy Larson
- Willow Creek/Steamboat Lake Subdivision
- Moonhill
- Schools (Moonhill, North Routt Charter, North Routt Preschool)
- Public lands adjacent to private
- Campground facilities
- Marina @ Steamboat Lake State Park
- Columbine Cabins
- Clark Store
- Hahn's Peak Inn & Cafe
- Vista Verde
- Steamboat Lake Outfitters
- Elk River Guest Ranch
- Glen Eden
- Elk Ridge home sites
- Seedhouse Ranch
- Home Ranch
- High Mountain Snowmobiles
- Del's Triangle
- Dispersed private properties with/without cabins, homes and other structures

Areas containing critical human infrastructure and values include but are not limited to: escape routes, watersheds and municipal water supplies, viewsheds and power or communication structures. These include:

- Clark North (to include CR 129, 62)
- Clark South (to include CR 129, 56, 54, 52)
- Seedhouse Corridor (to include CR 64)
- North of the North Routt Fire Protection District (areas north of Columbine).
- US Forest Service Roads
- Steamboat Lake Water & Sanitation District Water Treatment Plant
- Communication Sites (Sand Mountain, Moonhill & Farwell)
- Yampa Valley Electric Substation West of Clark



STEP 5 – COMMUNITY RISK ASSESSMENT

Inserted in this section is the North Routt Fire Protection District CWPP Risk Assessment completed during a community meeting Thursday, January 11, 2007 attended by 13 residents (listed in Appendix).

Community protection is the responsibility of everyone involved. CWPPs will facilitate agency decision-making and prioritization of projects. Fire can come from within or without the North Routt Fire Protection District Wildland Urban Interface. To follow are some of the hazards and values at risk identified by the community.

Fuel Hazards and Risk of Wildfire Occurrence

- Mountain pine beetle and spruce bark beetle activity across the landscape and within the Wildland Urban Interface boundary is resulting in a dead and dying conifer forest. This significant mortality is increasing hazardous fuel loading on private and public lands. These increases are both short and long term, unless treated. If left untreated, this increase of hazardous fuels will increase the risk of wildfire within the Wildland Urban Interface.
- In addition, area forest health is further negatively impacted by mistletoe infestation as well as the extended drought conditions.
- Prevailing winds are from the west and southwest. The forests south and west of the North Routt Fire Protection District Wildland Urban Interface are currently classified as high risk fire areas.
- In a lodgepole forest, it is reasonable to expect that a fire will ultimately happen. It is difficult and usually impossible to control a crown fire. A wildland fire must be able to transition from crown fire to a ground fire before control can occur.
- Risks of wildfire can also include humans starting fires involving recreation, accidental, burning, etc.

Homes and Businesses at Risk

Homes and Businesses

- Homes in the Wildland Urban Interface include Pearl Lake Subdivision, Badger Meadows, Aspen Heights, Hahn's Peak, Columbine, and The Ranches at Steamboat Lake, Dutch Creek, Captains Cove, Red Creek, Moonhill, Murphy Larson, Elk Ranchings home sites, and Willow Creek Subdivision / Steamboat Lake Subdivision.

- Businesses in the Wildland Urban Interface include Vista Verde, Steamboat Lake Outfitters, Dutch Creek, Elk River Guest Ranch, Glen Eden, Columbine Cabins, Alpaca, Llama, Elk Ranchings, Marina at Steamboat Lake State Park, Home Ranch, Seedhouse Ranch High Mountain Snowmobiles, Guiding & Outfitting, Del's Triangle, Clark Store, Hahn's Peak Inn & Café, Working & Historic Ranches, Trades/Heavy Equipment and Location neutral home-based businesses.

Roads, Driveways and Structures

- Roads signs are present in most outlying areas of the North Routt Fire Protection District Wildland Urban Interface, including county, state and US Forest Service roads.
- Most roads and driveways are gravel and/or dirt. CR 129 is paved; Seedhouse is 50% paved/ 50% gravel.
- Majority of roads will support 2 lanes of traffic for pick-up's and emergency vehicles. CR 62 is 2 lanes; most of the roads are 16 feet or wider.
- Few loop roads exist in the North Routt Fire Protection District Wildland Urban Interface. Most of the roads through out North Routt are dead end roads. Most roads do not have adequate turnaround space for emergency equipment.
- The presence of snow and mud limit seasonal access to many roads and driveways in the Wildland Urban Interface.
- Few driveways meet width and height clearance and road grades are not adequate for emergency equipment.
- Some individual homeowners have posted their name & address at the end of their driveways. This is important.
- Many homes and other structures within the Wildland Urban Interface have fire safe roofing as opposed to wood shake.
- Most homes are constructed of wood products and have attached wooden decks or porches.
- Some homes have defensible space around them.

- Some, but definitely not all, houses and other structures are visible from the main roads. Visibility from the road allows firefighters in emergency situations to make decisions regarding defensibility, fire structures as well as consider safety factors for firefighters.

Bridges, Cattle Guards, Culverts, and Gates

- Most bridges, gates, cattle guards, and culverts that are on Routt County Roads and have been engineered by the Routt County Road and Bridge Department will support emergency equipment.
- Some gates are locked, but most are accessible.

Utilities

- Some land line telephone service lines are above & below ground.
- Limited cell phone coverage can be found in the North Routt Fire Protection District.
- Few electrical lines are found above ground and some are below ground.
- Most propane tanks are above ground and nearly all are placed a safe distance from structures. Few underground propane tanks are marked.
- There are no natural gas lines in the North Routt Fire Protection District Wildland Urban Interface.

Water

- Most homes have wells as a primary water source.
- Some subdivisions such as Murphy Larson and Willow Creek are using central water systems.
- Few houses have a cistern.
- There are some livestock and wildlife ponds present in the Wildland Urban Interface.
- Steamboat Lake Water Sanitation District Water Treatment Plant, Steamboat Lake State Park and Pearl Lake State Park are key values of the Wildland Urban Interface.

Historical Values at Risk

- Hahn's Peak Village: Historic District
- Moonhill School House: National Register of Historic Places
- Hahn's Peak School House: National Register of Historic Places
- Clark School House District: Local Routt County Register
- Seedhouse Guard Station: National Register of Historic Places & Local Routt County Register
- Summit Creek Guard Station: National Register of Historic Places & Local Routt County Register
- Hahn's Peak Lookout: National Register of Historic Places
- Columbine Mining Camp: National Register of Historic Places
- Patty's Cabin: is unevaluated per the National Register of Historic Places
- The Master Key Mine: is unevaluated per the National Register of Historic Places
- Wither Cabin (in Hahn's Peak Village): Local Routt County Register
- Fetcher Barn: Local Routt County Register

Other Community Values at Risk

- North Routt Charter School
- North Routt Preschool
- Clark Store
- Viewsheds
- Scenery – Hahn's Peak 360 degrees
- Steamboat Lake State Park/ Pearl Lake State Park
- Trails/Trailheads
- Watersheds/Fisheries/Recreation
- Communication Towers (Sand Mountain, Moonhill & Farwell)
- Campgrounds
- Agricultural Improvements/Heritage
- Yampa Valley Electric Substation West of Clark
- North Routt Fire Protection District Station I & II

Local Preparedness and Firefighting Capability

Points Considered

- Generally speaking, the North Routt Fire Protection District Wildland Urban Interface has good fire fighting and emergency services capability. North Routt has a full time chief and two equipped stations and high interagency coordination.
- Designating pre-planned traffic flow evacuation routes would facilitate smoother traffic flow in an emergency. There are currently no evacuation plans known.
- Regarding communication systems, residents that have local telephone numbers listed, therefore a reverse 911 communication systems could be used to communicate a fire emergency. With cell phone use on the rise, this could be a concern for reverse 911 communication systems.
- It was noted that, in the early stages of a potential emergency fire situation, local people might organize a calling tree to keep neighbors informed of fire progress.
- Concerns were expressed by agency representatives regarding use of a neighbor to neighbor phone trees. Fire safety officials would organize and implement communication with Wildland Urban Interface residents. It was emphasized that if an evacuation order is ever made, residents must NOT stop to call neighbors.
- Alternative places to initially gather and communicate were discussed.
- The North Routt Fire Protection District Wildland Urban Interface does have some animals to consider. Individual livestock and pet owners may wish to develop evacuation plans for their animals as a supplement to their own personal evacuation plans.
- Residents with special needs must be considered including people with specific mobility issues or medical conditions that may require assistance.
- It was noted that post-trauma crisis counseling may be needed in the aftermath of a fire.

Fire Insurance Protection Ratings as rated by Insurance Services Office, Inc. (ISO) for the North Routt Fire Protection District include:

- a) **Rating #6** Willow Pass (Steamboat Lake Subdivision) homes located within 1000 ft of a pressurized hydrant
- b) **Rating #9** Homes located within five driving miles of North Routt Fire Protection District Fire Station I or II
- c) **Rating #10** Homes located outside of five driving miles of North Routt Fire Protection District Fire Station I or II

Special Citizen Requests

- All associated fire and emergency plans should be advertised as easily accessible for residents to review by placement of copies in the library, the Routt County Courthouse, fire stations, websites, state and federal forestry facilities, or other strategic community sites.
- North Routt Fire Protection District Wildland Urban Interface residents expressed concerns and the need for better fire danger and fire ban signage and placement of signage in the Wildland Urban Interface. Larger, more obvious and emphatic fire ban poster signage was requested.

STEP 6 – COMMUNITY FIRE HAZARD REDUCTION PRIORITIES AND RECOMMENDATIONS

Inserted in this section are the North Routt Fire Protection District CWPP Priorities and Recommendations endorsed by the community during a meeting Monday, February 5, 2007 attended by 13 residents (listed in Appendix).

Fuel Treatment Projects

Highest Priorities

- **Seedhouse – (US Forest Service)** The Seedhouse project includes both mechanical and prescribed fire treatments to reduce hazardous fuels. Mechanical treatments include creation of shaded fuel breaks, thinning, and slash treatments within existing timber sales. Prescribed fire will also be used to burn slash piles created by the mechanical work, and also in brush vegetation types. Subdivisions and businesses adjacent to the project area include Hinman Estates, Elk Ridge Homesites, Seedhouse Ranch, Willow Creek Ranch, Steamboat Lake Subdivision (filing 2), Mountain Leisure, Seanger Subdivision (filings 1 & 2), Elk River Guest Ranch, Vista Verde Guest Ranch, and other individual parcels in the Seedhouse corridor. Also, Forest Service infrastructure in the Seedhouse Guard Station and campground areas will be treated.

- **Larson 2 – (US Forest Service)** The purpose of Larson 2 project is to improve forest health conditions and reduce hazardous fuels in the area. Implementation of the project will include both commercial and non-commercial mechanical treatments. Where identified stands in need of treatment are of commercial value as a timber product, a commercial sale will be used. Where commercial removal is not feasible, stands will be treated to improve forest health, while removing hazardous fuels. Work may be completed by hand felling using chainsaws, or by using heavy equipment, to cut, yard and pile material for burning to be done at a later time by the Forest Service. Subdivisions and businesses adjacent to this project include Red Creek (Filings, 1 & 2), Captain's Cove, Ranches at Steamboat Lake, Whiting Subdivision, Pirate's Hideout, Steamboat Lake State Park, and several other private landowners and ranches.

- Prospector – (US Forest Service) The purpose of Prospector project is to improve forest health conditions and reduce hazardous fuels in the area. The area around Hahn’s Peak Lake campground and day use area has seen a high mortality rate in the spruce/fir forest type. Implementation of the project will include both commercial and non-commercial mechanical treatments. Where identified stands in need of treatment are of commercial value as a timber product, a commercial sale will be used. Where commercial removal is not feasible, stands will be treated to improve forest health, while removing hazardous fuels. Work may be completed by hand using chainsaws, or by using heavy equipment, to cut, yard and pile material for burning to be done at a later time by the Forest Service. This project will help protect the Hahn’s Peak Lake campground and day use area as well as historical structures on the National Forest. The Columbine area is eligible for designation as a National Historic District. Subdivisions and businesses adjacent to this project include Columbine Estates, Tanglewood Heights (filing 1 & 2), Lucky Camp, Bristol subdivision, the North Routt FPD subdivision (Station II), Columbine Cabins, and Dutch Creek Guest Ranch, as well other private lands not associated with a platted subdivision.
- Strategic fuel breaks for Homeowners Association.
- Fuel reduction on State Parks and particularly Division of Wildlife land.
- US Forest Service land adjacent to Willow Creek subdivision.
- Utilize existing roads for fuel breaks, thin adjacent.
- State, federal and private lands adjacent to Pearl Lake.
- Treat fuels near homes, promote defensible space projects. Larger forest management projects, whether commercial timber sales or fuels treatment operations, can potentially provide significant protection to communities from wildfire.
- Large scale timber management projects can make the biggest impact toward protecting a community.

Projects to Reduce Structural Ignitability

Regarding specific priorities and recommendations beyond those already described above that are in progress or upcoming, North Routt community members noted the following projects be completed in the North Routt Fire Protection District to reduce structural ignitability.

Highest Priorities

- Private landowners in the North Routt Fire Protection District Wildland Urban Interface are encouraged to complete defensible space projects and reduce other fire hazards on their personal property. This includes improving ingress and egress routes for emergency fire services as outlined in the Routt County Fire Management Plan. FireWise projects completed by individuals can lend protection to individual homes and neighborhoods as well as lessen the chances of a wildfire starting from within the Wildland Urban Interface. Many Wildland Urban Interface residents have completed FireWire projects on their property. Recognizing that people cannot be forced to complete FireWise projects on their property, all North Routt Fire Protection District Wildland Urban Interface landowners are encouraged to create defensible space and reduce other fire hazards on their personal property.
- Facilitate North Routt Fire Protection District evaluating defensibility of each property in North Routt Fire Protection District Wildland Urban Interface. Find funds to support this critical activity.
- Standardize and prominently display address nomenclature for all homes and structures in the North Routt Fire Protection District Wildland Urban Interface.
- *Other Priorities*
- Utilize county and Forest Service roads where feasible as anchors for fuel breaks and fire lines.
- Explore and promote market opportunities for woody materials removed in conjunction with fuel treatments.
- Encourage market and slash disposal for private landowners.
- Establish proper right-of-way clearance for all power lines in the area.
- Continue to educate the community regarding FireWise concepts.

- Explore becoming a FireWise community.
- Evaluate existing Wildland Urban Interface codes for rural communities.
- Forest management in residential areas including private landowners and homeowners associations are encouraged to develop forest management plans.

Emergency Preparedness

Highest Priorities

- Encourage residents to put together individual evacuation plans including addressing any existing pet and livestock issues. www.readycolorado.gov
- Ensure with the appropriate agencies, that emergency notification procedures and evacuation plans are in place and clearly understood by residents.
- Identify the costs and feasibility of installing dry hydrants in strategic areas.
- Annual review of CWPP.

Other Priorities

- Support the North Routt Fire Fighters of the North Routt Fire Protection District and encourage residents to become volunteers.
- Assist the fire department by following FireWise homeowner guidelines and create defensible space around homes and structures.
- Identify a pre-established evacuation destination.
- Identify community members to serve as key communicators in the event of a fire requiring evacuation to help monitor a check off list of residents as they are leave.
- Executive summary and website.
- Identify residents in Wildland Urban Interface that may have mobility issues. Inform North Routt Fire Protection District regarding residents who have mobility issues so that they can include that information in the books they carry in the trucks.
- State Parks and US Forest Service will be responsible for communication with campground, forest and park visitors.

- Create and disseminate a map highlighting alternate evacuation routes.
- North Routt community members should discuss development of emergency preparedness/evacuation plans.
- Identify how to deal with livestock evacuation if owners are absent and a fire occurs.
- In the event of a fire and an evacuation, residents should use the route that is the shortest distance between their property and an exit road. They should then stay to the right, get out to a county road or highway, keep moving and do not stop as stopping to talk may cause congestion and impede evacuation.
- North Routt Fire Protection District residents request all roads are properly maintained with signage.
- The tables below outline North Routt Fire Protection District Wildland Urban Interface projects, responsible parties and level of priority for implementation.

FUEL TREATMENT PROJECTS

PROJECT OR ACTIVITY	RESPONSIBLE PARTY	PRIORITY LEVEL
Seedhouse (In progress)	US Forest Service	High
Larson 2 – scheduled for 2008	US Forest Service	High
Big Creek Ridge	US Forest Service	Other
Prospector	US Forest Service	High
Develop fuel break system for Homeowners Association	Homeowners Association	High
Fuel Reduction on State Parks and particularly Division of Wildlife land	Division of Wildlife, State Parks	High
Review for treatment on all state lands within the Wildland Urban Interface	Colorado State Forest Service	Other
US Forest Service land adjacent to Willow Creek subdivision	US Forest Service	High
Utilize existing roads for fuel breaks, thin adjacent	Routt County, Colorado	Other
State, federal and private lands adjacent to Pearl	Colorado State Forest Service, US Forest Service, Division of Wildlife, Bureau of Land Management, State Parks and Private landowners	High
Treat fuels near homes, firewise	Private landowners	High

PROJECTS TO REDUCE STRUCTURAL IGNITABILITY

PROJECT OR ACTIVITY	RESPONSIBLE PARTY	PRIORITY LEVEL
Create defensible space and reduce fire hazards on private property	Colorado State Forest Service, North Routt Fire Protection District and Private landowners	High
Evaluate defensibility of private property	Colorado State Forest Service, North Routt Fire Protection District and Private landowners	High
Post standardized address signs	Private landowners, Routt County	High
Research cost and feasibility of dry hydrant placement	Colorado State Forest Service, North Routt Fire Protection District	Other
Ensure proper handling of power and electric line slash generated during hazard reduction projects	Colorado State Forest Service, North Routt Fire Protection District residents	Other
Establish proper right-of-way clearance for all power lines in the area.	Yampa Valley Electrical Association	Other
Educate community about Fire Wise concepts	Colorado State Forest Service, North Routt Fire Protection District, CSU Extension	Other
Evaluate existing Wildland Urban Interface codes for rural communities	North Routt Fire Protection District	Other

PROJECTS TO INCREASE EMERGENCY PREPAREDNESS

PROJECT OR ACTIVITY	RESPONSIBLE PARTY	PRIORITY LEVEL
Post standardized address signs	Private landowners, Routt County	High
Develop North Routt Area individual and community evacuation plans. www.readycolorado.gov	Landowners, Colorado State Forest Service, North Routt Fire Protection District, Routt County,	High
Recruit North Routt Area residents to become members of North Routt Fire Protection District	North Routt Area residents and North Routt Fire Protection District	Other
Identify community members to serve as communication liaisons in the event of evacuation	North Routt Area residents	Other
Identify residents with mobility issues and inform NR Fire and Rescue	North Routt Area residents	Other
Properly maintain road signage	Routt County, US Forest Service, Bureau of Land Management and Colorado State Forest Service	Other
Annual review of CWPP	North Routt Area residents, North Routt Fire Protection District, Colorado State Forest Service, US Forest Service, State Parks, Division of Wildlife, Bureau of Land Management	Other

STEP 7 – ACTION PLAN AND ASSESSMENT STRATEGY

- The North Routt Fire Protection District community recommends all above stated priorities be considered for projects to accomplish in this Wildland Urban Interface. All projects listed are considered valuable and important to the residents of this Wildland Urban Interface. Private residents, Routt County, North Routt Fire Protection District, Colorado State Forest Service, Colorado Division of Parks and Outdoor Recreation, the Bureau of Land Management, Division of Wildlife and the US Forest Service will be responsible for initiating projects based on land ownership and/or jurisdiction.
- The community recognizes that all private individuals, Routt County, and partnering agencies experience budget constraints. However, the projects listed in this CWPP are considered critical and important in the effort to protect life and property in the North Routt Fire Protection District and therefore deserve immediate attention.
- The North Routt Fire Protection District community recommends that projects listed above as *Highest Priorities* be initiated by 2007-2008.
- Projects listed above as *Other Priorities* are projects that may be accomplished immediately or may require further community and/or agency collaboration and action prior to implementation.

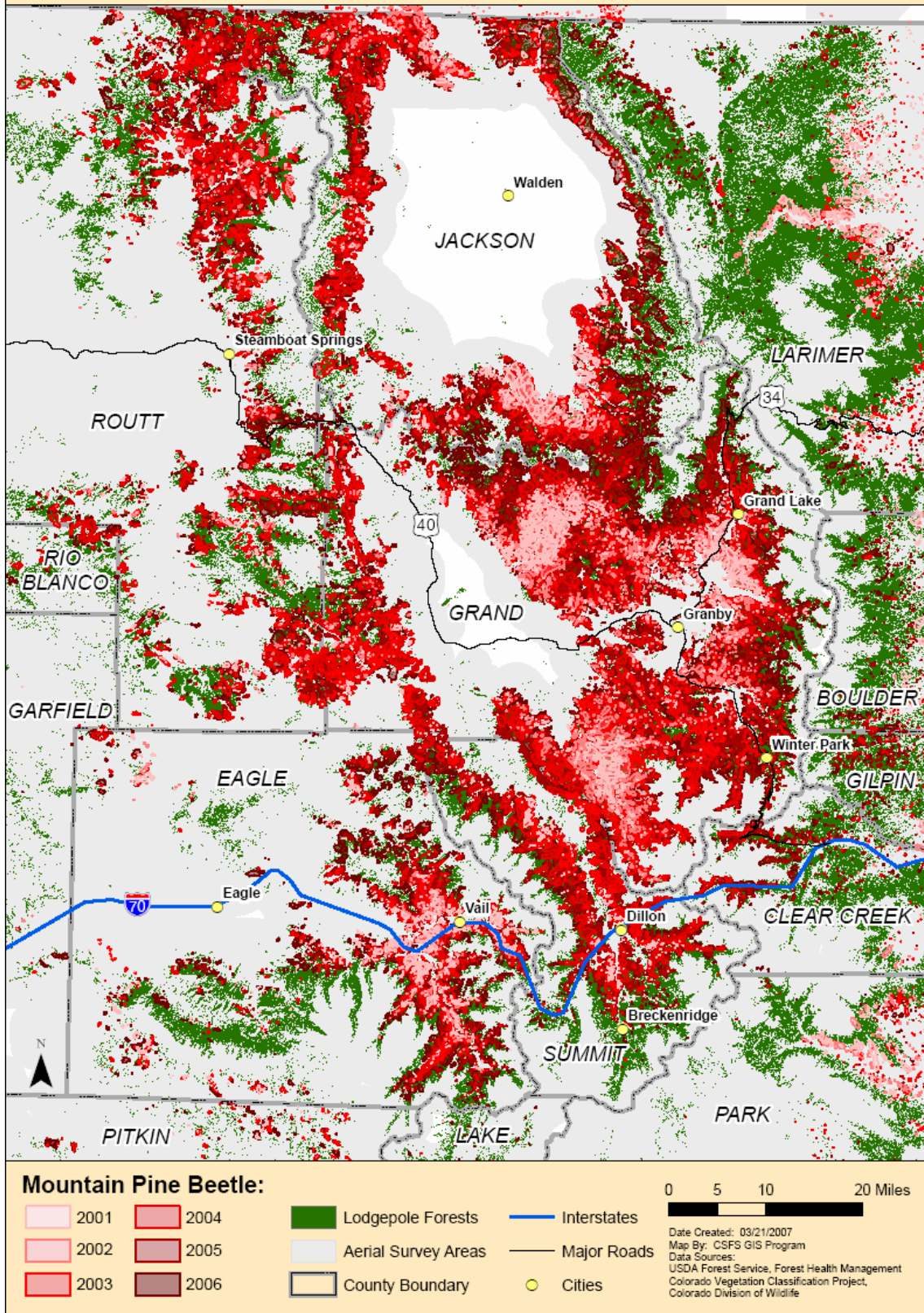
STEP 8 – FINALIZING THE COMMUNITY WILDFIRE PROTECTION PLAN

The North Routt Fire Protection District Community Wildfire Protection Plan:

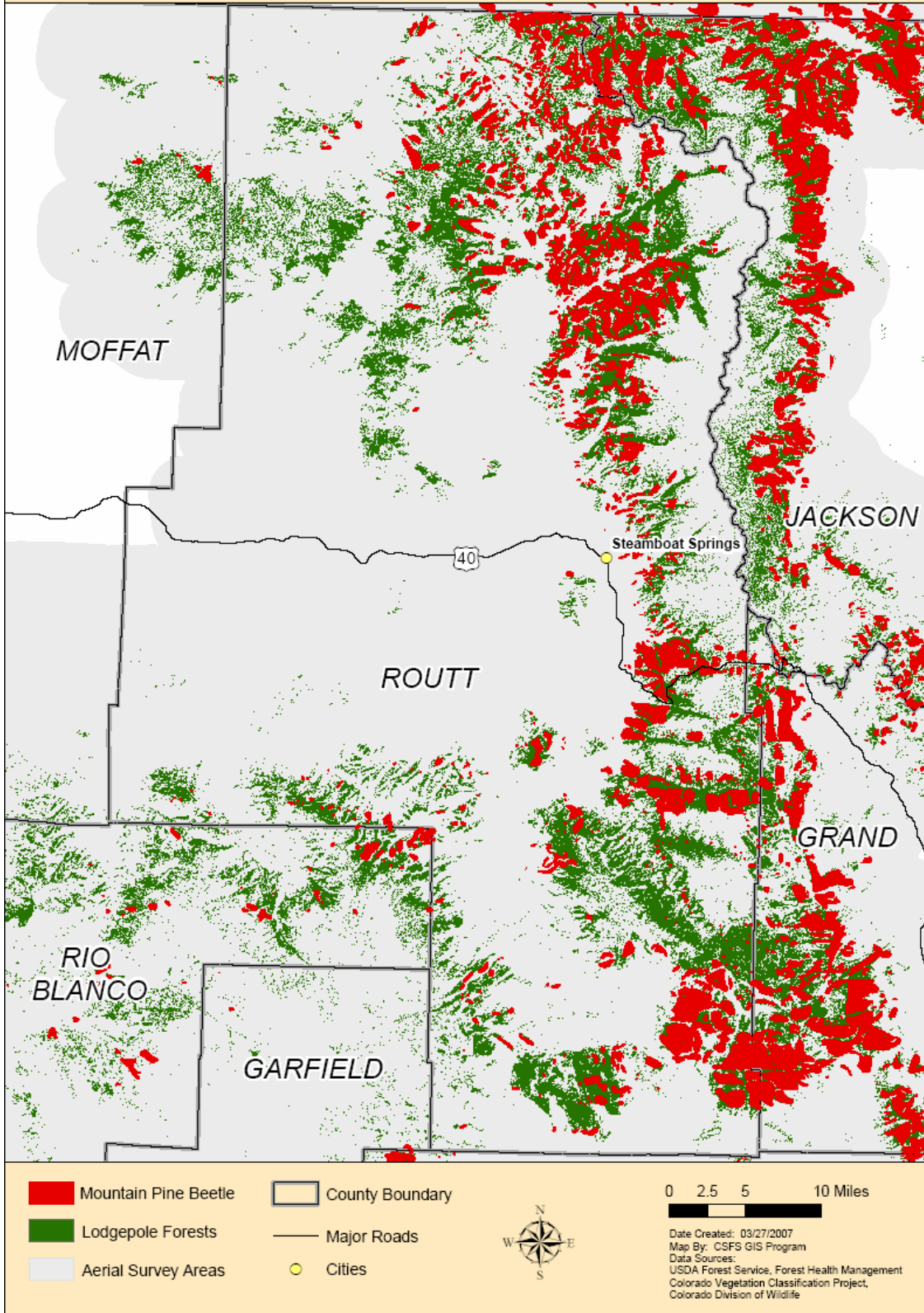
- Was collaboratively developed. Interested parties and federal land management agencies managing land in the vicinity of North Routt have been invited to participate and provide input to the process by mail, e-mail, telephone, and face to face during CWPP meetings.
- Identified and prioritized areas for hazardous fuel reduction treatments and recommends the types and methods of treatment that will protect the North Routt Fire Protection District.
- Recommends measures to reduce the ignitability of structures throughout the area addressed by the plan.
- The North Routt Fire Protection District community will review and assess progress on recommended projects and update their CWPP during their annual meeting. All partnering agencies are strongly encouraged to participate by providing updates, including a list of accomplishments, during this annual meeting. Changes deemed significant by the community any warrant changes to the CWPP.

APPENDICES

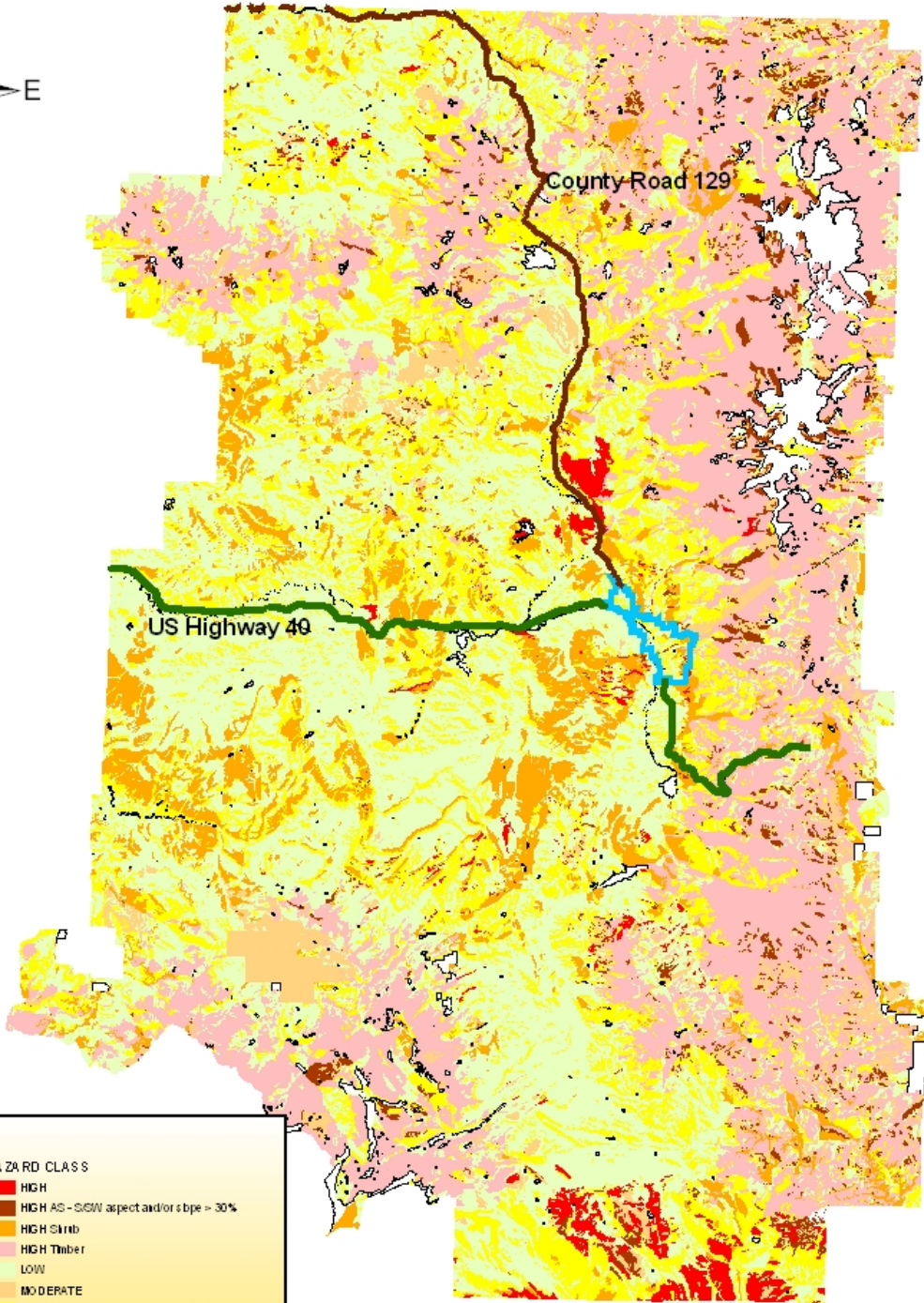
Mountain Pine Beetle - Northern Colorado Infestation in Lodgepole Pine 2001 - 2006



Mountain Pine Beetle - Routt County Infestation in Lodgepole Pine 2006

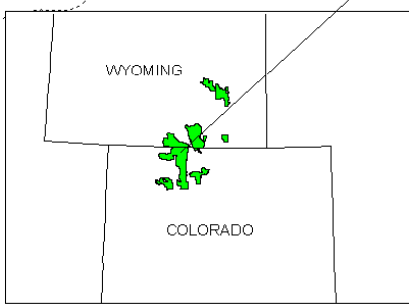
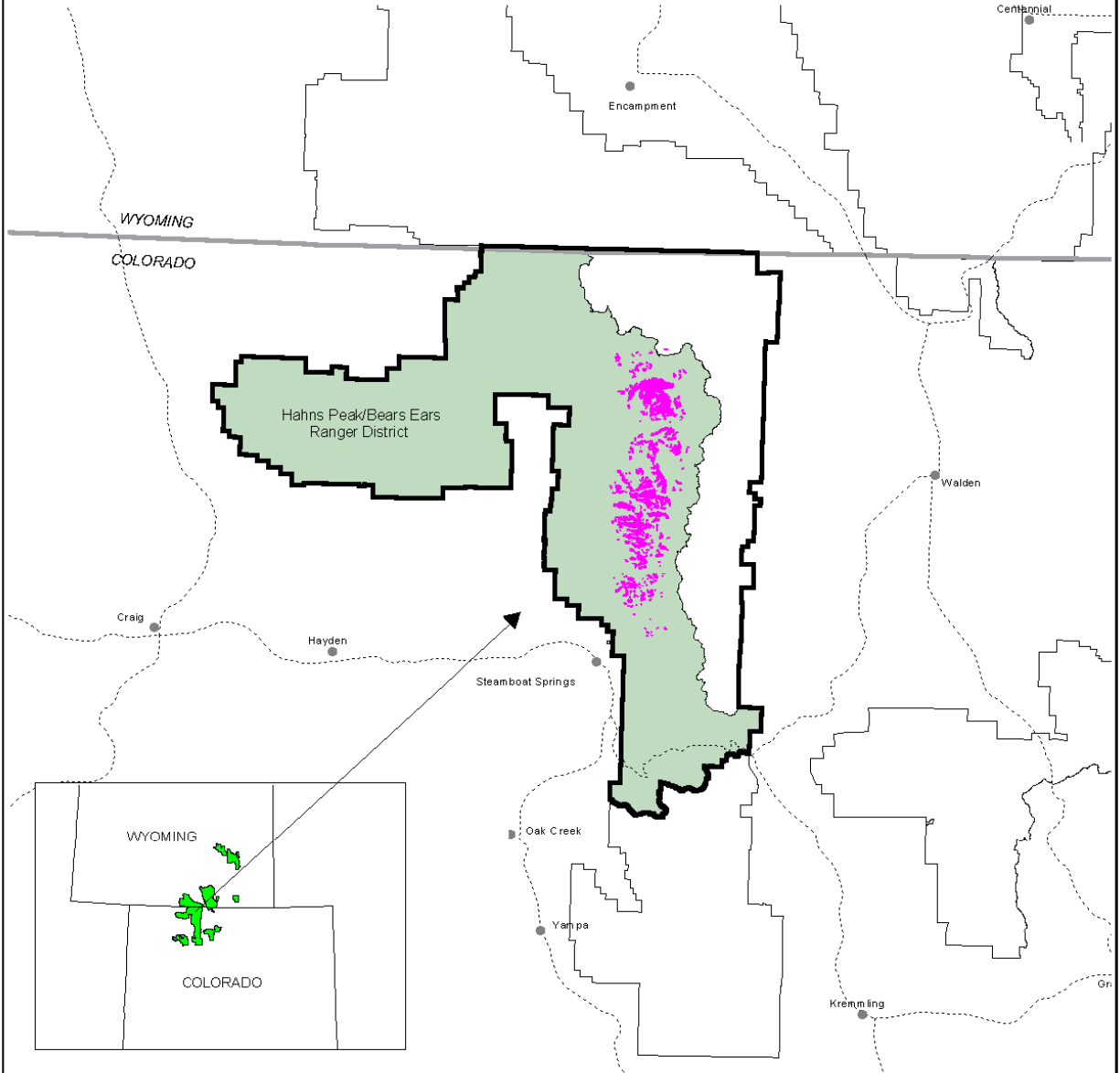


Routt County Fire Hazard Map



Legend	
roads	HAZARD CLASS
ROAD_NAME	HIGH
County Road 129	HIGH AS-S/SW aspect and/or slope > 30%
US Highway 49	HIGH Slope
CITY	HIGH Timber
Steamboat Springs	LOW
Wildfire	MODERATE
	MODERATE AS-S/SW aspect and/or slope > 30%
	NO HAZARD

Vicinity Map
 Blowdown on Hahns/Peak Bears Ears Ranger District
 Medicine Bow-Routt National Forest



- Evaluation Area
- Medicine Bow-Routt N.F. Boundary
- Hahns Peak/Bears Ears Ranger District
- Mapped Blowdown
- State Boundary
- Cities and Towns
- Major Highways



Resource Materials Used

- *Healthy Forest Restoration Act of 2003*
- *Preparing a Community Wildfire Protection Plan, A Handbook for Wildland-Urban Interface Communities*, March 2004; Communities Committee, National Association of Counties, National Association of State Foresters, Society of American Foresters, Western Governors' Association
- *Community Wildfire Protection Plans-Guidelines for Implementation*, Colorado State Forest Service, August 2005
- *Leaders Guide Supplement*, International Association of Fire Chiefs
- *Routt County, Colorado Fire Management Plan, 2003*

NORTH ROUTT AREA CWPP ORGANIZATIONAL MEETING

**September 19, 2006, North Routt Fire Protection District (NRFPD)
Station II**

PARTICIPANT LIST

Listed in order of sign up sheet:

- Bob Reilley
- Bill Speaker
- Chuck Vale
- John Twitchell
- Karen Kosakowski
- Jeff Finoff
- Jim Hicks
- Marge Eardley
- Kent Foster
- Deb Alpe

NORTH ROUTT AREA CWPP COMMUNITY BASE MAP ESTABLISHED

**November 16, 2006, North Routt Fire Protection District (NRFPD)
Station II**

PARTICIPANT LIST

Listed in order of sign up sheet:

- Kent Foster
- John Twitchell
- Tara Mehall
- Chuck Vale
- Bob Reilley
- Jeff Finoff
- Marge Eardley
- Jim Hicks
- Bill Speaker
- Karen Kosakowski
- Paul Keller
- Doug Carlson
- Kelly and Jason Krueger
- Eric Heintz
- Kay & John Black
- Larry Gully
- Jim Ross
- Susan Marshall
- David Moss
- Lynn Barclay
- Deb Alpe
- Selina Heintz
- Charlie Cammer
- Julie Arington
- Matt Blecha
- Courtney Flint
- Michael Daab

NORTH ROUTT AREA CWPP RISK ASSESSMENT

**January 11, 2007, North Routt Fire Protection District (NRFPD)
Station II**

PARTICIPANT LIST

Listed in order of sign up sheet:

- John Twitchell
- Tara Mehall
- Bob Reilley
- Bill Speaker
- Karen Kosakowski
- Doug Carlson
- Jason Krueger
- Jim Ross
- Deb Alpe
- Selina Heintz
- Charlie Cammer
- Julie Arington
- Mark Cahur
- Marge Eardley

NORTH ROUTT AREA CWPP PRIORITIES AND RECOMMENDATIONS

**February 5, 2007, North Routt Fire Protection District (NRFPD)
Station II**

PARTICIPANT LIST

Listed in order of sign up sheet:

- John Twitchell
- Bob Reilley
- Bill Speaker
- Karen Kosakowski
- Deb Alpe
- Selina Heintz
- Charlie Cammer
- Lynn Barclay
- Chuck Vale
- Jamie Kingsbury
- Dave Hessel
- Marge Eardley
- David Moss

NORTH ROUNT AREA CWPP DRAFT REVIEW

**April 2, 2007, North Routt Fire Protection District (NRFPD)
Station II**

PARTICIPANT LIST

Listed in order of sign up sheet:

- John Twitchell
- Matt Blecha
- Bob Reilley
- Eric Heintz
- Selina Heintz
- Charlie Cammer
- Chuck Vale
- Bill Speaker
- Tara Mehall
- Mark Cahur
- Kent Foster
- David Moss
- Jim Hicks
- Marge Eardley