

## Community Wildfire Protection Plan

East Portal Coalition  
(including Windcliff Estates, Thunder Mountain HOA, YMCA of the Rockies, J.T. Stonecliffs Association, Ramshorn Cabins)  
Larimer County, Colorado

4/20/06

### Introduction

This *Community Wildfire Protection Plan* (CWPP) was developed by the East Portal Coalition with guidance and support from the Estes Park Fire Department, the U.S. Forest Service – Canyon Lakes District, Larimer County, the Colorado State Forest Service – Fort Collins District, and Rocky Mountain National Park. This CWPP supplements several Larimer County documents referenced in Appendix A. Information in this plan will be provided at a level of specificity determined by the community and appropriate agencies.

The process of developing a CWPP can help a community clarify and refine its priorities for the protection of life, property, and critical infrastructure in the wildland-urban interface. It can also lead community members through valuable discussions regarding management options and implications for the surrounding watershed.

### Community / Agencies / Interested Parties Involved

Representatives involved in the development of the East Portal Coalition CWPP are included in the following table. Their name, organization, and roles and responsibilities are indicated below:

#### **CWPP Development Team**

<b>Name</b>	<b>Organization</b>	<b>Roles / Responsibilities</b>
Joe Walsh/Bud Duryea, Les Foiles, John Grasso, Fred Hagan, Charles Sullins	Windcliff Estates, Thunder Mountain HOA, YMCA of the Rockies, J.T. Stonecliffs Association, Ramshorn Cabins	Primary development of CWPP and decision making – community risk and value assessment, development of community protection priorities, and establishment of fuels treatment project areas and methods
Scott Dorman	Estes Park Fire Department	Primary development of CWPP and decision making – community risk and value assessment, development of community protection priorities, and establishment of fuels treatment project areas and methods
Wendy McCartney	Colorado State Forest Service	Facilitation of planning process and approval of CWPP process and minimum standards. Provides input and expertise on forestry, fire and fuels, and FireWise concepts.
Tony Simons	Larimer County Wildfire Safety Program	Provides input and expertise on hazard assessment, defensible space, and FireWise concepts.
Scott Sticha – Rocky Mountain National Park; Richard Edwards – USFS- Canyon Lakes District	Relevant federal land management agencies (USFS, BLM, etc.)	Provides input and expertise on federal lands forestry, fire and fuels, and FireWise concepts
None	Other organizations designated by the core team (Environmental groups, utilities, recreational groups, etc.)	Provides input and expertise. This could include community risk and value assessment, development of community protection priorities, and establishment of fuels treatment project areas and methods.

### Identification of Values at Risk

Using technology and local expertise, the East Portal Coalition has developed a base map and narrative of the community and adjacent landscapes of interest. This map will act as a visual aid from which community members can assess and make recommendations. The base map includes, at a minimum, the following:

- Inhabited areas and values at potential risk to wildland fire
- Areas containing critical human infrastructure—such as evacuation routes, municipal water supply structures, and major power or communication lines—that are at risk from wildfire
- A preliminary designation of the community's Wildland Urban Interface (WUI) zone.

Community Risk Assessment

The purpose of the community risk assessment is to help to prioritize areas for treatment and identify the highest priority uses for available financial and human resources. This section is divided into five areas of concern:

- Fuel Hazards – An evaluation of vegetation conditions within the community and on adjacent lands. Products included are:
  - Larimer County Wildfire Safety Program – Subdivision Wildfire Hazard Review
  - Larimer County Fuel Hazard Map
  
- Risk of Wildfire Occurrence – An evaluation of the probability of fire ignition within the community and surrounding lands.
  
- Risk to homes, businesses, and essential infrastructure – An evaluation of the vulnerability of structures within the community to ignition from firebrands, radiation, and convection. Also includes an evaluation of risks to essential infrastructure such as evacuation routes, water supply structures, and power and communication lines. Products may include:
  - Structure Assessment (construction materials, structure access, defensible space, etc.)
  - Infrastructure Assessment (utilities, water, community roads, power lines, etc.)
  
- Risk to Other Community Values – An evaluation of risk to other community values such as wildlife habitat, recreation and scenic areas, water supplies, and landscapes of historical, economic or cultural value.
  
- Local Preparedness and Firefighting Capability
  - Initial response to all fire, medical and associated emergencies is the responsibility of the Estes Park Fire Department. Wildland fire responsibilities of Larimer County, Colorado State Forest Service, United States Forest Service, Bureau of Land Management and the National Park Service are described in the current *Larimer County Annual Operating Plan*. All mutual aid agreements, training, equipment, and response are the responsibility of the local fire department and the agencies listed above.

Hazard Reduction Priorities

See the attached prioritized list of community needs regarding fuel reduction treatments within the WUI zone.

- Fuel reduction needs (Attach map identifying treatment types and ways to reduce structural ignitability.)
- Fire response needs

Action Plan

The East Portal Coalition has developed and attached an action plan which identifies roles and responsibilities, funding needs and timetables listed in Hazard Reduction Priorities. The core team will meet annually to evaluate progress and mutually agree on treatment priorities.

In cooperation with Larimer County, the Estes Park Fire Department, the Colorado State Forest Service – Fort Collins District, the U.S. Forest Service – Canyon Lakes District, and Rocky Mountain National Park, the East Portal Coalition supports and promotes Firewise activities as outlined in the Larimer County Fire Plan. The East Portal Coalition supports and educates its citizens in ways to reduce structure ignitability through meeting Larimer County Building Code Requirements and utilizing Colorado State Forest Service FireWise Construction Fact Sheets.

The following community representatives / agencies have reviewed and support this *Community Wildfire Protection Plan*.

\_\_\_\_\_  
East Portal Coalition (representative)

\_\_\_\_\_  
Estes Park Fire Department

\_\_\_\_\_  
Colorado State Forest Service - Fort Collins District

\_\_\_\_\_  
U.S. Forest Service - Canyon Lakes District

\_\_\_\_\_  
National Park Service – Rocky Mountain National Park

## **Appendix A**

Larimer County Fire Plan a Community Wildfire Protection Plan (Larimer County 2004)

Larimer County Wildfire Mitigation Plan (CSFS 1998)

Recommendations for Improving Wildfire Safety in Larimer County (CSFS 1997)

Larimer County Subdivision Wildfire Hazard Review (Larimer County/CSFS 2002)

Larimer County Annual Operating Plan (updated annually)

FEMA—Northern Colorado Natural Hazard Mitigation Plan (2004)

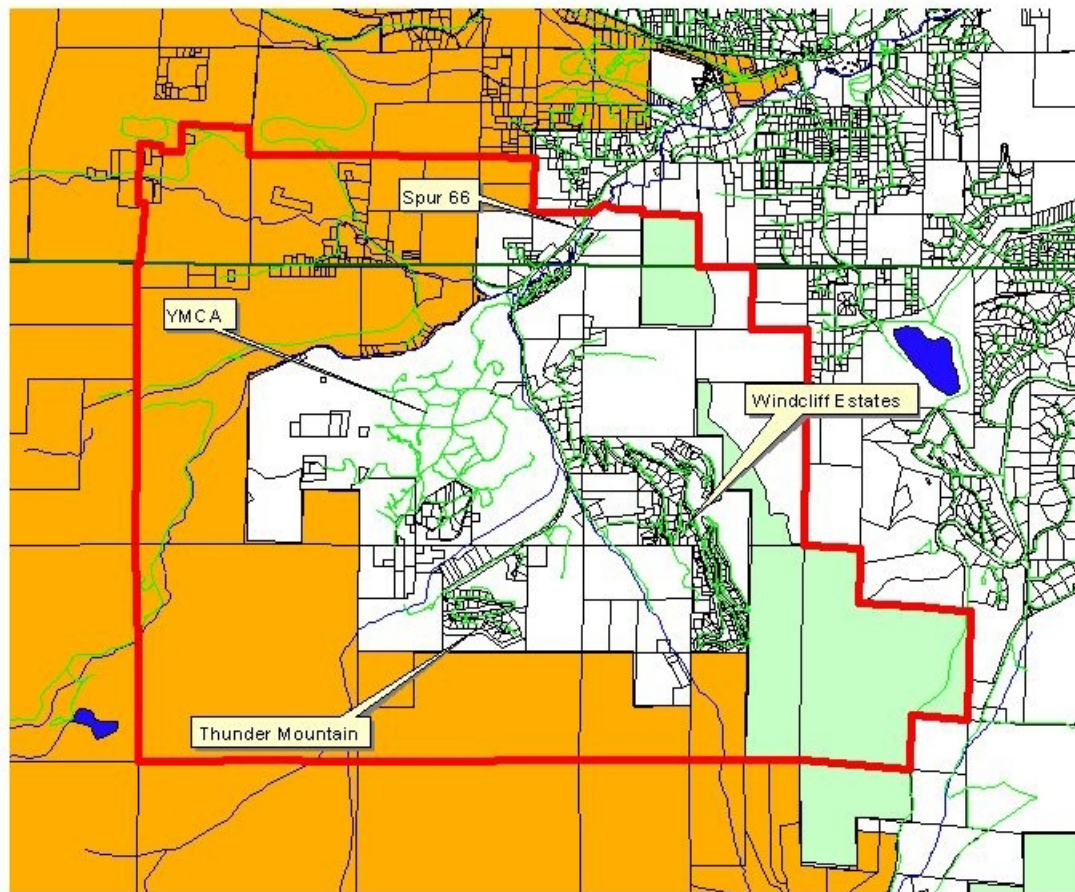
**East Portal Coalition**  
**Community Values at Risk**

- 1) Platted Property - H
    - Existing structures
    - Future structures
    - Historic structures
    - YMCA facilities
  - 2) Infrastructure - H
    - Roads and bridges
    - Power
    - Water
    - Communication
    - Bureau of Reclamation (BOR) assets
  - 3) Safety - H
    - Evacuation route
    - Safety zones
    - Emergency access and egress system
  - 4) Recreation - M
    - Facilities
    - Trails
    - Fishing
    - Campgrounds
    - Structures
  - 5) Aesthetics - L
    - View Corridor
    - Watchable wildlife
    - Wilderness areas
  - 6) Wildlife - L
    - Elk migration corridor
    - Fisheries
    - Threatened and endangered species
  - 7) Natural Resources - M
    - Air
    - Watershed
    - Forests
  - 8) Economic Resources - M
    - Tourism
    - Real estate/land values
    - Local revenue
- H - High priority items  
M – Moderate priority items  
L – Low priority items

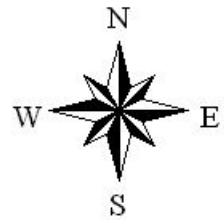
**East Portal Coalition**  
**Community Action Plan**

- 1) Promote education, outreach and awareness at the community level.
- 2) Identify hazards, risks and opportunities.
- 3) Define options, techniques and appropriate methods for projects.
- 4) Secure the necessary permission and approvals to accomplish projects.
- 5) Implement projects
  - Identify required resources
  - Perform approved activities
- 6) Monitor, evaluate and report on project results and activities.

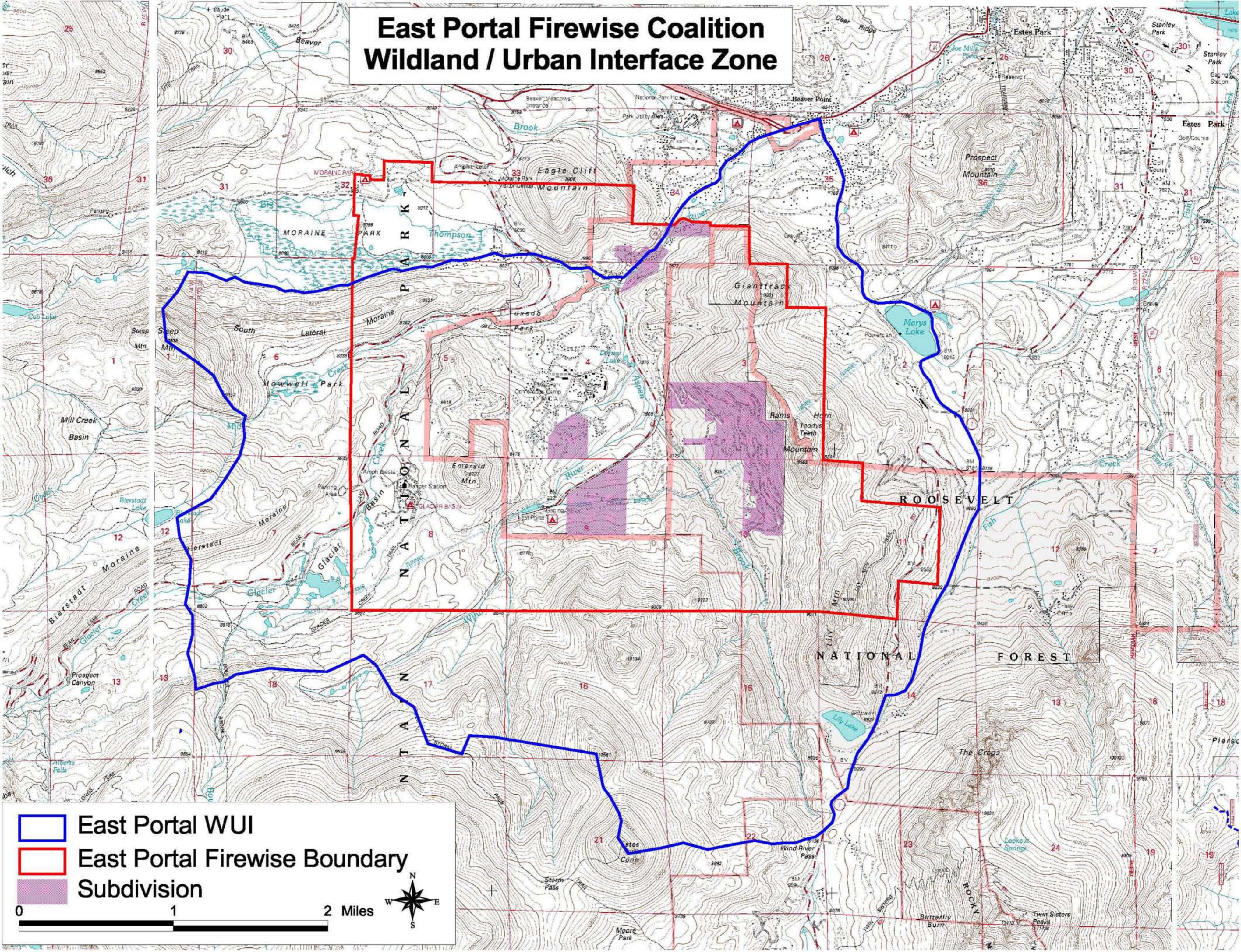
# East Portal FireWise Boundary






-  East Portal Boundary
-  Roadcl
-  Rivers and Streams
-  Lakes
-  Parcels
- National Forest
  -  NFS
  -  Rocky Mtn National Park



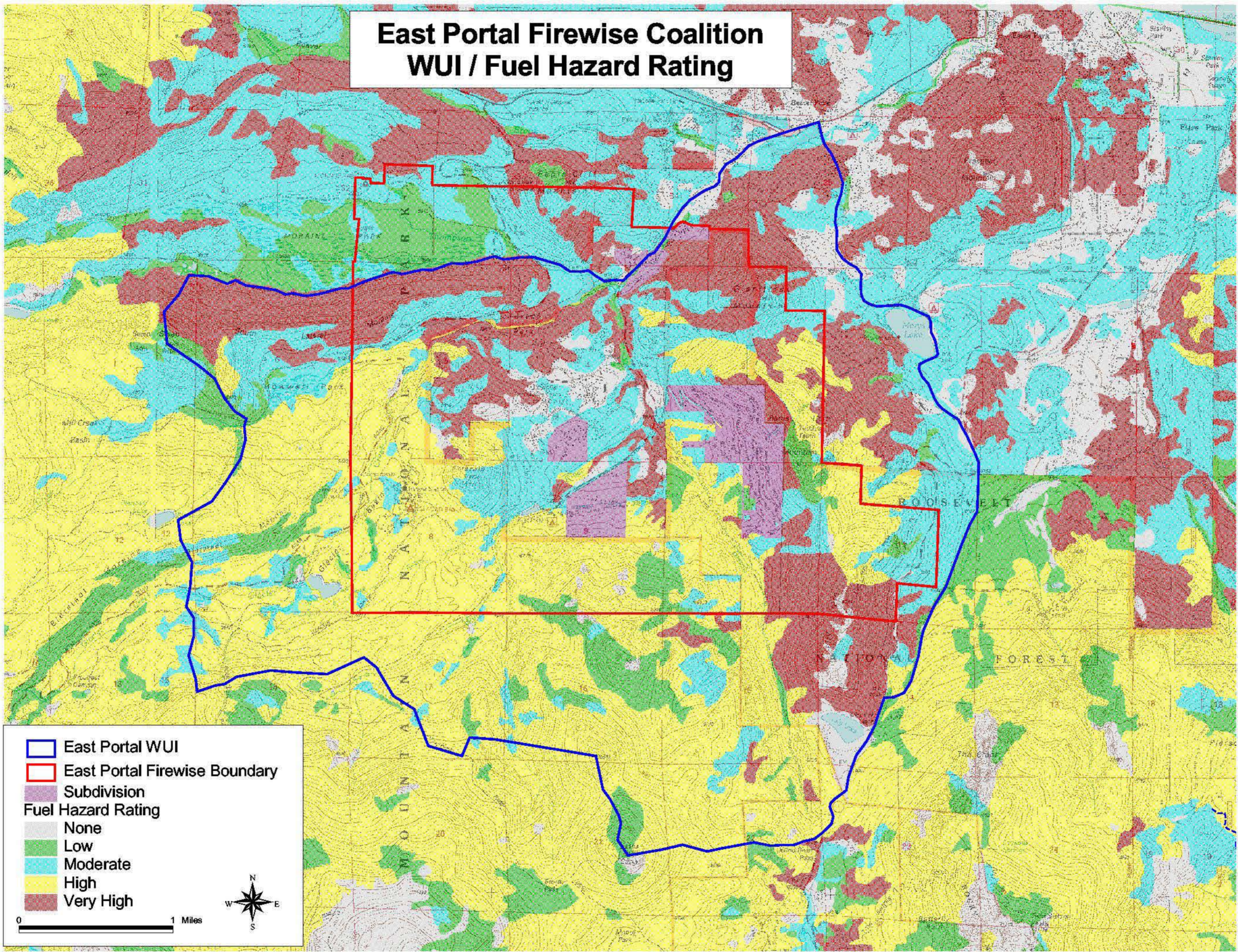
# East Portal Firewise Coalition Wildland / Urban Interface Zone



-  East Portal WUI
-  East Portal Firewise Boundary
-  Subdivision



# East Portal Firewise Coalition WUI / Fuel Hazard Rating



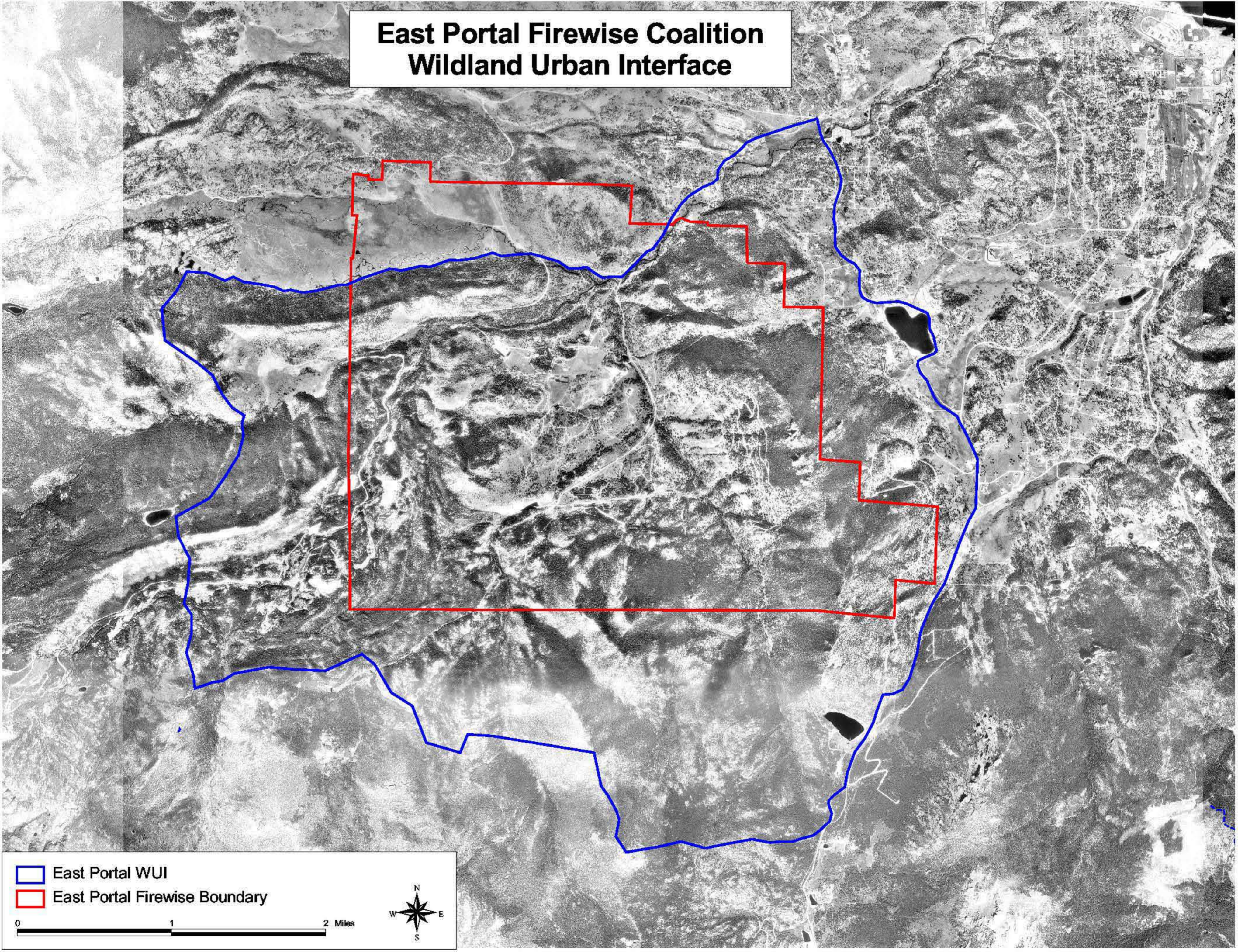
- East Portal WUI
- East Portal Firewise Boundary
- Subdivision
- Fuel Hazard Rating
  - None
  - Low
  - Moderate
  - High
  - Very High





0 1 Miles



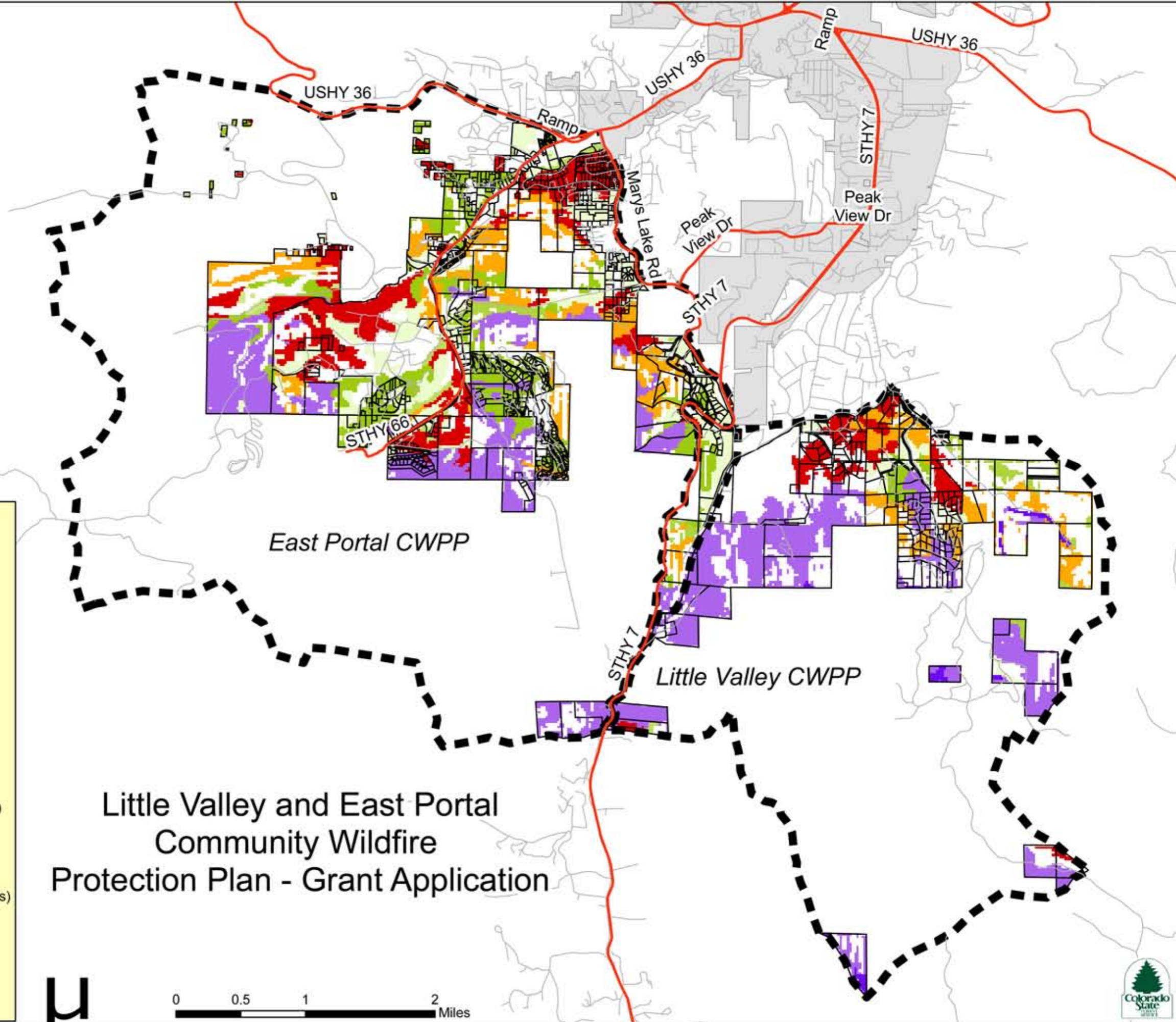
# East Portal Firewise Coalition Wildland Urban Interface



-  East Portal WUI
-  East Portal Firewise Boundary

0 1 2 Miles





Areas displayed meet the following criteria:

1. Private Lands
2. Slope <40%
3. Wildfire Hazard rating of Moderate, High, or Very High

Analysis utilized 30 meter DEM, fuel hazard information from Larimer County Wildfire Safety Coordinator, and parcel data from the Larimer County GIS department.

There are 1327.0 acres in the Little Valley CWPP and 2915.8 acres in East Portal CWPP that meet these criteria. Breakdown by species coded in the legend.

Light Green	Moderate - Grass (EP 543.3 acres)(LV 79.0 acres)
Light Green	Moderate - Shrub (EP 19.8 acres)(LV 0 acres)
Light Green	Moderate - Willow (EP 45.4 acres)(LV 3.1 acres)
Light Green	Moderate - Douglas fir (EP 41.6 acres)(LV 52.7 acres)
Light Green	Moderate - Ponderosa Pine (EP 565.5 acres)(LV 37.1 acres)
Yellow	High - Lodgepole pine (EP 686.3 acres)(LV 707.0 acres)
Yellow	High - Spruce/Fir (EP 0 acres)(LV 35.6 acres)
Orange	Very High - Douglas fir (EP 422.3 acres)(LV 218.4 acres)
Red	Very High - Ponderosa Pine (EP 591.6 acres)(LV 194.2 acres)

- Black dashed line: CWPP Areas
- Yellow outline: Parcels meeting criteria
- Thin grey line: Minor Roads
- Thick red line: Major Roads
- Grey area: Estes Park

