

Community Wildfire Protection Plan

Pinewood Reservoir
Larimer County, Colorado

Updated 10/29/2008

Introduction

This *Community Wildfire Protection Plan* (CWPP) was developed by Pinewood Reservoir with guidance and support from Larimer County, Colorado State Forest Service, US Forest Service. This CWPP supplements several Larimer County documents referenced in Appendix A. Information in this plan will be provided at a level of specific it determine by the community and appropriate agencies.

The process of developing a CWPP can help a community clarify and refine its priorities for the protection of life, property, and critical infrastructure in the wildland-urban interface. It can also lead community members through valuable discussions regarding management options and implications for the surrounding watershed.

Community / Agencies / Interested Parties Involved

Representatives involved in the development of the Pinewood Reservoir CWPP are included in the following table. Their name, organization, and roles and responsibilities are indicated below:

CWPP Development Team

Name	Organization	Roles / Responsibilities
Ron Linville, Helen Greene	Pinewood Reservoir Homeowners Association and/or Community Representatives	Primary development of CWPP and decision making – community risk and value assessment, development of community protection priorities, and establishment of fuels treatment project areas and methods
Chief Rick Davis,	Loveland Fire Department—Mutual Aid, Larimer County	Primary development of CWPP and decision making – community risk and value assessment, development of community protection priorities, and establishment of fuels treatment project areas and methods
Wendy McCartney, Boyd Lebeda	Colorado State Forest Service	Facilitation of planning process and approval of CWPP process and minimum standards. Provides input and expertise on forestry, fire and fuels, and FireWise concepts.
Tony Simons	Larimer County Wildfire Safety Program/ Larimer County Emergency Services	Provides input and expertise on hazard assessment, defensible space, and FireWise concepts.
Dick Edwards	Relevant federal land management agencies (USFS, BLM, etc.)	Provides input and expertise on federal lands forestry, fire and fuels, and FireWise concepts.
	Other organizations designated by the core team (Environmental groups, utilities, recreational groups, etc.)	Provides input and expertise. This could include community risk and value assessment, development of community protection priorities, and establishment of fuels treatment project areas and methods.

Identification of Values at Risk

Using technology and local expertise, Pinewood Reservoir has developed a base map and narrative of the community and adjacent landscapes of interest. This map will act as a visual aid from which community members can assess and make recommendations. The base map includes, at a minimum, the following:

- Inhabited areas and values at potential risk to wildland fire
- Areas containing critical human infrastructure—such as evacuation routes, municipal water supply structures, and major power or communication lines—that are at risk from wildfire
- A preliminary designation of the community's Wildland Urban Interface (WUI) zone.

Community Risk Assessment

The purpose of the community risk assessment is to help to prioritize areas for treatment and identify the highest priority uses for available financial and human resources. This section is divided into five areas of concern:

- Fuel Hazards – An evaluation of vegetation conditions within the community and on adjacent lands. Products included are:
 - Larimer County Wildfire Safety Program – Subdivision Wildfire Hazard Review
 - Larimer County Fuel Hazard Map
- Risk of Wildfire Occurrence – An evaluation of the probability of fire ignition within the community and surrounding lands.
- Risk to homes, businesses, and essential infrastructure – An evaluation of the vulnerability of structures within the community to ignition from firebrands, radiation, and convection. Also includes an evaluation of risks to essential infrastructure such as evacuation routes, water supply structures, and power and communication lines. Products may include:
 - Structure Assessment (construction materials, structure access, defensible space, etc.)
 - Infrastructure Assessment (utilities, water, community roads, power lines, etc.)
- Risk to Other Community Values – An evaluation of risk to other community values such as wildlife habitat, recreation and scenic areas, water supplies, and landscapes of historical, economic or cultural value.
- Local Preparedness and Firefighting Capability
 - Initial response to all fire, medical and associated emergencies is the responsibility of Loveland Fire Department/Larimer County. Wildland fire responsibilities of Larimer County, Colorado State Forest Service, United States Forest Service, Bureau of Land Management and the National Park Service are described in the current *Larimer County Annual Operating Plan*. All mutual aid agreements, training, equipment, and response are the responsibility of the local fire department and the agencies listed above.

Hazard Reduction Priorities

Pinewood Reservoir is located within the Wildland/Urban Interface on the Front Range and is in the process of developing a Community Wildfire Protection Plan with the assistance of Larimer County and Colorado State Forest Service. The community is within Larimer County, and therefore is supported by the Larimer County Fire Plan.

The community encompasses 200 acres, with 63 lots and 62 residences. Treating High and Very High fire danger areas have been identified as crucial to reducing wildfire risk. Pinewood Reservoir has two stands of densely forested mixed conifer that grow in swaths across the community; these two stands are within the red and yellow zones on the attached map, which denotes those areas as having severe and high risk, respectively.

Action Plan

Pinewood Reservoir has developed an action plan which identifies roles and responsibilities, funding needs and timetables listed in Hazard Reduction Priorities. The core team will meet annually to evaluate progress and mutually agree on treatment priorities.

Education

Pinewood Reservoir has held numerous community meetings to educate the citizens of the wildfire problems and proposed solutions in cooperation with the Loveland Fire Department, Larimer County and Colorado State Forest Service. Pinewood Reservoir supports and promotes Firewise activities as outlined in the Larimer County Fire Plan. Pinewood Reservoir supports and educates its citizens in ways to reduce structure ignitibility through meeting Larimer County Building Code Requirements and utilizing Colorado State Forest Service FireWise Construction Fact Sheets.

Hazard Fuel Treatments

Pinewood Reservoir has a history of Firewise education and has been working to educate landowners and implement defensible space around their current structures, with the assistance of Larimer County and the Colorado State Forest Service. Currently, about $\frac{3}{4}$ of the homes in this community have completed defensible space; most of those landowners have also requested that thinning be expanded out from the original defensible zone to include the rest of their property. The community has strong leadership, has been supportive of local fuel reduction activity, and has worked closely with Larimer County and the Colorado State Forest Service on the Community Wildfire Protection Plan.

The community, in cooperation with Larimer County and the Colorado State Forest Service, plans to pursue grant funds to thin densely forested land that run throughout the subdivision. These projects are completely on private property, however the U.S. Forest Service along with Larimer County have assisted the community in identifying treatment locations. Fuel reduction projects have strong community support and the community has allocated funds to begin their project. Community members meet regularly; prune, chip and haul slash and are a mix of seasonal and permanent residents; annual volunteer time can be estimated at 200 hours. It is anticipated that a county crew or contractor would be hired to fell and chip the marked trees. As of October 2008 Pinewood Reservoir is implementing phase IV of the plan.

The following community representatives / agencies have reviewed and support this *Community Wildfire Protection Plan*.

Pinewood Reservoir

Loveland Fire department

Fort Collins District
Colorado State Forest Service

Appendix A

Larimer County Fire Plan a Community Wildfire Protection Plan (Larimer County 2004)

Larimer County Wildfire Mitigation Plan (CSFS 1998)

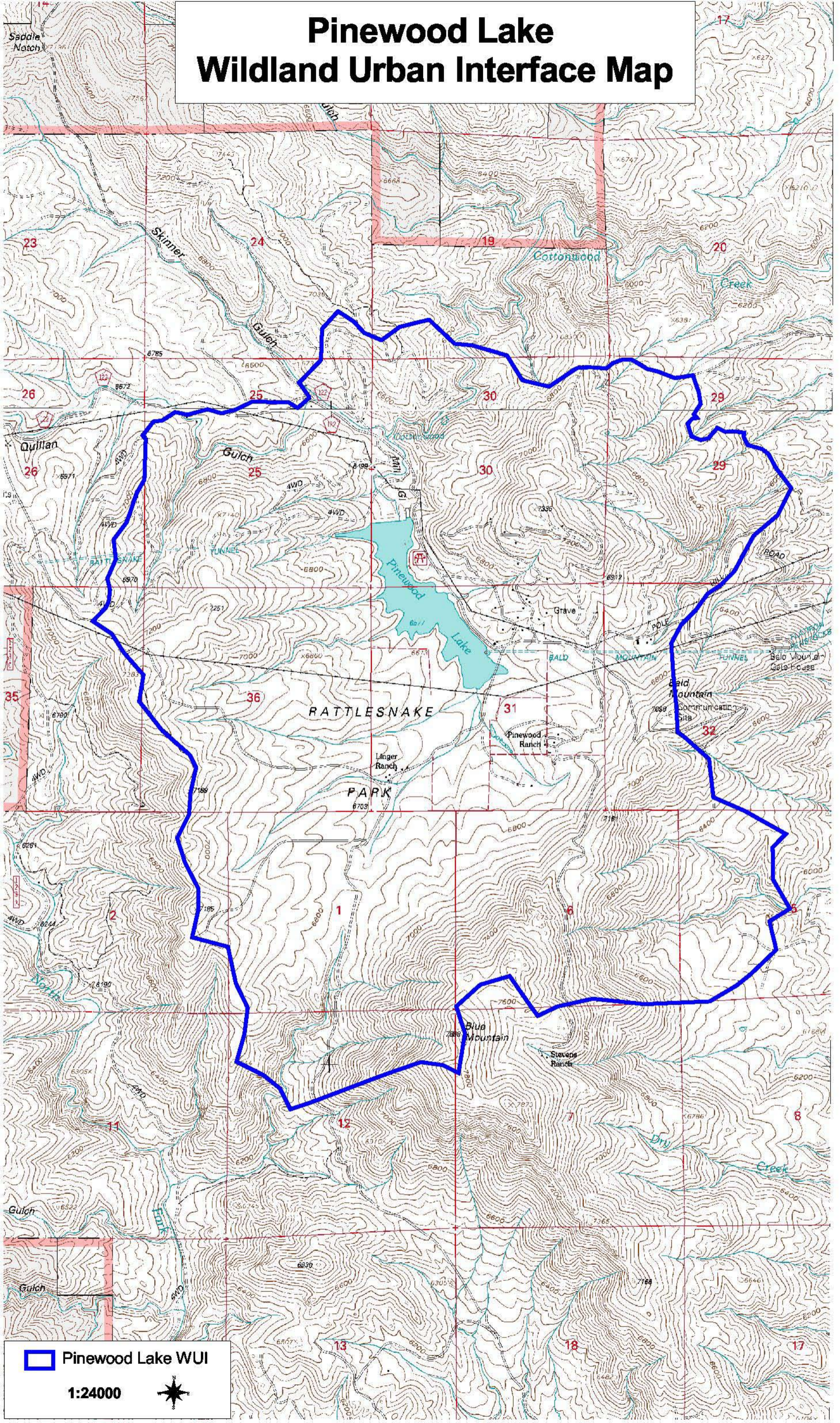
Recommendations for Improving Wildfire Safety in Larimer County (CSFS 1997)

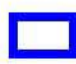
Larimer County Subdivision Wildfire Hazard Review (Larimer County/CSFS 2002)

Larimer County Annual Operating Plan (updated annually)

FEMA—Northern Colorado Natural Hazard Mitigation Plan (2004)

Pinewood Lake Wildland Urban Interface Map

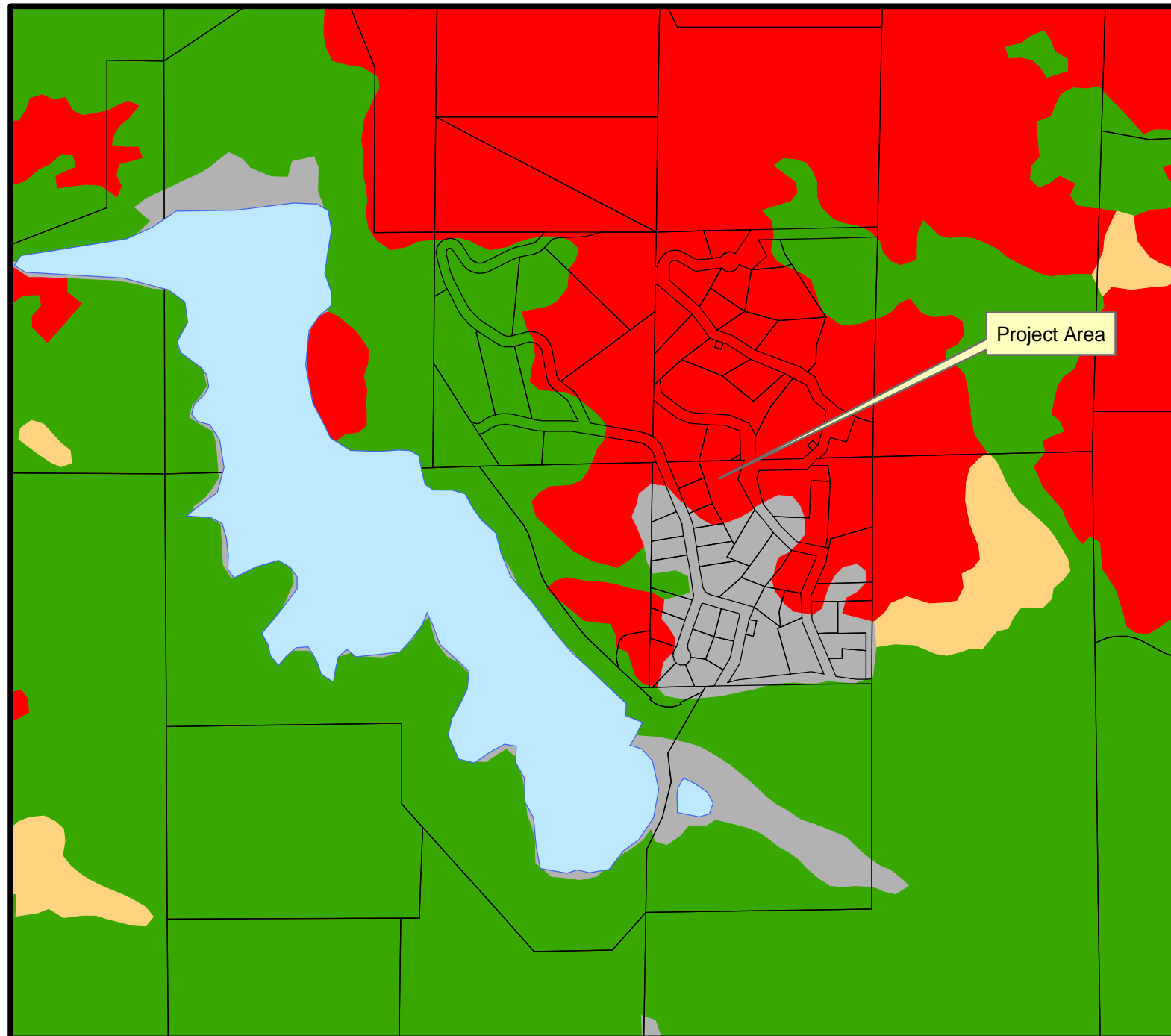


 Pinewood Lake WUI

1:24000



Pinewood Lake



Legend

- Open Water
- Parcels
- County Boundary
- LOWEST
- LOW
- MODERATE
- HIGH
- VERY HIGH

0 420 840 1,680 Feet