

## Community Wildfire Protection Plan

Big Elk Meadows  
Larimer County, Colorado

7/3/2007

### Introduction

This *Community Wildfire Protection Plan* (CWPP) was developed by Big Elk Meadows with guidance and support from United States Forest Service, Colorado State Forest Service, and Larimer County. This CWPP supplements several Larimer County documents referenced in Appendix A. Information in this plan will be provided at a level of specificity determined by the community and appropriate agencies.

The process of developing a CWPP can help a community clarify and refine its priorities for the protection of life, property, and critical infrastructure in the wildland-urban interface. It can also lead community members through valuable discussions regarding management options and implications for the surrounding watershed.

### Community / Agencies / Interested Parties Involved

Representatives involved in the development of the Big Elk Meadows CWPP are included in the following table. Their name, organization, and roles and responsibilities are indicated below:

#### **CWPP Development Team**

<b>Name</b>	<b>Organization</b>	<b>Roles / Responsibilities</b>
???	Big Elk Meadows Board	Primary development of CWPP and decision making – community risk and value assessment, development of community protection priorities, and establishment of fuels treatment project areas and methods
Jerry Guthrie (Chief), Leonard Arnold, Collin Isenhardt, Richard Carr, Clement Smith	Big Elk Meadows Volunteer Fire Department	Primary development of CWPP and decision making – community risk and value assessment, development of community protection priorities, and establishment of fuels treatment project areas and methods
Boyd Lebeda, District Forester, Fort Collins District	Colorado State Forest Service	Facilitation of planning process and approval of CWPP process and minimum standards. Provides input and expertise on forestry, fire and fuels, and FireWise concepts.
Tony Simons, Emergency Services Specialist	Larimer County Wildfire Safety Program	Provides input and expertise on hazard assessment, defensible space, and FireWise concepts.
Dick Edwards, USFS	Relevant federal land management agencies (USFS, BLM, etc.)	Provides input and expertise on federal lands forestry, fire and fuels, and FireWise concepts.
	Other organizations designated by the core team (Environmental groups, utilities, recreational groups, etc.)	Provides input and expertise. This could include community risk and value assessment, development of community protection priorities, and establishment of fuels treatment project areas and methods.

### Identification of Values at Risk

Using technology and local expertise, Big Elk Meadows has developed a base map and narrative of the community and adjacent landscapes of interest. This map will act as a visual aid from which community members can assess and make recommendations. The base map includes, at a minimum, the following:

- Inhabited areas and values at potential risk to wildland fire
- Areas containing critical human infrastructure—such as evacuation routes, municipal water supply structures, and major power or communication lines—that are at risk from wildfire
- A preliminary designation of the community's Wildland Urban Interface (WUI) zone.

### Community Risk Assessment

The purpose of the community risk assessment is to help to prioritize areas for treatment and identify the highest priority uses for available financial and human resources. This section is divided into five areas of concern:

- Fuel Hazards – An evaluation of vegetation conditions within the community and on adjacent lands. Products included are:
  - Larimer County Wildfire Safety Program – Subdivision Wildfire Hazard Review
  - Larimer County Fuel Hazard Map
- Risk of Wildfire Occurrence – An evaluation of the probability of fire ignition within the community and surrounding lands.
- Risk to homes, businesses, and essential infrastructure – An evaluation of the vulnerability of structures within the community to ignition from firebrands, radiation, and convection. Also includes an evaluation of risks to essential infrastructure such as evacuation routes, water supply structures, and power and communication lines. Products may include:
  - Structure Assessment (construction materials, structure access, defensible space, etc.)
  - Infrastructure Assessment (utilities, water, community roads, power lines, etc.)
- Risk to Other Community Values – An evaluation of risk to other community values such as wildlife habitat, recreation and scenic areas, water supplies, and landscapes of historical, economic or cultural value.
- Local Preparedness and Firefighting Capability
  - Initial response to all fire, medical and associated emergencies is the responsibility of the Big Elk Meadows VFD. Wildland fire responsibilities of Larimer County, Colorado State Forest Service, United States Forest Service, Bureau of Land Management and the National Park Service are described in the current *Larimer County Annual Operating Plan*. All mutual aid agreements, training, equipment, and response are the responsibility of the local fire department and the agencies listed above.

### Hazard Reduction Priorities

Please refer to the attached prioritized list of community needs regarding fuel reduction treatments within the WUI zone.

- Fuel reduction needs (Attached map identifying treatment types and ways to reduce structural ignitability.)
- Fire response needs

### Action Plan

Big Elk Meadows has developed and attached an action plan which identifies roles and responsibilities, funding needs and timetables listed in Hazard Reduction Priorities. The core team will meet annually to evaluate progress and mutually agree on treatment priorities.

In cooperation with the Larimer County Fire Education Group, the Larimer Fire Council, and the Big Elk Meadows VFD the Big Elk Meadows community supports and promotes Firewise activities as outlined in the Larimer County Fire Plan. Big Elk Meadows supports and educates its citizens in ways to reduce structure ignitability through meeting Larimer County Building Code Requirements and utilizing Colorado State Forest Service FireWise Construction Fact Sheets.

The following community representatives / agencies have reviewed and support this *Community Wildfire Protection Plan*.

---

Big Elk Meadows Association

---

Big Elk Meadows Volunteer Fire Department

---

Fort Collins District  
Colorado State Forest Service

---

USDA Forest Service

## **Appendix A**

Larimer County Fire Plan a Community Wildfire Protection Plan (Larimer County 2004)

Larimer County Wildfire Mitigation Plan (CSFS 1998)

Recommendations for Improving Wildfire Safety in Larimer County (CSFS 1997)

Larimer County Subdivision Wildfire Hazard Review (Larimer County/CSFS 2002)

Larimer County Annual Operating Plan (updated annually)

FEMA—Northern Colorado Natural Hazard Mitigation Plan (2004)

## Wildfire Hazard Rating For Subdivision BIG ELK MEADOWS

**Date Evaluated:** 11/11/94

### Ratings

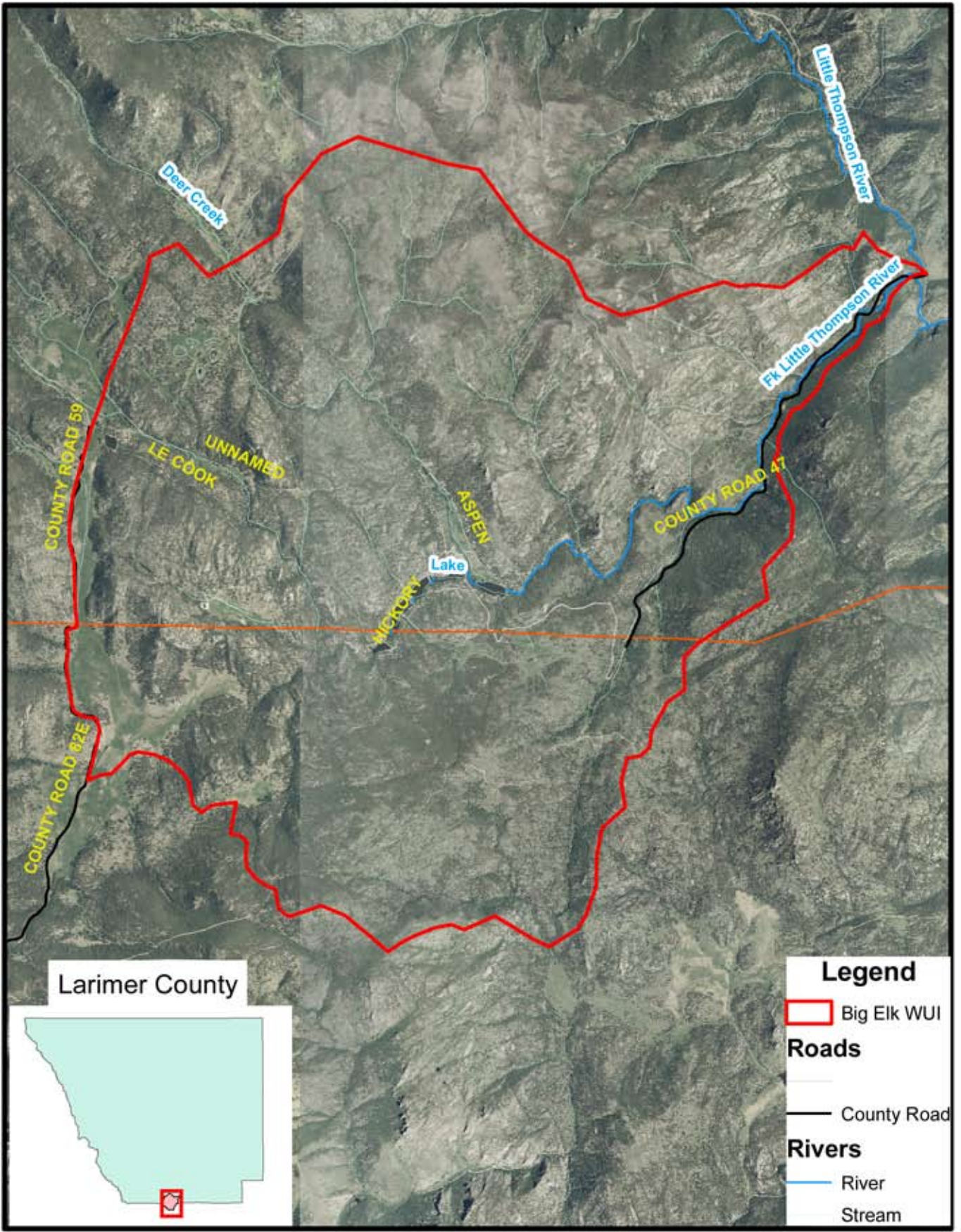
[What Do These Numbers Mean?](#)

Criteria	Score
Ingress/Egress	5
Primary Road Width	1
Accessibility	1
Secondary Road Terminus	1
Average Lot Size	3
Street Signs	1
Fuel Type	3
Defensible Spaces Completed	5
Slope	5
Response Time	1
Water Source (within subdivision)	5
Water Source (off site)	0
Materials (predominant)	5
Utilities (gas and electric)	10
<b>Total Score</b>	<b>46</b>
<b>Rating</b>	<b>Moderate</b>

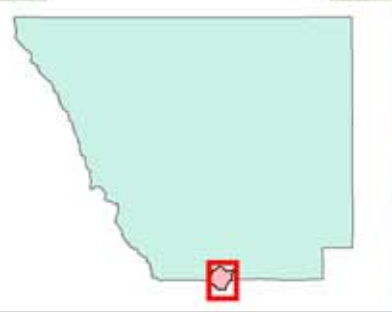
---

200 W. Oak Street • Fort Collins, CO 80521 • 970-498-7000 || © 1995-2008, Larimer County

# Big Elk CWPP

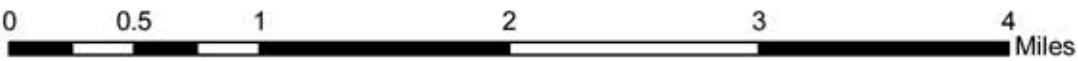


Larimer County

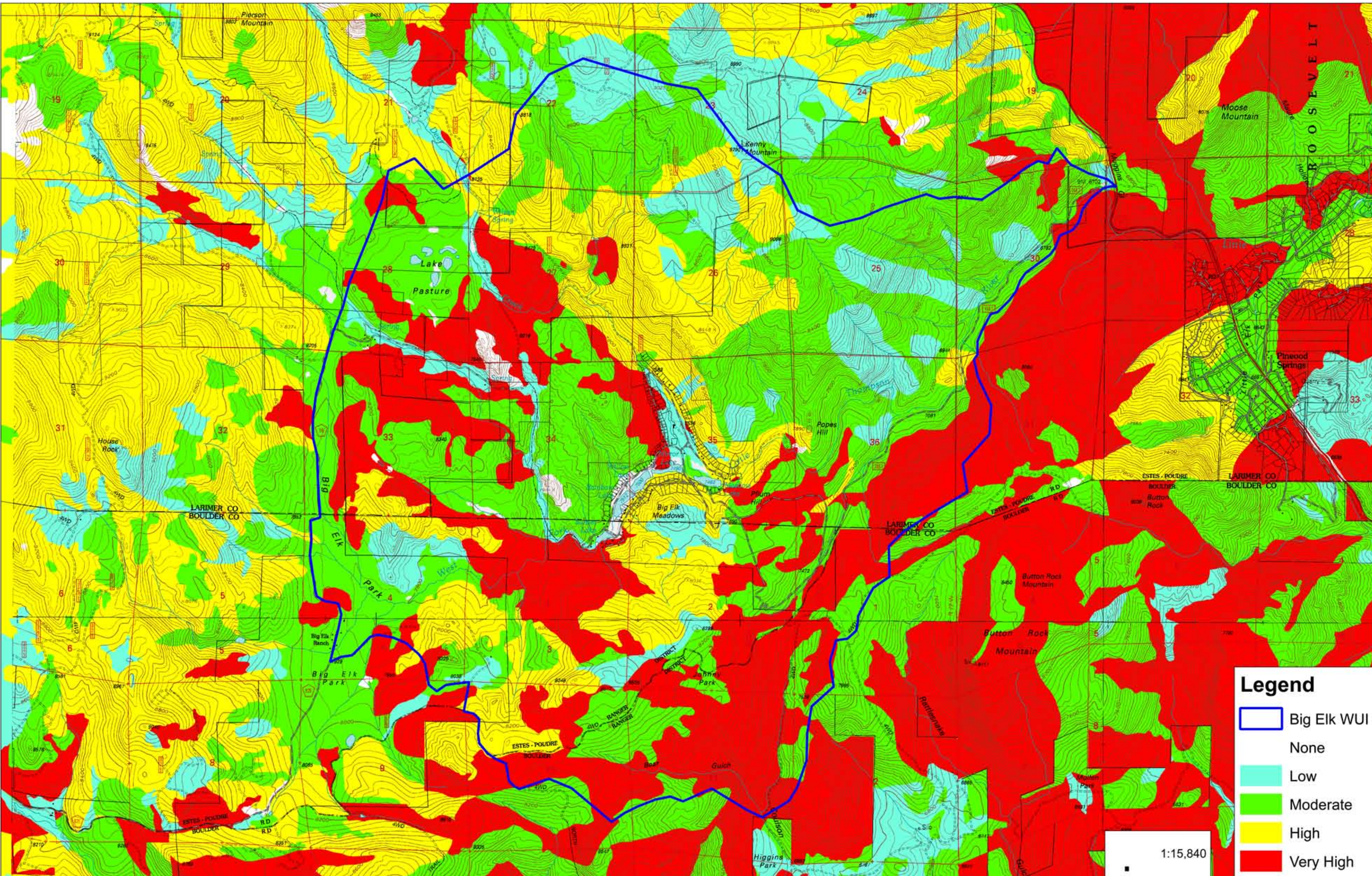


## Legend

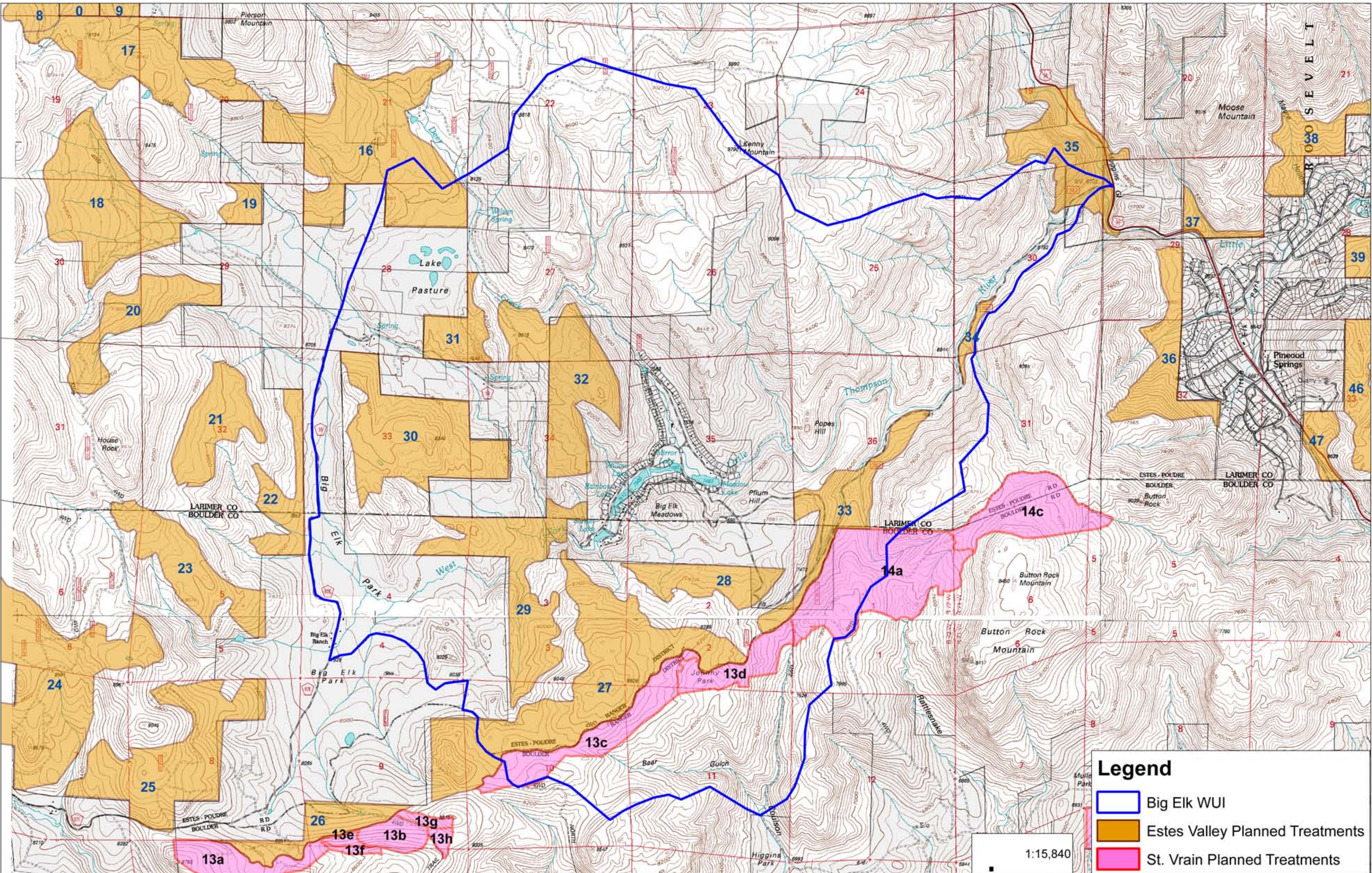
-  Big Elk WUI
- Roads**
-  County Road
- Rivers**
-  River
-  Stream



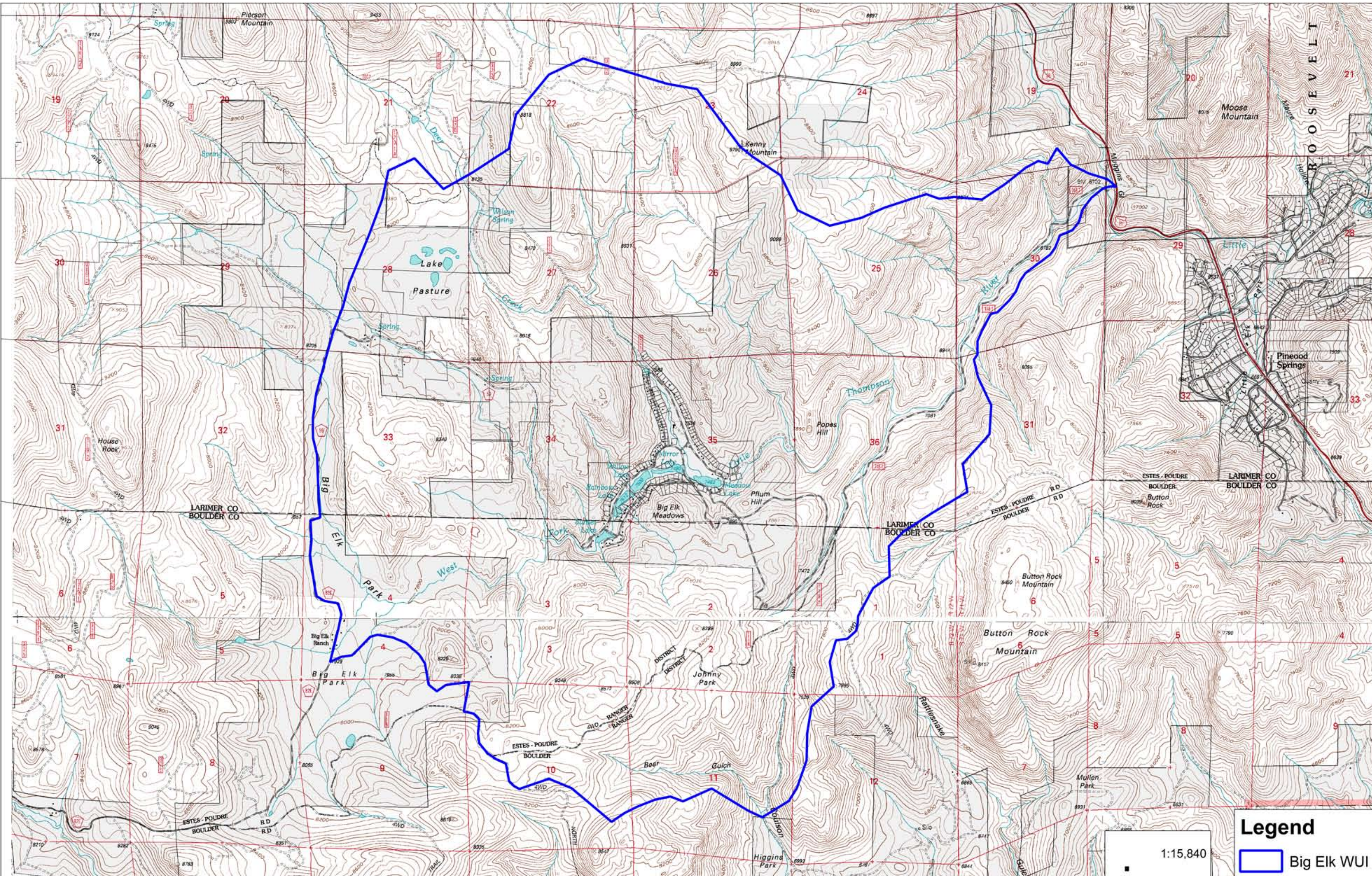
Big Elk Meadows - WUI  
Fuel Hazard Rating Map



Big Elk Meadows WUI  
National Forest Planned Treatments



Big Elk Meadows  
Wildland Urban Interface Zone



Legend

Big Elk WUI

1:15,840