

PLEASE NOTE: Members, when addressing Faculty Council, please stand and identify yourselves. Guests wishing to speak please fill out a guest card to be handed to the Chair prior to speaking.

PLEASE NOTE: Members planning to introduce amendments are requested to provide copies to the Faculty Council Office, 18-A Administration, at least 24 hours before this meeting.

AGENDA
Faculty Council Meeting
Tuesday, February 7, 2012 - 4:00 p.m. - Room A102 Clark Building

Announcements

- A. Next Faculty Council Meeting - Tuesday - March 6, 2012 - A102 Clark - 4:00 p.m.
- B. Elections for Faculty Council Chair, Vice Chair, and Board of Governors Faculty Representative - Committee on Faculty Governance - March 6, 2012 - Committee on Faculty Governance (pp. 1-5)
- C. Faculty Council Standing/Advisory Committees Tracking Lists (pp. 6-7)
- D. Executive Committee Meeting Minutes: November 15, 29, 2011 and January 17, 24, 2012 (view at <http://facultycouncil.colostate.edu/index.asp?url=links>)

Minutes to be Approved

- A. Faculty Council Meeting Minutes - December 6, 2011 (pp. 8-20)

Reports To Be Received

- A. Provost/Executive Vice President - Rick Miranda
- B. Faculty Council Chair - Tim Gallagher
- C. Board of Governors Faculty Representative - Carole Makela (pp. 21-23)
- D. Committee on Strategic and Financial Planning - Tony Maciejewski

Consent Agenda

- A. Changes in Curriculum to be Approved: University Curriculum Committee Minutes: November 11, and 18, December 2 and 9, 2011 (pp. 24-47)
- B. Approval of Degree Candidates - Spring and Summer Semesters 2012 (p. 48)

*Secretary's Note: Please detach at this line, **print your name**, and leave in the attendance box at the Faculty Council meeting. If you must be absent, you are encouraged to send a substitute representative of academic faculty status in order to provide proper representation at the meeting. Substitutes should turn in the attendance slip at the meeting and indicate on the slip whom they are representing.*

Action Items

- A. Request to Create a Special Academic Unit - Molecular, Cellular and Integrative Neuroscience Program of Research and Scholarly Excellence - University Curriculum Committee (pp. 49-56)
- B. Request to add a Plan B - Master of Science Degree Program in Design and Merchandising - University Curriculum Committee (pp. 57-62)
- C. Request to Create a Plan C Master of Tourism Management Degree Program - University Curriculum Committee (pp. 63-68)
- D. Request to Add a Minimum Grade Requirement for the Ethnic Studies Major and Minor - University Curriculum Committee (p. 69)
- E. Proposed Revisions to the Graduate and Professional Bulletin - Section H.3.8 - Degree Conferral - Committee on Scholarship, Research, and Graduate Education (p. 70)
- F. Proposed Revisions to the Graduate and Professional Bulletin - Section D.5 - Application: International Students - Committee on Scholarship, Research, and Graduate Education (pp. 71-72)
- G. Proposed Revisions to the Manual, Section D.7.13 - Travel Policies - Committee on Responsibilities and Standing of Academic Faculty (p. 73)

Discussion Item

- A. Curricular Issues - Alan Lamborn, Vice Provost for Undergraduate Affairs, Howard Ramsdell, Chair, University Curriculum Committee, and Robert Jones, Professor, Microbiology, Immunology and Pathology

NOMINATIONS FOR FACULTY COUNCIL OFFICERS

The Committee on Faculty Governance is taking nominations for Faculty Council Chair, Vice-Chair, and Faculty Representative to the Board of Governors.

According to the *Manual*, University Code, Section C.2.1.3.3:

The ***Chairperson of the Faculty Council*** shall be elected from the academic faculty members who are current or former members of the Faculty Council at the regularly scheduled March meeting. The Chairperson shall serve a one (1) year term beginning in July and shall relinquish representation of a department or college (if serving in that capacity) to become a representative and member of the Faculty Council. The Chairperson shall be eligible to serve three (3) consecutive years, and then would be ineligible to serve as Chairperson or Vice Chairperson of Faculty Council for three (3) subsequent years. The Chairperson shall preside at meetings of the Faculty Council, serve as Chairperson of the Executive Committee and as Faculty Council representative to the Colorado Faculty Advisory Committee, and discharge the usual duties of the office. In the event that the elected chairperson is unable to complete his or her term of office, new elections will commence at the next Faculty Council meeting, or as soon as possible thereafter, to fill the unexpired term according to the procedures outlined in Section C.2.1.3.3.d.

The ***Vice Chairperson of the Faculty Council*** shall be elected from the academic faculty who are current or former members of the Faculty Council at the regularly scheduled March meeting. The Vice Chairperson shall serve a one (1) year term beginning in July and shall relinquish representation of a department or college (if serving in that capacity) to become a representative and member of the Council. The Vice Chairperson shall be eligible to serve additional terms. In the absence of or at the request of the Chairperson, the Vice Chairperson shall assume the duties of the Chairperson. In the event that the elected Vice Chairperson is unable to complete his or her term of office, new elections will commence at the next Faculty Council meeting, or as soon as possible thereafter, to fill the unexpired term according to the procedures outlined in section C.2.1.3.3.d.

The ***Faculty Council Representative to the Board*** - The Faculty Council shall elect an academic faculty member holding the rank of associate professor or professor and who is a current or former member of the Faculty Council to serve as a non-voting member of the Board and as an officer of the Faculty Council. The election shall occur at the regularly scheduled March meeting. The faculty representative shall serve a one (1) year term beginning in July and shall relinquish representation of a department or college (if serving in that capacity) to become a representative and member of the Council. No person shall serve more than two (2) consecutive terms. In the event the elected representative is unable to complete his or her term of office, new elections will commence at the next Faculty Council meeting, or as soon as possible thereafter, to fill the unexpired term according to the procedures outlined in Section C.2.1.3.3.d.

Voting Procedures - The Committee on Faculty Governance will present one (1) or more nominees, and nominations may be made from the floor. Voting will be by written ballot unless otherwise specified. If only one (1) candidate is nominated, voting can be by voice vote. The candidate receiving a majority of votes cast will be elected. In the event that no candidate receives a majority, a second ballot will consist of two (2) candidates receiving the highest number of votes. On the second ballot, the candidate receiving the highest number of votes will be elected.

This is the first step in the nomination process. The Committee on Faculty Governance is seeking nominations for Faculty Council Chairperson, Vice-Chairperson, and Faculty Council Representative to the Board of Governors. Because of the significant time commitment, it is important for the nominee to realize the responsibilities of each of the positions. For informational purposes, attached are descriptions of the duties of each office. **Before you submit a name, the nominee should have agreed to serve, if elected, and consulted with his/her department head and dean.** It is further suggested that the nominee talk with faculty who have recently served in these offices:

Chairperson
Tim Gallagher

Vice-Chairperson
Karrin Anderson

Board of Governors Representative
Carole Makela

Please send nominations to: Luis Garcia, Chair, Committee on Faculty Governance c/o Diane Maybon, Faculty Council - (dmaybon@colostate.edu) or Campus Mail 1001 on or before Friday, February 10, 2012. The Committee on Faculty Governance will prepare a slate of nominees for each office to be presented to Faculty Council at the March 6, 2012 meeting. ***Nominations will also be accepted from the floor at the Faculty Council meeting.*** As stipulated by the University Code, elections will be conducted at the March Faculty Council meeting.

CHAIRPERSON OF FACULTY COUNCIL

Purpose

The Chairperson is elected by and serves the Faculty Council and is responsible for representing faculty views in a variety of contexts and facilitating the process of shared governance.

Duties

1. Oversee and direct flow of Faculty Council business to and from the 11 standing committees. Oversee the agendas for the monthly Faculty Council and weekly Executive Committee meetings.
2. Chair the Faculty Council and the Executive Committee meetings and implement instructions stemming from those meetings regarding issues discussed.
3. Consult with chairs of the standing committees on committee issues and the process for moving items forward. Serve as *ex officio* member of all Faculty Council standing committees.
4. Conduct fall meetings for new Faculty Council representatives and for the chairs of Faculty Council standing committees in order to clarify responsibilities and foster communication on shared issues.
5. Meet regularly with the President, the Provost/Senior Vice President, the Chair of the Administrative Professional Council (APC), the Officers of the Associated Students of Colorado State University (ASCSU), and others to discuss University issues.
6. Represent Faculty Council, upon request, at any University function or meeting.
7. Serve on the University Strategic Planning Committee.
8. Serve on University task forces or committees as need dictates.
9. Serve as a voting member of the Council of Deans.
10. Serve as a member of the President's Cabinet.
11. Meet with all newly appointed deans or vice provosts to review Faculty Council policies and procedures, etc.
12. Chair - Honorary Degree Committee (Honorary Degree Committee advises the President on candidates for honorary degrees.)
13. Attend periodic meetings of the Colorado Faculty Advisory Council (CFAC).
14. Attend appropriate regional and national meetings devoted to faculty governance.
15. Attend community social events as Faculty Council representative.
16. The Chair shall have the responsibility to contact Faculty Council and Standing Committee members individually each semester regarding low attendance at Faculty Council or Standing Committee meetings. If that has no effect, the Chair will contact the individual's department head/chair to encourage his/her support of Faculty Council/Standing Committee attendance.

Term and Eligibility

Three one-year consecutive terms. Term begins July 1. Must be a current or former member of the Faculty Council. Available for 12-36 months.

Time Commitment and Support

The time commitment is full-time during the academic year and approximately half-time during the summer. The Provost is committed to full salary support of the position for the nine-month academic year and one month's salary in the summer.

Since the time commitment of the Faculty Council Chairperson is considerable, but temporary (3 years) the research program of the individual accepting this position must be maintained. Therefore up to 50 percent of his/her annual departmental salary should be set aside for each year that the faculty member serves as Chairperson of Faculty Council. These reserve research funds must be expended or forfeited within three years after the termination of the duties of the Chairperson of Faculty Council. When possible, the retreating Chairperson will be provided the opportunity to assume the same teaching schedule to which he/she was assigned prior to becoming Chairperson of Faculty Council.

VICE-CHAIR OF FACULTY COUNCIL

Purpose

The Vice-Chair is elected by and serves the Faculty Council. The role traditionally provides experience preparatory to serving as Chair of Faculty Council.

Duties

1. Conduct Faculty Council or Executive Committee meetings in the absence of the Chair of Faculty Council.
2. Attend University or State functions as a representative of Colorado State University faculty when the Chair is unable to attend or upon specific request.
3. Spearhead specific short-term projects or tasks as requested by Executive Committee or the Chair of Faculty Council. Represent Faculty Council on task forces.
4. Assist Executive Assistant taking Faculty Council and Executive Committee meeting minutes.
5. Meet regularly with the Faculty Council Officers, the Provost, and President.
6. Member of the following University Committees:
 - a. Advisory Committee on Academic Affairs (ACUA)
 - b. Advisory Committee on Enrollments
 - c. Classified Personnel Council
 - d. Outstanding Achievement Award Committee
 - e. Committee on College Articulation and Agreements
7. Attend University and community social events as representative of Faculty Council.
8. Coordinates the Executive Committee's evaluation of the Chairperson of Faculty Council.
9. Responsible for drafting the University Academic Calendar.

Term of Office and Eligibility

One-year term - no term limit. Term begins July 1. Must be a current or former member of the Faculty Council. Available for 12 months.

Time Commitment and Support

Time required varies considerably depending upon short-term projects, task forces, etc. Standing time commitments include Executive Committee (six hours a month), Faculty Council (two hours a month), approximately four hours per week for working with the Chair, approximately eight hours a month in meetings, and preparation time for above activities. The Provost is committed to partial support for this position.

FACULTY COUNCIL REPRESENTATIVE TO THE GOVERNING BOARD

Purpose

Serve as a liaison between the faculty of Colorado State University and the Board of Governors of the Colorado State University System (BOG) (Colorado State's governing board) as well as other constituencies of the University. The Representative is responsible to the Faculty Council of Colorado State.

Duties

1. Provide academic faculty perspectives and positions on issues to the Board of Governors: issues directly related to the Colorado State University System. Meetings of the BOG are typically scheduled late August, October, December, February, April, May and June at variable sites in the state. Two day meetings are the norm. The Faculty Representative meets with the Provost/Senior Vice President, the Student Representative to the BOG (the President of ASCSU) before each BOG meeting for information and coordination.
2. Develop and maintain positive working relationships with all BOG members, the administrators of the CSU System, and members of other constituencies of the University (alumni organizations, the Foundation, the press, etc.).
3. Represent the academic faculty of Colorado State at events where such a presence benefits the academic faculty, the University, and the system (briefings and receptions for the legislature, alumni, and the Foundation; dedications; dinners; etc.).
4. Report at applicable meetings of the Faculty Council on issues of concern from BOG meetings. In addition, the Representative prepares reports on issues of importance to the academic faculty and the BOG.
5. Serve on the Faculty Council Executive Committee, and maintain a close working relationship with the Chair of Faculty Council. The Faculty Council office should be kept informed of issues raised by the BOG.
6. Participates in the BOG evaluation of the President.

Term of Office

One year, limited to two terms (state statute). Term begins July 1.

Requirements

Rank of Associate or Full Professor (state statute); current or former member of the Faculty Council member of Faculty Council (Code).

Time Commitment and Support

The Board of Governors meetings occupy approximately two full days for each scheduled meeting. Executive Committee meets for approximately six hours a month. Faculty Council meets for approximately two hours once a month. Add whatever preparation time is necessary for the above and time spent at other events. The Provost/Senior Vice President is committed to partial support for this position (currently one month's salary plus fringe annually).

6

**Faculty Council Tracking
Location of Issues - Standing and Advisory Committees
FEBRUARY 2012**

EXECUTIVE COMMITTEE

- * Set monthly Faculty Council agendas

COMMITTEE ON FACULTY GOVERNANCE

- * 2012 FC Officers Elections
- * 2012 Elections - Discipline-Grievance-Sexual Harassment Panels - FC Standing Committees
- * Revisions to C.2.4.4.1.j - College Codes (proposal forthcoming from Gallagher Re: 2/3 vote to change college codes - September 2011)
- * Proposed Revisions to Section C.2.1.4 (Received from CoSTF January 2012)

COMMITTEE ON INTERCOLLEGIATE ATHLETICS

COMMITTEE ON LIBRARIES

- * Pilot Program for Open Access (December 2012)
- * Strategic Initiatives

COMMITTEE ON RESPONSIBILITIES AND STANDING OF ACADEMIC FACULTY

- * Proposed Revisions to Section K.3 (Gallagher sent 10/24/11)
- * Proposed Revisions to Section G.1 - Study Privileges (Gallagher sent September 2011)
- * Proposed Revisions to Section J (2011-12)
- * Review Reference Letters and Waivers (December 2011)
- * Consideration of Permanent Residency Requirements for Foreign Tenure Track Faculty (December 2011)
- * Proposed Revisions to Section D (forthcoming Spring 2012)
- * Proposed Revisions to Section I (forthcoming Spring 2012)

COMMITTEE ON STRATEGIC AND FINANCIAL PLANNING

- * On-going University Strategic Planning - Budget Planning - 2012-13

COMMITTEE ON SCHOLARSHIP, RESEARCH AND GRADUATE EDUCATION

- * Proposal for Cotutelle with ENS De Lyon

COMMITTEE ON SCHOLASTIC STANDARDS

- * On-going Retroactive Withdrawal Requests

COMMITTEE ON SPECIAL AND TEMPORARY FACULTY

- * Proposed Revisions to the Manual, Code, Section C.2.1.3.2 - *Ex Officio Members* (January 2012)
- * Proposed Revisions to the Manual, Code, Section C.2.1.9.6 - Advisory Committee: membership and Function (January 2012)

COMMITTEE ON TEACHING AND LEARNING

- * Teaching and Learning Effectiveness Measures for Faculty Performance Evaluations (report from TILT received December 2012 proposal forthcoming for Manual revisions 2012)
- * Policies on Transfer of Course Work
- * Defaults for access to RamCT (Patrick Burns asked for input from CoTL 4/5/11)
- * UCC sent to CoTL 9/11 - Proposal for declaring major by 45 credits
- * UCC sent to CoTL 9/11 request to develop policy on proctoring nontraditional course exams
- * Course Surveys for On-Line Courses (Referred back to CoTL by EC 9/13/11)

COMMITTEE ON TEACHING AND LEARNING (Continued)

- * Review Religious Accommodation Policy for Students (Proposed Revisions to Manual and Catalog 9/11)
- * Proposed Revisions to the General Catalog (Proposed by Robin Brown - Undergraduate Planned Leave Option Policy - UCC to review upon CoTL review)

COMMITTEE ON UNIVERSITY PROGRAMS

- * On-going review and approval of Centers, Institutes and Other Special Units

UNIVERSITY CURRICULUM COMMITTEE

- * On-Going Curriculum Revisions/Degree Programs, etc. - Academic Year 2009-10
- * Guidelines for Required Course Elements (4/08 - possible Discussion Issue for FC)
- * Referred back to UCC - Graduate Interdisciplinary Studies Program in Resilience of Social Ecological System

BOARD OF GOVERNORS ACTION ITEMS

BOARD OF GOVERNORS PENDING FOR ACTION

- * Proposed Revisions to Section K

PENDING ACTIONS:

- * Review Sexual Harassment and Discrimination Policies (General Counsel reviewing 2006)
- * Work-Life Committee Re: Spousal Accommodations, New Faculty Transitions, Maternity/Family Leave (Possible Manual revisions - September 2007) - Work-Life II Committee implemented July 2008
- * Review University Policies Regarding Plagiarism and Academic Integrity (TILT Task Force -2007)
- * Revisions to Section J Re: Student Intellectual Property Rights (forthcoming from General Counsel June 2009)
- * Revisions to Section J Re: Royalty Distributions (January 2009)
- * Possible Revisions to Section J regarding "equity distributions" from spin off companies (1/09)
- * General Catalog Revisions regarding "FERPA" Policy (2009)

8

To Faculty Council Members: Your critical study of these minutes is requested. If you find errors, please contact Diane Maybon, at 1-5693 or dmaybon@colostate.edu.

NOTE: Final revisions are noted in the following manner: additions underlined; deletions ~~over-scored~~.

**MINUTES
FACULTY COUNCIL
December 6, 2011**

CALL TO ORDER

The Faculty Council meeting was called to order at 4:00 p.m. by Timothy Gallagher, Chair.

ANNOUNCEMENTS

- A. Next Faculty Council Meeting - February 7, 2012 - A102 Clark Building - 4:00 p.m.
Gallagher announced that the next Faculty Council meeting will be held on Tuesday, February 7, 2012 in Room A102 Clark Building. The meeting will begin at 4:00 p.m.
- B. Nominations for Faculty Council Chair, Vice Chair, and Board of Governors Faculty Representative - Committee on Faculty Governance
Gallagher announced that nominations for Faculty Council Chair, Vice Chair, and Board of Governors Faculty Representative are currently being accepted. The election for Faculty Council officers will take place at the March 7, 2012 Faculty Council meeting. Gallagher noted that Karrin Anderson will not run for a second term as Vice Chair.
- C. Executive Committee Meeting Minutes - October 18, and November 8, 2011
Gallagher noted that the Executive Committee meeting minutes for October 18 and November 8, 2011 can be found on the Faculty Council website.

MINUTES TO BE APPROVED

- A. Faculty Council Meeting Minutes - November 1, 2011
By unanimous consent, the November 1, 2011 Faculty Council Meeting Minutes were approved.

REPORTS TO BE RECEIVED

- A. Provost/Executive Vice President
Rick Miranda, Provost/Executive Vice President reported that he visited Natural Sciences and Natural Resources executive committees last month. He added, that in the spring, he may plan some visits to departments.
Miranda reported that since the last Faculty Council meeting, there was a print-making event where students spoke with veterans and made art as a result of those conversations. He added that Colorado State University has been getting attention locally and nationally for welcoming veterans and integrating them into campus.
Miranda reported that the Department of Music, Theatre, and Dance had an accreditation visit last month. The visit went very well.
Miranda reported that he is in contract negotiations with one of the candidates for the College of Veterinary Medicine and Biomedical Sciences Dean position.

Miranda reported that he has been traveling quite a bit in the last month. He attended the National Governors' Association policy workshop on university accountability measures. The Department of Higher Education and the Colorado Commission on Higher Education is designing performance contracts at the state level. Miranda explained that this workshop was an opportunity to educate ourselves on performance metric best practices. He noted that the Department of Higher Education and the Colorado Commission on Higher Education also got one step closer to ratifying the preliminary goals for the higher education strategic plan.

Miranda reported that conversations are continuing with INTO. He explained that INTO representatives have visited Colorado State University, and Colorado State University representatives visited Oregon State. In addition, the working groups are continuing their work. Miranda reported that he led a delegation to London last month and noted there will be more regarding this trip during the discussion. Miranda stated that, at today's Board of Governors meeting, he briefed the Board of Governors Academic Affairs Committee regarding INTO. He added that at tomorrow's Board of Governors meeting he will brief the Board of Governors.

Mary Van Buren asked if the University of Colorado is bound by the State performance contracts and, in addition, how is the money divided? Miranda responded that the University of Colorado is also bound by the performance contracts. Miranda explained further that Colorado State University can compete well for resources but, pointed out that, none of this is going happen until the State higher education budget is restored to at least \$700 million which, at this time, is unlikely. Miranda added that, of course, legislation could be introduced at any time that could change the way performance contracts are handled.

Miranda's report was received.

B. Faculty Council Chair

Gallagher reported that the Board of Governors' Chancellor Search Advisory Committee sought feedback regarding the position description, and the timeline for this feedback was such that it precluded bringing it to Faculty Council. Executive Committee met on November 29 and prepared feedback for the Board of Governors. Gallagher pointed out that the document that was sent from Executive Committee to the Board of Governors regarding this issue can be found on the Faculty Council website. Gallagher shared some highlights from that report noting that Executive Committee listed concerns related to hiring a separate chancellor at this point. Gallagher explained the main concern was about the chancellor being overly involved with business that is more properly under the purview of the campus presidents. Secondly, the original rationale for a chancellor was to have a figure who could secure funding and maintain an active presence at the State Capitol. However, Gallagher noted that since there are no new resources to be had from the State, the urgency for the chancellor position is mitigated. Gallagher explained that the Executive Committee did not act on behalf of Faculty Council. The recommendations came from Executive Committee. Gallagher noted that interested faculty members are encouraged to review the documents prepared by Executive Committee.

Gallagher reported that Executive Committee is considering bringing a resolution regarding faculty raises to the floor of Faculty Council early next spring. He added that the Committee on Strategic and Financial Planning will be involved in this process.

Gallagher reported that, on the February Faculty Council agenda, there will be a discussion of the curriculum process where members from the University Curriculum Committee can explain the constraints under which they operate, and members of the faculty will be invited to share their curriculum approval perspectives/experiences with the members of the University Curriculum Committee.

Gallagher noted that Carole Makela, Faculty Representative to the Board of Governors, has asked to report today regarding information from the Board of Governors meeting held today.

Makela reported that items that were considered in the Academic Affairs Committee today will go to the Board of Governors for action tomorrow. Makela stated that she is sharing news so that it comes to the Faculty Council members sooner than the February Faculty Council meeting. Makela reported on the following issues:

- a. The Presidents of the three institutions recapped individual budgets. Makela reminded Faculty Council members that budget hearings will be held on campus on January 25. She added that the bonding plans were discussed for the Student Center, the renovation of the Animal Sciences and Engineering buildings, and the construction of the Academic Village. Makela reported that Colorado State University will maintain its bond rating of 125 percent of debt service.
- b. Makela reported that Colorado State University-Global has repaid another \$3 million of its loan to the System Office, bringing the total repayment to \$7 million. She added that Colorado State University-Global's enrollments and revenues are above expectations. In addition, they have had some new degree programs approved by Colorado Commission on Higher Education but the Higher Learning Commission is looking at online programs closely, so the Higher Learning Commission will be visiting Colorado State University-Global to evaluate these degree programs.
- c. Makela reported that President Frank presented to the Board of Governors Academic Affairs Committee a plan to renovate Moby Arena. This is expected to cost approximately \$4.5 million with \$1 million coming from Colorado State University-Global's repayment, plus up to \$3 million from beyond budget enrollment growth, and \$0.5 million from private donors. This funding would form the foundation for going to donors to secure funds for the phase 2 renovation of Moby Arena.
- d. Makela reported that the proposed Sabbatical Leaves for faculty members are moving forward to be heard by the Board of Governors at its meeting tomorrow.

Miranda made some additional comments related to Makela's report. He noted that the budget hearings will be held over two days - January 25 and 26. He told Faculty Council members that an agenda will be published so faculty members can decide when you want to show up. On January 18, from 8:00 a.m. to 12:00 noon, the annual SPARKfest will be held. At this time all six SPARKs will present their revised strategic plans.

Miranda also reported that the Academic Affairs Committee will be forwarding a new peer list to the BOG for approval. Miranda explained that two different peer lists have been in use - one for the Board of Governors and one for the Colorado Commission on Higher Education. If the Board of Governors approve the new peer list, a common list of peer institutions will be used by the Board of Governors and the Colorado Commission on Higher Education.

Gallagher reported that the Academic Affairs Committee also reviewed the proposed Manual Preface revisions and this proposed will be presented to the Board of Governors for action at its meeting tomorrow.

Gallagher's report was received.

Consent Agenda

- A. Changes in Curriculum to be Approved: University Curriculum Committee Minutes: October 14, 21, and 28, 2010

Howard Ramsdell, Chair, University Curriculum Committee, moved that Faculty Council approve the consent agenda.

Ramsdell's motion was adopted.

Action Items

- A. Request for a New Plan C Master of Professional Natural Sciences - University Curriculum Committee
- Ramsdell, Chair, University Curriculum Committee, moved that Faculty Council approve the request for a new Plan C Master's program Master of Professional Natural Sciences to be established in the College of Natural Sciences effective Fall Semester 2012.

Ramsdell explained that the Master of Professional Natural Sciences degree programs are intended to qualify for designation as "Professional Science Master's" programs by the Council of Graduate Schools. Such degree programs combine training in a scientific discipline with relevant course work in workplace skills, such as management, communication and regulatory affairs. The goal is to prepare students for jobs in science- and technology-based industries by providing them with enhanced scientific knowledge and the professional skills sought by employers. The program will be administered by the College of Natural Sciences. The request was reviewed and approved by the University Curriculum Committee on September 30, 2011.

Discipline-specific specializations within the Master of Professional Natural Sciences degree will be developed to meet industry needs. A request for a Specialization in Zoo, Aquarium and Animal Shelter Management was approved by the University Curriculum Committee on October 28, 2011. A copy of that program, to be adopted by Faculty Council as part of the Consent Agenda is included in the support materials.

Miguel Mostafa noted that in the consent agenda, there were some major changes in curriculum regarding this program. He asked that, in the future, a rationale for those changes could be provided. Ramsdell responded that this information is in the form that is submitted to the Catalog Office. He added that he could make this form available to him. Ramsdell added that he would be concerned about the impact on the support staff in the Catalog Office asking them to type a rationale for every change. Ramsdell added that, perhaps, this would be less of a burden in the future once these forms become electronic. Ramsdell pointed out that the Consent Agenda items are consent and if there are concerns, issues can be removed from the Consent Agenda to be acted upon later. Mostafa responded that he agreed, but added that he cannot understand what all these changes mean. Ramsdell responded that the University Curriculum Committee will consider this issue at the next meeting when procedural issues are discussed.

Ramsdell's motion was adopted.

Discussion Item

A. INTO - Discuss Committee Reports - Rick Miranda, Provost/Executive Vice President

Gallagher noted that a delegation recently visited the United Kingdom to participate in site visits and meeting with INTO academic personnel. Faculty members invited to go to the United Kingdom were Pattie Cowell, Louanne Reid, Alexandra Bernesek, and Sanjay Ramchander. Gallagher invited Cowell, Reid, Bernesek and Ramchander to report on their visit to the United Kingdom regarding INTO.

Pattie Cowell distributed a written report that included observations from recent meetings and site visits with INTO. The distributed report is as follows:

Report from Visits to INTO Sites in the UK

Faculty and administrative representatives from CSU visited three INTO university partnerships November 28 through December 1. We spoke with faculty, students, and INTO officers and staff to ascertain how the partnerships work in the UK for all of these stakeholders. From our research, we better understand the operations of an INTO partnership. Below, we have listed our findings and interpretations as well as a list of considerations that need to be monitored and managed. We have organized the report to answer questions faculty have raised throughout the discussions about INTO during fall 2011.

This report was prepared by Alexandra Bernesek (Professor of Economics), Pattie Cowell (Associate Dean of Liberal Arts), Sanjay Ramchander (Professor and Chair of Finance and Real Estate), and Louann Reid (Professor and Chair of English).

INTO

Many INTO officers have academic credentials, several with ESL and teacher preparation specialties.

The company was formed in part out of a request from faculty and administrators at University of East Anglia, who wanted to internationalize their campus.

INTO utilizes a public-private partnership model that allows universities to unbundle student recruitment, global marketing, and brand-building efforts from core academic operations

INTO provides valuable information to students in an increasingly crowded educational marketplace

They customize what they offer, at least to some extent, to the university partner.

They operate on a financial model that makes feasible the recruitment and progression of international students in large numbers, returning revenue to both INTO and the university.

There is an INTO charitable foundation, although we did not have time to learn much about it.

Although there have been some frustrations regarding information flow to this point, we were pleasantly surprised to find that this was not the case on our visit. Faculty and staff at the University of Exeter and the University of East Anglia shared extensive, confidential data about student progression and countries of origin. The director of the English language program at one university even offered free access to a teacher training course he has designed. When we said we wanted opportunities to discuss academic issues, staff at the INTO center in London rearranged the agenda, called in additional people to talk with us, and answered every question we asked. At the two campuses, we were encouraged to talk to any students and faculty members we wished to.

Quality Assurance

Student quality is assured

Admissions standards are determined by the university.

Pathways curriculum is determined by the university, and all courses are approved by the university.

Requirements for progression into university degrees are set by the university.

Students are supported by INTO and the university during the pathways program and beyond with extra tutoring and monitoring/mentoring for attendance and issues that affect personal and academic success.

Staff quality is assured

Qualifications are determined by CSU.

Though INTO Center staff in the UK are INTO employees, employees at CSU can be university employees, selected and evaluated according to university standards.

Accreditation assures ongoing attention to quality

CSU is working hard to maintain accreditation for the Intensive English Program program review

National accreditation for the university.

Standards

Standards for curriculum and students are maintained because they are set by the university.

Courses in the Pathways are not remedial courses. They are university courses, offered to students with added support, especially English language training.

The university sets the pass rate for courses, for completion of the Pathway, and for progression into university degrees.

For years, there have been discussions at CSU about raising our TOEFL direct admit score from 71 to something higher, such as 79. Should we do so, we will bring all international students up to a higher standard, including direct admits and Pathways students.

Academic/Business Partnerships

Partnerships offer advantages to universities with internationalization goals, primarily by allowing academic and business sides to better do what they each do best.

Shared marketing.

Recruitment.

Serve as intermediary between burgeoning international student demand for education at a U.S. university and university desires to internationalize their campuses.

Reduce operational risk by not having to directly deal with multiple agents.

Agents

INTO monitors the performance of the agencies with whom they work.

INTO is an established organization with long-term relationships with agencies and the agents within them.

INTO creates a commission structure that incentivizes agents to recruit only those students likely to succeed. Part of the commission is paid when the student enrolls in the university as a non-degree seeking student. The rest of the commission is paid only when the student progresses to a university degree program. Agents do not receive the full commission for students who do not progress.

Because of the network, INTO can identify problems quickly and inform all universities. For example, if fraud is suspected in one site and INTO finds that the students have been recruited by one agent, they have notified all universities to look for problems with students recruited by that agent. Additionally, they have fired agents who are not meeting their performance standards.

Internationalization goals for CSU

The universities we visited have ambitious internationalization goals. As a result, they are developing or have developed a global reputation. At the University of Exeter, about 25% of the students are not from the UK or an EU country such as France or Germany (there's an agreement in the UK by which students from EU countries are counted as domestic). At the University of East Anglia, 20% to 25% of students are international. Faculty and staff at all three sites we visited identified shared interests and a number of ways in addition to student recruitment in which the INTO network could help us achieve our internationalization goals.

Enable existing study abroad and exchange programs.

Set up new study abroad.

Establish new international research collaborations for faculty and students such as the current water resources project between Exeter and the University of South Florida.

Set up new faculty exchanges.

Set up new student exchanges.

Issues that need to be monitored and managed

Pathway mayhem – pathway programs and progression requirements need to be clearly articulated
- where are these students going after their pathway year,

Foresee problems with rapid growth.

May need to be ready for faculty to see insufficient student preparation.

Value proposition may decrease as INTO adds more US schools – need to ensure exclusivity,

Need to maximize progression and retention.

We may need to search regionally and nationally for qualified faculty.

Resource allocation should accompany capacity expansion and growth objectives
Plan and prepare for growth.

Institute feedback mechanisms to improve pathway experience for students.

Create tracking mechanisms for students going through the pathway program.

Reorganize administrative chart that ensures efficient communication lines across various units and integration with existing programs.

Cowell reported that she has found two things reassuring in the conversations at these recent meetings:

1. INTO's recruiting practices seem to be quite reputable and responsible. Cowell explained that there are built-in incentives for the INTO recruiters to recruit students who will be successful because some of their money will come only after students successfully matriculate into Colorado State University.
2. Cowell pointed out that she has been reassured about the success of the English acquisition programs in the INTO model.

Louann Reid stated that before her visit to the United Kingdom she was extremely skeptical especially in terms of hidden costs for departments, value to students, etc. She said that she came back "guardedly enthusiastic." In part, because some earlier meetings with INTO representatives prior to the visit to the United Kingdom, had been overly controlled by INTO personnel. She reported that when they arrived, it was noted that the agenda prepared for the visit had left out some key pieces, especially discussions with faculty and students. Reid said that within an hour, the agenda was re-arranged and data about progression rates, student success, etc. was addressed. In addition, the INTO staff talked more explicitly about academic impacts as larger numbers of international students come on campus. Reid added that there was a lot of data provided, many questions answered, etc. She added that everyone at INTO was very responsive and had good answers.

Alexandra Bernasek noted that she went on this site visit as a regular faculty member and explained that her interest was regarding the academic side. Bernasek said it was interesting for the delegation to see how things operate in the United Kingdom. Bernasek stated that the programs at Colorado State University will operate differently, but she was able to see how INTO might operate at Colorado State University. At each institution that was visited, the university set the standards, curriculum, progression, and evaluation standards, etc. She pointed out that a faculty member at East Anglia said the faculty do not feel pressured to push students through. It was noted that students who were not going to class, were not doing well, had any academic misconduct, etc. were simply sent home. Bernasek added that the recruiters' incentives were aligned with INTO's incentives, which were also aligned with the university's incentives. Bernasek said she had all of her concerns addressed and felt like Colorado State University might actually be able to help these students succeed and our campus would benefit both financially and in other ways as well. Bernasek thought this would be a unique opportunity for students, etc. at Colorado State University.

Sanjay Ramchander stated that he approached this process agnostically at the outside. Ramchander said that, in addition to echoing what has been said, he was very impressed by INTO's business model. Ramchander explained that INTO provides credible information to students researching options for education abroad. Ramchander added that education in the United Kingdom is very different than it is in the United States, and seeing those campuses helped him to think outside the box. Ramchander added that, as residents of Colorado, we could be in for an education ourselves with an influx of international students. He noted that there is evidence to suggest that this could be very positive from a faculty/student perspective.

Dana Hoag said that he is convinced that the INTO operational model is sound. However, he still wonders, why Colorado State University wants to do this? He added that no one can argue that increased diversity is a good thing, but asked if Colorado State University has the capacity or will Colorado State University's students have to compete with INTO students?

Miranda responded that the question of incorporating an additional population of INTO students is ongoing. He asked that faculty remember that these INTO students will be bringing financial resources with them, and the administration is committed to putting these resources back into the Pathways program the first year. After that, however, those resources will be distributed to the campus as a whole. So, this is viewed as revenue positive, not revenue neutral.

Reid asked that the Faculty Council members note the academic pros on page three (3) of the report distributed. She specifically noted the third bullet: "Establish new international research collaborations for faculty and students such as the current water resources project between Exeter and the University of South Florida."

Bernasek noted that in another meeting, Kari Anderson noted that public institutions are strapped for money and resources are not increasing. Bernasek explained that Colorado State University needs to look for models for paying for public education in a way that benefits the citizens of the State of Colorado. If there are international students who can pay, then Colorado State University may be able to stave off more tuition increases for the in-state students.

John Harton, Chair Department of Physics, noted that his question was along the same lines. He explained that in Department of Physics he is dealing with fitting students into sections. Who will get the last seat in a section - an INTO student or the student from Lamar, Colorado. Miranda said that the University hopes that the population will be large enough to open new sections. He added that this is the University's intention, so that the new sections would benefit INTO students and in-state students. Miranda added that there will be no registration distinction that identifies students as INTO students once they exit the Pathways program.

Ramchander explained that once the INTO students matriculate into the University they become Colorado State University students just as the current students from out of state.

Miranda stated that he had prepared three slides that might generate more questions and might answer more questions.

Miranda noted the following:

The INTO Opportunity

Challenge: Our undergraduate international student population is small.

Opportunity: The demand for U.S. Higher Education is strong and likely to grow.

Colorado State University has had limited ability to recruit and market itself globally.

INTO offers a path to internationalize our student body (undergraduate and graduate), to enhance the global profile of Colorado State University, and to provide a significant additional revenue stream to the campus.

INTO shares our philosophy of high academic standards, and an attention to student support and success.

Principles for Our Partnership

The INTO program must pay for itself.

And More.

The quality of the recruited students must be high.

Colorado State University will retain control of its admissions decisions.

Colorado State University will retain control of all curricula and instructional staff.

Colorado State University will retain its CEA accreditation for the Intensive English Program.

Our goal is to accelerate the internationalization of Colorado State University, and to raise the global profile of Colorado State University as a University where student can succeed.

Miranda then presented a draft INTO-CSU Organizational Chart. Miranda explained how this might be implemented at Colorado State University and added that this is a newly developed organization chart that is currently under discussion.

Phil Chapman asked that Miranda explained what INTO's commission structure is and if INTO will be steering students into different schools based on incentives? In addition, how will this impact international recruiting at Colorado State University outside of INTO?

Miranda answered that the incentive is a fraction of tuition - about 10 percent, but the differences are small enough so as not to trump the priorities/interest of the INTO students and family. It is similar to the differences between institutions that out of state students find when they research institutions. We will still be recruiting internationally through the institution, especially those whose language skills are such that they do not need the Pathways program.

Patricia Ryan asked if there will be institutions regionally competing with us? Miranda answered that there will be specific language in the INTO contract that will keep Colorado and Wyoming exclusive in perpetuity.

Jim McCambridge asked if the length of the contract is 30 or ten years? Miranda responded that the institution is still looking at a ten year contract with the option to renew, revise, or sever at ten years.

Mary Vogl stated that the University should keep in mind the large picture details - how many students, and how much total money is involved? Miranda replied that there are three ways the University sends money back to INTO:

1. Fixed price for marketing.
Agent commissions.
INTO's percentage of tuition (around 6%).

Miranda added that the rest of the money comes back to the joint venture to pay bills on campus and back to the general fund. He explained that if the University has 100 students paying out of state tuition, that is equates to \$2 million. This multiplies into eight figures when they stay at the University for four years.

Mostafa noted that he has read the work of the working groups regarding the start up money we need and asked what is the initial budget for INTO. Miranda explained that the University of South Florida and Oregon State put up \$1million initially and INTO matches that. He said that this amount is what is planned for the University's working capital to launch the INTO program. Miranda stated that at Oregon State, they broke even in the second year, which was better than what their business plan anticipated.

Matthew Malcolm stated that one of the ways the University retains good students is through research assistantships. He added that doing that is a good practice, as is getting extra tuition. Malcolm explained that many faculty members have to fund out of state graduate student tuition to retain these students. He asked how can the University limit the strain on faculty members to cover assistantships, especially those that are offered to retain a high quality international student and how can the University ensure that these students can afford to stay and work here.

Miranda stated that this concern is mostly at the graduate level. He explained that INTO can recruit graduate students, but they will not likely be Ph.D. students who have assistantships for this very reason. Miranda added that it may be the case that a revenue stream such as this could allow the University to make progress in covering the costs of international Ph.D. students.

C. W. Miller asked if the ASCSU students have been involved in the working groups and, if so, what is their opinion? Miranda answered that the ASCSU students have not been involved in the working groups.

Mostafa asked when the first group of INTO students are expected to come to the University? Miranda responded by the Fall semester 2012.

Ryan asked if there is an automatic matriculation for INTO students into graduate programs? Miranda answered that there is no automatic matriculation for INTO students at any stage.

Don Radford asked what the data says regarding likely majors? Miranda responded that Business would be about 40 percent, Engineering about 20 percent, and the remainder to other majors.

Miranda reported that tomorrow, the institution will be asking the Board of Governors to authorize President Frank to sign a contract if President Frank decides to sign it. Miranda added that, If the Board of Governors approves anything, it would just be the delegation of authority to President Frank.

The Faculty Council meeting adjourned at 5:35p.m.

Timothy Gallagher, Chair
Karrin Anderson, Vice Chair
Diane L. Maybon, Secretary

ATTENDANCE
BOLD INDICATES PRESENT AT MEETING
UNDERLINE INDICATES ABSENT AT MEETING

Agricultural Sciences

Stephen Koontz
Denny Crews
William Jacobi
Steve Newman
Mary Stromberger, Excused
Dana Hoag
Andrew Norton, Excused

Applied Human Sciences

Molly Eckman
Robert Gotshall
David Sampson
Jenn Matheson
Scott Glick
Matthew Malcolm
Sharon Anderson
Kim Bundy-Fazioli

Business

Margarita Lenk
D. Turk for Stephen Hayne
Patricia Ryan
Jim McCambridge
Dave Gilliland

Engineering

Collette Heald
Brad Reisfeld
Ken Carlson
B. Notaros for Steve Reising
Don Radford
Eric Maloney
Sudeep Pasricha

Liberal Arts

Mary Van Buren
Eleanor Moseman
Andy Merolla
David Mushinski
Louann Reid
Ernesto Sagas
M. Vogl for Jonathan Carlyon
Robert Gudmestad
Cindy Christen
Gary Moody
Idris Hamid, Excused
Ken Berry
Mary Vogl
Eric Aoki
Alex Bernasek

Agricultural and Resource Economics

Animal Sciences
Bioagricultural Sciences & Pest Management
Horticulture & Landscape Architecture
Soil and Crop Sciences
College-at-Large
College-at-Large

Design and Merchandising

Health and Exercise Science
Food Science and Human Nutrition
Human Development and Family Studies
Construction Management
Occupational Therapy
School of Education
School of Social Work

Accounting

Computer Information Systems
Finance and Real Estate
Management
Marketing

Atmospheric Science

Chemical and Biological Engineering
Civil and Environmental Engineering
Electrical and Computer Engineering
Mechanical Engineering
College-at-Large
College-at-Large

Anthropology

Art
Communication Studies
Economics
English
Ethnic Studies
Foreign Languages and Literatures
History
Journalism and Technical Communication
Music, Theater, and Dance
Philosophy
Sociology
College-at-Large
College-at-Large
College-at-Large

Faculty Council Meeting Minutes
December 6, 2011 - Page 12

Natural Resources

Melinda Laituri
K. Huyvaert for Paul Doherty
Mark Paschke
Sven Egenhoff
Stu Cottrell

Natural Sciences

Eric Ross
David Steingraeber
John Wood
Robert France
R. Cavaliere for Iuliana Oprea
Raymond Robinson
Benjamin Clegg
Philip Chapman
Steve Stack
Mike Steger
Miguel Mostafa

Veterinary Medicine & Biomedical Sciences

Scott Earley
Daniel Smeak
John Rosecrance
Robert Jones
Terry Nett
Jeffrey Wilusz
C. W. Miller
Anthony Knight
Susan Kraft
William Hanneman

University Libraries

Nancy Hunter
Louise Feldmann

Officers

Tim Gallagher
Karrin Anderson
Carole Makela
Richard Eykholt
Diane Maybon
Lola Fehr

Ex Officio Voting Members (*Indicates Elected Member of Faculty Council)

Luis Garcia, Chair
Susan LaRue, Chair, Excused
Martin Gelfand, Chair
David Greene, Chair

Mary Stromberger, Chair*, Excused

Ketul Popat, Chair
Tony Maciejewski, Chair
Dan Turk, Chair
Eric Prince, Chair
Howard Ramsdell, Chair

Ex Officio Non-Voting Members

Torsten Eckstein, Chair

Ecosystem Science and Sustainability
Fish, Wildlife, and Conservation Biology
Forest, Rangeland, and Watershed Stewardship
Geosciences
Human Dimensions of Natural Resources

Biochemistry and Molecular Biology

Biology
Chemistry
Computer Science
Mathematics
Physics
Psychology
Statistics
College-at-Large
College-at-Large
College-at-Large

Biomedical Sciences

Clinical Sciences
Environmental & Radiological Health Sciences
Microbiology, Immunology and Pathology
College-at-Large
College-at-Large
College-at-Large
College-at-Large
College-at-Large
College-at-Large

Libraries

At-Large

Chair, Faculty Council
Vice Chair, Faculty Council
BOG Faculty Representative
Immediate Past Chair, Faculty Council
Executive Assistant/Secretary
Parliamentarian

Committee on Faculty Governance
Committee on Intercollegiate Athletics
Committee on Libraries
Committee on Responsibilities & Standing of Academic Faculty
Committee on Scholarship Research and Graduate Education
Committee on Scholastic Standards
Committee on Strategic and Financial Planning
Committee on Teaching and Learning
Committee on University Programs
University Curriculum Committee

Committee on Special and Temporary Faculty

Ex-Officio Non-Elected Non-Voting Members

| | |
|-------------------------------|---|
| Anthony Frank, Excused | President |
| Rick Miranda | Provost/Executive Vice President |
| <u>Brett Anderson</u> | <u>Vice President for Advancement</u> |
| <u>Mary Ontiveros</u> | <u>Vice President for Diversity</u> |
| <u>Lou Swanson</u> | <u>Vice Provost for Engagement/Director of Extension</u> |
| <u>Robin Brown</u> | <u>Vice President for Enrollment and Access</u> |
| Tom Gorell | Vice Provost for Faculty Affairs |
| <u>Jodie Hanzlik</u> | <u>Interim - Vice Provost for Graduate Affairs</u> |
| <u>Patrick Burns</u> | <u>Vice President for Information Technology/Dean Libraries</u> |
| Jim Cooney | Vice Provost for International Affairs |
| <u>Tom Milligan</u> | <u>Vice President Public Affairs</u> |
| <u>Bill Farland</u> | <u>Vice President for Research</u> |
| Blanche M. Hughes | Vice President for Student Affairs |
| Alan Lamborn | Vice Provost for Undergraduate Affairs |
| <u>Amy Parsons</u> | <u>Vice President for University Operations</u> |
| <u>Craig Beyrouty</u> | <u>Dean, College of Agricultural Sciences</u> |
| <u>Jeff McCubbin</u> | <u>Dean, College of Applied Human Sciences</u> |
| <u>Ajay Menon</u> | <u>Executive Dean/Dean, College of Business</u> |
| <u>Sandra Woods</u> | <u>Dean, College of Engineering</u> |
| <u>Ann Gill</u> | <u>Dean, College of Liberal Arts</u> |
| Jan Nerger | Dean, College of Natural Sciences |
| <u>Lance Perryman</u> | <u>Dean, College of Veterinary Medicine and Biomedical Sciences</u> |
| <u>Joyce Berry</u> | <u>Dean, Warner College of Natural Resources</u> |
| David Mornes | Chair, Administrative Professional Council |

Report to Faculty Council

Board of Governors, December 6-7, 2011, Fort Collins

The Board committees met on December 6th, the items considered are noted here with an indication of Board action on December 7th (**approved).

Evaluation Committee—not scheduled to meet—items held over from October.

--1. Revised Board Appointee Evaluation Policy and Procedures (**)—includes System personnel for which the Board has responsibility—and 2) Revised Board Presidential Evaluation Policy and Procedures (**) for which the Chancellor has responsibility in consultation with the Board. 'Faculty and students from each institution shall have opportunity to present their respective group's annual review of the President directly to the Board at the May meeting of the Evaluation Committee.'

Finance Committee

--Received an up-date on state/campuses' budgets for 2012-13 and—CSU's has been shared on campus. Budget hearings will be held here on January 25 and 26.

--Received up-dated report on System debt capacity in view of plans to issue bonds in 2012, projects include the Lory Student Center renovation and expansion --\$65 m; Academic Village North, deconstruct Lory Apartments and construct a facility for 600 students and renovate Durrell Center--\$57m; renovate Animal Sciences \$7.5m (with intent to seek donations for an addition--\$12m); and financing an existing apartment complex at CSU-Pueblo. Plan of Financing was approved by the Board on 12/7, this item has been reported in the press.

--CSU-Global reported on student financial aid (is 52% of revenues) and the importance of assuring that students have the ability to repay their loans for CSU-GC to maintain an acceptable default rate. Students must be active in courses before funds are disbursed and in Jan. 2012 the living expense allowance will be reduced—recognizing that students do not necessarily have a change in living expenses while enrolled. CSU-GC is advising students on financing options and their loan histories and will begin a Financial Literacy Program in July 2012. For July to Dec. 2011, GC has achieved 51% of revenues, expenses are at 50 %, and net profit is at 54%. A payment of \$3m has been made on the loan from the Systems reserves

Real Estate Committee--Proposed renovation/expansion of Moby Arena was presented with Phase I (concourses, new ticket booths, expanded event space, and renovated restrooms, general face lift at \$4.5m--\$1.5m from GC loan repayments, up to \$3m from enrollment growth (one time monies, and donor support (\$1.5m) (**). Phase II estimated at less than \$11m would involve sky boxes on the south end anticipating donor funding.

Audit Committee--Status of 2011-12 Audits indicating a number of reports (which may include recommendations to the audited unit) have been issued and responses are resulting in December reports. The Internal Auditing Office receives and investigates reports received on the compliance reporting hotline (491-5552, online, or via mail).

Student Affairs Committee—Heard reports on veterans' programs and issues from each of the three campuses. Students made meaningful presentations of their campus experiences and made suggestions for program improvements.

Academic Affairs Committee--Reviewed sabbatical leave requests (CSU)(**); emeritus appointments (**), CSU—this is first time special appointment faculty included; CSU-P (**);

-Fall 2011 Graduates (CSU, CSU-P; CSU-GC) (** all);

-Revised peer group lists: CSU—dropped Auburn and Mississippi State, added Michigan State and University of Illinois-Urbana-Champaign, University Colorado Boulder is for internal comparison only (**); CSU-P; and comparison group (CSU –GC)

-Program review schedules (CSU and CSU-P).

-Campus specific items include:

CSU—Preface to the Faculty/Administrative Manual ()**

CSU-P—New programs-- Masters of Science in Engineering (emphases—mechatronics; railroad engineering); Doctor of Nursing Practice (emphases—adult acute care; adult acute care/family; psychiatric-mental health); mission statement (reaffirmation); posthumous degree policy (bachelors)(**all)

Received reports (per Department of Higher Education requirements): Retention; Graduation; Underserved Students; Assessment; Graduate Education; Underrepresented Teacher Candidates; Student achievement per outcomes of licensure, professional, graduate school admission, and other examinations; Workforce and Economic Development.

CCHE master plan goals: Increase degree attainment across CO; Close gaps in degree attainment among students from underserved communities, rural communities, and lower socioeconomic households; Improve outcomes in remedial education by aligning postsecondary admission and remedial policies within the state; Pursue public funding for public higher education institutions, lowering the burden on students'

Board Meeting—December 7th

Chancellor's Report—Identified 2012 System Legislative Program—bill to establish CSU-GC in a separate section of the state statutes similar to CSU and CSU-P and a second bill to clean-up to the statutes on the System (CSUS). Late this same week these were redrafted into one bill.

Indicated work at CSU-P per the leadership transition, academic affairs, financial issues, campus security, and rededication of the Southeast Asia Memorial. Serves on the Governor's Education Leadership Council, the purpose is to make recommendations for long term improvement to education in Colorado. Meetings and follow-up about the Council can be found at Lt. Governor's Garcia website.

Will lead CSUS with the Presidents at the Legislature's Joint Budget Committee Meetings on December 19th. Reported on the status of the Strategic plans of the System and each of three campuses.

Consent Agenda—in addition to the minutes of the October Board meeting and Committee meetings, and the items noted as ** above, the following item from the Academic Affairs Committee was approved--Nondelegable Personnel Actions—primarily leave (LWOP) actions

For CSU: Approved to continue the lease/purchase arrangements for equipment per the line of credit (annual approval required);

Authorized support for President Frank to enter into a contract with INTO 'to establish and operate an international student enterprise'

Naming of the gymnasium and community room in the Early Childhood Center

Informative Items

Introduction of the System's legislative lobbyists

Presentations were made on security and safety at CSU and CSU-P; Penn State events and role of Boards and their members were reviewed and discussed

Chancellor's Advisory Search Committee reported initial draft of position, receipt of input, will be meeting next week with intent to have the position description posted. Chancellor Blake transitions as of 12/31/11 to Special Advisor to the Presidents. Prior to identification of the new Chancellor, the responsibilities will be delegated to the Presidents and System Staff.

February Board Meeting and Retreat, February 7-9 in Pueblo. Tentative agenda items:

Update on legislative/policy developments,
Latest on Joint Budget Committee briefing
Report from the Chancellor Search Advisory Committee

Respectfully submitted,

December 15, 2011
Carole J. Makela
Faculty Representative to the Board

--

MEMORANDUM

DATE: December 13, 2011

TO: Timothy Gallagher, Chair, Faculty Council

FROM: Howard Ramsdell, Chair, University Curriculum Committee

SUBJECT: Proposed Changes in Curriculum – November 11, 18, and December 2, 9, 2011

CURRICULAR REQUESTS – NOVEMBER 11, 2011

° Course is offered for term specified in odd numbered years.

NT-O, offered as nontraditional, online course.

The following curricular requests were approved.

New Courses**Effective Date**

ANTH 532 03(0-0-3). The Culture of Disaster. S. Prerequisite: Graduate student standing.
Study of how the human impacts of disaster and the process of recovery are shaped by cultural as well as structural realities.

Spring Semester 2012

NRRT 601 02(0-0-2). Tourism Quantitative Analysis I. S. Prerequisite: STAT 312; graduate student standing. Offered only as an online course. This is a partial semester course.
Statistical techniques used by researchers to inform and support tourism decision-making. (NT-O)

Spring Semester 2013

[Approved only as a nontraditional online course.]

NRRT 602 02(0-0-2). Tourism Quantitative Analysis II. S. Prerequisite: Graduate student standing. Offered only as an online course. This is a partial semester course.
Explores the domestic and international sources of data and their applications for decision-making in tourism. (NT-O)

Spring Semester 2013

[Approved only as a nontraditional online course.]

NRRT 610 02(0-0-2). Natural Resource Management and Tourism. F. Prerequisite: Graduate student standing. Offered only as an online course. This is a partial semester course.
Connection between the management of tourism resources and the changing conditions of the natural world. (NT-O)

Fall Semester 2012

[Approved only as a nontraditional online course.]

NRRT 615 02(0-0-2). Sustainable Tourism Development Foundations. F. Prerequisite: Graduate student standing. Offered only as an online course. This is a partial semester course.
Theory, practice, history, terminology and issues surrounding sustainable tourism development. (NT-O)

Fall Semester 2012

[Approved only as a nontraditional online course.]

NRRT 625 02(0-0-2). Communication/Conflict Management in Tourism. Spring Semester 2013
 S. Prerequisite: Graduate student standing. Offered only as an online course. This is a partial semester course.
 Negotiation tools for effective organizational communication/conflict management in tourism.
 (NT-O)

[Approved only as a nontraditional online course.]

NRRT 655 02(0-0-2). Tourism Marketing Concepts and Applications. F. Fall Semester 2012
 Prerequisite: Graduate student standing. Offered only as an online course. This is a partial semester course.
 Marketing processes as they apply to travel and tourism. (NT-O)

[Approved only as a nontraditional online course.]

NRRT 662 02(0-0-2). Global Tourism Policy. S. Prerequisite: Graduate student standing. Offered only as an online course. This is a partial semester course. Spring Semester 2013
 Major global policies, trends, and challenges facing the travel and tourism industry.

[Approved only as a nontraditional online course.]

Major Change to Courses

Effective Date

ECE 412 03(3-0-0). Digital Control and Digital Filters, change to: Spring Semester 2013

ECE 412 03(3-0-0). Digital Control and Digital Filters. S. Prerequisite: ECE 411.
 FIR and IIR digital filter design, analog and digital invariance and direct digital control algorithms, hybrid systems analysis. (NT-O)

[Approved as a nontraditional online course.]

ECE 471 03(3-0-0). Semiconductor Devices, change to: Fall Semester 2012

ECE 471 03(3-0-0). Semiconductor Devices. F. Prerequisite: ECE 332 with a C- or better; ECE 342 with a C- or better.
 Semiconductor physics, device fabrication technology, analysis of PN junctions, and bipolar and field-effect transistors. (NT-O)

[Approved as a nontraditional online course.]

°ECE 505 03(3-0-0). Nanostructures: Fundamentals and Applications, change to: Fall Semester 2012

°ECE 505 03(3-0-0). Nanostructures: Fundamentals and Applications. F.
 Prerequisite: ECE 342; PH 353.
 Fundamentals of quantum confinement; nanostructures optical properties; fabrication and characterization. (NT-O)

[Approved as a nontraditional online course.]

ECE 506 03(3-0-0). Optical Interferometry and Laser Metrology, **change to:**

Fall Semester 2012

ECE 506 03(3-0-0). Optical Interferometry and Laser Metrology. F.

Prerequisite: ECE 341; ECE 342; ECE 441.

High resolution metrology techniques utilizing and interferometric sensors using lasers and other light sources. (NT-O)

[Approved as a nontraditional online course.]

ECE 536 03(3-0-0). RF Integrated Circuit Design, **change to:**

Fall Semester 2012

ECE 536 03(3-0-0). RF Integrated Circuit Design. F. Prerequisite: ECE 332.

Design of state-of-the-art ICs for RF applications including CMOS low-noise amplifiers, voltage-controlled oscillators, mixers and power amplifiers. (NT-O)

[Approved as a nontraditional online course.]

ECE 548 03(3-0-0). Microwave Theory and Component Design, **change to:**

Fall Semester 2012

ECE 548 03(3-0-0). Microwave Theory and Component Design. F.

Prerequisite: ECE 342 with a C- or better.

Fundamentals of microwave engineering, components, devices, and measurements. (NT-O)

[Approved as a nontraditional online course.]

ECE 554 03(3-0-0). Computer Architecture, **change to:**

Fall Semester 2012

ECE 554 03(3-0-0). Computer Architecture. F. Prerequisite: CS 470 or ECE 452.

Fundamentals of computer design, multiprocessors and thread-level parallelism, storage systems, and interconnection networks and clusters. (NT-O/V)

[Approved as a nontraditional online course.]

New Curricula

College of Agricultural Sciences
Department of Soil and Crop Sciences
Major in Soil and Crop Sciences
Biomass for Biofuels Concentration

Effective Spring 2012

(The entire program is shown.)

| <u>Course</u> | <u>Title</u> | <u>Cr</u> | <u>AUCC</u> |
|-----------------------|-------------------------------------|-----------|-------------|
| FRESHMAN | | | |
| AGRI 192 | Orientation to Agricultural Systems | 1 | |
| OR | | | |
| AGRI 292 ^P | Transfer Seminar | 1 | |
| BZ 120 | Principles of Plant Biology | 4 | 3A |
| OR | | | |
| LIFE 102 ^P | Attributes of Living Systems | 4 | 3A |
| CHEM 111 ^P | General Chemistry I | 4 | 3A |
| CHEM 112 ^P | General Chemistry Laboratory I | 1 | 3A |
| CO 150 ^P | College Composition | 3 | 1A |
| FSHN 125 | Food and Nutrition in Health | 2 | |
| OR | | | |

| <u>Course</u> | <u>Title</u> | <u>Cr</u> | <u>AUCC</u> |
|--|--|-----------|---------------|
| FSHN 150 | Survey of Human Nutrition | 3 | |
| MATH 117 ^P | College Algebra in Context I | 1 | 1B |
| MATH 118 ^P | College Algebra in Context II | 1 | 1B |
| MATH 124 ^P | Logarithmic and Exponential Functions | 1 | 1B |
| MATH 141 ^P | Calculus in Management Sciences | 3 | 1B |
| OR | | | |
| MATH 155 ^P | Calculus for Biological Scientists I | 4 | 1B |
| PHIL 110 | Logic and Critical Thinking | 3 | 3B |
| SOCR 100 | General Crops | 4 | |
| SPCM 200 | Public Speaking | 3 | 2A |
| TOTAL | | 31-33 | |
| SOPHOMORE | | | |
| AREC 202 ^P | Agricultural and Resource Economics | 3 | 3C |
| AREC 240/ | Issues in Environmental Economics | 3 | 3C |
| ECON 240 | | | |
| HORT 171/ | Environmental Issues in Agriculture | 3 | 3E |
| SOCR 171 | | | |
| JTC 300 ^P | Professional and Technical Communication | 3 | 2B |
| POLS 232 | International Relations | 3 | 3E |
| OR | | | |
| POLS 241 | Comparative Government and Politics | 3 | 3E |
| SOC 100 | General Sociology | 3 | 3C |
| OR | | | |
| SOC 105 | Social Problems | 3 | 3C |
| SOCR 240 ^P | Introductory Soil Science | 4 | |
| <i>Select one course from the following:</i> | | | |
| STAT 201 ^P | General Statistics | 3 | |
| STAT 301 ^P | Introduction to Statistical Methods | 3 | |
| STAT 307 ^P | Introduction to Biostatistics | 3 | |
| | Arts and Humanities ¹ | 3 | 3B |
| | Historical Perspectives ² | 3 | 3D |
| TOTAL | | 31 | |
| JUNIOR | | | |
| <i>Select one course from the following:</i> | | | |
| NR 319 ^P | Geospatial Applications in Natural Resources | 4 | |
| NR 322 | Introduction to Geographic Information Systems | 4 | |
| SOCR 377 ^P | Geographic Information Systems in Agriculture | 3 | |
| POLS 362 ^P | Global Environmental Politics | 3 | |
| SOC 220 | Global Environmental Issues | 3 | |
| OR | | | |
| SOC 364 ^P | Agriculture and Global Society | 3 | |
| SOCR 320 | Forage and Pasture Management | 3 | |
| SOCR 322 ^P | Principles of Microclimatology | 3 | |
| SOCR 350 ^P | Soil Fertility Management | 3 | |
| SOCR 351 ^P | Soil Fertility Laboratory | 1 | |
| SOCR 370 ^P | Irrigation Principles | 2 | |
| SOCR 371 ^P | Irrigation of Field Crops | 1 | |
| | Technical Electives ³ | 6 | |
| TOTAL | | 28-29 | |
| SENIOR | | | |
| BZ 440 ^P | Plant Physiology | 3 | |
| BZ 441 ^P | Plant Physiology Laboratory | 1 | |
| SOCR 421 ^P | Crop and Soil Management Systems II | 4 | 4A, 4B, 4C |
| SOCR 455 ^P | Soil Microbiology | 3 | |
| SOCR 470 ^P | Soil Physics | 3 | |
| SOCR 471 ^P | Soil Physics Laboratory | 1 | |
| SOCR 475 ^P | Global Challenges in Plant and Soil Science | 3 | |

| <u>Course</u> | <u>Title</u> | <u>Cr</u> | <u>AUCC</u> |
|---------------|----------------------------------|-----------|-------------|
| SOCR 487 | Internship | 3 | |
| SOCR 492 | Seminar | 1 | 4A |
| | Technical Electives ³ | 4-7 | |
| | TOTAL | 26-29 | |

PROGRAM TOTAL = 120 credits

^P This course has at least one prerequisite. Check the Courses of Instruction section of the catalog or <http://catalog.colostate.edu/> to see the course prerequisites.

¹ Select from the list of courses in category 3B in the All-University Core Curriculum (AUCC).

² Select from the list of courses in category 3D in the AUCC. ³ Select from department list of technical electives.

Major in Soil and Crop Sciences
Soil Ecology Concentration

Effective Spring 2012

(The entire program is shown.)

| <u>Course</u> | <u>Title</u> | <u>Cr</u> | <u>AUCC</u> |
|--|--|-----------|-------------|
| FRESHMAN | | | |
| AGRI 192 | Orientation to Agricultural Systems | 1 | |
| AREC 202 ^P | Agricultural and Resource Economics | 3 | 3C |
| OR | | | |
| AREC 240/ ECON 240 | Issues in Environmental Economics | 3 | 3C |
| CHEM 111 ^P | General Chemistry I | 4 | 3A |
| CHEM 112 ^P | General Chemistry Laboratory I | 1 | 3A |
| CHEM 113 ^P | General Chemistry II | 3 | |
| CHEM 114 ^P | General Chemistry Laboratory II | 1 | |
| CO 150 ^P | College Composition | 3 | 1A |
| LIFE 102 ^P | Attributes of Living Systems | 4 | 3A |
| OR | | | |
| LIFE 103 ^P | Biology of Organisms—Animals and Plants | 4 | |
| MATH 155 ^P | Calculus for Biological Scientists I | 4 | 1B |
| PHIL 110 | Logic and Critical Thinking | 3 | 3B |
| SOCR 100 | General Crops | 4 | |
| | TOTAL | 31 | |
| SOPHOMORE | | | |
| CHEM 245 ^P | Fundamentals of Organic Chemistry | 4 | |
| CHEM 246 ^P | Fundamentals of Organic Chemistry Laboratory | 1 | |
| GEOL 120 | Exploring Earth: Physical Geology | 3 | 3A |
| GEOL 121 ^P | Introductory Geology Laboratory | 1 | 3A |
| LAND 220 ^P / LIFE 220 ^P | Fundamentals of Ecology | 3 | 3A |
| OR | | | |
| LIFE 320 ^P | Ecology | 3 | |
| PH 121 ^P | General Physics I | 5 | 3A |
| SOCR 240 ^P | Introductory Soil Science | 4 | |
| SPCM 200 | Public Speaking | 3 | 2A |
| <i>Select one from the following:</i> | | | |
| STAT 201 ^P | General Statistics | 3 | |
| STAT 301 ^P | Introduction to Statistical Methods | 3 | |
| STAT 307 ^P | Introduction to Biostatistics | 3 | |
| | Arts and Humanities ¹ | 3 | 3B |
| | TOTAL | 30 | |
| JUNIOR | | | |
| BC 351 ^P | Principles of Biochemistry | 4 | |
| CO 301B ^P | Writing in the Disciplines—Sciences | 3 | 2B |
| OR | | | |

| <u>Course</u> | <u>Title</u> | <u>Cr</u> | <u>AUCC</u> |
|-------------------------------------|--|-----------|---------------|
| JTC 300 ^P | Professional and Technical Communication | 3 | 2B |
| <i>Select one of the following:</i> | | | |
| NR 319 ^P | Geospatial Applications in Natural Resources | 4 | |
| NR 322 | Introduction to Geographic Information Systems | 4 | |
| SOCR 377 ^P | Geographic Information Systems in Agriculture | 3 | |
| SOCR 322 ^P | Principles of Microclimatology | 3 | |
| SOCR 440 | Pedology | 4 | |
| | Global and Cultural Perspectives ² | 3 | 3E |
| | Historical Perspectives ³ | 3 | 3D |
| | Department Electives ⁴ | 6 | |
| | TOTAL | 29-30 | |
| SENIOR | | | |
| SOCR 441 ^P | Soil Ecology | 3 | |
| SOCR 455 ^P | Soil Microbiology | 3 | |
| SOCR 456 ^P | Soil Microbiology Laboratory | 1 | |
| SOCR 421 ^P | Crop and Soil Management Systems II | 4 | 4A, 4B, 4C |
| SOCR 470 ^P | Soil Physics | 3 | |
| SOCR 471 ^P | Soil Physics Laboratory | 1 | |
| SOCR 486 | Practicum | 1-3 | |
| OR | | | |
| SOCR 487 | Internship | 1-3 | |
| SOCR 492 | Seminar | 1 | 4A |
| | Department Electives ⁴ | 10-13 | |
| | TOTAL | 29-30 | |

PROGRAM TOTAL = 120 credits

^P This course has at least one prerequisite. Check the Courses of Instruction section of the catalog or <http://catalog.colostate.edu/> to see the course prerequisites.

¹ Select from the list of courses in category 3B in the AUCC.

² Select from the list of courses in category 3E in the AUCC.

³ Select from the list of courses in category 3D in the AUCC.

⁴ Select from department list of electives.

Request to Offer Experimental Course Third Time

A request by the College of Agricultural Sciences and the College of Engineering to offer AGRI 681A1/ENGR 681A1, Bioenergy Policy, Economics, and Assessment, for a third time was approved for Spring Semester 2012.

Request to Add a Concentration in Biomass for Biofuels

A request by the Department of Soil and Crop Sciences to add a concentration in Biomass for Biofuels to the major in Soil and Crop Sciences was approved. The recommended effective date, subject to approval by Faculty Council, is Spring Semester 2012.

Request to Add a Concentration in Soil Ecology

A request by the Department of Soil and Crop Sciences to add a concentration in Soil Ecology to the major in Soil and Crop Sciences was approved. The recommended effective date, subject to approval by Faculty Council, is Spring Semester 2012.

CURRICULAR REQUESTS – NOVEMBER 18, 2011

° Course is offered for term specified in odd numbered years.

* Course is offered for term specified in even-numbered years.

+Course requires field trips.

NT-C, offered as a nontraditional, correspondence course.

NT-O, offered as nontraditional, online course.

The following curricular requests were approved.

New Courses

Effective Date

+AGRI 601/ENGR 601 03(2-2-0). Bioenergy Technology. F.

Fall Semester 2012

Science and engineering aspects of bioenergy production, including plant biology, fermentation, and biofuel properties. Required field trips.

ECE 466 02(2-0-0). Integrated Lighting Systems. F. Prerequisite: ECE 331 or INTD 330.

Fall Semester 2012

Technical underpinnings of light sources, their associated heat sink fixtures and power electronics drivers.

+ENGR 601/AGRI 601 03(2-2-0). Bioenergy Technology. F.

Fall Semester 2012

Science and engineering aspects of bioenergy production, including plant biology, fermentation, and biofuel properties. Required field trips.

***ERHS 637 Environment, Safety, and Health Management. F.** Prerequisite: ERHS 526.

Fall Semester 2012

Environment, safety, and health management systems for occupational health practitioners; major environmental and DOT regulatory standards and laws.

NRRT 671 02(0-0-2). Strategic Management for Travel and Tourism. S.

Spring Semester 3013

Prerequisite: Graduate standing. Offered only as an online course. This is a partial semester course.

Factors, tools, and techniques for strategic management of a travel and tourism business or organization. (NT-O)

[Approved only as a nontraditional online course.]

NRRT 679A-B 01(0-0-1). Current Topics in Nature-Based Tourism. F, S.

Fall Semester 2012

Prerequisite: Graduate standing. Students will enroll in this course during both the Fall and Spring semesters.

Current topics in nature-based travel and tourism.

A) Fall. B) Spring.

Major Change to Courses

Effective Date

AM 110 03(2-2-0). Apparel and Merchandising Digital Technology, change to:

Summer Semester 2012

AM 110 03(2-2-0). Apparel and Merchandising Digital Technology. F, S.

Prerequisite: None.

Introduction to computer technologies used in apparel and merchandising industries.

CON 235 03(2-2-0). Construction Graphics, **change to:**

Summer Semester 2012

INTD 235 03(2-2-0). Interior Design Technologies. F. Prerequisite: CON 151; INTD 166.

Principles and procedures required in interpreting and producing building site plans, floor plans, elevations, sections, and interior details.

EDHE 590A-J Var [1-3]. Workshop-Student Personnel, **change to:**

Fall Semester 2012

EDHE 590A-M 01(0-0-1). Workshop-Student Personnel. Prerequisite: Enrollment in SAHE program.

A) Admissions. F. B) College union administration. F. C) Housing/auxiliary services. S. D) International programs. F. E) Career services. S. F) Service learning. S. G) Wellness programs. S. H) Advising student groups. F. °J) Access and Opportunity in Higher Education. S (odd years). *K) Leadership and Service in Higher Education. F (even years). *L) Working with Students' Parents and Families. F (even years). °M) Spiritual Dimensions of Student Development. S (odd years).

EDHE 671 03(3-0-0). Higher Education Administration, **change to:**

Spring Semester 2015

EDHE 671 03(3-0-0). Higher Education Administration. F, S, SS.

History, purpose, structure, and role of leadership within the administration of higher education with relevance to present day higher education. (NT-O)

[Approved as a nontraditional online course.]

EDHE 672 02(2-0-0). Ethical and Practical Issues-Student Affairs, **change to:**

Spring Semester 2013

EDHE 672 02(2-0-0). Ethical and Practical Issues—Student Affairs. F, S. Prerequisite: Enrollment in SAHE program.

Ethical principles and standards used in student affairs. (NT-O)

[Approved as a nontraditional online course.]

EDUC 502 03(3-0-0). Human Relations in Education, **change to:**

Fall Semester 2012

EDUC 502 03(3-0-0). Human Relations in Education. F, S. Prerequisite: Bachelor's degree or EDCT 300.

Human relations in an individual's educational, organizational, and social activities as applied to various educational settings. (NT-O)

[Approved as a nontraditional online course.]

EDUC 686A-B Var. Practicum, **change to:**

Spring Semester 2013

EDUC 686A-B Var. Practicum.

A) Administration. Var[1-6]. F, S, SS. (NT-O) B) Urban teaching. Var.

[EDUC 686A approved as a nontraditional online course.]

HDFS 439 03. Administration of Child Care Centers, **change to:**

Summer Semester 2012

HDFS 439 03(3-0-0). Administration of Early Childhood Programs. F, S, SS. Prerequisite: HDFS 310 or PSY 260.

Center administration related to program development and operations, budgeting, state regulations and licensing, and personnel issues. (NT-C)

[Approved as a traditional course.]

MECH 202 03(2-2-0). Engineering Design II, **change to:**

Fall Semester 2012

MECH 202 03(2-2-0). Engineering Design II. S. Prerequisite: MECH 200 with a C or better or concurrent registration; MECH 201 with a C or better.

Engineering design process with emphasis on teamwork, ideation, decision-making, project planning applied to a group design project.

MECH 417 03(2-2-0). Control Systems, **change to:**

Fall Semester 2012

MECH 417 03(3-0-0). Control Systems. F. Prerequisite: MATH 340; MECH 307.

Feedback and forward loop control design and simulation; discrete time and frequency domain methods with implementation considerations.

MECH 463 03(2-2-0). Building Energy Systems, **change to:**

Fall Semester 2012

MECH 463 03(3-0-0). Building Energy Systems. S. Prerequisite: MECH 344.

Comfort, psychrometrics, loads, solar radiation, heating and cooling system design, transport, solar system design, economics.

SOWK 150 03(3-0-0). Introduction to Social Work, **change to:**

Fall Semester 2012

SOWK 150 03(3-0-0). Introduction to Social Work. F, S. Prerequisite: PSY 100 or concurrent registration; SOC 100 or concurrent registration or SOC 105 or concurrent registration.

Introduction to social work; history of social welfare in the U.S.; overview of knowledge, values, skills, practice settings and populations served. (NT-T)

SOWK 233 03(3-0-0). Human Behavior in the Social Environment, **change to:**

Fall Semester 2012

SOWK 233 03(3-0-0). Human Behavior in the Social Environment. F, S. Prerequisite: HDFS 101 or concurrent registration; SOWK 150 or concurrent registration.

Understanding human behavior theory relevant to social work practice.

SOWK 340 03(0-0-3). Generalist Practice-Individuals and Families, **change to:**

Fall Semester 2012

SOWK 340 03(0-0-3). Generalist Practice-Individuals and Families. F, S. Prerequisite: SOWK 286B or concurrent registration; progression into the major.

Knowledge and techniques used in applying the generalist planned change process to individual and family system assessments and interventions.

¹VS 662 03(2-0-1). Applied Research-Planning/Design/Analysis, **change to:**

Summer Semester 2012

VS 562 03(3-0-0). Applied Data Analysis. S. Prerequisite: STAT 301 or STAT 307.

Data management, application and interpretation of statistical analysis, and reporting of results for students in health science fields.

¹Offered every third year.

New Curricula

College of Applied Human Sciences
 Department of Design and Merchandising
 Master of Science in Design and Merchandising
 Apparel and Merchandising Specialization
 Distance Education-Merchandising Option, Plan B

Effective Spring 2012
 CoSRGE 11/3/11

(The entire program is shown.)

| <u>Course</u> | <u>Title</u> | <u>Cr</u> |
|--|--|-----------|
| DM 510 | <u>Consumer Behavior</u> | <u>3</u> |
| DM 520 | <u>Professional Advancement in Merchandising</u> | <u>3</u> |
| DM 530 | <u>Product Design Development and Evaluation</u> | <u>3</u> |
| DM 540 | <u>Promotional Strategies in Merchandising</u> | <u>3</u> |
| DM 550 | <u>Retail Theory and Practices</u> | <u>3</u> |
| DM 610 | <u>Historical and Contemporary Issues in Trade</u> | <u>3</u> |
| DM 620 | <u>International Merchandise Management</u> | <u>3</u> |
| DM 630 ^P | <u>Merchandising Research Methods</u> | <u>3</u> |
| DM 640 | <u>Merchandising Finance</u> | <u>3</u> |
| DM 650 | <u>Strategic Decisions in Merchandising</u> | <u>3</u> |
| DM 698 | <u>Research</u> | <u>3</u> |
| | <u>Elective¹</u> | <u>3</u> |
| <u>PROGRAM TOTAL = 36 credits</u> | | |

^P This course has at least one prerequisite. Check the Courses of Instruction section of the catalog or <http://catalog.colostate.edu/> to see the course prerequisites.

¹ Select elective course(s) with approval of advisor and graduate committee.

Warner College of Natural Resources
 Department of Human Dimensions of Natural Resources
 Master of Tourism Management (Plan C)

Effective Fall 2012
 CoSRGE 11/3/11

(The entire program is shown.)

| <u>Course</u> | <u>Title</u> | <u>Cr</u> |
|---|---|------------------|
| <u>REQUIRED COURSES:</u> | | |
| NRRT 600 | <u>Tourism Industry Concepts and Practices</u> | <u>2</u> |
| NRRT 601 ^P | <u>Quantitative Analysis in Tourism I</u> | <u>2</u> |
| NRRT 602 ^P | <u>Quantitative Analysis in Tourism II</u> | <u>2</u> |
| NRRT 610 | <u>Natural Resource Management and Tourism</u> | <u>2</u> |
| NRRT 615 | <u>Sustainable Tourism Development Foundations</u> | <u>2</u> |
| NRRT 625 | <u>Communication/Conflict Management in Tourism</u> | <u>2</u> |
| NRRT 655 | <u>Tourism Marketing Concepts and Applications</u> | <u>2</u> |
| NRRT 662 | <u>Global Tourism Policy</u> | <u>2</u> |
| NRRT 671 | <u>Strategic Management for Travel and Tourism</u> | <u>2</u> |
| NRRT 679A-B ^P | <u>Current Topics in Nature-Based Tourism</u> | <u>2</u> |
| | <u>TOTAL</u> | <u>20</u> |
| <u>BUSINESS ELECTIVES: (a minimum of 10 credits)²</u> | | |
| ACT 600 ^P | <u>Accounting for Managers.</u> | <u>3</u> |
| BUS 505 ^P | <u>Legal and Ethical Environment of Business</u> | <u>3</u> |
| BUS 601 ^P | <u>Quantitative Business Analysis</u> | <u>2</u> |
| BUS 615 | <u>Accounting Systems</u> | <u>4</u> |
| BUS 620 | <u>Leadership and Teams</u> | <u>2</u> |
| BUS 621 | <u>Strategic Decision Making</u> | <u>2</u> |
| BUS 635 ^P | <u>Business Economics for the World Market</u> | <u>2</u> |
| BUS 655 ^P | <u>Marketing Management</u> | <u>2</u> |
| BUS 656 ^P | <u>Marketing Strategy and Planning</u> | <u>2</u> |

| <u>Course</u> | <u>Title</u> | <u>Cr</u> |
|----------------------|---------------------------------------|-----------|
| BUS 660 ^P | Ethical, Legal, and Regulatory Issues | 2 |
| BUS 665 ^P | MBA Capstone | 4 |
| MGT 610 ^P | Strategic Human Resource Management | 3 |
| MGT 620 | Management | 3 |
| MGT 679 ^P | Principles of Strategic Management | 3 |
| | <u>TOTAL</u> | <u>10</u> |

PROGRAM TOTAL = a minimum of 30 credits

^P This course has at least one prerequisite. Check the Courses of Instruction section of the catalog or <http://catalog.colostate.edu/front/courses-of-instruction.aspx> to see the course prerequisites.

¹ Students take one credit of NRRT 679A-B each of two semesters. This course will require student presence on-campus in a classroom setting during designated periods of each semester.

² Select a minimum of 10 credits from the list of Business Electives with approval of advisor and committee. Other business courses may be taken to satisfy the requirement with approval of advisor and committee.

Major Changes to Curricula

College of Liberal Arts
Department of Music, Theatre, and Dance
Master of Music
~~Instrumental Conducting Option~~
Instrumental Conducting Specialization

Effective Spring 2012
CoSRGE 11/3/11

(The entire program is shown.)

| <u>Course</u> | <u>Title</u> | <u>Cr</u> |
|--|---|-----------|
| <i>Select 10-13 credits from the following:</i> ¹ | | |
| MU 517 ^P | Analytic Techniques I | 2 |
| MU 518 ^P | Analytic Techniques II | 3 |
| MU 569 ^P | Symphonic Literature | 2 |
| | Music History | 3 each |
| <i>Select 9 credits from the following:</i> ¹ | | |
| MU 521 ^P | Junior and Senior High School Music | 3 |
| MU 556 ^P | Advanced Instrumental Conducting and Techniques | 3 |
| MU 695B | Independent Study—Conducting | 1-3 |
| MU 696B | Group Study—Conducting | 1-3 |
| MU 630 ^P | Methods of Music Research | 3 |
| MU 671 ^P | Graduate Recital | 1 |
| MU 672A-V | Applied Music Instruction ¹ | 0-7 |
| MU 696I | Group Study—Performance ¹ | 0-2 |
| | Electives ¹ | 0-5 |

PROGRAM TOTAL = minimum 30 credits

^P This course has at least one prerequisite. Check the Courses of Instruction section of the catalog or <http://catalog.colostate.edu/> to see the course prerequisites.

¹ Specific courses will be approved by the student's graduate committee. Students may be required to take additional course work as determined by diagnostic examinations and/or their graduate committee.

Request to Add a Specialization in Instrumental Conducting

A request by the Department of Music, Theatre, and Dance to add a specialization in Instrumental Conducting to the Master of Music (M.M. degree) was approved. The recommended effective date, subject to approval by Faculty Council, is Spring Semester 2012.

CURRICULAR REQUESTS – DECEMBER 2, 2011

° Course is offered for term specified in odd numbered years.

* Course is offered for term specified in even-numbered years.

+Course requires field trips.

NT-O, offered as nontraditional, online course.

The following curricular requests were approved.

New Courses

Effective Date

AN EQ 100 03(3-0-0). History of Food Animal Agriculture. S. Prerequisite: Non-Animal Science majors with a freshman or sophomore standing.

Spring Semester 2013

History of animal agriculture; understanding of modern agricultural systems.

CIVE 519 03(3-0-0). Irrigation Water Management. F. Prerequisite: CIVE 425.

Fall Semester 2012

Apply soil, plant, water, and atmospheric engineering principles to determine crop water need to sustain agricultural production and the environment. (NT-O)

[Approved as both a new traditional and new nontraditional online course.]

CIVE 532 03(3-0-0). Wells and Pumps. S. Prerequisite: CIVE 423; CIVE 531 or GEOL 452; CHEM 111.

Spring Semester 2013

Well field hydraulics, well drilling methods, well design, aquifer test methods, pumping systems, well maintenance, storage/distribution systems.

E 331 03(3-0-0). Early Women Writers. F, S. Prerequisite: E 276 or E 277.

Fall Semester 2012

Selected women writers from any period before the 20th century.

FSHN 511 03(0-0-3). Maternal and Child Nutrition. SS. Prerequisite: Admission to the GPIdea Program in Dietetics; written permission of instructor.

Summer Semester 2012

Behavioral, physiological and public health issues impacting dietary and nutritional factors that support growth and development. (NT-O)

[Approved as a new nontraditional online-only course.]

Major Change to Courses

Effective Date

CIVE 512 03(3-0-0). Irrigation Systems Design, change to:

Spring Semester 2012

CIVE 512 03(3-0-0). Irrigation Systems Design. F. Prerequisite: CIVE 322 or ENVE 322 or CIVE 425.

Irrigation systems principles and design procedures for operation of sprinkler, trickle, and surface irrigation systems. (NT-O)

[Approved as a nontraditional online course.]

+FW 111 01(.5-1-0). Basic Outdoor Skills in FWCB, change to:

Fall Semester 2012

+FW 111 01(.5-1-0). Basic Outdoor Skills in FWCB. F,S. Prerequisite: May be taken up to 3 times for a maximum of 3 credits.

Basic outdoor skills crucial for FWCB and outdoor novices. History of wildlife conservation and reasons for declining outdoor participation. Required field trips.

HDFS 439 03(3-0-0). Administration of Early Childhood Programs, **change to:** Summer Semester 2012

HDFS 439 03(3-0-0). Administration of Early Childhood Programs. F, S, SS.

Prerequisite: HDFS 310 or PSY 260.

Center administration related to program development and operations, budgeting, state regulations and licensing, and personnel issues. (NT-O)

[Approved as a nontraditional online course. Approved to drop correspondence course format.]

MIP 300 03(3-0-0). General Microbiology, **change to:** Summer Semester 2012

MIP 300 03(3-0-0). General Microbiology. F, S, SS. Prerequisite: BZ110 or BZ 120 or LIFE 102; CHEM 245 or concurrent registration or CHEM 341 or concurrent registration or CHEM 345 or concurrent registration.

Structure, function, development, physiology, and molecular biology of microorganisms emphasizing bacteria. (NT-O)

[Approved as a nontraditional online course.]

SOWK 492 03(3-0-0). Seminar, **change to:** Fall Semester 2012

SOWK 492 03(2-0-1). Seminar. Prerequisite: SOWK 488 or concurrent registration.

Integrates theory with social work core competencies and practice behaviors while in field placement.

°TH 370 03(2-2-0). Design Portfolio and Professional Preparation, **change to:** Fall Semester 2012

***TH 460 03(2-2-0). Design Portfolio and Professional Preparation.** F.

Prerequisite: Theatre major; two of the following: TH 363, TH 364, TH 365, TH 366, TH 367.

Creating effective portfolio and design presentations, hard copy and digital, storyboarding, communicating design concept in collaboration, interviews.

Major Changes to Curricula

College of Natural Sciences

Department of Computer Science

Major in Computer Science

Effective Spring 2012

(The entire program is shown. Deletions are in ~~strikeout~~; additions are in underline.)

| <u>Course</u> | <u>Title</u> | <u>Cr</u> | <u>AUCC</u> |
|--|---|-----------|-------------|
| FRESHMAN | | | |
| CO 150 ^P | College Composition | 3 | 1A |
| CS 160 ^P | Foundations in Programming | 4 | |
| CS 161 ^P | Object-Oriented Problem Solving | 4 | |
| CS 192 ^P | First Year Seminar in Computer Science | 2 | |
| MATH 160 ^P | Calculus for Physical Scientists I ⁺ | 4 | 1B |
| MATH 161 ^P | Calculus for Physical Scientists II | 4 | 1B |
| <i>Select at least two of the following groups from two departments totaling a minimum of 7 credits:</i> | | | |
| BZ 110 | Principles of Animal Biology | 3 | 3A |
| BZ 111 ^P | Animal Biology Laboratory | 1 | 3A |
| OR | | | |
| BZ 120 | Principles of Plant Biology | 4 | 3A |
| OR | | | |

| Course | Title | Cr | AUCC |
|--|---|-----|----------|
| CHEM 107 ^P | Fundamentals of Chemistry | 4 | 3A |
| CHEM 108 ^P | Fundamentals of Chemistry Laboratory | 1 | 3A |
| OR | | | |
| CHEM 111 ^P | General Chemistry I | 4 | 3A |
| CHEM 112 ^P | General Chemistry Laboratory I | 1 | 3A |
| OR | | | |
| GEOL 120 | Exploring Earth: Physical Geology | 3 | 3A |
| GEOL 121 ^P | Introductory Geology Laboratory | 1 | 3A |
| OR | | | |
| LIFE 102 ^P | Attributes of Living Systems | 4 | 3A |
| OR | | | |
| PH 141 ^P | Physics for Scientists and Engineers I | 5 | 3A |
| | | 7 | 3A |
| | | 3 | |
| TOTAL | | 31 | |
| SOPHOMORE | | | |
| CS 200 ^P | Algorithms and Data Structures | 4 | |
| CS 253 ^P | Problem Solving with C++ | 4 | |
| CS 270 ^P | Computer Organization | 4 | |
| MATH 229 ^P | Matrices and Linear Equations | 2 | |
| OR | | | |
| MATH 369 ^P | Linear Algebra | 3 | 4B |
| STAT 301 ^P | Introduction to Statistical Methods | 3 | |
| OR | | | |
| STAT 315 ^P | Statistics for Engineers and Scientists | 3 | |
| Additional communication/Advanced Writing ¹⁴ | | 3 | 2A or 2B |
| Arts/humanities ²⁵ | | 3 | 3B |
| Social/behavioral sciences ³⁶ | | 3 | 3C |
| Electives ² | | 2-3 | |
| TOTAL | | 29 | |
| JUNIOR | | | |
| CS 314 ^P | Software Development Methods | 3 | |
| CS 320 ^P | Algorithms—Theory and Practice | 3 | |
| CS 356 ^P | Systems Security | 3 | |
| CS 370 ^P | System Architecture and Software | 3 | |
| <i>Select a minimum of 5 credits additional science from the list of 3A courses in the freshman year and/or from the following for a total of at least 12 credits:</i> | | | |
| AA 301 ^P | Astrophysics I | 5 | |
| ATS 350 | Introduction to Weather and Climate | 2 | |
| ATS 351 ^P | Introduction to Weather and Climate Laboratory | 1 | |
| BZ 220 ^P | Introduction to Evolution | 3 | |
| CHEM 113 ^P | General Chemistry II | 3 | |
| AND | | | |
| CHEM 114 ^P | General Chemistry Laboratory II | 1 | |
| CIVE 260 ^P | Engineering Mechanics—Statics | 3 | |
| GEOL 154 ^P | Historical and Analytical Geology | 4 | |
| LIFE 201A ^P | Introductory Genetics—Applied, Population, Conservation | 3 | |
| LIFE 201B ^P | Introductory Genetics—Molecular, Immunological, Developmental | 3 | |
| PH 142 ^P | Physics for Scientists and Engineers II | 5 | |
| PSY 352 ^P | Learning and Memory | 3 | |
| SOCR 330 ^P | Principles of Genetics | 3 | |
| SOCR 331 ^P | Genetics Laboratory | 1 | |
| Additional science ⁷ | | 5 | |
| Arts/humanities ²⁵ | | 3 | 3B |
| Global and cultural awareness ⁴⁸ | | 3 | 3E |
| Historical perspectives ⁵⁹ | | 3 | 3D |

| Course | Title | Cr | AUCC |
|--------|---|----|------|
| | Electives ³ | 1 | |
| | Upper division electives ⁶⁺⁰ | 2 | |
| | TOTAL | 29 | |

SENIOR**Group 1-A***Select one course from the following:*

| | | | | |
|----|------------------|--|---|--------|
| CS | 410 ^P | Introduction to Computer Graphics | 4 | 4A, 4C |
| CS | 414 ^P | Object-Oriented Design | 4 | 4A, 4C |
| CS | 440 ^P | Introduction to Artificial Intelligence | 4 | 4A, 4C |
| CS | 451 ^P | Operating Systems | 4 | 4A, 4C |
| CS | 454 ^P | Principles of Programming Languages | 4 | 4A, 4C |
| CS | 455 ^P | <u>Introduction to Distributed Systems</u> | 4 | 4A, 4C |
| CS | 475 ^P | Parallel Programming | 4 | 4A, 4C |

Group IIBuilding foundations Technical Electives⁷⁺⁴

6-9 4B

Group 1-B*Select three courses (not previously taken) from Group 1-A above and/or from the following for a minimum of 12 credits:*

| | | | | |
|-----|--------------------|--|---|----|
| CS | 420 ^P | Introduction to Analysis of Algorithms | 4 | 4C |
| CS | 430 ^P | Database Systems | 4 | 4C |
| CS | 453 ^P | Introduction to Compiler Construction | 4 | 4C |
| CS | 457 ^P | Computer Networks and the Internet | 4 | 4C |
| CS | 460 ^P / | Embedded Systems | 4 | 4C |
| ECE | 460 ^P | | | |
| CS | 470 ^P | Computer Architecture | 4 | 4C |

Capstone experience¹²

12 4C

Electives³

6-9

TOTAL

31

PROGRAM TOTAL = 120 credits

^P This course has at least one prerequisite. Check the Courses of Instruction section of the catalog or <http://catalog.colostate.edu/> to see the course prerequisites.

¹ Precalculus math (MATH 117, MATH 118, MATH 124, MATH 125, MATH 126) are considered review courses, and do not count toward a degree in computer science.

² Choose two courses totaling at least 7 credits (at least one with lab, lab is a separate course in some cases) from two different departments from the following list: BZ 110 and BZ 111, BZ 120, CHEM 107 and CHEM 108, CHEM 111 and CHEM 112, GEOL 120 and GEOL 121, LIFE 102, PH 141.

³ Any course, except IMP math (MATH 117 to MATH 126).

¹⁴ Select one course from the list of courses in category 2B of the AUCC. First-time students entering a college or university before July 1, 2008, may select a course from AUCC category 2A to fulfill this requirement. Select from the list of courses in category 2A or 2B of the All University Core Curriculum (AUCC). First-time students entering a college or university on or after July 1, 2008, must take an advanced writing course (category 2B).

²⁵ Select from the list of courses in category 3B of the AUCC. Only 3 of the 6 credits required for arts and humanities may come from intermediate (L* 200 and L* 201) foreign language courses..

³⁶ Select from the list of courses in category 3C of the AUCC.

⁷ Choose additional science credits for a total of 12 from the approved department list for satisfying category 3A of the AUCC or from the following courses: AA 301, ATS 350, ATS 351, BZ 220, CHEM 113 and CHEM 114, CIVE 260, GEOL 154, LIFE 201A or LIFE 201B, PH 142, PSY 352, SOCR 330, SOCR 331.

⁴⁸ Select from the list of courses in category 3E of the AUCC.

⁵⁹ Select from the list of courses in category 3D of the AUCC.

⁶⁺⁰ Choose two credits of courses numbered 300 or above.

⁷⁺⁴ Select three courses from the CS Department Group II list for a total of 6-9 credits (6 credits if MATH 369 is taken to meet the linear algebra requirement in the Sophomore year).

¹² Select three courses in addition to the course selected for the category 4A requirement from CS 410, CS 414, CS 420, CS 430, CS 440, CS 451, CS 453, CS 457, CS 460/ECE 460, CS 470, and CS 475.

All-University Core Curriculum (AUCC)**Category 4**

A request by the Department of Anthropology to include ANTH 335, Language and Culture, in category 4A of the AUCC for the major in Anthropology was approved. The recommended effective date, subject to approval by Faculty Council, is Fall Semester 2012.

A request by the Department of Anthropology to include ANTH 413, Indigenous Peoples Today, in category 4A of the AUCC for the major in Anthropology was approved. The recommended effective date, subject to approval by Faculty Council, is Fall Semester 2012.

A request by the Department of Anthropology and the Department of Ethnic Studies to include ANTH 414/ETST 414, Development in Indian Country, in category 4A of the AUCC for the major in Anthropology was approved. The recommended effective date, subject to approval by Faculty Council, is Fall Semester 2012.

A request by the Department of Anthropology to include ANTH 446, New Orleans and the Caribbean, in category 4A of the AUCC for the major in Anthropology was approved. The recommended effective date, subject to approval by Faculty Council, is Fall Semester 2012.

Request to Move Interdisciplinary Minor

A request from the College of Liberal Arts to move the administration of the interdisciplinary minor in Religious Studies from the Department of Philosophy to the Department of History was approved. The recommended effective date, subject to approval by Faculty Council, is Fall Semester 2012.

CURRICULAR REQUESTS – DECEMBER 9, 2011

* Course is offered for term specified in even-numbered years.

+Course requires field trips.

NT-T/V, offered as nontraditional, telecourse or video/DVD course.

NT-O, offered as nontraditional, online course.

The following curricular requests were approved.

New Courses

Effective Date

ECE 465 02(2-0-0). Electrical Energy Generation Technologies. S.

Prerequisite: ECE 202.

Various electrical energy generation alternatives. Comparisons based on cost, reliability, availability and environmental impact.

Spring Semester 2013

ETST 413 03(3-0-0). Queer Creative Expressions. F, S. Prerequisite:

None.

Analysis of queer creative expressions within socio-political discourse and cultural works, with an emphasis on critical, queer feminist theory.

Fall Semester 2012

MECH 527 03(3-0-0). Hybrid Electric Vehicle Powertrains. F.

Prerequisite: MECH 307.

Hybrid powertrains and modeling including vehicle dynamics, internal combustion engine, electric motor, energy storage, and control.

Fall Semester 2012

POLS 624 03(3-0-0). Scope and Methods of Political Science. F, S.

Prerequisite: 15 credits hours of upper division (300 level and above) coursework in Political Science.

Graduate survey of the scope of the Political Science discipline and the range of research design and methods used in the discipline.

Summer Semester 2012

Major Change to Courses

Effective Date

ANEQ 330 03(3-0-0). Principles of Animal Breeding, change to:

Spring Semester 2013

ANEQ 330 03(3-0-0). Principles of Animal Breeding. S. Prerequisite: BZ

350 or SOCR 330; 3 credits of 200- to 300- level statistics.

Genetic principles underlying animal improvement; elementary population genetics; heritability; selection response; mating systems; DNA markers.

+CON 469 03(3-0-0). Soils Engineering for Construction Managers, change to:

Fall Semester 2012

CON 469 03(2-0-1). Soils Engineering for Construction Managers. F, S.

Prerequisite: CON 359.

Soil mechanics, foundation engineering, and foundation construction.

[Fieldtrips are no longer required]

CS 533 04(3-2-0). Database Management Systems, change to:

Fall Semester 2012

CS 533 04(3-2-0). Database Management Systems. F. Prerequisite: CS 430.

Theory and implementation of concurrency control, recovery, and query processing as it applies to centralized and distributed systems. (NT-O)

[Approved as a nontraditional online course.]

ECE 452 03(3-0-0). Computer Organization and Architecture, **change to:** Spring Semester 2013

ECE 452 03(3-0-0). Computer Organization and Architecture. S.

Prerequisite: ECE 251 with a C- or better.

CPU design; microarchitecture; data path and control path; pipelining; memory system; I/O system; program optimization by system software/hardware. (NT-O)

[Approved as a nontraditional online course.]

ECE 456 04(3-3-0). Computer Networks, **change to:** Spring Semester 2013

ECE 456 04(3-3-0). Computer Networks. S. Prerequisite: ECE 251; ECE 303/STAT 303; CS 160 or CS 155 and CS 156 and CS 157. Credit not allowed for both ECE 456 and CS 457.

Circuit/packet switching, protocols, LAN/MAN, TCP/IP, error correction, ATM, wireless LANS, mobile networks. (NT-O)

[Approved as a nontraditional online course.]

ECE 561/CS 561 04(3-3-0). Hardware/Software Design of Embedded Systems, **change to:** Fall Semester 2012

ECE 561/CS 561 04(3-3-0). Hardware/Software Design of Embedded Systems. S. Prerequisite: CS 270 or CS 470 or ECE 251 or ECE 452. Credit not allowed for both CS 561 and ECE 561.

Embedded systems design including system level modeling, design space exploration, hardware-software partitioning, high level synthesis. (NT-O, ECE 561 only)

[ECE 561 only approved as a nontraditional online course.]

ECE 562 03(3-0-0). Power Electronics I, **change to:** Fall Semester 2012

ECE 562 03(3-0-0). Power Electronics I. F. Prerequisite: ECE 332 with a C- or better.

Switch mode and resonant converters, control using switch averaged dynamic models, modeling of all circuit components including sources, loads, and switches. (NT-O)

[Approved as a nontraditional online course.]

ECE 563 03(3-0-0). Power Electronics II, **change to:** Spring Semester 2013

ECE 563 03(3-0-0). Power Electronics II. S. Prerequisite: ECE 562.

Electrical energy, processing circuits, lightweight power management, and power conversion circuits, emphasizing small signal transfer functions. (NT-O/V)

[Approved as a nontraditional online course.]

*ECE 569/*MECH 569 03(3-0-0). Micro-Electro-Mechanical Devices, **change to:** Spring Semester 2013

***ECE 569/*MECH 569 03(3-0-0). Micro-Electro-Mechanical Devices.**

S. Prerequisite: ECE 331 with a C- or better or MECH 344. Credit not allowed for both ECE 569 and MECH 569.

Micro-electro-mechanical processes and applications in sensors, optics, and structures. (NT-O)

[Approved as a nontraditional online course.]

EDHE 661 03(3-0-0). Inclusive University, **change to:**

Fall Semester 2013

EDHE 661 03(3-0-0). Inclusive University. F, S. Prerequisite: Enrollment in SAHE program.

Exploration of broad range of human differences and their impact in higher education. (NT-O)

[Approved as a nontraditional online course.]

EDHE 662 02(2-0-0). Trends/Issues/Assessment in Higher Education, **change to:**

Fall Semester 2013

EDHE 662 02(2-0-0). Trends/Issues/Assessment in Higher Education. F, S. Prerequisite: Enrollment in SAHE program.

Assessment and research involving students in collegiate settings. (NT-O)

[Approved as a nontraditional online course.]

EDHE 677 03(3-0-0). Law in Student Affairs, **change to:**

Spring Semester 2015

EDHE 677 03(3-0-0). Law in Student Affairs. F, S. Prerequisite: Enrollment in SAHE program.

Legal issues focusing on sources and application of educational law and responsibilities of higher education administrators. (NT-O)

[Approved as a nontraditional online course.]

EDHE 678 02(2-0-0). Current Issues in Student Affairs, **change to:**

Spring Semester 2013

EDHE 678 02(2-0-0). Capstone in Student Affairs. S, SS. Prerequisite: Enrollment in SAHE program.

Capstone analyzing current issues and leadership in transition to professional roles. (NT-O)

[Approved as a nontraditional online course.]

ETST 371 03(3-0-0). The U.S. and the Caribbean, **change to:**

Fall Semester 2012

ETST 371 03(3-0-0). The Modern Caribbean. F, S. Prerequisite: None.

Modern political and socio-economic developments in the Caribbean with emphasis in race, ethnicity, and gender.

FSHN 698B-C Var. Research, **change to:**

FSHN 698A-C Var. Research.

A) Dietetics. F, SS. Prerequisite: Enrollment in the GPIdea Program in Dietetics. Offered as an online course only. (NT-O) B) Nutrition. F, S, SS. C) Food service management. F, S, SS.

Summer Semester 2012

GES 101 03(3-0-0). Foundations of Environmental Sustainability, **change to:**

Spring Semester 2012

GES 101 03(3-0-0). Foundations of Environmental Sustainability. F, S. Prerequisite: None.

Concepts, foundations, and metrics of global environmental sustainability applied to global challenges. (NT-O)

[Approved as a nontraditional online course.]

HDFS 318 03(0-0-3). Infancy and Toddlerhood, **change to:**

Summer Semester 2012

HDFS 318 03(3-0-0). Infancy and Toddlerhood. F, S, SS. Prerequisite: HDFS 101.

Physical, cognitive, language, and socio-emotional development from pre-birth through 36 months with an emphasis on applied settings. (NT-O)

[Approved as a traditional course.]

*HDFS 404 02(2-0-0). Child Life Theory and Practice, **change to:**

Summer Semester 2012

HDFS 404 02(2-0-0). Child Life Theory and Practice. F, S, SS.

Prerequisite: HDFS 310 or PSY 260.

Theories and skills related to effective child life practice in hospitals. (NT-O)

[Approved as a nontraditional online course.]

*MECH 569/*ECE 569 03(3-0-0). Micro-Electro-Mechanical Devices, **change to:**

Spring Semester 2013

***MECH 569/*ECE 569 03(3-0-0). Micro-Electro-Mechanical Devices.**

S. Prerequisite: ECE 331 with a C- or better or MECH 344. Credit not allowed for both ECE 569 and MECH 569.

Micro-electro-mechanical processes and applications in sensors, optics, and structures. (NT-O)

[Approved as a nontraditional online course.]

SOWK 330 03(3-0-0). Human Diversity Practice Issues, **change to:**

Fall Semester 2012

SOWK 330 03(3-0-0). Human Diversity Practice Issues. F, S.

Prerequisite: SOWK 233 or concurrent registration.

Knowledge about human differences and similarities essential for social work practice.

[Approved substantive content change.]

SOWK 341 03(0-0-3). Generalist Practice-Small Groups, **change to:**

Fall Semester 2012

SOWK 341 03(0-0-3). Generalist Practice-Small Groups. F, S.

Prerequisite: SOWK 340 or concurrent registration.

Within a generalist framework, focuses on the knowledge, skills, and competencies needed for the planned change process in groups.

SOWK 342 03(0-0-3). Generalist Practice-Organizations/Communities, **change to:**

Fall Semester 2012

SOWK 342 03(1-0-2). Generalist Practice-Organizations/ Communities.

F, S. Prerequisite: SOWK 340 or concurrent registration.

Knowledge regarding the planned change process with organizations and communities.

SOWK 410 03(3-0-0). Social Welfare Policy, **change to:**

Fall Semester 2012

SOWK 410 03(2-0-1). Social Welfare Policy. F, S. Prerequisite: SOWK 342 or concurrent registration.

Issues and processes shaping social welfare institutions; definitions of social welfare policy; analytical framework for policy analysis.

SOWK 602A-B 02(0-0-2). Macro-Level Social Work Practice Research,
change to:

Fall Semester 2012

SOWK 602A-B 02(0-0-2). Macro-Level Social Work Practice Research.

A) F. B) S. Prerequisite: Concurrent registration in SOWK 688. A)
SOWK 601. B) SOWK 602A.

Design and implementation of needs assessment, program
implementation, and community research.

Major Changes to Curricula

College of Agricultural Sciences
Department of Animal Sciences
Major in Equine Science

Effective Fall 2012

(Only the changes are shown, not the entire program. Deletions are in ~~strikeout~~; additions are in underline.)

| <u>Course</u> | <u>Title</u> | <u>Cr</u> | <u>AUCC</u> |
|--|--|----------------|-------------|
| SOPHOMORE | | | |
| SOCR 330 ^P | Principles of Genetics | 3 | |
| ANEQ 230 ^P | Farm Animal Anatomy and Physiology | 3 | |
| OR | | | |
| BMS 300 ^P | Principles of Human Physiology | 4 | |
| AREC 202 | Agricultural and Resource Economics | 3 | 3C |
| OR | | | |
| ECON 202 ^P | Principles of Microeconomics | 3 | 3C |
| <i>Select one course from the following:</i> | | | |
| STAT 101^P | Activity Based Statistics | 3 | |
| STAT 110^P | Statistical Thinking: Concepts and Applications | 3 | |
| STAT 201^P | General Statistics | 3 | |
| STAT 204^P | Statistics for Business Students | 3 | |
| STAT 301 ^P | Introduction to Statistical Methods | 3 | |
| OR | | | |
| STAT 307 ^P | Introduction to Biostatistics | 3 | |
| STAT 315^P | Statistics for Engineers and Scientists | 3 | |
| | Arts/humanities ¹ | 3 | 3B |
| | Business electives ³ | 6 | |
| | Electives | 8-11 | |
| | TOTAL | 29-30 | |
| SENIOR | | | |
| ANEQ 346 ^P | Equine Disease Management | 3 4 | |
| ANEQ 440 ^P | Equine Production and Industry | 3 | 4A, 4C |
| ANEQ 441 | Integrated Equine Science | 2 | |
| OR | | | |
| ANEQ 444 | Equine Business Management | 2 | |
| | Applied equine science electives ⁶ | 4 | |
| | Business electives ³ | 3 | |
| | Electives ⁸ | 9-18 | |
| | | 6-15 | |
| | TOTAL | 22-31 | |
| PROGRAM TOTAL = 120 credits | | | |

^P This course has at least one prerequisite. Check the Courses of Instruction section of the catalog or <http://catalog.colostate.edu/> to see the course prerequisites.

¹Select from the list of courses in category 3B in the AUCC. First-time students entering a college or university on or after July 1, 2008, must take an advanced writing course (category 2B).

³ Select a total of 15 credits from any AREC or ECON course or any business course of which 3 credits may be a computer course. Access granted for the following business courses: ACT 205, BUS 205, FIN 305, MGT 305, MKT 305.

⁶ Select eight credits from four courses from the department approved applied course list for equine science majors.

⁸ Enough elective credits must be selected to bring the program total to 120 credits with 42 upper-division credits.

College of Applied Human Sciences
Department of Human Development and Family Studies
Major in Human Development and Family Studies
Teacher Licensure in Early Childhood Education
and Elementary Education Concentration

Effective Summer 2012

(Only the changes are shown, not the entire program. Deletions are in ~~strikeout~~; additions are in underline.)

| <u>Course</u> | <u>Title</u> | <u>Cr</u> | <u>AUCC</u> |
|---------------------------------|---|--------------|-------------|
| SOPHOMORE | | | |
| HDFS 217 ^P | Creative Experiences for Children | 3 | |
| HDFS 277 | <u>Professional Skills Development</u> | <u>1</u> | |
| HDFS 286^P | Practicum-Professional Skills | 4 | |
| HDFS 310 ^P | Infant and Child Development in Context | 3 | |
| HDFS 311 ^P | Adolescent/Early Adult Development in Context | 3 | |
| HDFS 312 ^P | Adult Development-Middle Age and Aging | 3 | |
| <u>HDFS 350^P</u> | <u>Applied Research Methods</u> | <u>3</u> | |
| HDFS 375 ^P | Programming for Children and Families | 3 | |
| STAT 201 ^P | General Statistics | 3 | |
| OR | | | |
| STAT 301 ^P | Introduction to Statistical Methods | 3 | |
| SPCM 200 | Public Speaking | 3 | 2A |
| | Arts/humanities ¹ | 3 | 3B |
| | Global and cultural awareness ⁵ | 3 | 3E |
| | <u>Electives</u> | <u>3</u> | |
| | TOTAL | 31 | |

PROGRAM TOTAL = 120 credits

^P This course has at least one prerequisite. Check the Courses of Instruction section of the catalog or <http://catalog.colostate.edu/> to see the course prerequisites.

¹ Select from departmental list of courses in category 3B in the All-University Core Curriculum (AUCC). Only 3 of the 6 credits required for arts and humanities may come from intermediate (L* 200 and L* 201) foreign language courses.

⁵ Select from departmental list of courses in category 3E in the AUCC.

College of Liberal Arts
Department of Political Science
Major in Political Science

Effective Fall 2012

(The entire program is shown. Deletions are in ~~strikeout~~; additions are in underline.)

| <u>Course</u> | <u>Title</u> | <u>Cr</u> | <u>AUCC</u> |
|---------------------|---|-----------|-------------|
| FRESHMAN | | | |
| CO 150 ^P | College Composition | 3 | 1A |
| POLS 101 | American Government and Politics | 3 | 3C |
| POLS 103 | State and Local Government and Politics | 3 | 3C |
| | Arts/humanities ¹ | 6 | 3B |
| | Biological/physical sciences ² | 4 | 3A |
| | Historical perspectives ³ | 3 | 3D |
| | Mathematics ⁴ | 3 | 1B |
| | Electives | <u>5</u> | |
| | TOTAL | 30 | |

| <u>Course</u> | <u>Title</u> | <u>Cr</u> | <u>AUCC</u> |
|---|--|--------------|-------------|
| SOPHOMORE | | | |
| <i>Select one course from the following:</i> ⁵ | | | |
| CO 300 ^P | Writing Arguments | 3 | 2B |
| CO 301A-D ^P | Writing in the Disciplines | 3 | 2B |
| CO 302 ^P | Writing Online | 3 | 2B |
| JTC 300 ^P | Professional and Technical Communication | 3 | 2B |
| SPCM 200 | Public Speaking | 3 | 2A |
| <i>Select from the following:</i> | | | |
| ECON 101 | Economics of Social Issues | 3 | 3C |
| OR | | | |
| ECON 202 ^P | Principles of Microeconomics ⁶ | 3 | 3C |
| ECON 204 ^P | Principles of Macroeconomics | 3 | 3C |
| POLS 232 | International Relations | 3 | 3E |
| POLS 241 | Comparative Government and Politics | 3 | 3E |
| | Biological/physical sciences ² | 3 | 3A |
| | Political science, upper-division ⁶⁷ | 3 | |
| | Support option ⁷⁸ | 3-6 | |
| | Electives | 6-9 | |
| | | <u>12</u> | |
| | TOTAL | 30-33 | |
| JUNIOR | | | |
| | Political Science—AUCC Categories 4A and/or 4B ^{6, 87, 9} | 0-3 | 4A, 4B |
| | Political science, upper-division ⁶⁷ | 6-9 | |
| | Support option ⁷⁸ | 6-12 | |
| | Electives | 9-12 | |
| | TOTAL | <u>27-30</u> | |
| SENIOR | | | |
| POLS 492 ^P | Capstone Seminar ^{8, 99, 10} | 3 | 4A, 4B, 4C |
| | Political Science—AUCC Categories 4A and/or 4B ^{6, 87, 9} | 0-3 | 4A, 4B |
| | Political science, upper-division ⁶⁷ | 6-9 | 4A, 4B |
| | Support option ⁷⁸ | 6-12 | |
| | Electives ¹⁰¹⁺ | 6-12 | |
| | TOTAL | <u>30</u> | |
| PROGRAM TOTAL = 120 credits | | | |

^P This course has at least one prerequisite. Check the Courses of Instruction section of the catalog or <http://catalog.colostate.edu/> to see the course prerequisites.

¹ Select from the list of courses in category 3B in the All-University Core Curriculum (AUCC). Only 3 of the 6 credits required for arts and humanities may come from intermediate (L* 200 and L* 201) foreign language courses.

² Select a total of seven credits from the list of courses in category 3A in the AUCC. One of the courses selected must have a laboratory component.

³ Select from the list of courses in category 3D in the AUCC.

⁴ Select at least three credits from the list of courses in category 1B in the AUCC.

⁵ First-time students entering a college or university on or after July 1, 2008, must take an advanced writing course (any course in this choice except SPCM 200).

⁶ ECON 202 and ECON 204 should be taken by students who plan to take advanced courses in economics.

⁶⁷ At least 24 credits of upper division political science courses must be completed for the major, including the senior capstone course, POLS 492, and at least one upper-division course in each of the following subfields: American politics and law: POLS 302, POLS 303, POLS 304, POLS 305, POLS 306, POLS 405, POLS 409, POLS 410, POLS 413; Comparative Politics: POLS 341, POLS 345, POLS 444, POLS 445, POLS 446, POLS 447, POLS 448, POLS 449; International Relations: POLS 331, POLS 332, POLS 431, POLS 433, POLS 435, POLS 436, POLS 437; Political Theory: POLS 420, POLS 421, POLS 423; and Public Policy and Administration: POLS 351, POLS 361, POLS 362, POLS 460, POLS 462. Students choosing the Methods support option must take POLS. Credits earned in POLS 495 may not be used to satisfy this requirement. A maximum of three credits earned in POLS 486 may be used to satisfy this requirement.

⁷⁸ Choose from among the following support options:

(1) Foreign language option [15-22 credits] – a minimum of 5 courses totaling at least 15 credits in a single foreign language, including at least 2 courses of language instruction or in the language at the upper-division level.

(2) Methods option [21 credits] – POLS 320 and STAT 301; 6 credits from among PHIL 120, PHIL 327, and PHIL 415; 3 credits from among STAT 305, STAT 340, and STAT 350; 6 credits from among the following: ANTH 441, ECON 335/AREC 335, SOC 210 and SOC 311.

(3) Completion of either a minor or a second major.

(4) An approved program proposed by student containing at least 21 credits including at least 12 upper-division credits.

⁸⁹ Of the 24 credits of upper division (300- to 400-level) political science courses to be completed for the major, a minimum of 3 credits must satisfy categories 4A and 4B of the AUCC (in addition to 3 credits of POLS 492). See department list of courses that have been approved for categories 4A and 4B.

⁹⁺⁰ Students must have completed upper division courses in at least four of the five subfields listed in footnote 7 in order to enroll in POLS 492.

¹⁰⁺¹ Select sufficient elective credits to bring the total program of study to a minimum of 120 credits including a minimum of 42 upper-division credits.

**Warner College of Natural Resources
Department of Forest and Rangeland Stewardship
Major in Natural Resources Management**

Effective Fall 2012

(Only the changes are shown, not the entire program. Deletions are in ~~strikeout~~; additions are in underline.)

| <u>Course</u> | <u>Title</u> | <u>Cr</u> | <u>AUCC</u> |
|---------------------------------|---|--------------|---------------|
| FRESHMAN | | | |
| BZ 110 | Principles of Animal Biology | 3 | 3A |
| BZ 120 | Principles of Plant Biology | 4 | 3A |
| CHEM 107 ^P | Fundamentals of Chemistry | 4 | 3A |
| CHEM 108 ^P | Fundamentals of Chemistry Laboratory | 1 | 3A |
| <u>MATH 117^P</u> | <u>College Algebra in Context I</u> | <u>1</u> | <u>1B</u> |
| <u>MATH 118^P</u> | <u>College Algebra in Context II</u> | <u>1</u> | <u>1B</u> |
| <u>MATH 125^P</u> | <u>Numerical Trigonometry</u> | <u>1</u> | <u>1B</u> |
| MATH 141^P | Calculus in Management Sciences | 3 | 1B |
| OR | | | |
| MATH 155^P | Calculus for Biological Scientists I | 4 | 1B |
| SPCM 200 | Public Speaking | 3 | 2A |
| | Arts/humanities ¹ | 6 | 3B |
| | Global and cultural awareness ² | 3 | 3E |
| | Electives | <u>2-3</u> | |
| | TOTAL | 29-30 | |

PROGRAM TOTAL = 120-121 credits

^P This course has at least one prerequisite. Check the Courses of Instruction section of the catalog or <http://catalog.colostate.edu/> to see the course prerequisites.

¹ Select from the list of courses in category 3B in the All-University Core Curriculum (AUCC). Only 3 of the 6 credits required for arts and humanities may come from intermediate (L* 200 and L* 201) foreign language courses.

² Select from the list of courses in category 3E in the AUCC.

MEMORANDUM

DATE: January 17, 2012
TO: Tim Gallagher, Chair Faculty Council
FROM: Rick Miranda, Provost/Executive Vice President
SUBJECT: Approval of CSU Spring-Summer Degree Candidates - May 2012
Commencement

Rick Miranda, Provost/Executive Vice President, MOVES THAT FACULTY COUNCIL APPROVE THE CANDIDATES WHO MEET THE DEGREE REQUIREMENTS FOR GRADUATION AT THE CLOSE OF THE 2012 SPRING AND SUMMER SEMESTERS.

January 4, 2012

TO: Tim Gallagher, Chair
Executive Committee and Faculty Council

FROM: Howard Ramsdell, Chair
University Curriculum Committee

SUBJECT: New Special Academic Unit

The University Curriculum Committee moves Faculty Council adopt the following:

The Molecular, Cellular and Integrative Neurosciences program shall be established as Special Academic Unit effective Fall Semester 2012.

Rationale:

The Molecular, Cellular and Integrative Neurosciences Program (MCIN) is seeking status as a Special Academic Unit in order to be able to become an interdepartmental degree-granting unit of the university. The MCIN currently offers a Graduate Interdisciplinary Program, with active faculty from ten departments in five colleges. Three to five PhD students accepted annually complete two semesters of neuroscience courses and do experiential lab rotations in three labs that they select from among the MCIN faculty. Students are then matched to a faculty lab and select a departmental Ph.D. program for the completion of their degree.

The present proposal does not include any changes to the existing Graduate Interdisciplinary Program. Recognition as a Special Academic Unit would allow MCIN to offer a graduate or undergraduate major in the future, subject to the curricular review and approval process, as a degree-granting unit under the provisions of Section C.2.2 of the *Academic Faculty and Administrative Professional Manual*, as amended May 3, 2011.

The proposed Code provides for the establishment of an Academic Oversight Committee (AOC) comprised of the Vice Provost for Graduate Affairs and the Deans of the Colleges of Veterinary Medicine and Biomedical Sciences and Natural Sciences. The elected Director of the Program will report to this committee and serve as Chair of the Program's Executive Committee. Curricular proposals approved by the Program's Graduate Academics Committee (GAC) will be reviewed and approved by the Executive

Committee. The Director shall then obtain the endorsement of the AOC before submitting proposals for review and approval through the required University channels. New MCIN program proposals shall be developed following University procedures and shall include consultation with all colleges and departments from which MCIN faculty membership is derived.

According to the MCIN Policies and Procedures document submitted as part of this proposal, MCIN will initiate academic agreements between each participating college and department and individual faculty member detailing expected faculty commitments and duration. The agreement will also describe how MCIN will provide information for performance evaluation by the faculty member's home department.

The request was reviewed and approved by the Committee on Scholarship, Research, & Graduate Education on October 6, 2011 and the University Curriculum Committee on December 2, 2011.

Enclosure

**Molecular, Cellular & Integrative Neuroscience Program**

1617 Campus Delivery
Fort Collins, CO 80523-1617
Voice: 970-491-1553
Fax: 970-491-7907

Dr. Mary Stromberger
Chair, Committee on Scholarship, Research & Graduate Education
Associate Professor, Dept. of Agricultural Sciences

September 27, 2011

Dear Dr. Stromberger and CoSRGE Committee Members,

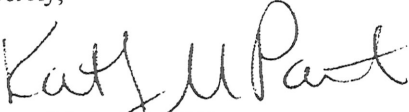
Please accept for your consideration this material from the Molecular, Cellular & Integrative Neurosciences (MCIN) Program, which is looking for your support in their bid to reorganize as a Special Academic Unit (SAU) as specified by Section C.2.8 of the *AP Manual*. MCIN is an interdisciplinary graduate program, with active faculty from 10 departments represented in 5 colleges (CVMBS, CNS, CLA, CAHS and COE). We accept 3-5 incoming PhD students, give them 2 semesters of neuroscience curriculum and allow them to do experiential lab rotations in 3 faculty labs that they have selected from our 26 members. After two semesters, and contingent upon their successful completion of an oral examination, we "match" students to a faculty lab, at which time the student is transferred to another department from which they will then earn their PhD. This has been an extremely successful PRSE for many years. In our quest to reorganize as an SAU we would not propose to make any changes in the graduate program; we would simply have oversight by an Academic Oversight Committee (AOC) composed of the Vice Provost of Graduate Affairs, and the Deans of CVMBS and CNS (***Attachment #1, Organizational Chart***). Currently I report directly to the two Deans, so if they have a differing opinion of any MCIN initiatives, the initiative would be clocked by their single vote against it.

As much as the SAU seems perfect for the existing MCIN structure, our motivation for undertaking the approval process is that the SAU organization would allow MCIN to offer either a graduate or undergraduate major. In fact, there is great interest among the neuroscience community in offering an undergraduate major, which may easily lead to a combined BS/MS program. Of course, this would go through the university approval process and CoSRGE would be consulted if and when that happens. Conversion to an SAU is a necessary step for MCIN to offer a degree-granting program, which is why we are going through this process at this time.

Although ours is probably one of the first SAU applications you will consider, we believe that we have met the conditions required for you to consider it (***Attachment #2, SAU Approval Flow Chart***). That is, we have the endorsement of the Provost (***Attachment #3, Provost's Letter***) and the Vice Provost for Graduate Affairs. We continue to gather the necessary MOUs from the department heads and deans, which we will forward to your committee before we ask for a formal vote. The MCIN faculty approved the requisite Code (***Attachment #4***) and Policy and Procedure Manual (***Attachment #5***).

We would very much appreciate CoSRGE's support of this endeavor.

Sincerely,

A handwritten signature in black ink, appearing to read "Kathryn M. Partin". The signature is fluid and cursive, with the first name "Kathryn" and last name "Partin" being the most legible parts.

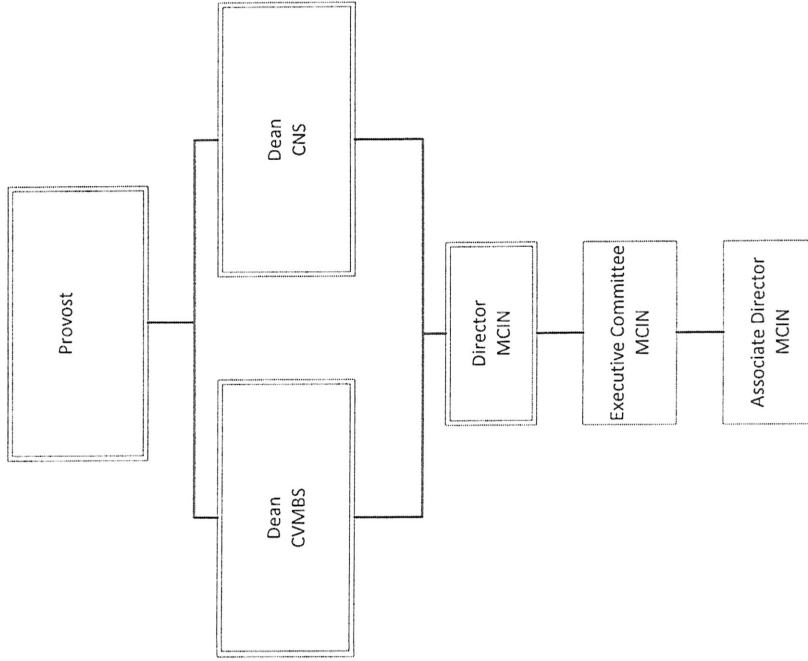
Kathryn M. Partin, PhD

Director, MCIN

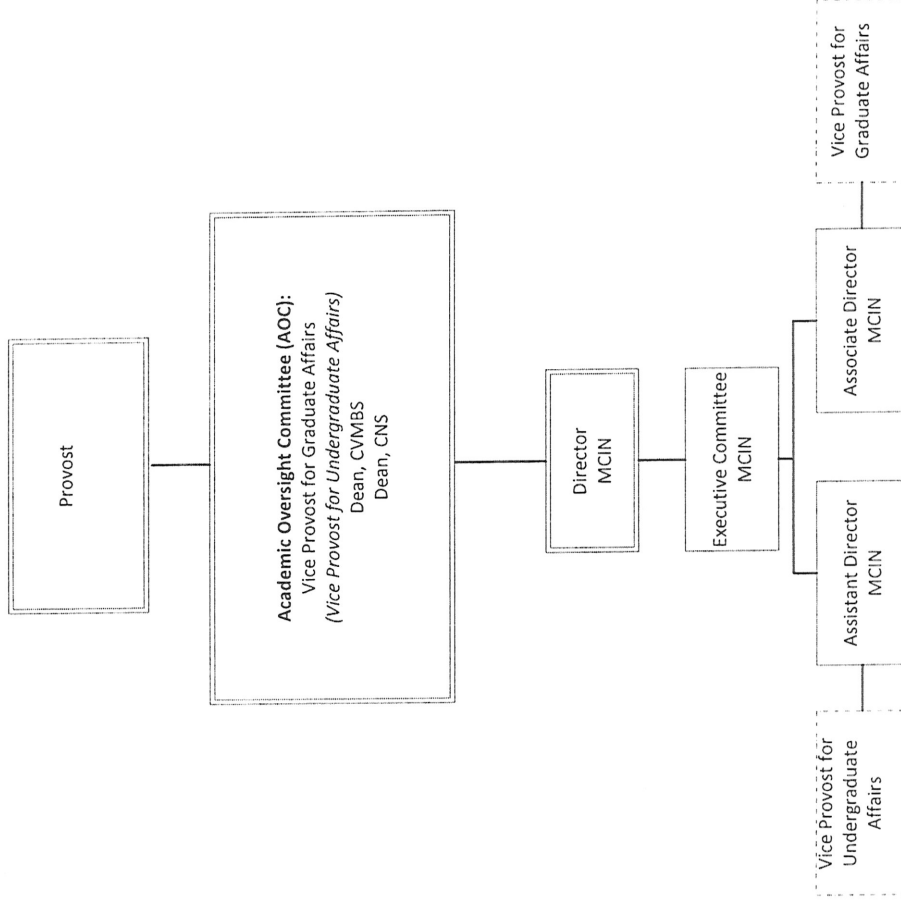
Professor, Biomedical Sciences

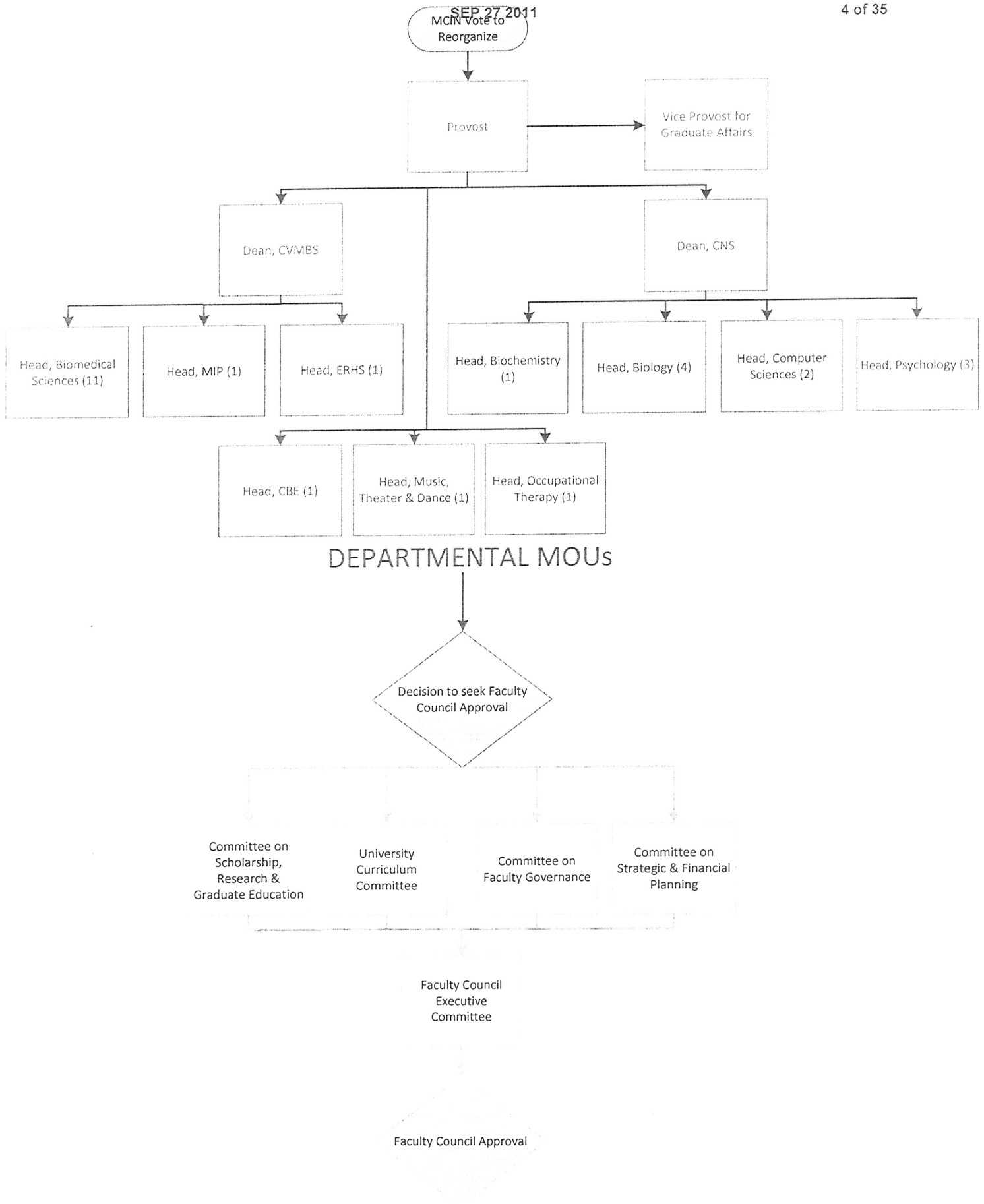
Director, Research Integrity & Compliance Review Office

OLD MCIN ORGANIZATION



"SAU" MCIN ORGANIZATION (present and future)





55
SEP 27 2011



Office of the
Provost and Executive Vice President

108 Administration
1001 Campus Delivery
Fort Collins, Colorado 80523-1001
(970) 491-6614
www.colostate.edu

August 22, 2011

Dr. Kathy Partin, Director
Colorado State University
Molecular, Cellular & Integrative Neurosciences Program
1675 Campus Delivery

Dear Dr. Partin,

On June 27th we met to discuss the possible reorganization of the MCIN program as a "Special Academic Unit" (SAU), which is a newly-defined academic structure outlined in the Faculty and Administrative Professional *Manual*. My understanding from our discussion is that MCIN will seek this reorganization as a mechanism to better support its current graduate education program, which involves courses taught by faculty in multiple departments and colleges, as well as to allow for the possibility that MCIN could offer an undergraduate degree program in the future. This reorganization will also enhance the development of future graduate degree programs, should that become desirable.


I would fully expect that such a reorganization (or SAU designation) would preserve the major elements of the MCIN program as it currently exists, including:

1. The structure of the program would remain essentially unchanged, with its governance directed by the Director, Associate Director, Executive Committee, and standing committees. Program oversight would be provided by an Academic Oversight Committee composed of the Vice Provost for Graduate Affairs and the Deans of CVMBS and CNS, as specified in the *Manual*.
2. The initial budget for MCIN would remain essentially unchanged. It is anticipated that the central administration and both colleges would continue to provide the same level of financial support for the program as they have in past years.
3. Reorganization will be dependent upon successful execution of memoranda of understanding (MOUs) with the Deans of CVMBS and CNS, the appropriate Chairs of the departments that are home to MCIN faculty, and the MCIN faculty members. These MOUs shall codify existing practices with regard to teaching and service efforts, and shall not represent a significant expansion of the effort of faculty members in the MCIN program. We have both reviewed examples of such MOUs which seem appropriate. The model of the one used for the School of Biomedical Engineering seems to work well.

I understand that you will be meeting in future weeks with the appropriate University parties whose consultation and/or approval will be necessary for the establishment of the SAU, including the Vice Provost for Graduate Affairs, the Deans of CVMBS and CNS, the Chairs of the involved departments, and the relevant Faculty Council committees (Scholarship, Research & Graduate Education; Curriculum; Strategic & Financial Planning; Faculty Governance; and, Executive Committee) prior to seeking

approval of the Faculty Council, as required by the *Manual*. You may let these parties know that I fully support the designation/reorganization of MCIN as a SAU, as stipulated above.

Sincerely,



Rick Miranda
Provost and Executive Vice President

xc: Dr. Bill Farland
Dr. Tom Gorell
Dr. Tim Gallagher
Dr. Jodie Hanzlik
Dr. Jan Nerger
Dr. Lance Perryman

|

January 4, 2012

TO: Tim Gallagher
Executive Committee and Faculty Council

FROM: Howard Ramsdell, Chair
University Curriculum Committee

SUBJECT: Request to Add Master of Science— Plan B

The University Curriculum Committee moves Faculty Council adopt the following:

Add a Plan B to the Master of Science in Design and Merchandising , Apparel and Merchandising specialization, Distance Education option, effective Spring Semester 2012.

The proposal was reviewed and approved by the Committee on Scholarship, Research, and Graduate Education on November 3, 2011 and by the University Curriculum Committee on November 18, 2011.

Rationale:

According to the request submitted by the department:

“The department proposes a Plan B in the Master of Science degree to meet the career goals of those students interested in applied careers in Apparel & Merchandising in which research is not a part of the job description. The proposed Plan B involves all students in research-related activities in support of the department’s focus to apply creative, interdisciplinary research to solve social problems. Plan A is still targeted to those student planning to pursue a Ph.D. seeking a research career in the academy”

Enclosures

58
SEP 16 2011

185

NEW/MAJOR/MINOR PROGRAMS OF STUDY-CURRICULAR REQUESTS

CONTACT PLEASE PRINT: NAME Jennifer Ogle EMAIL jennifer.ogle@colostate.edu PHONE 970-491-3794
(REQUIRED)CHECK THE APPROPRIATE BOX ON THE FAR LEFT. See Curricular Policies and Procedures Handbook, available at <http://www.colostate.edu/orgs/ucc> for instructions.

ADDS

- ☐ ADD a new department and/or college. (Complete Section I-Column B and Section II.)
- ☒ ADD a new degree or major or concentration or option or minor or interdisciplinary studies program. (Complete Section I-Column B, Section II, and Section III-Column B.)

MAJOR CHANGES

- ☐ CHANGE the name of an existing department and/or college. (Complete Section I-Column A, only changed item(s) in Section I-Column B, and Section II.)
- ☐ CHANGE the name of a degree or major or concentration or option or minor or interdisciplinary studies program. (Complete Section I-Column A, only changed item(s) in Section I-Column B, and Section II.)
- ☐ CHANGE the curriculum requirements of an approved major or concentration or option or minor or interdisciplinary studies program involving a sum total of 7 or more credits. (Complete Section I-Column A, Section II, Section III-Column A, and only changed item(s) in Section III-Column B.)
- ☐ CHANGE AUCC Category 4 requirements of an approved major or concentration. (Complete Section I-Column A, Section II, Section III-Column A, and only changed item(s) in Section III-Column B.)
- ☐ DROP a degree or major or concentration or option or minor or interdisciplinary studies program and requirements. (Complete Section I-Column A and Section II.)

MINOR CHANGES

- ☐ CHANGE the curriculum requirements of an approved major or concentration or option or minor or interdisciplinary studies program involving a sum total of less than 7 credits. (Complete Section I-Column A, Section II, Section III-Column A, and only changed item(s) in Section III-Column B.)
- ☐ CHANGE courses and/or group requirements from freshman/sophomore year to junior/senior year or vice versa in an approved major or concentration or option or minor or interdisciplinary studies program. (Complete Section I-Column A, Section II, Section III-Column A, and only changed item(s) in Section III-Column B.)

SECTION I

| A. PRESENT NAME | COLLEGE | B. REQUESTED NAME |
|---------------------------------|---|--------------------|
| Applied Human Sciences | | |
| Design and Merchandising | DEPARTMENT | |
| MS Design and Merchandising | MAJOR | |
| Great Plains IDEA Merchandising | UNDERGRADUATE CONCENTRATION/ GRADUATE SPECIALIZATION | |
| Apparel and Merchandising | | |
| Distance Education | OPTION | Distance Education |
| | MINOR | |
| | INTERDISCIPLINARY STUDIES PROGRAM | |
| M.S. | DEGREE | M.S. Plan B |

EFFECTIVE DATE (TERM AND YEAR) REQUESTED Spring 2012

SECTION II-JUSTIFICATION FOR REQUEST

The department proposes a Plan B in the Master of Science degree to meet the career goals of those students interested in applied careers in Apparel & Merchandising in which research is not a part of the job description. The proposed Plan B involves all students in research-related activities in support of the department's focus to apply creative, interdisciplinary research to solve social problems. Plan A is still targeted to those students planning to pursue a Ph.D., seeking a research career in the academy.

SECTION III (SEE PG. 2)

SECTION IV-SIGNATURES OF AFFECTED DEPARTMENTS (SEE PG. 3)

CHANNELS FOR APPROVAL

| | DATE |
|---|-------------------------------|
| Department Head/Chairperson* | <u>Nancy Miller</u> 9/9/11 |
| Chairperson, College Curriculum Committee | <u>Carolee Hakala</u> 9/14/11 |
| Dean of College* | <u>John Miller</u> 9/16/11 |

*Signature indicates approval and a commitment of resources.

| CURRICULUM & CATALOG USE | Approval Date |
|---|---------------|
| Comm. On Scholarship, Research, and Graduate Education (CoSRGE) | 11/3/11 |
| University Curriculum Committee | |
| Faculty Council | |
| Approved Effective Date | |

Call 1-1451, Curriculum and Catalog Administration, for information.

59

245

SECTION III-LISTING OF CURRICULUM REQUIREMENTS

A. For EXISTING PROGRAMS ONLY, contact Curriculum and Catalog to request a current program of study, which will be pasted below in this column for you.
Curriculum and Catalog: 1-1451 or 1-1578.

B. For NEW PROGRAMS, put the ENTIRE NEW PROGRAM below in this column.

For changes to EXISTING PROGRAMS, LIST ONLY PROPOSED CHANGES (CHANGES, DROPS, AND ADDS). (For examples, see Appendices in the *Curricular Policies and Procedures Handbook*.)

INCLUDE: Course subject code, number, title, number of credits, and AUCC designation (if appropriate). Note superscript "P" after course number if course has a prerequisite.

College of Applied Human Sciences
Department of Design and Merchandising
Master of Science in Design and Merchandising Effective Spring 2006
Apparel and Merchandising Specialization CoSRGE 10/13/05 *Plan A*

| Distance Education- Merchandising Option UCC 11/14/05 Course# | Title (Prerequisite) | Cr |
|---|--|----|
| DM 510 | Consumer Behavior | 3 |
| DM 520 | Professional Advancement in Merchandising | 3 |
| DM 530 | Product Design Development and Evaluation | 3 |
| DM 540 | Promotional Strategies in Merchandising | 3 |
| DM 550 | Retail Theory and Practices | 3 |
| DM 610 | Historical and Contemporary Issues in Trade | 3 |
| DM 620 | International Merchandise Management | 3 |
| DM 630 | Merchandising Research Methods (graduate-level statistics course and completion of DM 500-level courses) | 3 |
| DM 640 | Merchandising Finance | 3 |
| DM 650 | Strategic Decisions in Merchandising | 3 |
| DM 699 | Thesis | 6 |

PROGRAM TOTAL = 36 credits

New Plan B *Design and Merchandising*
Master of Science in Merchandising
Apparel and Merchandising specialization
Distance Education Option

| | CREDITS |
|--|---------|
| Consumer Behavior (DM 510) | 3 |
| Professional Advancement in Merchandising (DM 520) | 3 |
| Product Design, Development, and Evaluation (DM 530) | 3 |
| Promotional Strategies in Merchandising (DM 540) | 3 |
| Retail Theory and Practice (DM 550) | 3 |
| Historical and Contemporary Issues in Trade (DM 610) | 3 |
| International Merchandising Management (DM 620) | 3 |
| Merchandising Research Methods (DM 630) | 3 |
| Merchandising Finance (DM 640) | 3 |
| Strategic Decisions in Merchandising (DM 650) | 3 |
| Research (DM 698) | 3 |
| Elective ¹ | 3 |

PROGRAM TOTAL = 36

with approval of advisor and graduate committee

60

345

SECTION IV – SIGNATURES OF AFFECTED DEPARTMENTS
(Required before consideration by University Curriculum Committee)

Affected departments include any department outside the home department, whose course is used in the program. Affected departments might also include other departments offering a program with similar or overlapping content.

This proposal for a curricular change or addition of a program of study has been reviewed and agreed to by the following departments affected by the changes.

| | | | | | |
|-----------|--------------------|------------|----------------------|------|---------|
| Signature | Nicole [Signature] | Department | Continuing Education | Date | 9/12/11 |
| Signature | | Department | | Date | |
| Signature | | Department | | Date | |
| Signature | | Department | | Date | |

Department of Design and Merchandising

150 Aylesworth Hall SE
1574 Campus Delivery
Fort Collins, Colorado 80523-1574
(970) 491-1629
FAX: (970) 491-4855
<http://www.dm.caahs.colostate.edu>

The department proposes a Plan B in the Master of Science degree for the Great Plains IDEA program to meet the career goals of those students interested in applied careers in Apparel and Merchandising in which independent research is not a part of the job description. Examples of job titles in applied careers include Merchandise Coordinator, Merchandise Planner, Product Manager, or Brand Manager. Plan A is still targeted to those students planning to pursue a Ph.D., and seeking an independent research career in the academe.

The proposed Plan B allows students to complete course in various topics in the Apparel and Merchandising industry. A Plan B report for 3 credits and an elective for 3 credits will complete the 36 credits requirement for the Plan B Master of Science Degree.

Characteristics of the Plan B Report:

1. The student will enroll in 3 credits in DM 698 under the supervision/direction of a faculty advisor.
2. The student will have a committee composed of 3 members: the faculty advisor in DM 698, another DM graduate faculty member, and an outside member who is a member of the university graduate faculty. This committee will be responsible for successful completion and defense of the Plan B report.
3. Possibilities for a Plan B Report include:
 - Teaching Portfolio (including appropriate written documentation)
 - Literature Review (including implications for research and/or practice)
 - Case Study
 - Capstone-Style Project
 - Professional Paper (approximately 20 pages in which the student analyzes a real life problem and provides research-based recommendations)
 - Introduction
 - Literature Review
 - Recommendations
 - Prospectus for A Textbook or A Curriculum/New Course
4. The plan is consistent with those used throughout the College of Applied Human Sciences, involves student in research-related activities, and meets all graduate school requirements.

62

585

College of Applied Human Sciences
 Department of Design and Merchandising
 Master of Science in Design and Merchandising
 Apparel and Merchandising Specialization
 Distance Education-Merchandising Option, Plan B

Effective Spring 2012

(The entire program is shown.)

| <u>Course</u> | <u>Title</u> | <u>Cr</u> |
|-----------------------------------|---|-----------|
| DM 510 | Consumer Behavior | |
| DM 520 | Professional Advancement in Merchandising | |
| DM 530 | Product Design Development and Evaluation | |
| DM 540 | Promotional Strategies in Merchandising | |
| DM 550 | Retail Theory and Practices | |
| DM 610 | Historical and Contemporary Issues in Trade | |
| DM 620 | International Merchandise Management | |
| DM 630 ^P | Merchandising Research Methods | |
| DM 640 | Merchandising Finance | |
| DM 650 | Strategic Decisions in Merchandising | |
| DM 698 | Research Elective | |
| <u>PROGRAM TOTAL = 36 credits</u> | | |

^P This course has at least one prerequisite. Check the Courses of Instruction section of the catalog or <http://catalog.colostate.edu/> to see the course prerequisites.

Select elective course(s) with approval of advisor and graduate committee.

January 4, 2012

TO: Tim Gallagher, Chair
Executive Committee and Faculty Council

FROM: Howard Ramsdell, Chair
University Curriculum Committee

SUBJECT: Request for New Master of Tourism Management—Plan C

The University Curriculum Committee moves Faculty Council adopt the following:

A plan C master's program, Master of Tourism Management (M.T.M.) be established in the Warner College of Natural Resources, effective Fall Semester 2012.

The proposal was reviewed and approved by the following committees: Committee on Scholarship, Research, and Graduate Education on November 3, 2011; University Curriculum Committee on November 18, 2011.

Rationale:

According to the program proposal:

“...This program will prepare students for career entry or mid-level management positions in public, commercial, or nonprofit organizations providing visitor/tourism, including graduate courses in a) the concepts that guide decision-making for tourism practitioners and the interdependence of the diverse sectors of the tourism industry; b) the economic, social, and environmental impacts of tourism on society and the impact of uses of land and natural resources on tourism; c) the foundations of sustainable tourism development; and d) the identification and understanding of international policies, trends and challenges facing the tourism industry and organizations. ... ”

Enclosures

xc Alan Bright

64
OCT 20 2011

10F5

NEW/MAJOR/MINOR PROGRAMS OF STUDY-CURRICULAR REQUESTS

CONTACT PLEASE PRINT: NAME Alan Bright EMAIL Alan.Bright@Colostate.edu PHONE 970-491-5487
(REQUIRED)CHECK THE APPROPRIATE BOX ON THE FAR LEFT. See Curricular Policies and Procedures Handbook, available at <http://www.colostate.edu/orgs/ucc> for instructions.

ADDS

☒ ADD a new department and/or college. (Complete Section I-Column B and Section II.)
☐ ADD a new degree or major or concentration or option or minor or interdisciplinary studies program. (Complete Section I-Column B, Section II, and Section III-Column B.)

MAJOR CHANGES

☐ CHANGE the name of an existing department and/or college. (Complete Section I-Column A, only changed item(s) in Section I-Column B, and Section II.)
☐ CHANGE the name of a degree or major or concentration or option or minor or interdisciplinary studies program. (Complete Section I-Column A, only changed item(s) in Section I-Column B, and Section II.)
☐ CHANGE the curriculum requirements of an approved major or concentration or option or minor or interdisciplinary studies program involving a sum total of 7 or more credits. (Complete Section I-Column A, Section II, Section III-Column A, and only changed item(s) in Section III-Column B.)
☐ CHANGE AUCC Category 4 requirements of an approved major or concentration. (Complete Section I-Column A, Section II, Section III-Column A, and only changed item(s) in Section III-Column B.)
☐ DROP a degree or major or concentration or option or minor or interdisciplinary studies program and requirements. (Complete Section I-Column A and Section II.)

MINOR CHANGES

☐ CHANGE the curriculum requirements of an approved major or concentration or option or minor or interdisciplinary studies program involving a sum total of less than 7 credits. (Complete Section I-Column A, Section II, Section III-Column A, and only changed item(s) in Section III-Column B.)
☐ CHANGE courses and/or group requirements from freshman/sophomore year to junior/senior year or vice versa in an approved major or concentration or option or minor or interdisciplinary studies program. (Complete Section I-Column A, Section II, Section III-Column A, and only changed item(s) in Section III-Column B.)

SECTION I

| A. PRESENT NAME | B. REQUESTED NAME |
|---------------------------------------|---|
| Warner College of Natural Resources | COLLEGE |
| Human Dimensions of Natural Resources | DEPARTMENT |
| | MAJOR |
| | UNDERGRADUATE CONCENTRATION/ GRADUATE SPECIALIZATION |
| | OPTION |
| | MINOR |
| | INTERDISCIPLINARY STUDIES PROGRAM |
| | DEGREE |
| | Master of Tourism Management, Plan C |

EFFECTIVE DATE (TERM AND YEAR) REQUESTED Fall 2012

SECTION II-JUSTIFICATION FOR REQUEST

The proposed Plan C Masters in Tourism Management is designed to respond to a growing need for graduate level, business-based education in the area of the management of tourism organizations and enterprises, with a particular focus on nature based tourism that is predominant throughout the West, particularly Colorado. The Masters in Tourism Management is designed as a 2-semester, on-campus degree, of which tourism based coursework (9 courses, 20 credits) will have a significant on-line component paired with on-campus components. An additional 10 credits of graduate level coursework from the CSU College of Business is taken from an extensive pick list of both on-campus and distance business courses. The primary target market will be residents of the Front Range of Colorado with Bachelor of Science or Arts Degrees wishing to expand their knowledge and expertise in areas related to the management and administration of nature-based tourism businesses and organizations.

SECTION III (SEE PG. 2)

SECTION IV-SIGNATURES OF AFFECTED DEPARTMENTS (SEE PG. 3)

CHANNELS FOR APPROVAL

Department Head/
Chairperson*
Chairperson, College
Curriculum Committee
Dean of
College*

DATE

9/15/11
9/15/11
9/21/11

*Signature indicates approval and a commitment of resources.

CURRICULUM & CATALOG USE

Approval Date

Comm. On Scholarship, Research, and
Graduate Education (CoSRGE)

M. S. B. 11-3-11

University Curriculum Committee

11/18/11

Faculty Council

Approved Effective Date

Call 1-1451, Curriculum and Catalog Administration, for information.

65

2045

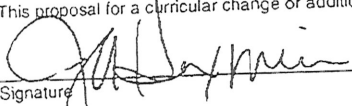
SECTION III-LISTING OF CURRICULUM REQUIREMENTS

| Course | Title | Credits |
|--|--|---------|
| FALL SEMESTER | | |
| <u>First 8-Week Session</u> | | |
| NRRT600 | The Tourism Industry: Concepts and Practices | 2 |
| NRRT615 | Foundations of Sustainable Tourism Development | 2 |
| <u>Second 8-Week Session</u> | | |
| NRRT610 | Natural Resource Management and Tourism | 2 |
| NRRT655 | Tourism Marketing Concepts and Applications | 2 |
| <u>8- or 16-Weeks</u> | | |
| Various | College of Business Coursework from Pick List | 4-6 |
| NRRT679 ¹ | Integrated Capstone | 2 |
| SPRING SEMESTER | | |
| <u>First 8-Week Session</u> | | |
| NRRT625 | Communication and Conflict Management in Tourism Organizations | 2 |
| NRRT601 | Quantitative Analysis in Tourism Decision-Making | 2 |
| <u>Second 8-Week Session</u> | | |
| NRRT662 | Global Tourism Policy | 2 |
| NRRT671 | Tourism Entrepreneurship and Management | 2 |
| <u>8- or 16-Weeks</u> | | |
| Various | College of Business Coursework from Pick List | 4-6 |
| NRRT679 ¹ | Integrated Capstone | 2 |
| ¹ Each semester, students will sign up for 2 credits of Integrated Capstone work (NRRT679). Satisfaction of these credits will be earned through on-campus work and personal interaction among other students in the class and the instructor. During these on-campus periods, students will participate, with fellow students and course professors, in cohort discussion and application of concepts. | | |

SECTION IV - SIGNATURES OF AFFECTED DEPARTMENTS
(Required before consideration by University Curriculum Committee)

Affected departments include any department outside the home department, whose course is used in the program. Affected departments might also include other departments offering a program with similar or overlapping content.

This proposal for a curricular change or addition of a program of study has been reviewed and agreed to by the following departments affected by the changes.

| | | |
|---|---------------------------|------------|
| Signature  | Associate Dean - Business | 9/15/11 |
| Signature _____ | Department _____ | Date _____ |
| Signature _____ | Department _____ | Date _____ |
| Signature _____ | Department _____ | Date _____ |
| Signature _____ | Department _____ | Date _____ |

666

3 of 5

SECTION III - LISTING OF CURRICULUM REQUIREMENTS

| Course | Title | Credits |
|------------------------------|--|---------|
| FALL SEMESTER | | |
| <u>First 8-Week Session</u> | | |
| NRRT600 | The Tourism Industry: Concepts and Practices | 2 |
| NRRT615 | Foundations of Sustainable Tourism Development | 2 |
| <u>Second 8-Week Session</u> | | |
| NRRT610 | Natural Resource Management and Tourism | 2 |
| NRRT655 | Tourism Marketing Concepts and Applications | 2 |
| <u>8- or 16-Weeks</u> | | |
| Various | College of Business Coursework from Pick List | 4-6 |
| NRRT679 ¹ | Integrated Capstone | 2 |
| SPRING SEMESTER | | |
| <u>First 8-Week Session</u> | | |
| NRRT625 | Communication and Conflict Management in Tourism Organizations | 2 |
| NRRT601 | Quantitative Analysis in Tourism Decision-Making | 2 |
| <u>Second 8-Week Session</u> | | |
| NRRT662 | Global Tourism Policy | 2 |
| NRRT671 | Tourism Entrepreneurship and Management | 2 |
| <u>8- or 16-Weeks</u> | | |
| Various | College of Business Coursework from Pick List | 4-6 |
| NRRT679 ¹ | Integrated Capstone | 2 |

¹ Each semester, students will sign up for 2 credits of Integrated Capstone work (NRRT679). Satisfaction of these credits will be earned through on-campus work and personal interaction among other students in the class and the instructor. During these on-campus periods, students will participate, with fellow students and course professors, in cohort discussion and application of concepts.

SECTION IV - SIGNATURES OF AFFECTED DEPARTMENTS
(Required before consideration by University Curriculum Committee)

Affected departments include any department outside the home department, whose course is used in the program. Affected departments might also include other departments offering a program with similar or overlapping content.

This proposal for a curricular change or addition of a program of study has been reviewed and agreed to by the following departments affected by the changes.

| | | |
|-------------------------------|---|----------------------|
| Signature: <u>[Signature]</u> | Department: <u>Associate Dean - Business</u> | Date: <u>9/15/11</u> |
| Signature: <u>[Signature]</u> | Department: <u>Food Science & Human Nutrition</u> | Date: <u>9/16/11</u> |
| Signature: _____ | Department: _____ | Date: _____ |
| Signature: _____ | Department: _____ | Date: _____ |

67

4/10/10

SECTION III-LISTING OF CURRICULUM REQUIREMENTS

A. For EXISTING PROGRAMS ONLY, contact Curriculum and Catalog to request a current program of study, which will be pasted below in this column for you.
Curriculum and Catalog: 1-1451 or 1-1578.

B. For NEW PROGRAMS, put the ENTIRE NEW PROGRAM below in this column.
For changes to EXISTING PROGRAMS, LIST ONLY PROPOSED CHANGES (CHANGES, DROPS, AND ADDS). (For examples, see Appendices in the Curricular Policies and Procedures Handbook.)
INCLUDE: Course subject code, number, title, number of credits, and AUCC designation (if appropriate). Note superscript "P" after course number if course has a prerequisite.

Course Title Credits

FALL

First 8-Weeks

NRRT600¹ The Tourism Industry Concepts and Practices 2

NRRT615¹ Foundations of Sustainable Tourism Development 2

Second 8-Weeks

NRRT610¹ Natural Resource Management and Tourism 2

NRRT655¹ Tourism Marketing Concepts and Applications 2

NRRT662¹ Global Tourism Policy 2

8- or 16-Weeks

Courses selected from College of Business Department List (see below) 1-6

NRRT679² Integrated Capstone Course: Topics in Nature-based Tourism 1

SPRING

First 8-Weeks

NRRT625¹ Communication & Conflict Management in Tourism Organizations 2

NRRT601¹ Quantitative Analysis in Tourism Decision-Making 2

Second 8-Weeks

NRRT602¹ Quantitative Analysis in Tourism Decision-Making 2

NRRT671¹ Tourism Entrepreneurship and Management 2

8- or 16-Weeks

Courses selected from College of Business Department List (see below) 1-6

NRRT679² Integrated Capstone Course: Topics in Nature-based Tourism 1

Total Required Credits 30

Departmental list of COB Courses: Student select 10 credits from this list (list is not exhaustive of the courses students may select from; prerequisites must be adhered to)

BUS505 - Legal and Ethical Environment of Business (1 semester, 3 cr.)³

BUS601 - Business Ethics, Information Systems, and Management of information, decision tools, and concepts: quality control. (8 weeks; 2 cr.)³

BUS615 - Accounting: Financial, managerial accounting information systems. Use of accounting information for purposes of management decision making, planning, and control. (16 weeks, 4 cr.)³

BUS620 - Leadership, Ethics, and Motivation: Ethical leadership and team dynamics: basic models of negotiation utilized by leaders. (8 weeks, 2 cr.)³

BUS621 - Decision Making. Key decision concepts, processes, and tools that help managers formulate and implement competitive strategy. (8 weeks, 2 cr.)³

BUS635 - Business Economics for the World Market. Applications of economic principles to current problems in context of the global market place. (8 weeks; 2 cr.)³

BUS655 - Marketing Management. Examines processes of customer value creation (e.g., product development, communications, and distribution) and value capture (e.g., pricing) (8 weeks 2 cr.)³

BUS656 - Marketing Strategy and Planning. Basic marketing strategy analysis, formulation, evaluation and implementation concepts and tools. (8 weeks; 2 cr.)³

BUS660 - Ethical, Legal, and Regulatory Issues. Legal, regulatory, societal and ethical issues encountered by business professionals (8 weeks, 2 cr.)³

BUS665 - Strategic Management: Integrates skills and concepts through analysis and discussion of cases and articles based on actual business problems. (16 weeks, 4 cr.)³

ACT600 - Accounting for Managers. Develop understanding of accounting as a source of information regarding cost management, budgeting, profitability analysis and decision making. (1 semester, 3 cr.)⁴

MGT610 - Strategic Human Resource Management. Strategic issues associated with recruiting, staffing, evaluating, compensating, developing, and leading employees. (1 semester, 3 cr.)⁴

MGT620 - Management. An understanding of human behavior at work, including individual, group, and organizational system influences. (1 semester, 3 cr.)⁴

MGT679 - Strategic Management. Studies the processes through which firms choose and implement the strategic management process. (1 semester, 3 cr.)⁴

¹These courses are being developed to be administered as on-line courses

²The Integrated Capstone Course will involve student presence on-campus and in a class setting during designated periods of each semester (1 credit per semester).

³These courses are part of the College of Business Professional MBA and Professional MBA programs offered as on-campus night classes in Fort Collins and not business schools

⁴These courses are part of the College of Business Master of Management Practice program and are offered as on-campus courses

68

5095

Warner College of Natural Resources
Department of Human Dimensions of Natural Resources
Master of Tourism Management (Plan C)

Effective Fall 2012

(The entire program is shown.)

| <u>Course</u> | <u>Title</u> | <u>Cr</u> |
|--|--|-----------|
| REQUIRED COURSES: | | |
| NRRT 600 | Tourism Industry: Concepts and Practices | 3 |
| NRRT 601 ¹ | Quantitative Analysis in Tourism I | 3 |
| NRRT 602 ¹ | Quantitative Analysis in Tourism II | 3 |
| NRRT 610 | Natural Resource Management and Tourism | 3 |
| NRRT 615 | Sustainable Tourism Development Foundations | 3 |
| NRRT 625 | Communication/Conflict Management in Tourism | 3 |
| NRRT 655 | Tourism Marketing Concepts and Applications | 3 |
| NRRT 662 | Global Tourism Policy | 3 |
| NRRT 671 | Strategic Management for Travel and Tourism | 3 |
| NRRT 679A-B | Current Topics in Nature-Based Tourism | 6 |
| | TOTAL | 27 |
| BUSINESS ELECTIVES: (a minimum of 10 credits)² | | |
| ACT 600 | Accounting for Managers | 3 |
| BUS 505 ¹ | Legal and Ethical Environment of Business | 3 |
| BUS 601 ¹ | Quantitative Business Analysis | 3 |
| BUS 615 | Accounting Systems | 3 |
| BUS 620 | Leadership and Teams | 3 |
| BUS 621 | Strategic Decision Making | 3 |
| BUS 635 | Business Economics for the World Market | 3 |
| BUS 655 | Marketing Management | 3 |
| BUS 656 | Marketing Strategy and Planning | 3 |
| BUS 660 | Ethical, Legal, and Regulatory Issues | 3 |
| BUS 665 | MBA Capstone | 3 |
| MGT 610 ¹ | Strategic Human Resource Management | 3 |
| MGT 620 | Management | 3 |
| MGT 679 ¹ | Principles of Strategic Management | 3 |
| | TOTAL | 30 |
| PROGRAM TOTAL = a minimum of 30 credits | | |

¹ This course has at least one prerequisite. Check the Courses of Instruction section of the catalog or <http://catalog.colostate.edu/ron/courses-of-instruction.aspx> to see the course prerequisites.

² Students take one credit of NRRT 679A-B each of two semesters. This course will require student presence on-campus in a classroom setting during designated periods of each semester.

³ Select a minimum of 10 credits from the list of Business Electives with approval of advisor and committee. Other business courses may be taken to satisfy the requirement with approval of advisor and committee.

November 28, 2011

TO: Tim Gallagher, Chair
Executive Committee and Faculty Council

FROM: Howard Ramsdell, Chair
University Curriculum Committee

SUBJECT: Request to Add Minimum Grade Requirement for the Ethnic Studies Major and Minor

The University Curriculum Committee moves Faculty Council adopt the following:

A minimum grade of C is required for each ETST course required for the Major and Minor in Ethnic Studies.

The minimum grade statement was reviewed and approved by the University Curriculum Committee on November 11, 2011.

Rationale:

The Department of Ethnic Studies would like to institute a minimum grade requirement of "C" for each Ethnic Studies course that is required for the Ethnic Studies Major and Minor. Because the students in the Major and Minor are required to take courses from each of the five track-based courses, it is imperative they demonstrate competence in each area. These track-based courses build toward the core courses that are designed as comparative ethnic and racial studies. Thus, the department would like to ensure that Ethnic Studies majors and minors have adequate understanding of each of the major groups' experience by implementing a minimum grade requirement for each of Ethnic Studies courses.

Memo

TO: Tim Gallagher, Chair, Faculty Council

FROM: Mary Stromberger, Chair, Committee on Scholarship, Research and Graduate Education

DATE: December 8, 2011

RE: Revisions to the *Graduate and Professional Bulletin* – H.3.8 Degree Conferral - “*ENROLLMENT AND ACADEMIC RECORDS*”

THE COMMITTEE ON SCHOLARSHIP, RESEARCH AND GRADUATE EDUCATION MOVE THAT FACULTY COUNCIL ADOPT THE REVISIONS TO THE SECTION “*ENROLLMENT AND ACADEMIC RECORDS*” – *H.3.8 Degree Conferral* - OF THE *GRADUATE AND PROFESSIONAL BULLETIN* TO BE EFFECTIVE UPON FACULTY COUNCIL ADOPTION AS FOLLOWS:

ADDITIONS - UNDERLINED - DELETIONS ~~OVERSCORED~~

H.3.8 DEGREE CONFERRAL

Degree conferral only occurs three times each year, after the conclusion of the Fall, Spring, and Summer terms. The conferral date is the date which will be posted on the official transcript and the diploma. This is the date when the degree is considered officially awarded. A degree is a credential. There are three documents that provide evidence of that credential: an official transcript, a diploma, and a formal letter of completion from the Graduate School. CSU degrees will not be posted on the student's record until the official degree conferral date has been reached for the semester in which the degree is being awarded. Completion of all requirements prior to the official degree conferral date will not result in early conferral of the degree. A student in this situation may request an official “Letter of Completion” from the Graduate School showing pending conferral of the degree. The degree will be conferred for the term in which the requirements are completed.

Rationale: To update and be in agreement with the Catalog. Faculty Council has approved (April 5, 2011) the Catalog change and the overall rationale.

Memo

TO: Tim Gallagher, Chair, Faculty Council

FROM: Mary Stromberger, Chair, Committee on Scholarship, Research and Graduate Education

DATE: January 17, 2012

RE: Revisions to the *Graduate and Professional Bulletin* – D.5 Application: International Students –
"ADMISSIONS REQUIREMENTS AND PROCEDURES"

THE COMMITTEE ON SCHOLARSHIP, RESEARCH AND GRADUATE EDUCATION MOVE THAT FACULTY COUNCIL ADOPT THE REVISIONS TO THE SECTION "ADMISSIONS REQUIREMENTS AND PROCEDURES" – *D.5 Application: International Students* - OF THE *GRADUATE AND PROFESSIONAL BULLETIN* TO BE EFFECTIVE UPON FACULTY COUNCIL ADOPTION AS FOLLOWS:

ADDITIONS - UNDERLINED - DELETIONS ~~OVERSCORED~~

ADMISSIONS REQUIREMENTS AND PROCEDURES (*Graduate and Professional Bulletin*)

D.5 APPLICATION: INTERNATIONAL STUDENTS

Application procedures are similar to those for U.S. citizens or permanent resident students. Refer to U.S. Citizens or Permanent Residents information for on-line World Wide Web instructions.

The following materials must be sent directly to the department in which the applicant plans to study (see Programs and Degrees webpage for the mailing address at <http://graduateschool.colostate.edu/prospective-students/degrees.aspx>.)

1. An official transcript of all collegiate work completed along with a certified translation into English.
2. ~~Certified proof of financial support along with the GS Form 3F.~~
3. Scores on the Test of English as a Foreign Language (TOEFL) or International English Language Testing System (IELTS). Track III Admissions are not required to take either the TOEFL or the IELTS exam.
4. A statement of purpose.
5. Three letters of recommendation.

Required items for Immigration Document Issuance. These items are not required for the application review process, but will be required if officially admitted. The following materials must be sent directly to the department in which the applicant plans to study (see Programs and Degrees webpage for the mailing address at <http://graduateschool.colostate.edu/prospective-students/degrees.aspx>.)

1. Certified proof of financial support – Graduate Student Certification for Issuance of Immigration Document (GS3F form) and supporting financial documents
2. Passport copy

Departmental requirements for additional materials such as standardized tests (e.g. GRE or GMAT) are the same as for U.S. students. Regulations regarding deadlines and application fees are likewise the same as for U.S. students. Information on application deadlines and application fees is contained in the U.S. Citizens or Permanent Residents section.

The U.S. Bureau of Citizenship and Immigration Services requires the University to have proof of financial support (~~Item 3 above~~) before immigration documentation can be issued. Immigration documentation is needed to obtain a visa. All international students and their accompanying dependents are required to maintain adequate health insurance during their stay at the University.

Only persons with degrees equivalent to U.S. bachelor's degrees are qualified to apply for admission except for Track III applicants described above. Further, it is a University regulation that international applicants should be among the top students in their classes.

Colorado State University requires that proficiency in English language be demonstrated either by the TOEFL or IELTS tests prior to admissions. The minimum TOEFL score for admission without condition is 213 (~~computer-based~~), 550 (paper-based) or 80 (internet-based). The minimum IELTS score for admission without condition is 6.5. Official scores, taken within two years prior to admission, must be submitted directly from the testing agency.

To be considered for conditional admission, a student must have a minimum TOEFL score of 475 on the paper based test or 50 on the internet based test, or minimum IELTS score of 5.5. After receiving conditional admission, the student must satisfactorily complete the University Intensive English Program. Conditional admission is possible for students with TOEFL scores between 133 and 212 (computer-based) or IELTS scores between 4.0 and 6.5 with the provision that they must achieve adequate proficiency in English (TOEFL score of 213 or IELTS of 6.5) before registering for courses or that they satisfactorily complete the University's Intensive English Program. Enrollment in regular University academic courses is at the discretion of the Intensive English Program. Approval of both the department and the Vice Provost for Graduate Affairs is necessary for such conditional admission.

RATIONALE: These changes separate the requirements for the application process from those items required for immigration document issuance. In addition, the process maintains the flow of all documents through the department for consistency and simplicity for the student.

The changes regarding TOEFL scores is an update, since computer based scores have been replaced by internet-based.

Conditional admits regarding English require satisfactory completion of the University's Intensive English Program (IEP). Specifics required for conditional admits were updated.

Date: January 17, 2012

To: Tim Gallagher, Chair
Executive Committee/Faculty Council

From: David Greene, Chair
Committee on Responsibilities and Standing of Academic Faculty

Subject: Proposed Revisions to the *Manual*, Section D.7.13 – Travel Policies

The Committee on Responsibilities and Standing of Academic Faculty moves that the Faculty Council adopt the proposed revisions to the *Manual*, Section D.7.13 – Travel Policies to be effective upon approval by the Board of Governors of the Colorado State University System as follows:

Additions underlined - Deletions ~~overseored~~

D.7.13 Travel Policies

Participation in professional ~~meetings~~ activities is recognized as ~~increasing~~ enhancing staff competence and adding to the University's stature. Travel for such purposes is authorized to the limit of funds available, insofar as these authorizations are consistent with University policies and CSU System Fiscal Rules ~~State regulations. University policy provides that State travel regulations shall apply for all travel whether performed with State, Federal, or other funds. An up-to-date copy of the travel rules, regulations, and procedures may be secured from the Department of Business and Financial Services.~~

Rationale: The University is no longer governed by State travel regulations.